

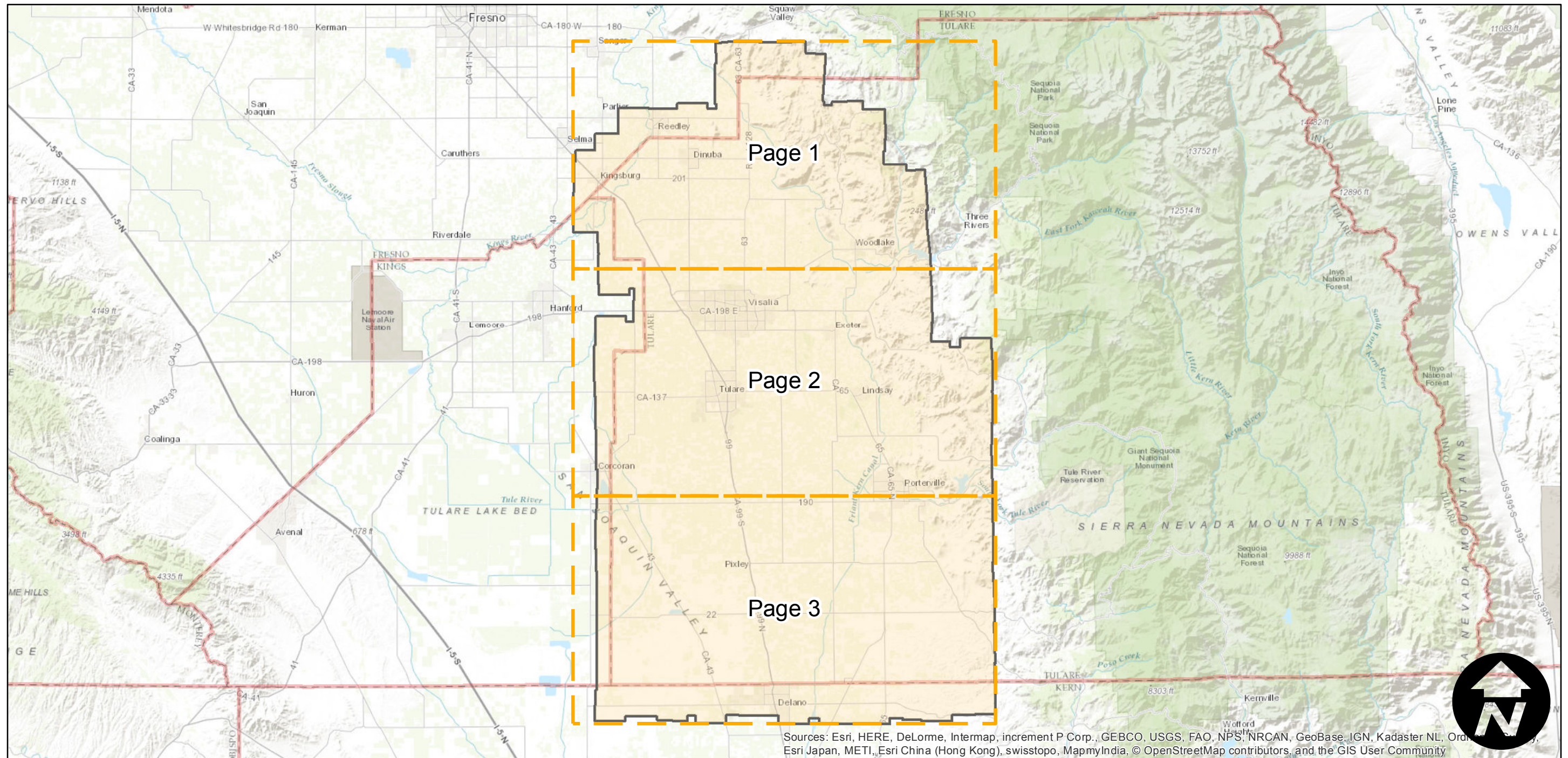
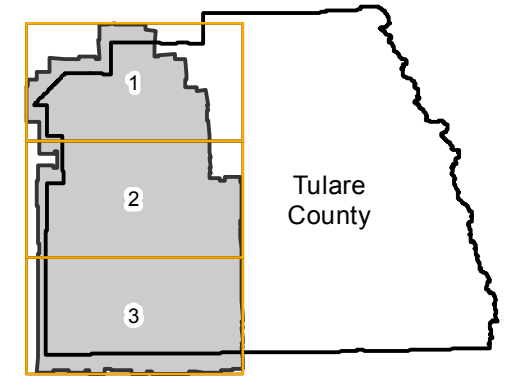
ABK-1956

Counties: Tulare, Fresno, Kings, Kern
Flight date(s): 04-19-1956 to 06-02-1956
Scale: 1:20,000
Overlap: 60%

Note: Western Tulare County from Reedley to Delano.
Areas covered include Kingsburg, Visalia, Tulare, Lindsay,
Porterville, and Pixley. Coverage extends into surrounding
counties.

Complete Metadata:
<http://www.library.ucsb.edu/map-imagery-lab/aerial-photography-information>

FLIGHT LOCATION



Sources: Esri, HERE, DeLorme, Intermap, increment P Corp., GEBCO, USGS, FAO, NPS, NRCAN, GeoBase, IGN, Kadaster NL, Ordnance Survey, Esri Japan, METI, Esri China (Hong Kong), swisstopo, MapmyIndia, © OpenStreetMap contributors, and the GIS User Community

0 10 20 40 Miles

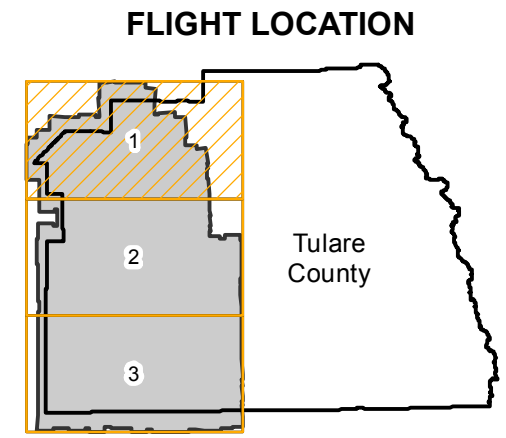
Index to Aerial Photography
Page Key

Scale of this index: 1:650,000

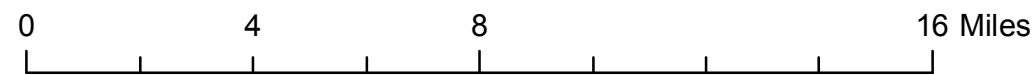
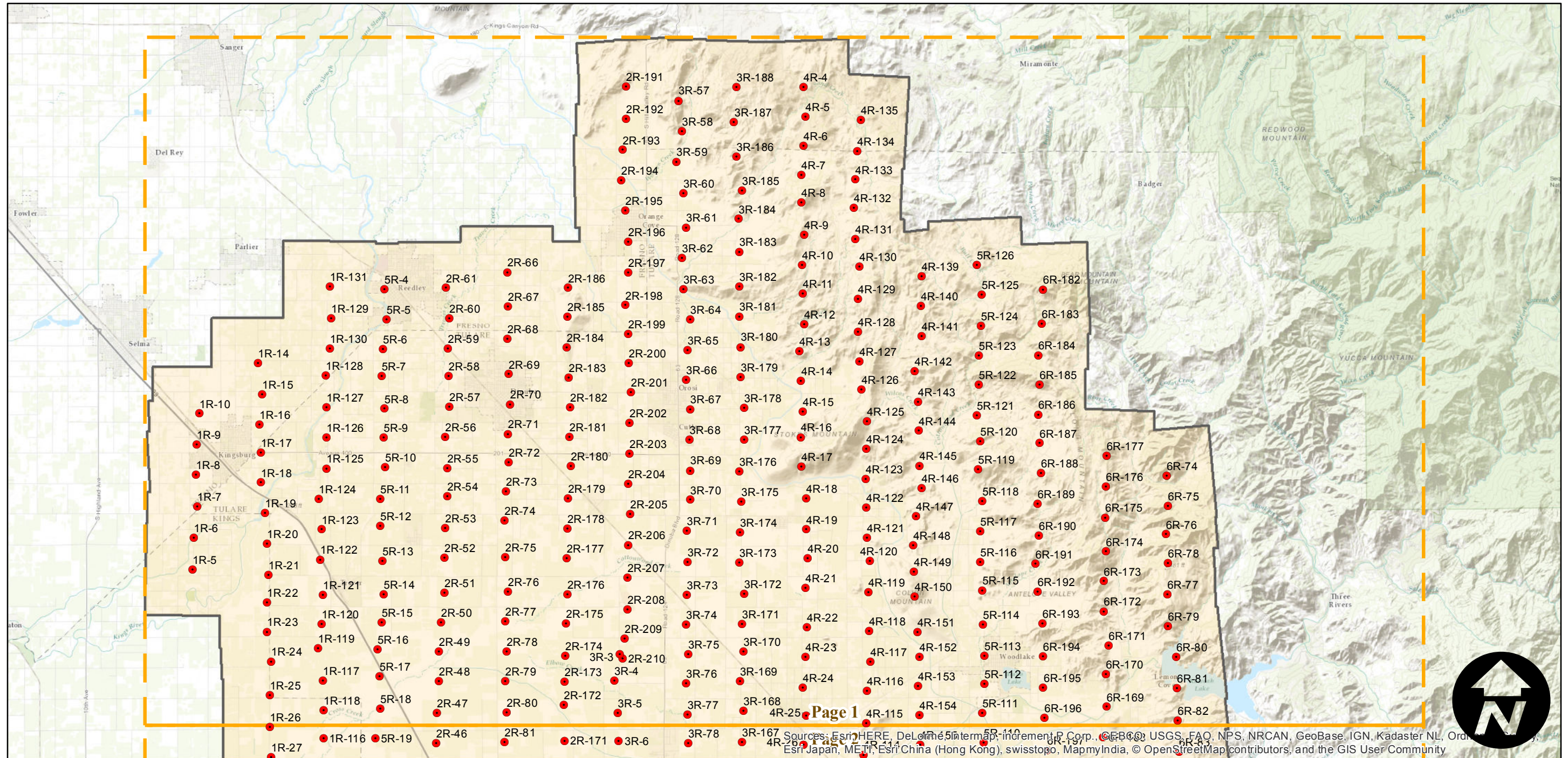
ABK-1956

Counties: Tulare, Fresno, Kings, Kern
 Flight date(s): 04-19-1956 to 06-02-1956
 Scale: 1:20,000
 Overlap: 60%

Note: Western Tulare County from Reedley to Delano.
 Areas covered include Kingsburg, Visalia, Tulare, Lindsay,
 Porterville, and Pixley. Coverage extends into surrounding
 counties.



Complete Metadata:
<http://www.library.ucsb.edu/map-imagery-lab/aerial-photography-information>

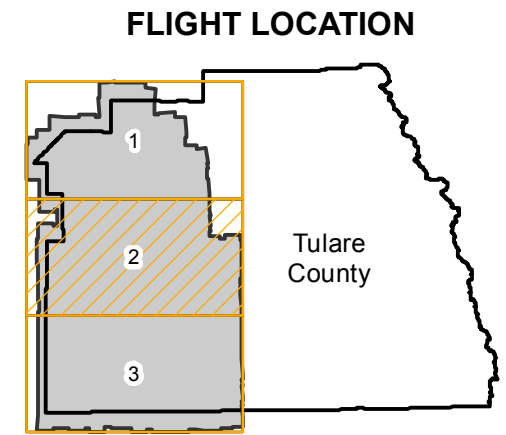


Source: Esri, HERE, DeLorme, Intermap, increment P Corp., GEBCO, USGS, FAO, NPS, NRCAN, GeoBase, IGN, Kadaster NL, Ordnance Survey, Esri Japan, METI, Esri China (Hong Kong), swisstopo, MapmyIndia, © OpenStreetMap contributors, and the GIS User Community

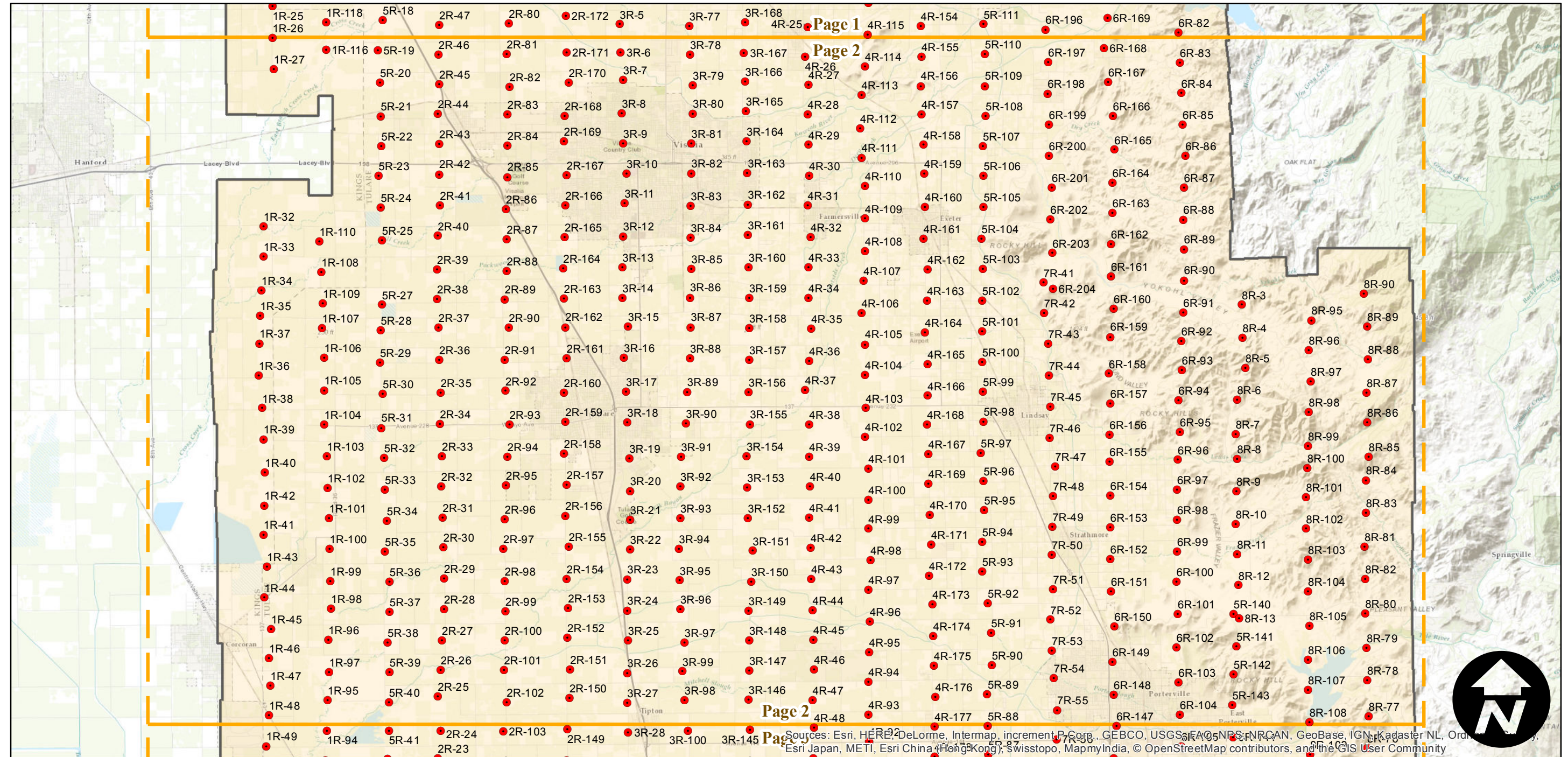
ABK-1956

Counties: Tulare, Fresno, Kings, Kern
Flight date(s): 04-19-1956 to 06-02-1956
Scale: 1:20,000
Overlap: 60%

Note: Western Tulare County from Reedley to Delano.
Areas covered include Kingsburg, Visalia, Tulare, Lindsay,
Porterville, and Pixley. Coverage extends into surrounding
counties.



Complete Metadata:
<http://www.library.ucsb.edu/map-imagery-lab/aerial-photography-information>



0 4 8 16 Miles

Index to Aerial Photography
Page 2 of 3

Scale of this index: 1:215,000

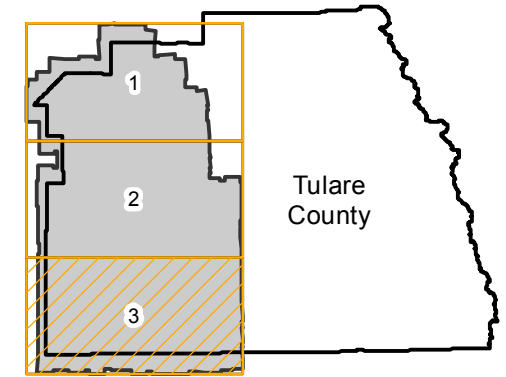
Sources: Esri, HERE, DeLorme, Intermap, increment P Corp., GEBCO, USGS, FAO, NPS, NRCAN, GeoBase, IGN, Kadaster NL, Ordnance Survey, Esri Japan, METI, Esri China (Hong Kong), Swisstopo, MapmyIndia, © OpenStreetMap contributors, and the GIS User Community

ABK-1956

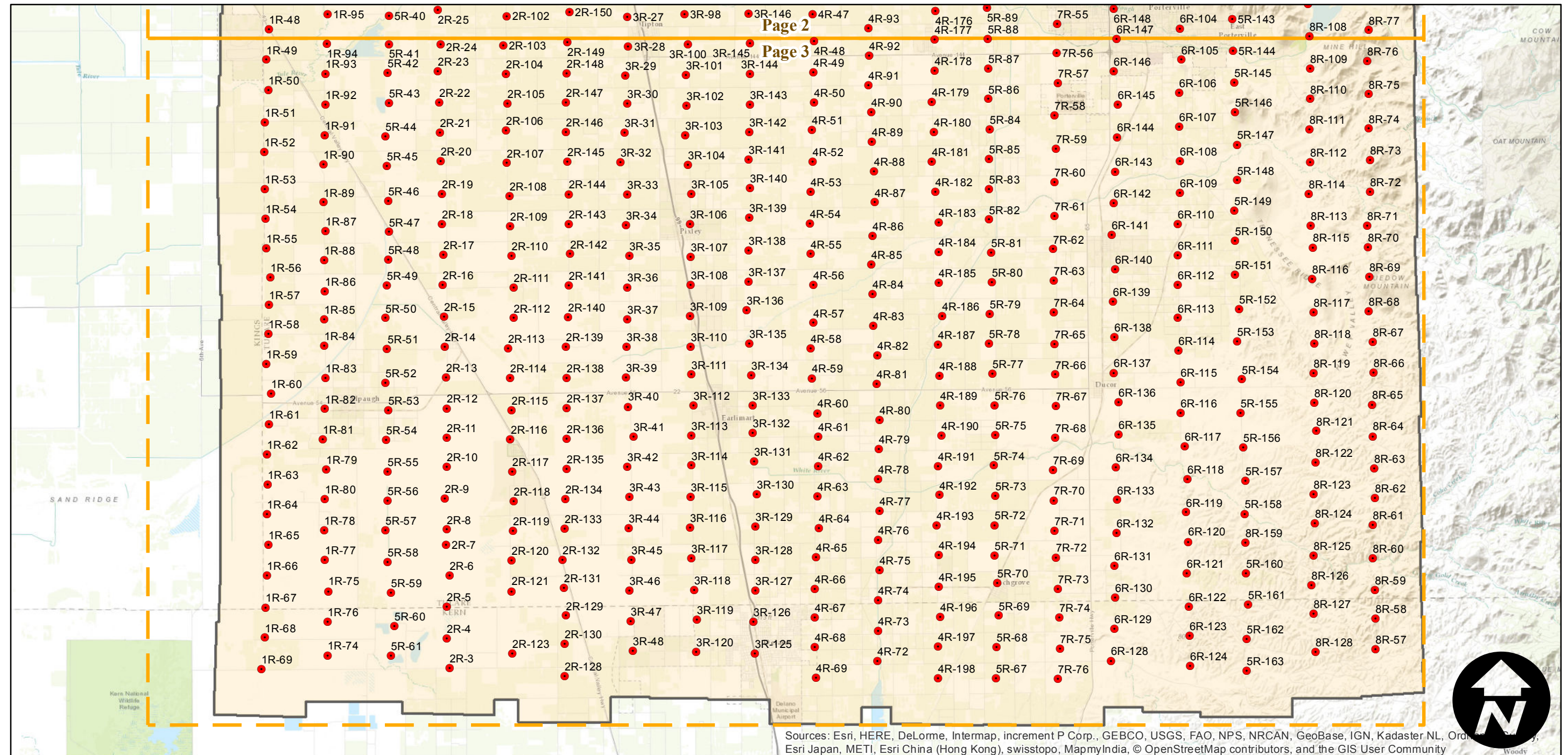
Counties: Tulare, Fresno, Kings, Kern
Flight date(s): 04-19-1956 to 06-02-1956
Scale: 1:20,000
Overlap: 60%

Note: Western Tulare County from Reedley to Delano.
Areas covered include Kingsburg, Visalia, Tulare, Lindsay,
Porterville, and Pixley. Coverage extends into surrounding
counties.

FLIGHT LOCATION



Complete Metadata:
<http://www.library.ucsb.edu/map-imagery-lab/aerial-photography-information>



Sources: Esri, HERE, DeLorme, Intermap, increment P Corp., GEBCO, USGS, FAO, NPS, NRCAN, GeoBase, IGN, Kadaster NL, Ordnance Survey, Esri Japan, METI, Esri China (Hong Kong), swisstopo, MapmyIndia, © OpenStreetMap contributors, and the GIS User Community

