

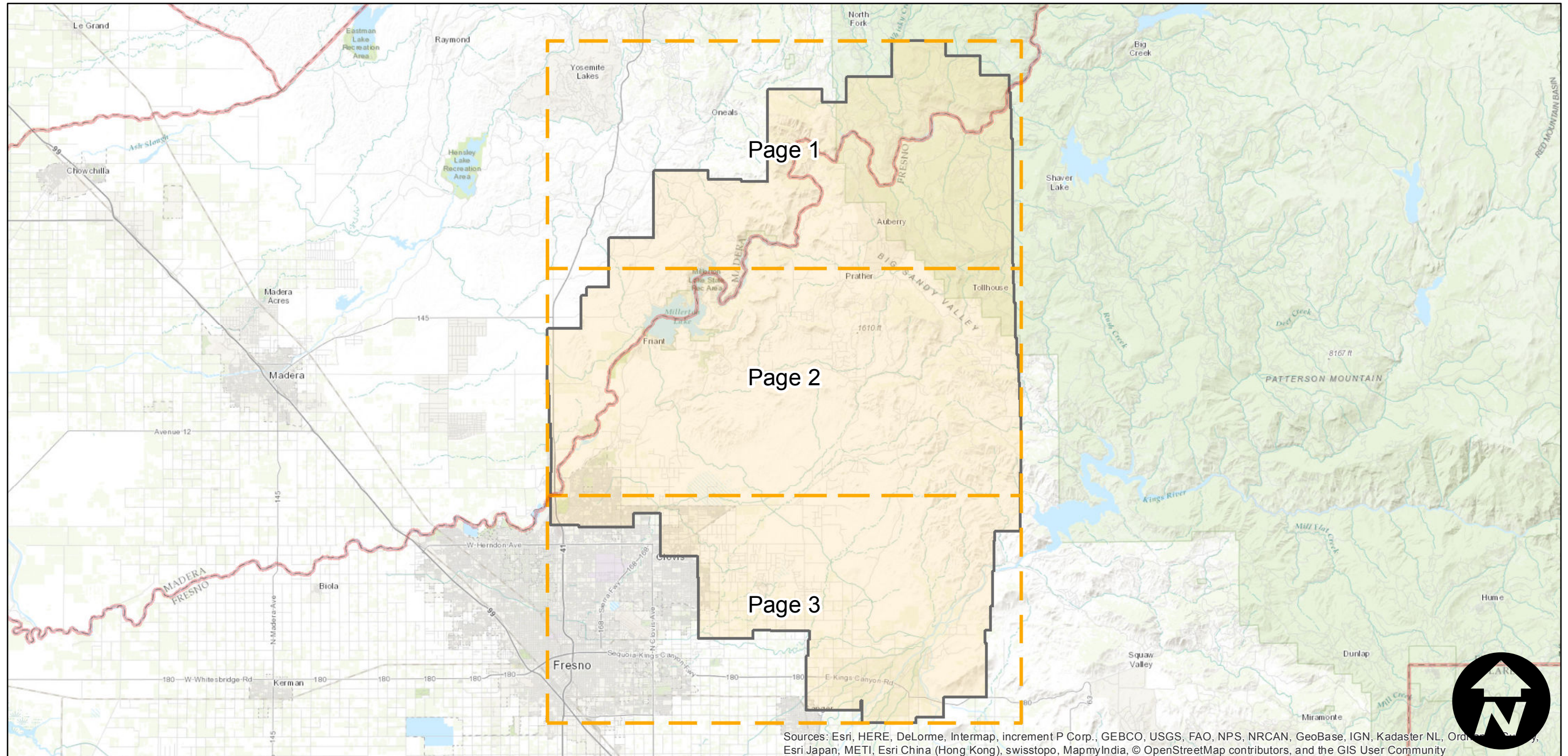
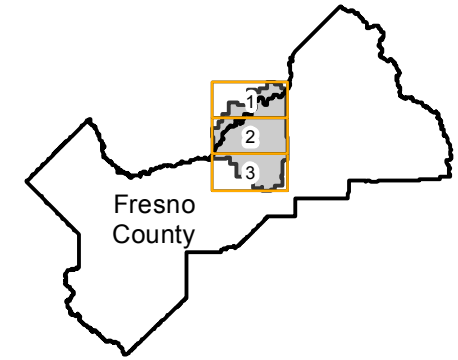
ABI-1940

Counties: Fresno, Madera
Flight date(s): 01-01-1940 to 12-31-1940
Scale: 1:20,000
Overlap: 60%

Complete Metadata:
<http://www.library.ucsb.edu/mil/aerial-photography-information>

Note: Portion of central Fresno county. Coverage extends into Madera county. Areas covered include Auberry, Bald Mountain, Millerton Lake, and Jesse Morrow Mountain.

FLIGHT LOCATION



Sources: Esri, HERE, DeLorme, Intermap, increment P Corp., GEBCO, USGS, FAO, NPS, NRCAN, GeoBase, IGN, Kadaster NL, Ordnance Survey, Esri Japan, METI, Esri China (Hong Kong), swisstopo, MapmyIndia, © OpenStreetMap contributors, and the GIS User Community

0 5 10 20 Miles

Index to Aerial Photography
Page Key

Scale of this index: 1:345,000

ABI-1940

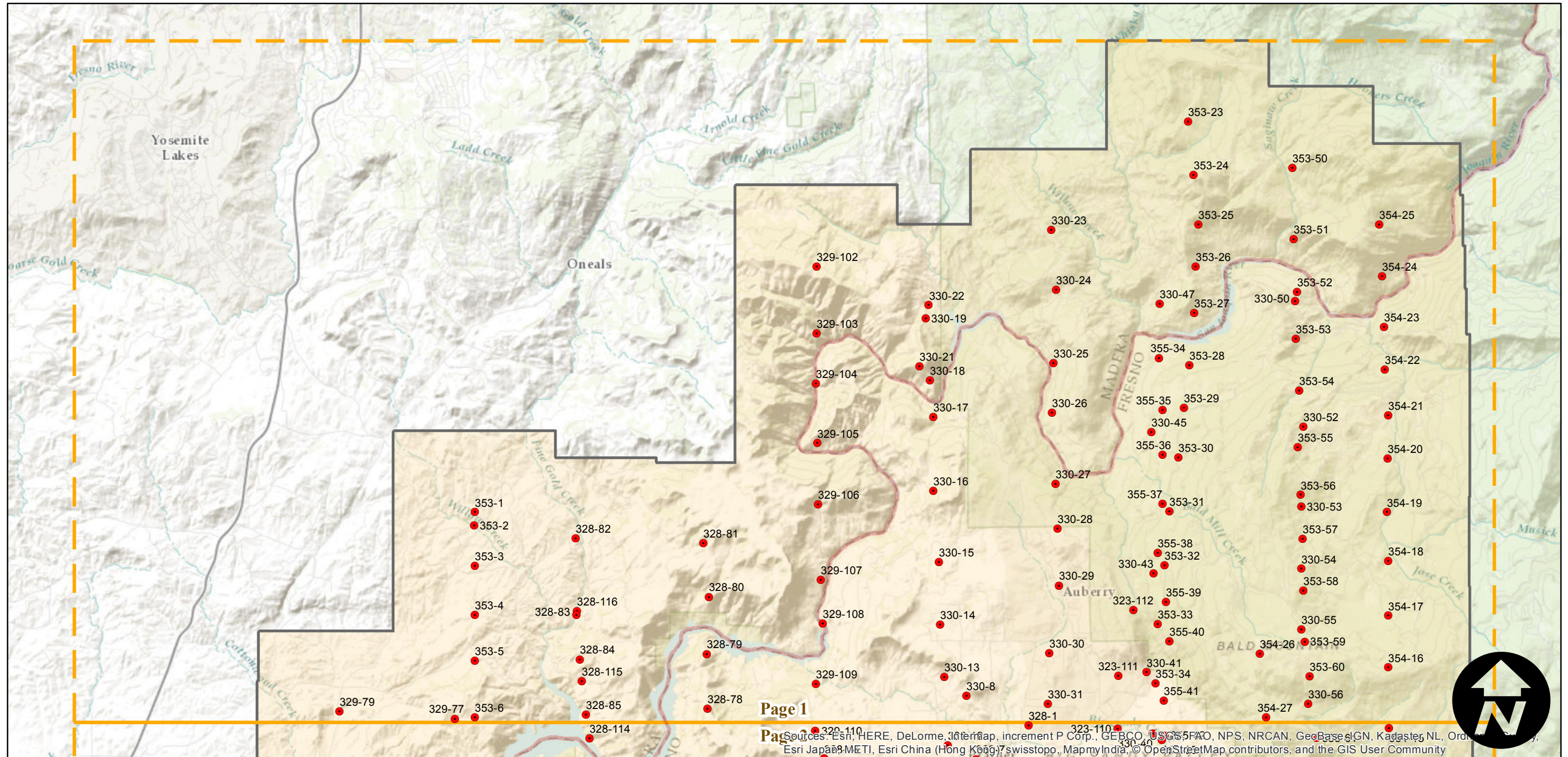
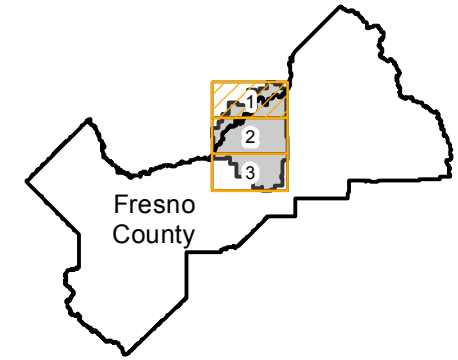
Counties: Fresno, Madera
Flight date(s): 01-01-1940 to 12-31-1940
Scale: 1:20,000
Overlap: 60%

Complete Metadata:
<http://www.library.ucsb.edu/mil/aerial-photography-information>

Note: Portion of central Fresno county. Coverage extends into Madera county. Areas covered include Auberry, Bald Mountain, Millerton Lake, and Jesse Morrow Mountain.

- MIL owns frame
- MIL does not own frame

FLIGHT LOCATION



0 2 4 8 Miles

Index to Aerial Photography
Page 1 of 3

Scale of this index: 1:115,000

Page 1
Page 2
Page 3
Sources: Esri, HERE, DeLorme, Intermap, increment P Corp., GEBCO, USGS, FAO, NPS, NRCAN, GeoBase, IGN, Kadaster NL, Ordnance Survey, Esri Japan, METI, Esri China (Hong Kong), Swisstopo, MapmyIndia, © OpenStreetMap contributors, and the GIS User Community

ABI-1940

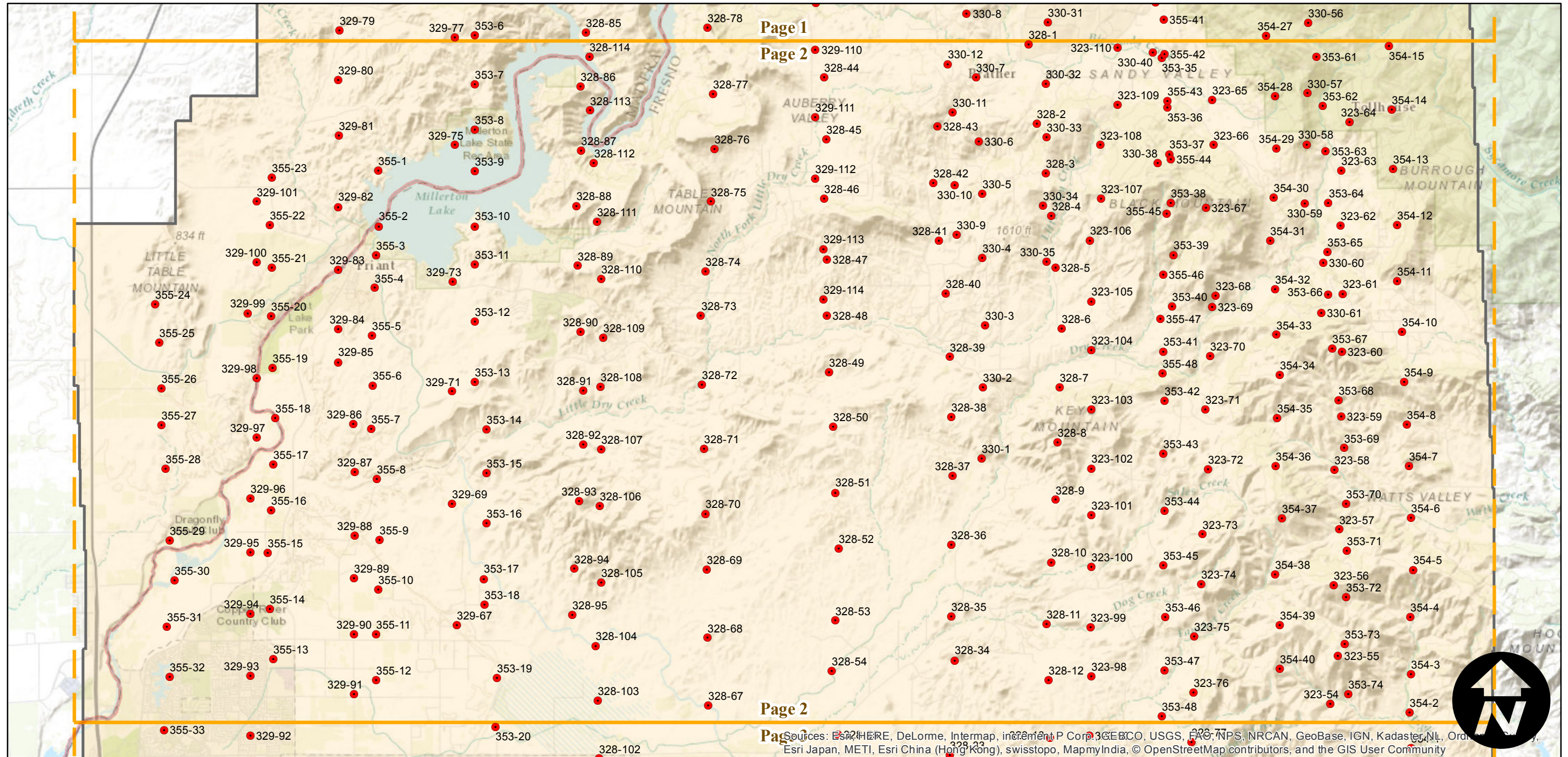
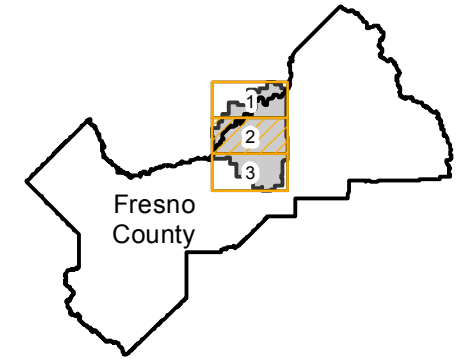
Counties: Fresno, Madera
Flight date(s): 01-01-1940 to 12-31-1940
Scale: 1:20,000
Overlap: 60%

Complete Metadata:
<http://www.library.ucsb.edu/mil/aerial-photography-information>

Note: Portion of central Fresno county. Coverage extends into Madera county. Areas covered include Auberry, Bald Mountain, Millerton Lake, and Jesse Morrow Mountain.

- MIL owns frame
- MIL does not own frame

FLIGHT LOCATION



0 2 4 8 Miles

Index to Aerial Photography
Page 2 of 3

Scale of this index: 1:115,000

Sources: Esri, HERE, DeLorme, Intermap, increment P Corp., GEBCO, USGS, FAO, NPS, NRCAN, GeoBase, IGN, Kadaster NL, Ordnance Survey, Esri Japan, METI, Esri China (Hong Kong), swisstopo, MapmyIndia, © OpenStreetMap contributors, and the GIS User Community

ABI-1940

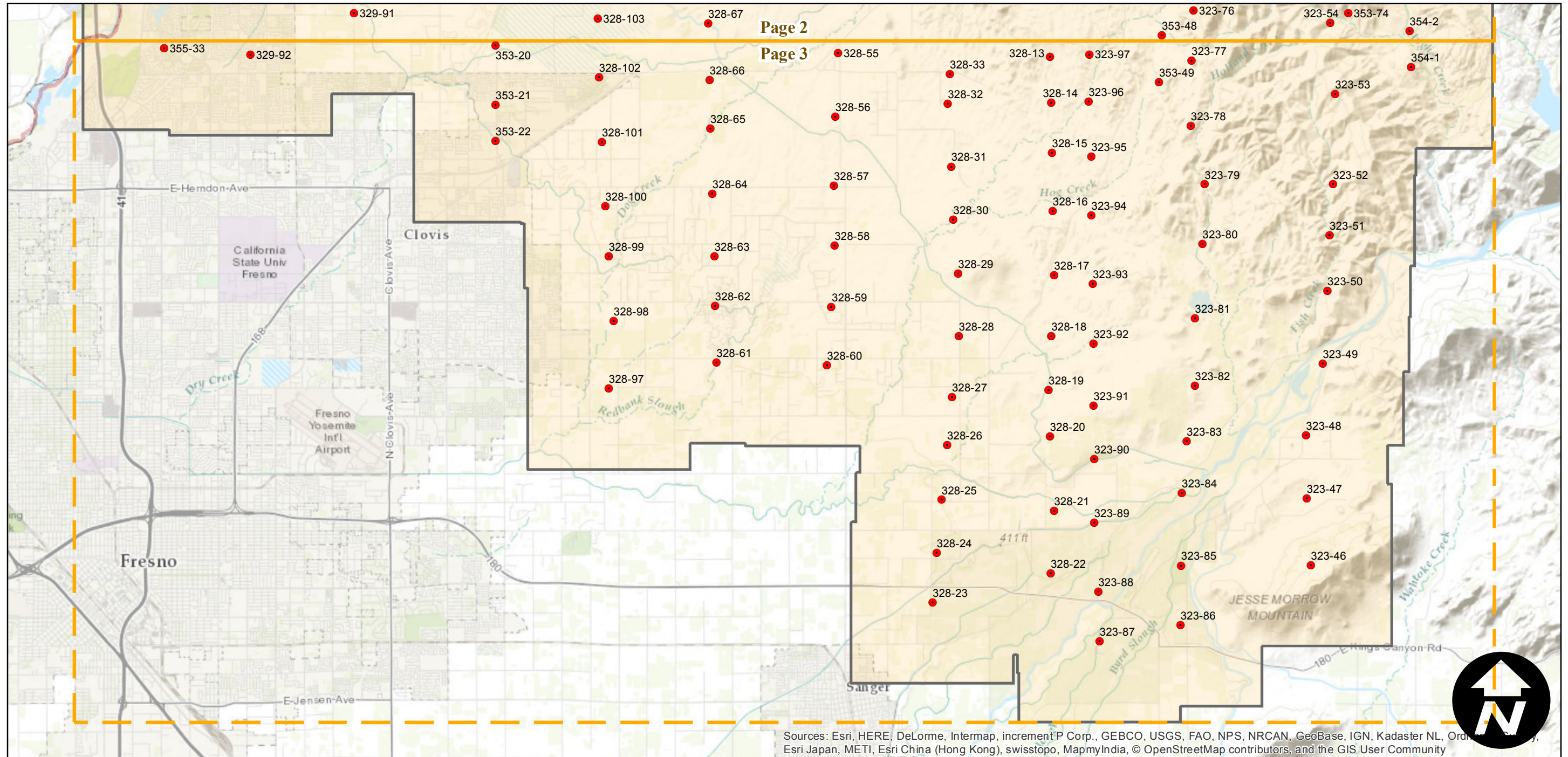
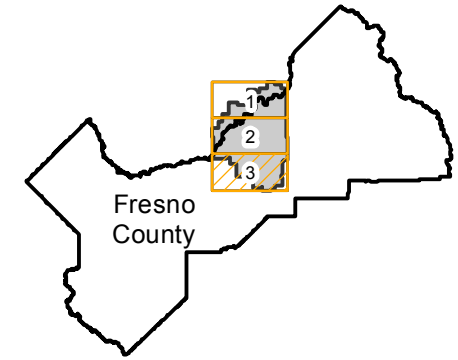
Counties: Fresno, Madera
 Flight date(s): 01-01-1940 to 12-31-1940
 Scale: 1:20,000
 Overlap: 60%

Complete Metadata:
<http://www.library.ucsb.edu/mil/aerial-photography-information>

Note: Portion of central Fresno county. Coverage extends into Madera county. Areas covered include Auberry, Bald Mountain, Millerton Lake, and Jesse Morrow Mountain.

- MIL owns frame
- MIL does not own frame

FLIGHT LOCATION



Sources: Esri, HERE, DeLorme, Intermap, increment P Corp., GEBCO, USGS, FAO, NPS, NRCAN, GeoBase, IGN, Kadaster NL, Ordnance Survey, Esri Japan, METI, Esri China (Hong Kong), swisstopo, MapmyIndia, © OpenStreetMap contributors, and the GIS User Community

0 2 4 8 Miles

Index to Aerial Photography
 Page 3 of 3

Scale of this index: 1:115,000