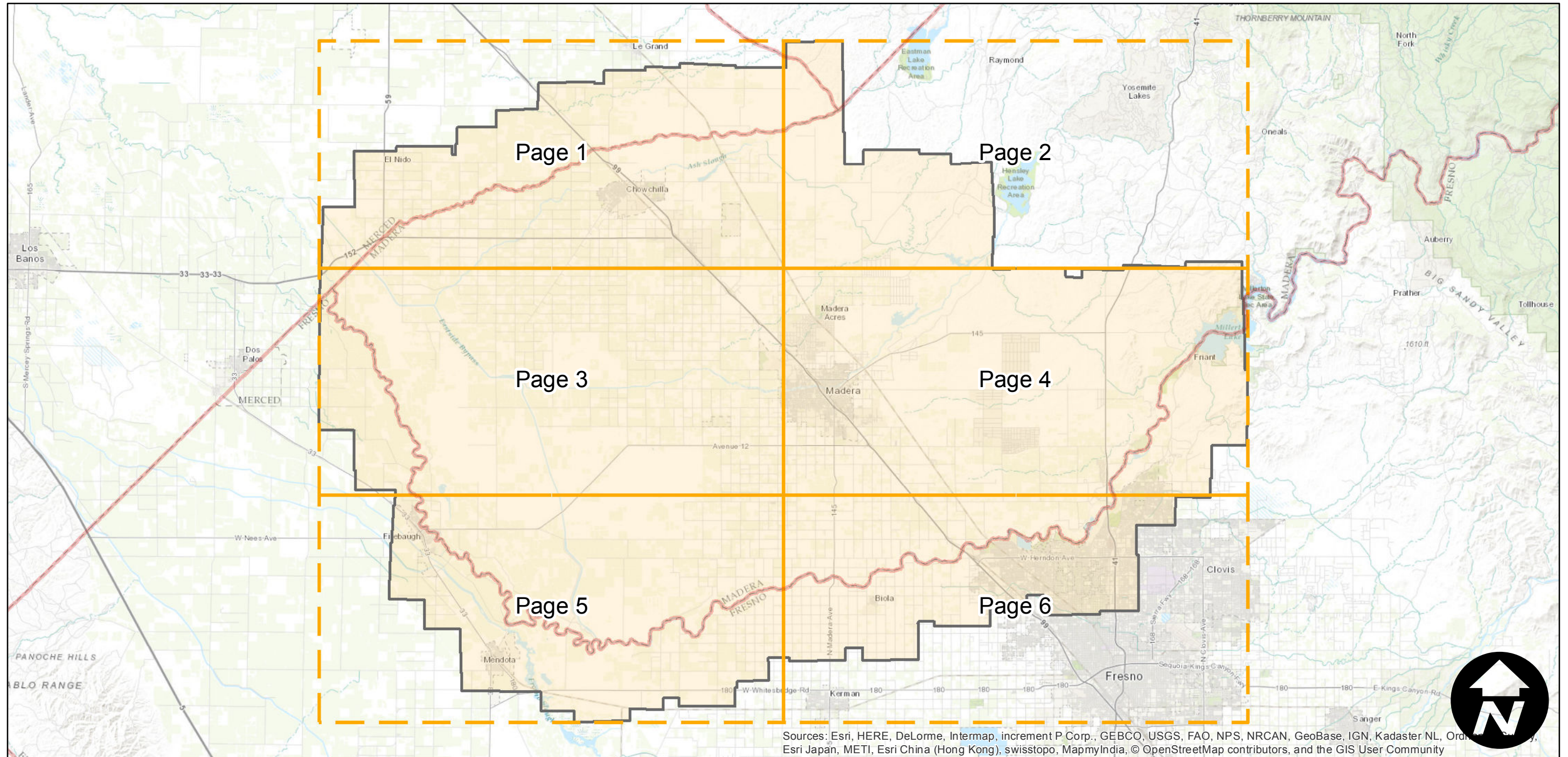
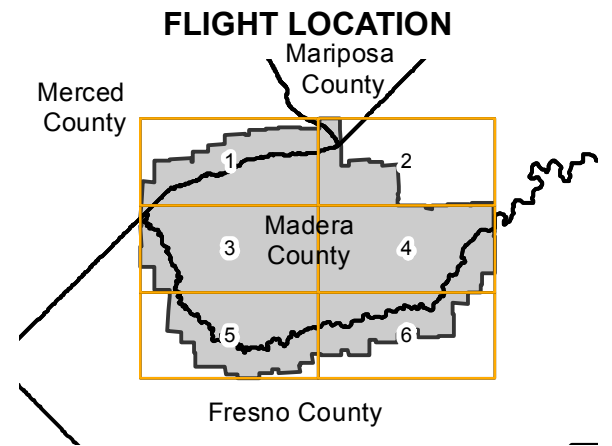


# ABH-1950

Counties: Madera, Merced  
Flight date(s): 01-30-1950 to 02-26-1950  
Scale: 1:20,000  
Overlap: 60%

Complete Metadata:  
<http://www.library.ucsb.edu/map-imagery-lab/aerial-photography-information>

Note: Western portion of Madera County. Not all frames held by UCSB Library. Coverage extends into Merced County.



Sources: Esri, HERE, DeLorme, Intermap, increment P Corp., GEBCO, USGS, FAO, NPS, NRCAN, GeoBase, IGN, Kadaster NL, Ordnance Survey, Esri Japan, METI, Esri China (Hong Kong), swisstopo, MapmyIndia, © OpenStreetMap contributors, and the GIS User Community

0 5 10 20 Miles

Index to Aerial Photography  
Page Key

Scale of this index: 1:350,000

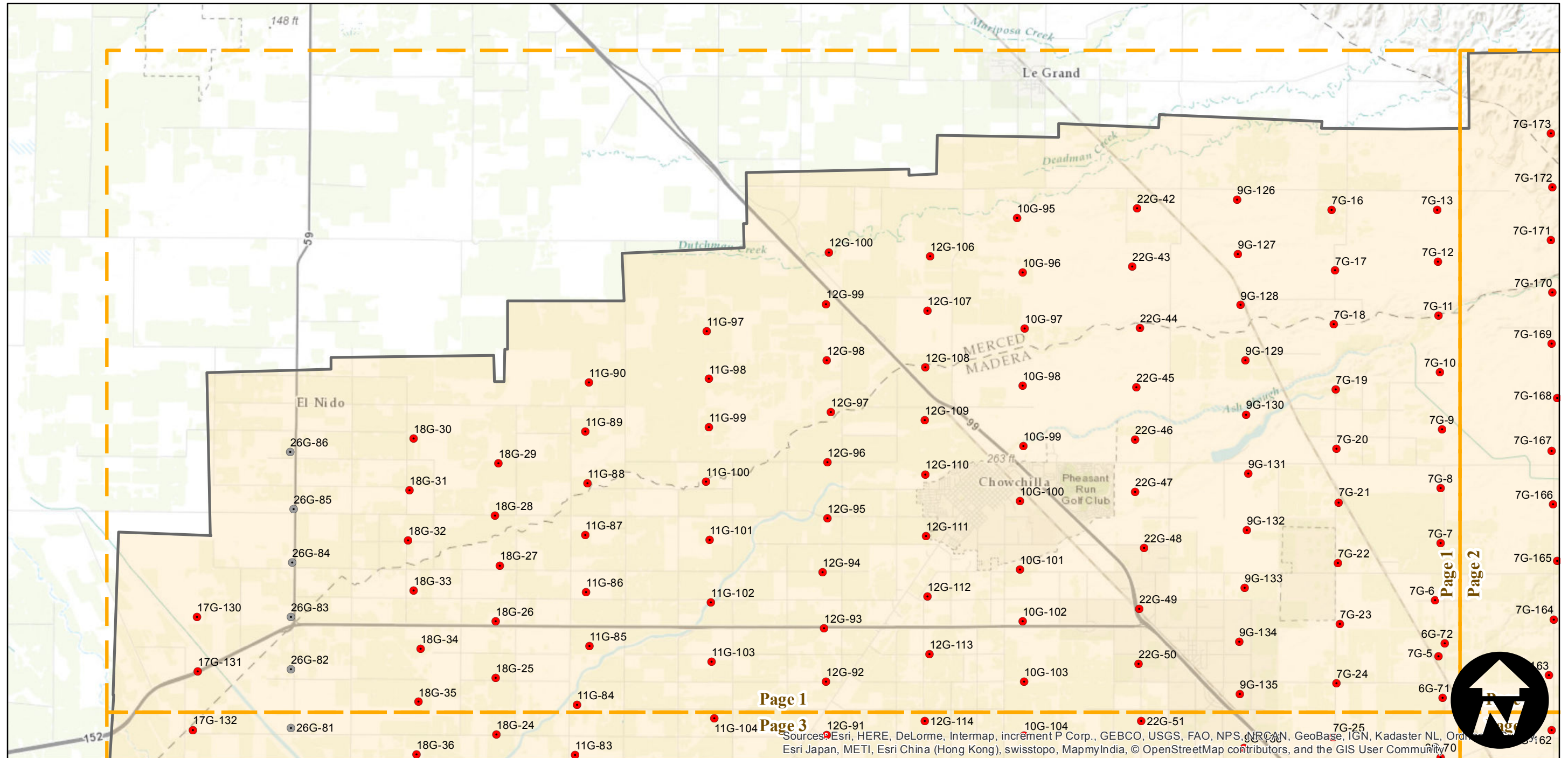
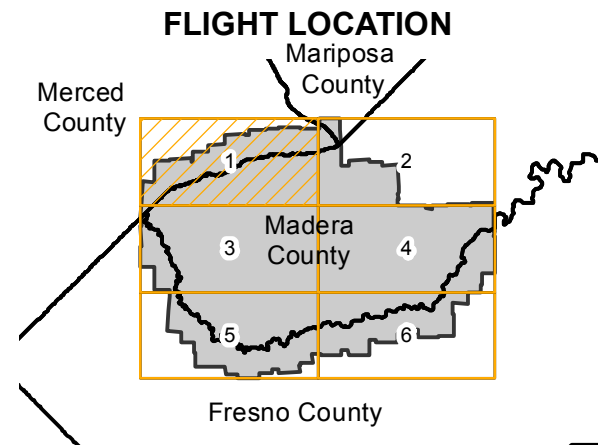
# ABH-1950

Counties: Madera, Merced  
 Flight date(s): 01-30-1950 to 02-26-1950  
 Scale: 1:20,000  
 Overlap: 60%

Complete Metadata:  
<http://www.library.ucsb.edu/map-imagery-lab/aerial-photography-information>

Note: Western portion of Madera County. Not all frames held by UCSB Library. Coverage extends into Merced County.

- MIL owns frame
- MIL does not own frame



0 2 4 8 Miles

Index to Aerial Photography  
 Page 1 of 6

Scale of this index: 1:120,000

Sources: Esri, HERE, DeLorme, Intermap, increment P Corp., GEBCO, USGS, FAO, NPS, NRCAN, GeoBase, IGN, Kadaster NL, Ordnance Survey, Esri Japan, METI, Esri China (Hong Kong), swisstopo, MapmyIndia, © OpenStreetMap contributors, and the GIS User Community

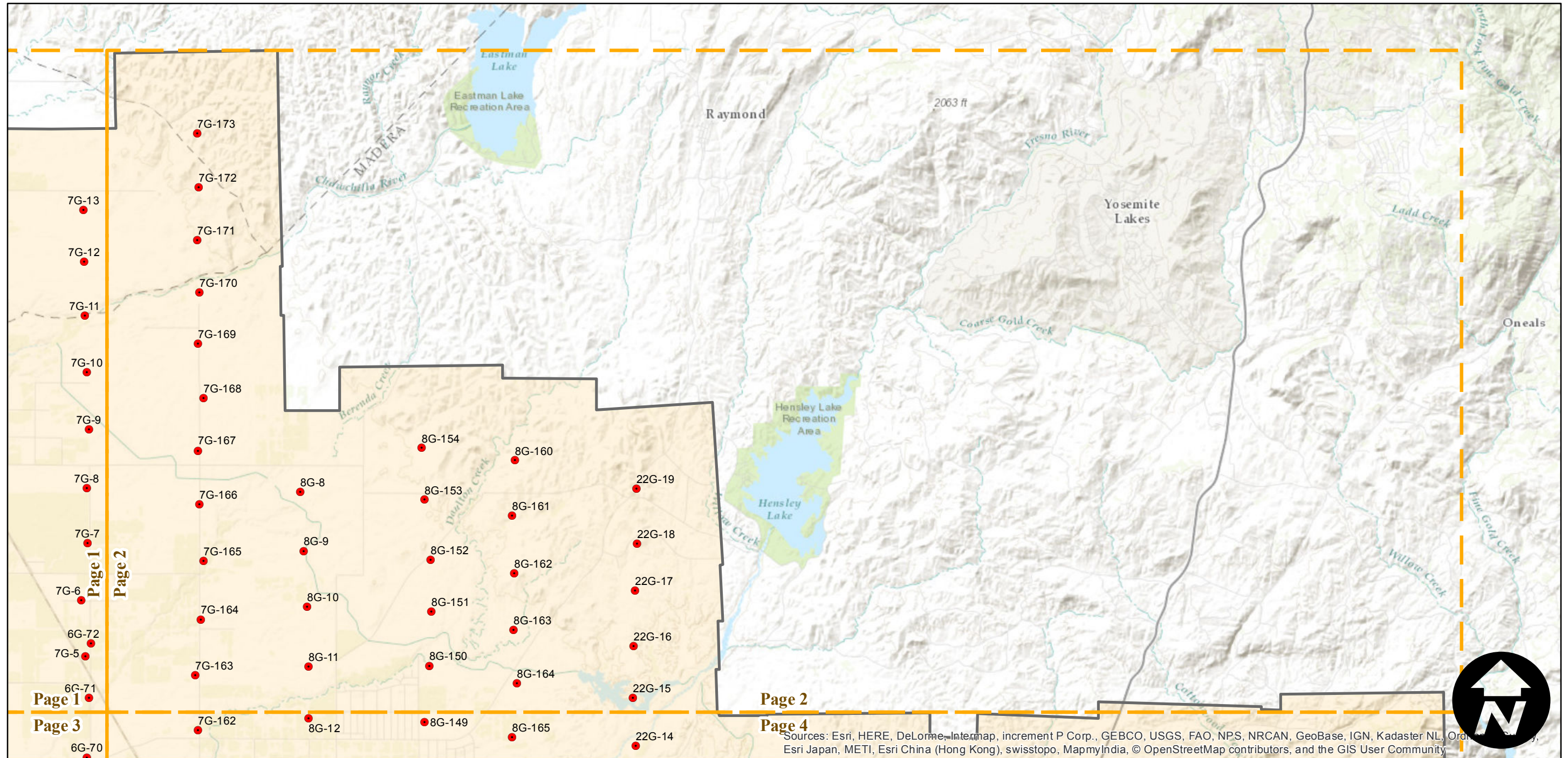
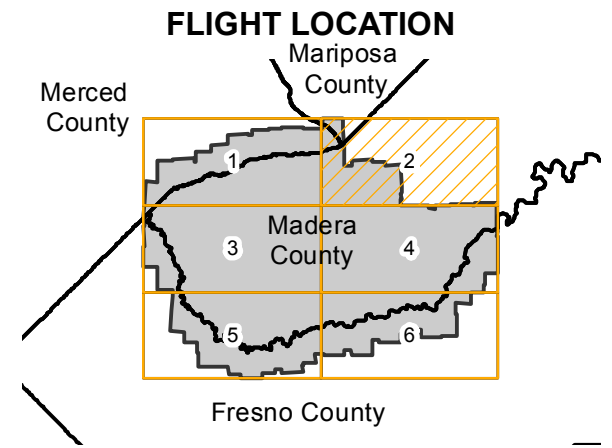
# ABH-1950

Counties: Madera, Merced  
 Flight date(s): 01-30-1950 to 02-26-1950  
 Scale: 1:20,000  
 Overlap: 60%

Complete Metadata:  
<http://www.library.ucsb.edu/map-imagery-lab/aerial-photography-information>

Note: Western portion of Madera County. Not all frames held by UCSB Library. Coverage extends into Merced County.

- MIL owns frame
- MIL does not own frame



0 2 4 8 Miles

Index to Aerial Photography  
 Page 2 of 6

Scale of this index: 1:120,000

Sources: Esri, HERE, DeLorme, Intermap, increment P Corp., GEBCO, USGS, FAO, NPS, NRCAN, GeoBase, IGN, Kadaster NL, Ordnance Survey, Esri Japan, METI, Esri China (Hong Kong), swisstopo, MapmyIndia, © OpenStreetMap contributors, and the GIS User Community

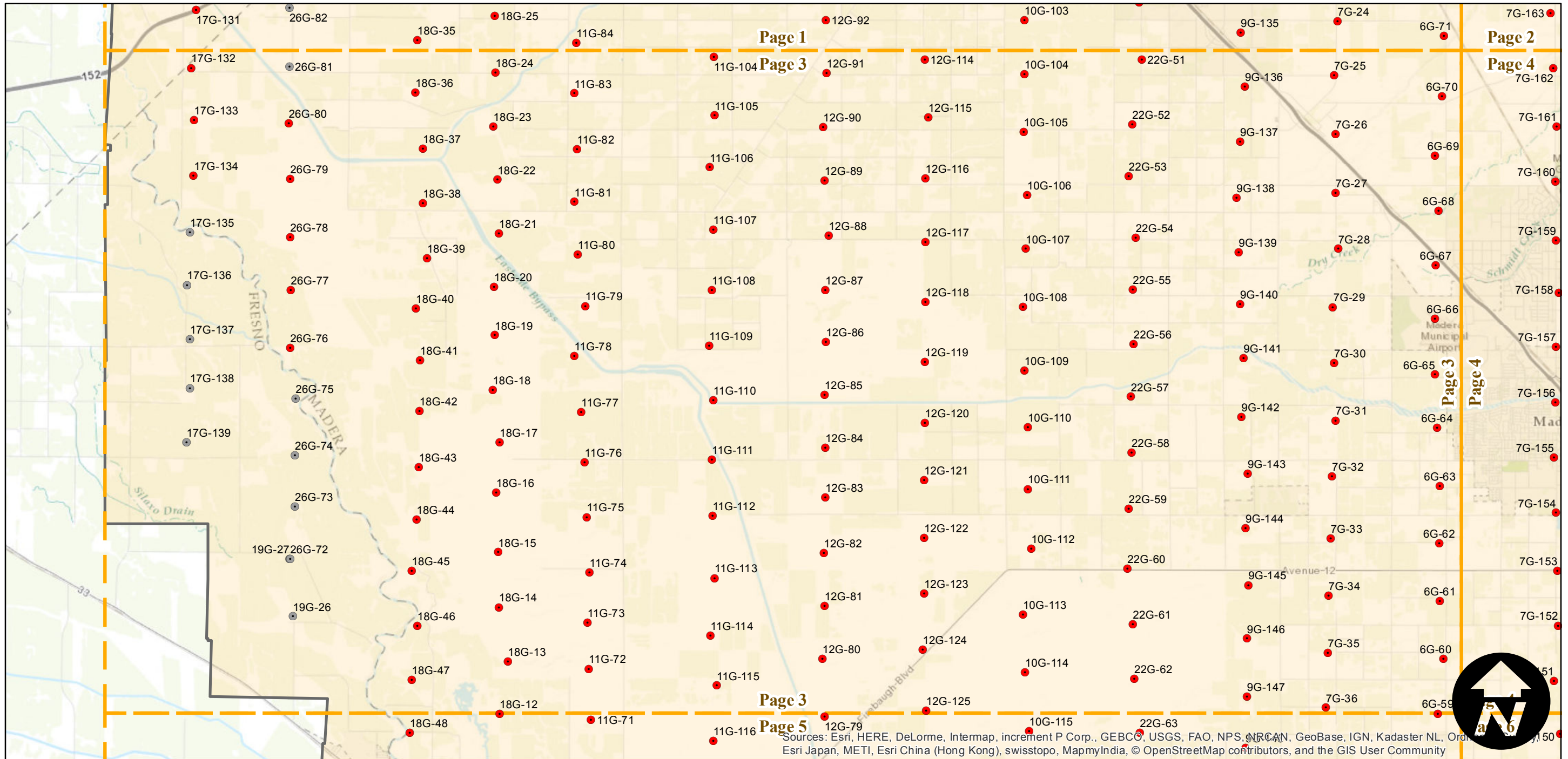
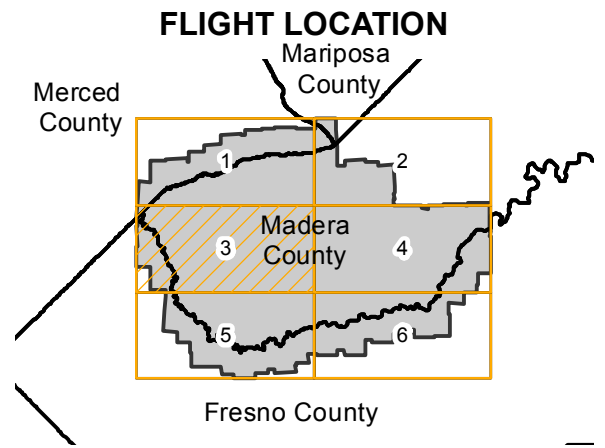
# ABH-1950

Counties: Madera, Merced  
Flight date(s): 01-30-1950 to 02-26-1950  
Scale: 1:20,000  
Overlap: 60%

Complete Metadata:  
<http://www.library.ucsb.edu/map-imagery-lab/aerial-photography-information>

Note: Western portion of Madera County. Not all frames held by UCSB Library. Coverage extends into Merced County.

- MIL owns frame
- MIL does not own frame



Sources: Esri, HERE, DeLorme, Intermap, increment P Corp., GEBCO, USGS, FAO, NPS, NRCAN, GeoBase, IGN, Kadaster NL, Ordnance Survey, Esri Japan, METI, Esri China (Hong Kong), swisstopo, MapmyIndia, © OpenStreetMap contributors, and the GIS User Community

0 2 4 8 Miles

Index to Aerial Photography  
Page 3 of 6

Scale of this index: 1:120,000



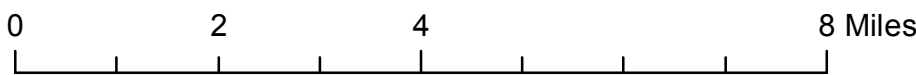
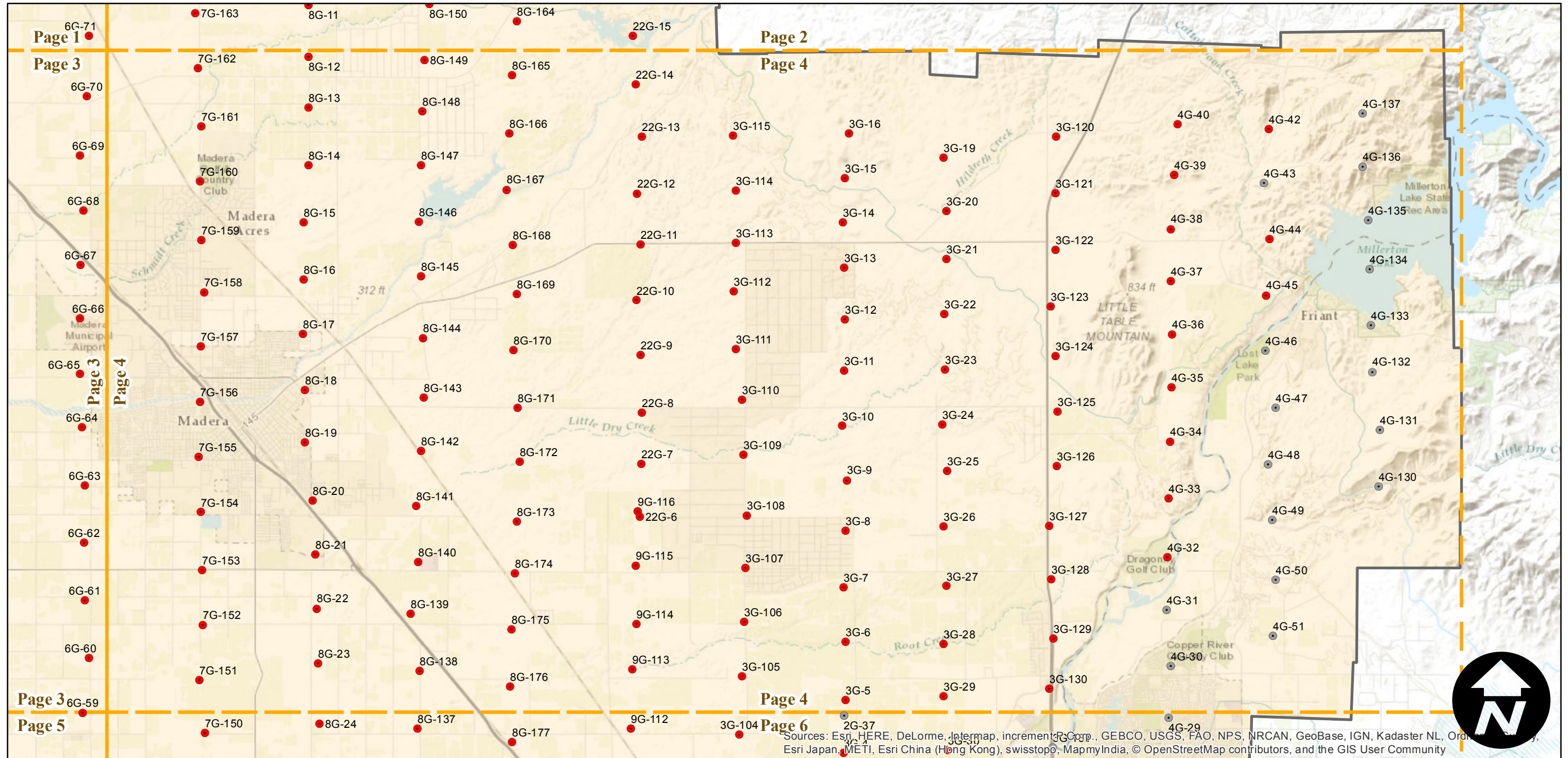
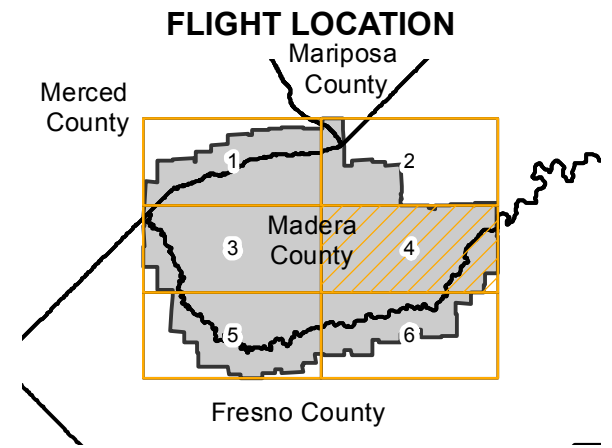
# ABH-1950

Counties: Madera, Merced  
 Flight date(s): 01-30-1950 to 02-26-1950  
 Scale: 1:20,000  
 Overlap: 60%

Complete Metadata:  
<http://www.library.ucsb.edu/map-imagery-lab/aerial-photography-information>

Note: Western portion of Madera County. Not all frames held by UCSB Library. Coverage extends into Merced County.

- MIL owns frame
- MIL does not own frame



Sources: Esri, HERE, DeLorme, Intermap, increment P Corp., GEBCO, USGS, FAO, NPS, NRCAN, GeoBase, IGN, Kadaster NL, Ordnance Survey, Esri Japan, METI, Esri China (Hong Kong), swisstopo, MapmyIndia, © OpenStreetMap contributors, and the GIS User Community

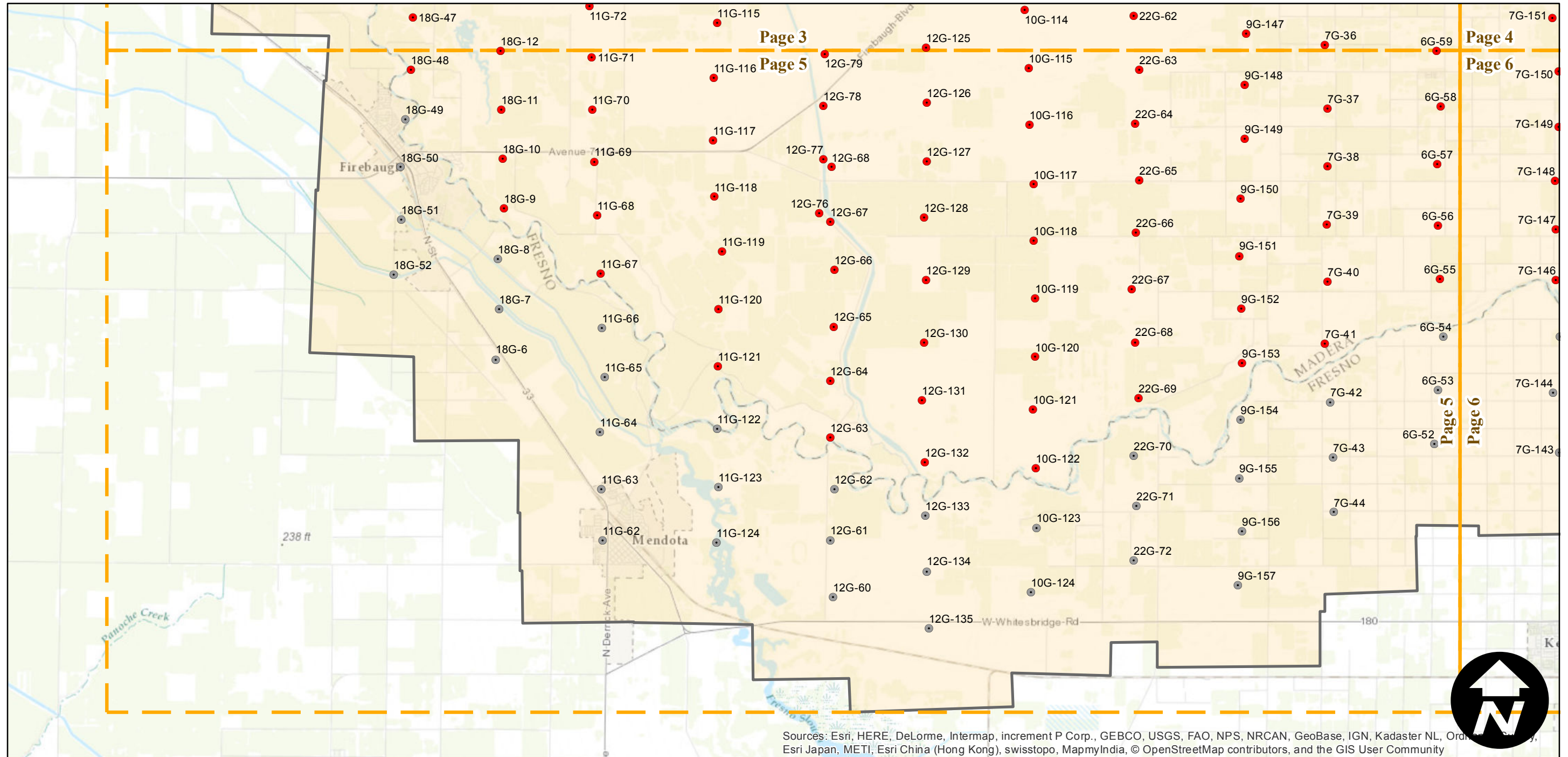
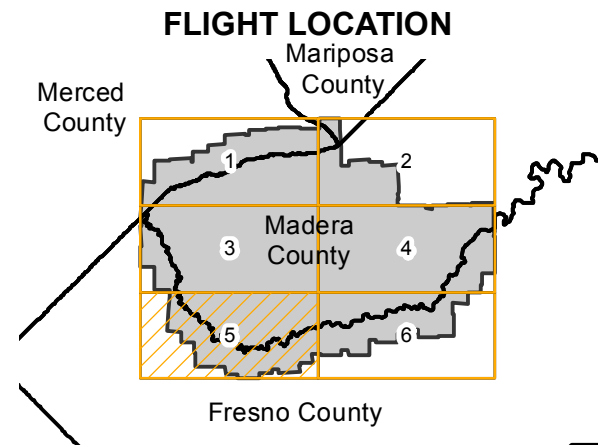
# ABH-1950

Counties: Madera, Merced  
 Flight date(s): 01-30-1950 to 02-26-1950  
 Scale: 1:20,000  
 Overlap: 60%

Complete Metadata:  
<http://www.library.ucsb.edu/map-imagery-lab/aerial-photography-information>

Note: Western portion of Madera County. Not all frames held by UCSB Library. Coverage extends into Merced County.

- MIL owns frame
- MIL does not own frame



Sources: Esri, HERE, DeLorme, Intermap, increment P Corp., GEBCO, USGS, FAO, NPS, NRCAN, GeoBase, IGN, Kadaster NL, Ordnance Survey, Esri Japan, METI, Esri China (Hong Kong), swisstopo, MapmyIndia, © OpenStreetMap contributors, and the GIS User Community

0 2 4 8 Miles

Index to Aerial Photography  
 Page 5 of 6

Scale of this index: 1:120,000

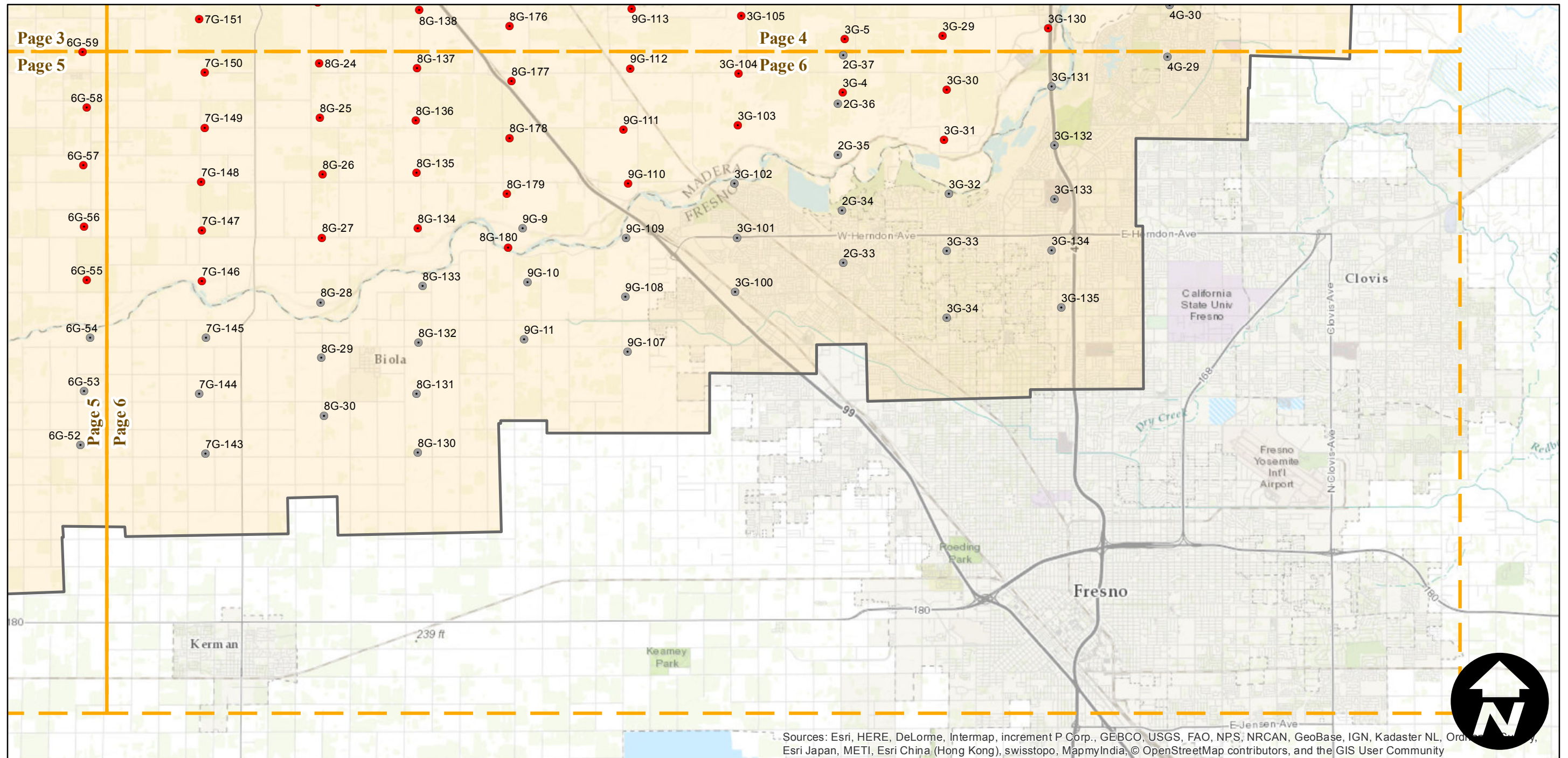
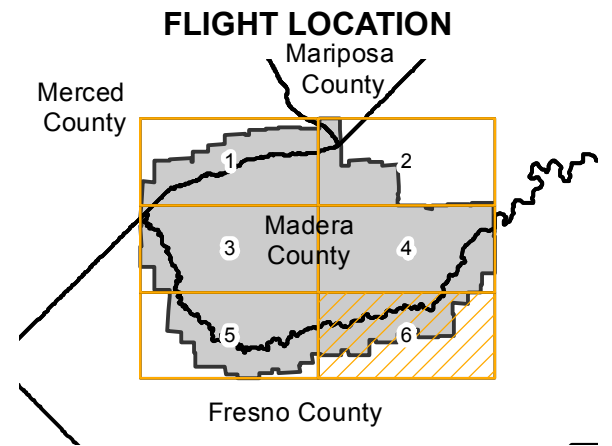
# ABH-1950

Counties: Madera, Merced  
 Flight date(s): 01-30-1950 to 02-26-1950  
 Scale: 1:20,000  
 Overlap: 60%

Complete Metadata:  
<http://www.library.ucsb.edu/map-imagery-lab/aerial-photography-information>

Note: Western portion of Madera County. Not all frames held by UCSB Library. Coverage extends into Merced County.

- MIL owns frame
- MIL does not own frame



Sources: Esri, HERE, DeLorme, Intermap, increment P Corp., GEBCO, USGS, FAO, NPS, NRCAN, GeoBase, IGN, Kadaster NL, Ordnance Survey, Esri Japan, METI, Esri China (Hong Kong), swisstopo, MapmyIndia, © OpenStreetMap contributors, and the GIS User Community

0 2 4 8 Miles

Index to Aerial Photography  
 Page 6 of 6

Scale of this index: 1:120,000