

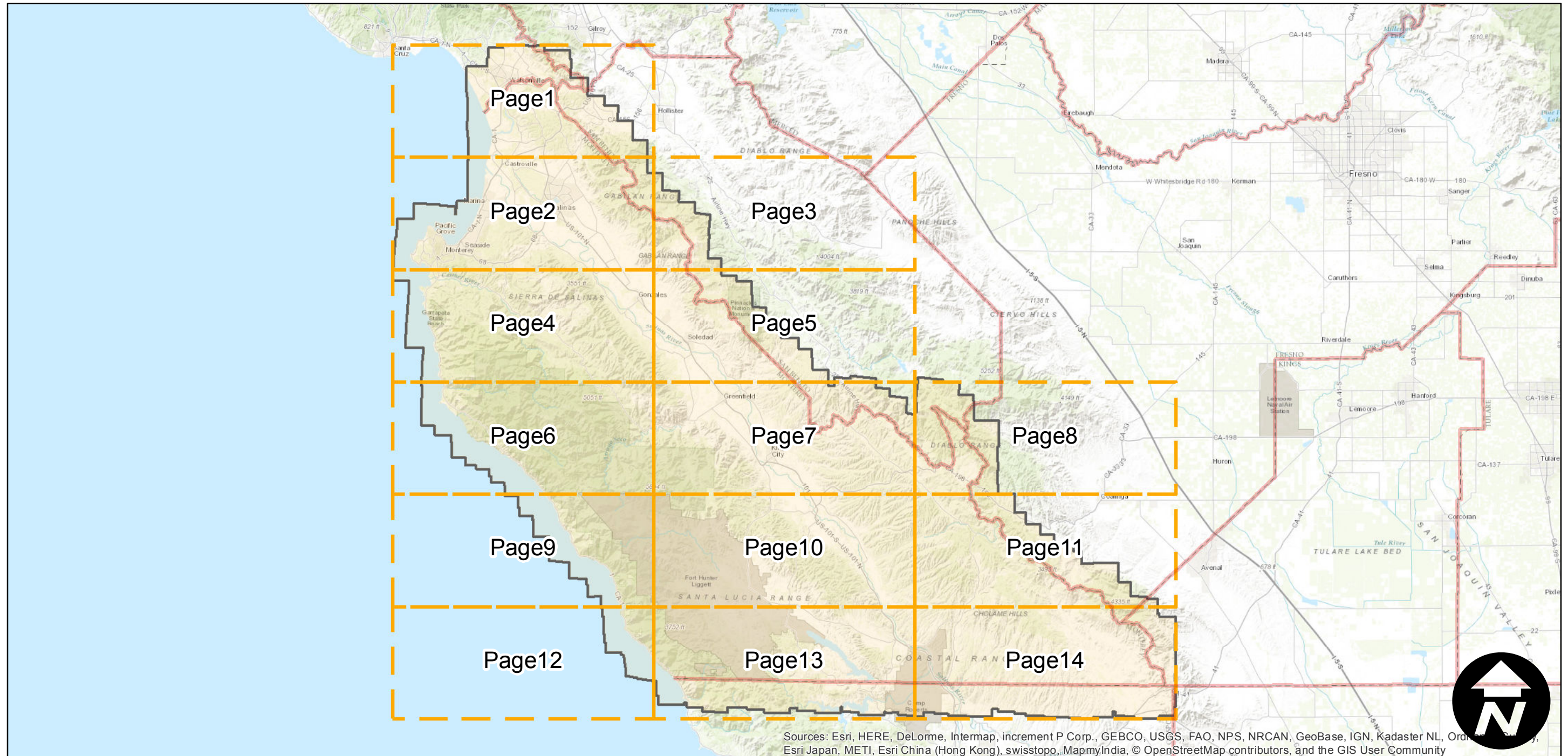
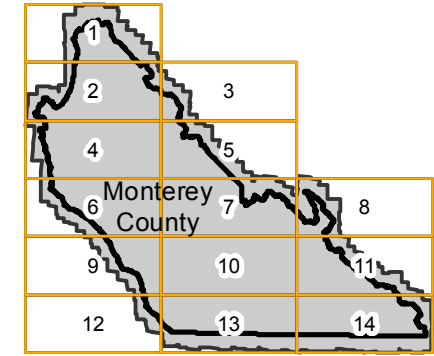
# ABG-1956

Counties: Monterey, Fresno, San Benito, San Luis Obispo, Santa Cruz  
Flight date(s): 05-01-1956 to 10-26-1956  
Scale: 1:20,000  
Overlap: 60%

Note: Monterey County. Areas covered include Watsonville, Salinas, Monterey, Soledad, King City, and Bradley. Coverage extends into surrounding counties.

Complete Metadata:  
<http://www.library.ucsb.edu/map-imagery-lab/aerial-photography-information>

## FLIGHT LOCATION



Sources: Esri, HERE, DeLorme, Intermap, increment P Corp., GEBCO, USGS, FAO, NPS, NRCAN, GeoBase, IGN, Kadaster NL, Ordnance Survey, Esri Japan, METI, Esri China (Hong Kong), swisstopo, MapmyIndia, © OpenStreetMap contributors, and the GIS User Community



Index to Aerial Photography  
Page Key

Scale of this index: 1:850,000

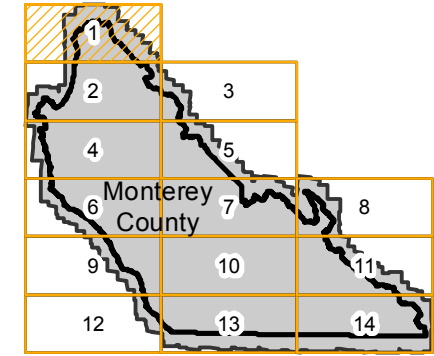


# ABG-1956

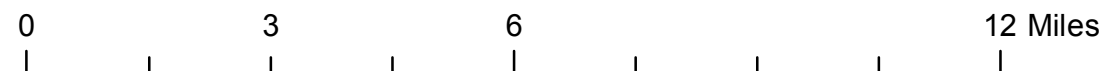
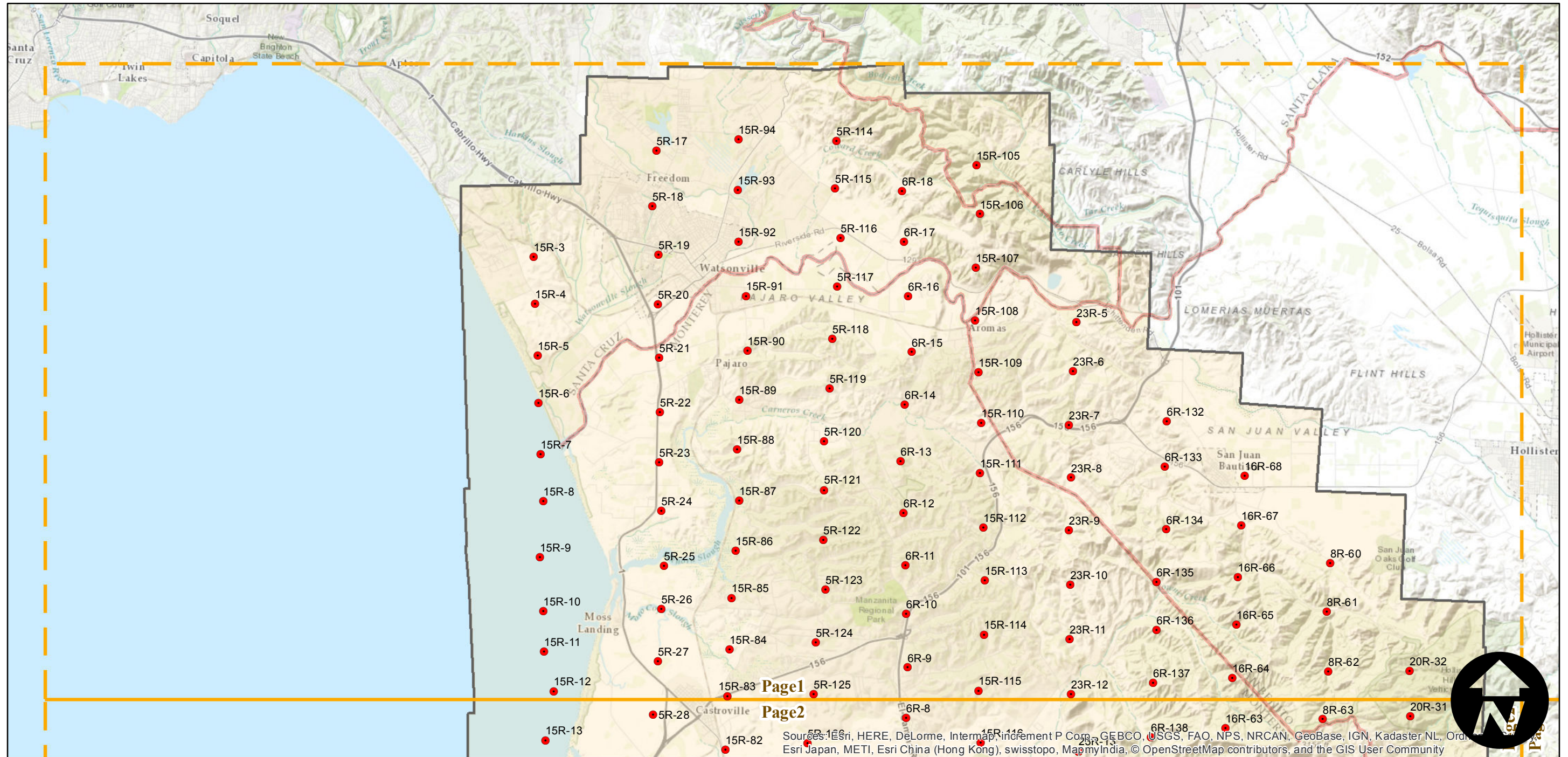
Counties: Monterey, Fresno, San Benito, San Luis Obispo, Santa Cruz  
Flight date(s): 05-01-1956 to 10-26-1956  
Scale: 1:20,000  
Overlap: 60%

Note: Monterey County. Areas covered include Watsonville, Salinas, Monterey, Soledad, King City, and Bradley. Coverage extends into surrounding counties.

## FLIGHT LOCATION



Complete Metadata:  
<http://www.library.ucsb.edu/map-imagery-lab/aerial-photography-information>



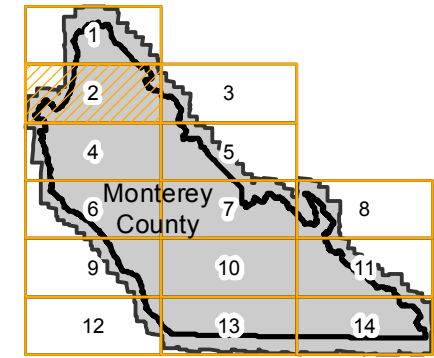


# ABG-1956

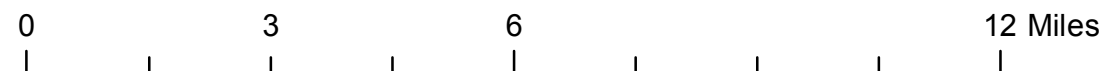
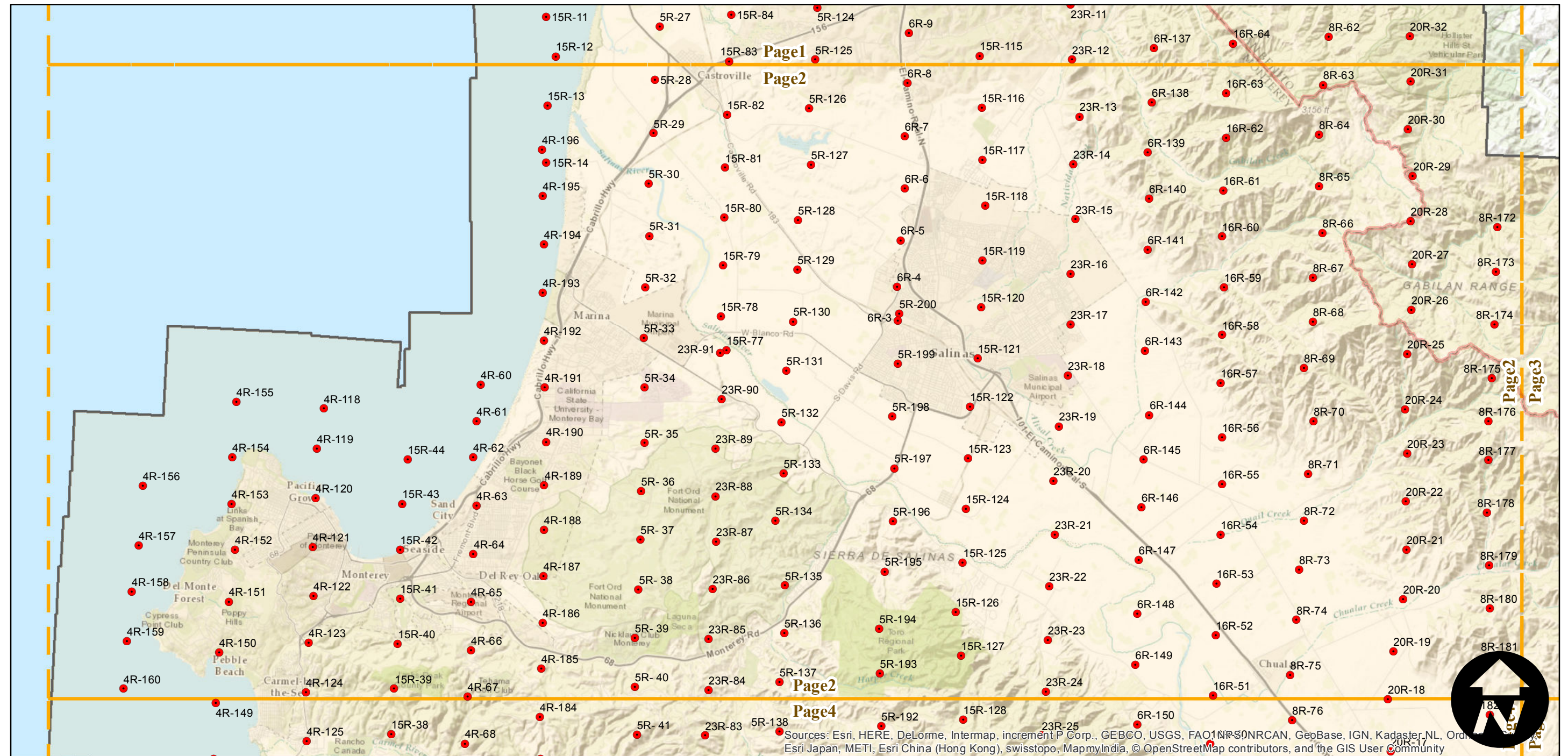
Counties: Monterey, Fresno, San Benito, San Luis Obispo, Santa Cruz  
Flight date(s): 05-01-1956 to 10-26-1956  
Scale: 1:20,000  
Overlap: 60%

Note: Monterey County. Areas covered include Watsonville, Salinas, Monterey, Soledad, King City, and Bradley. Coverage extends into surrounding counties.

## FLIGHT LOCATION



Complete Metadata:  
<http://www.library.ucsb.edu/map-imagery-lab/aerial-photography-information>



Sources: Esri, HERE, DeLorme, Intermap, increment P Corp., GEBCO, USGS, FAO, NPS, NRCAN, GeoBase, IGN, Kadaster NL, Ordnance Survey, Esri Japan, METI, Esri China (Hong Kong), swisstopo, MappyIndia, © OpenStreetMap contributors, and the GIS User Community

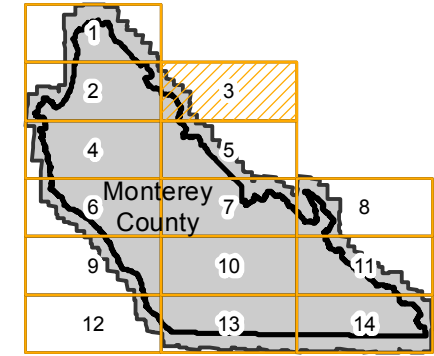


# ABG-1956

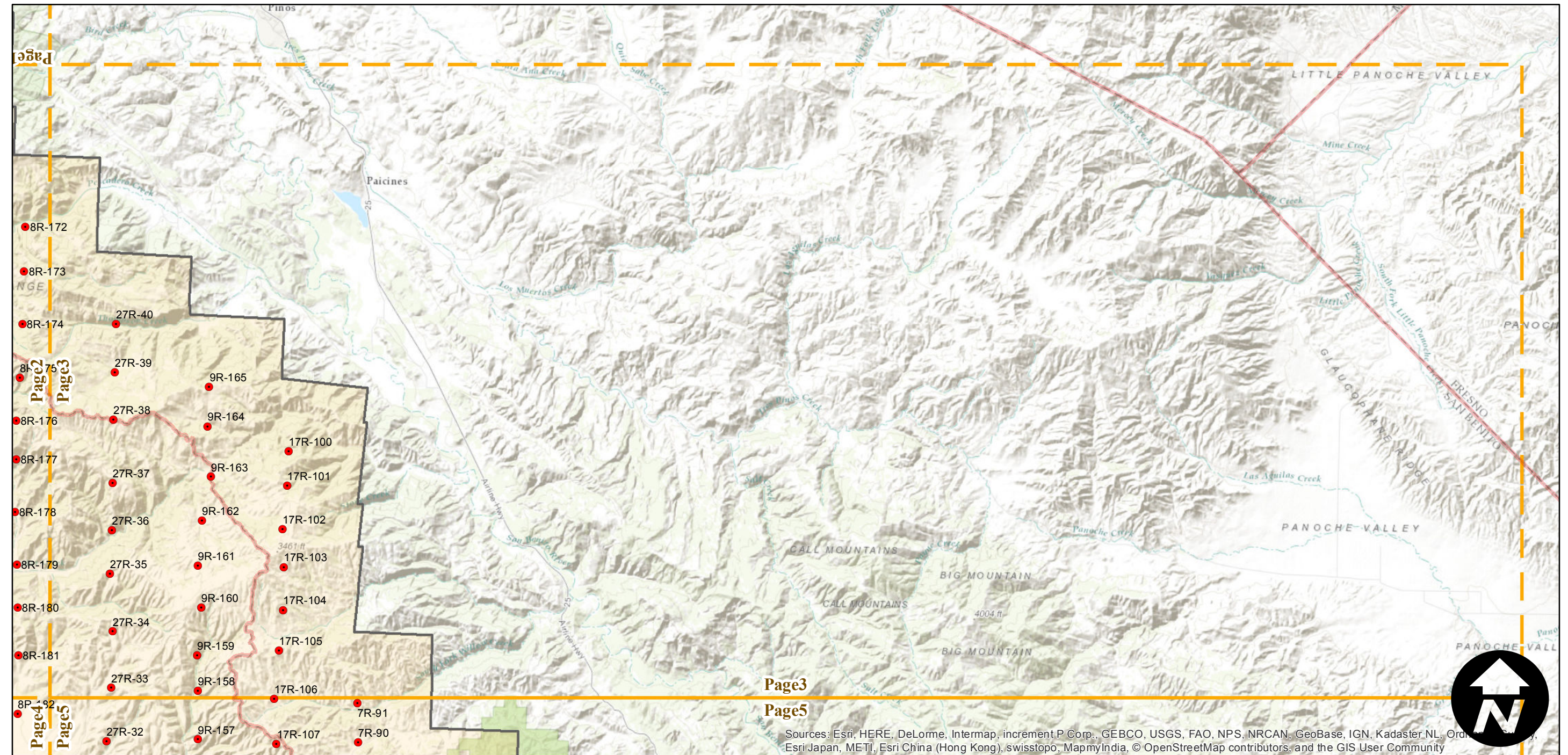
Counties: Monterey, Fresno, San Benito, San Luis Obispo, Santa Cruz  
Flight date(s): 05-01-1956 to 10-26-1956  
Scale: 1:20,000  
Overlap: 60%

Note: Monterey County. Areas covered include Watsonville, Salinas, Monterey, Soledad, King City, and Bradley. Coverage extends into surrounding counties.

## FLIGHT LOCATION



Complete Metadata:  
<http://www.library.ucsb.edu/map-imagery-lab/aerial-photography-information>



0 3 6 12 Miles

Index to Aerial Photography  
Page 3 of 14

Scale of this index: 1:150,000

Sources: Esri, HERE, DeLorme, Intermap, increment P Corp., GEBCO, USGS, FAO, NPS, NRCAN, GeoBase, IGN, Kadaster NL, Ordnance Survey, Esri Japan, METI, Esri China (Hong Kong), swisstopo, MapmyIndia, © OpenStreetMap contributors, and the GIS User Community

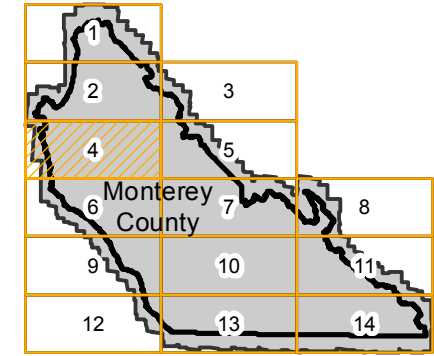


# ABG-1956

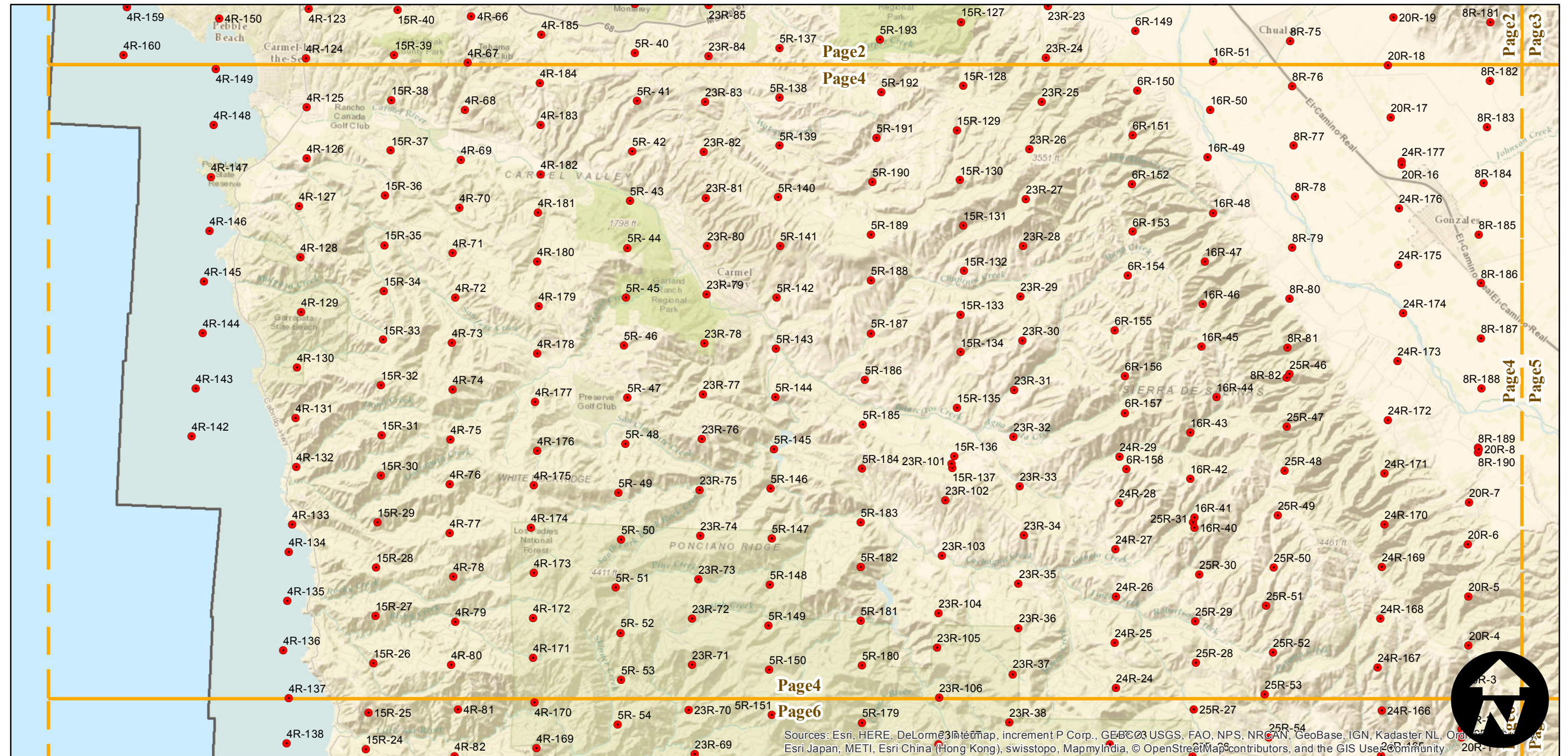
Counties: Monterey, Fresno, San Benito, San Luis Obispo, Santa Cruz  
Flight date(s): 05-01-1956 to 10-26-1956  
Scale: 1:20,000  
Overlap: 60%

Note: Monterey County. Areas covered include Watsonville, Salinas, Monterey, Soledad, King City, and Bradley. Coverage extends into surrounding counties.

## FLIGHT LOCATION



Complete Metadata:  
<http://www.library.ucsb.edu/map-imagery-lab/aerial-photography-information>



Sources: Esri, HERE, DeLorme, Intermap, increment P Corp., GEBCO, USGS, FAO, NPS, NRCAN, GeoBase, IGN, Kadaster NL, Ordnance Survey, Esri Japan, METI, Esri China (Hong Kong), swisstopo, MapmyIndia, © OpenStreetMap contributors, and the GIS User Community

0 3 6 12 Miles

Index to Aerial Photography  
Page 4 of 14

Scale of this index: 1:150,000

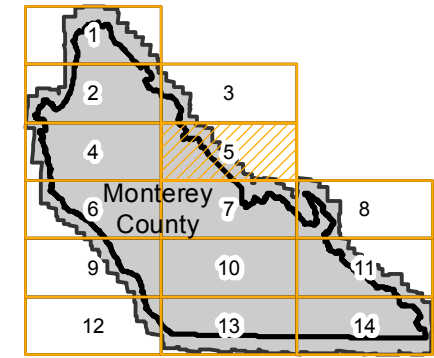


# ABG-1956

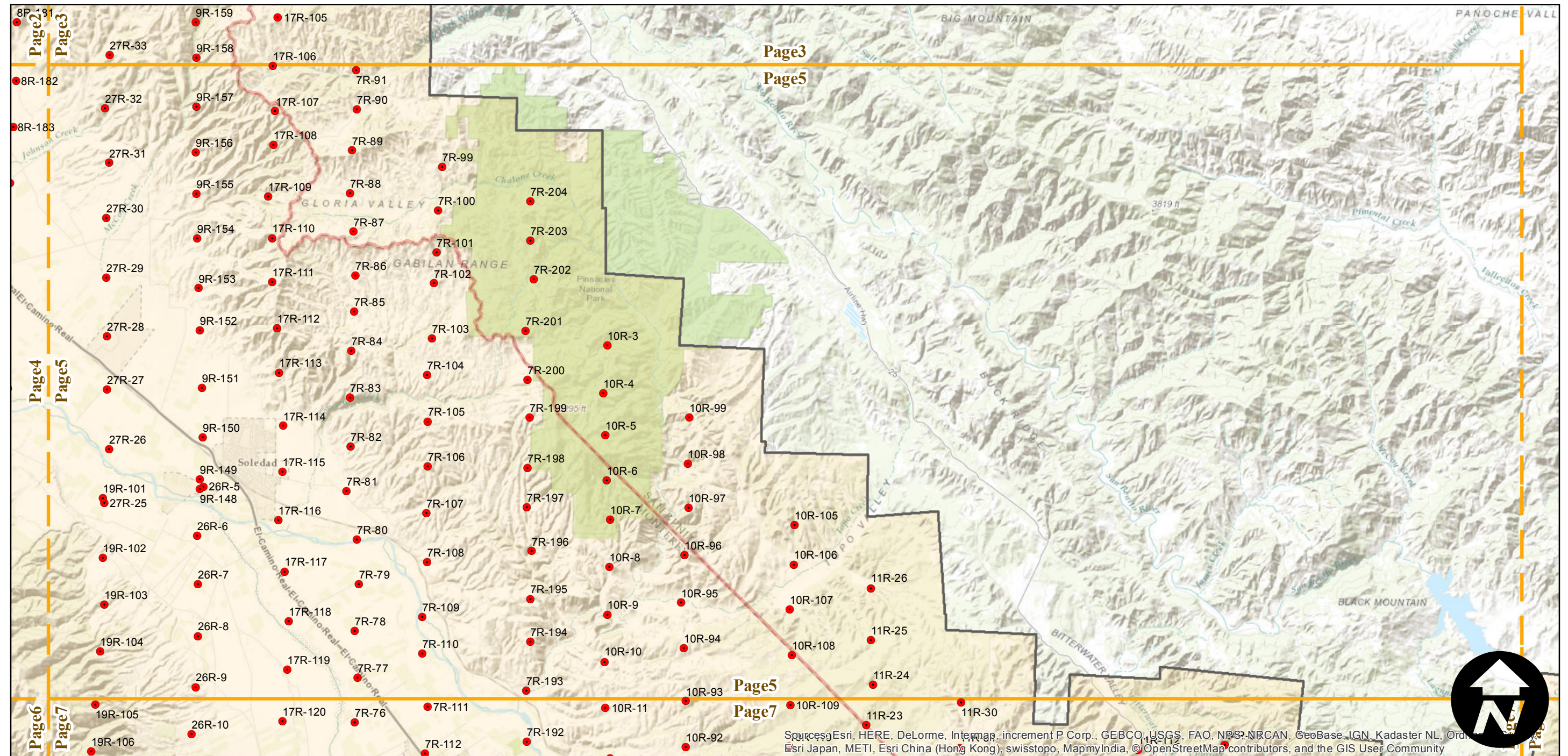
Counties: Monterey, Fresno, San Benito, San Luis Obispo, Santa Cruz  
 Flight date(s): 05-01-1956 to 10-26-1956  
 Scale: 1:20,000  
 Overlap: 60%

Note: Monterey County. Areas covered include Watsonville, Salinas, Monterey, Soledad, King City, and Bradley. Coverage extends into surrounding counties.

## FLIGHT LOCATION



Complete Metadata:  
<http://www.library.ucsb.edu/map-imagery-lab/aerial-photography-information>



0 3 6 12 Miles

Index to Aerial Photography  
 Page 5 of 14

Scale of this index: 1:150,000

Source: Esri, HERE, DeLorme, Intermap, increment P Corp., GEBCO, USGS, FAO, NPS, NRCAN, GeoBase, IGN, Kadaster NL, Ordnance Survey, Esri Japan, METI, Esri China (Hong Kong), swisstopo, MapmyIndia, © OpenStreetMap contributors, and the GIS User Community



# ABG-1956

Counties: Monterey, Fresno, San Benito, San Luis Obispo, Santa Cruz

Flight date(s): 05-01-1956 to 10-26-1956

Scale: 1:20,000

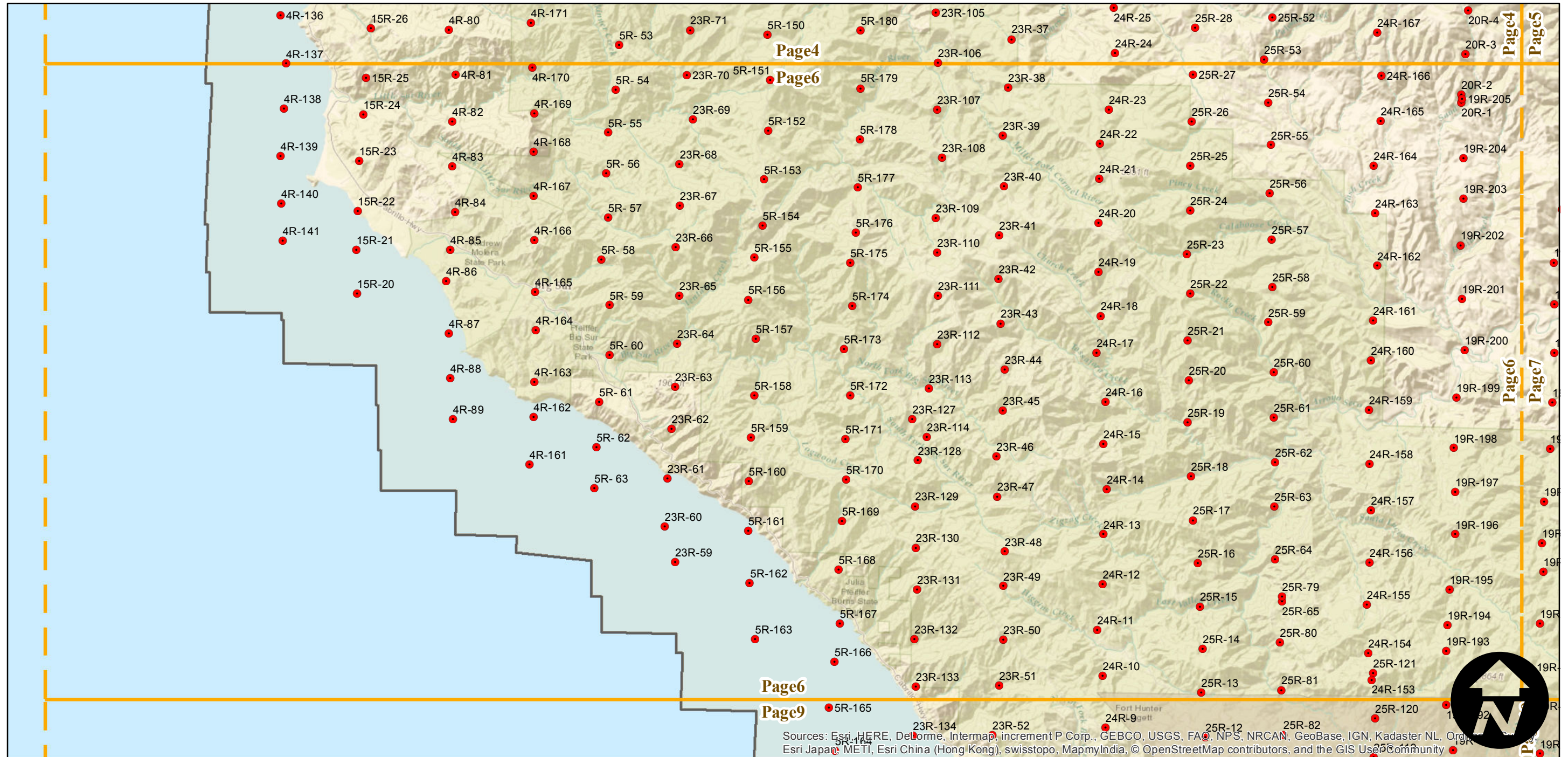
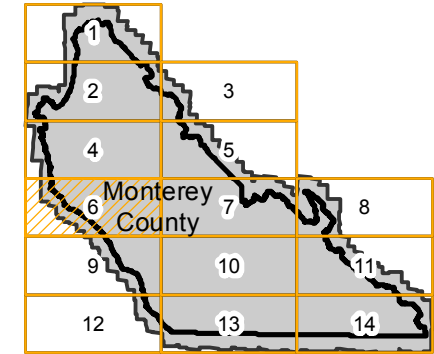
Overlap: 60%

Complete Metadata:

<http://www.library.ucsb.edu/map-imagery-lab/aerial-photography-information>

Note: Monterey County. Areas covered include Watsonville, Salinas, Monterey, Soledad, King City, and Bradley. Coverage extends into surrounding counties.

## FLIGHT LOCATION



Sources: Esri, HERE, DeLorme, Intermap, increment P Corp., GEBCO, USGS, FAO, NPS, NRCAN, GeoBase, IGN, Kadaster NL, Ordnance Survey, Esri Japan, METI, Esri China (Hong Kong), swisstopo, MapmyIndia, © OpenStreetMap contributors, and the GIS User Community

0 3 6 12 Miles

Index to Aerial Photography  
Page 6 of 14

Scale of this index: 1:150,000

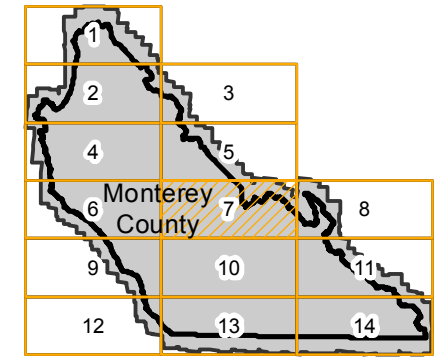


# ABG-1956

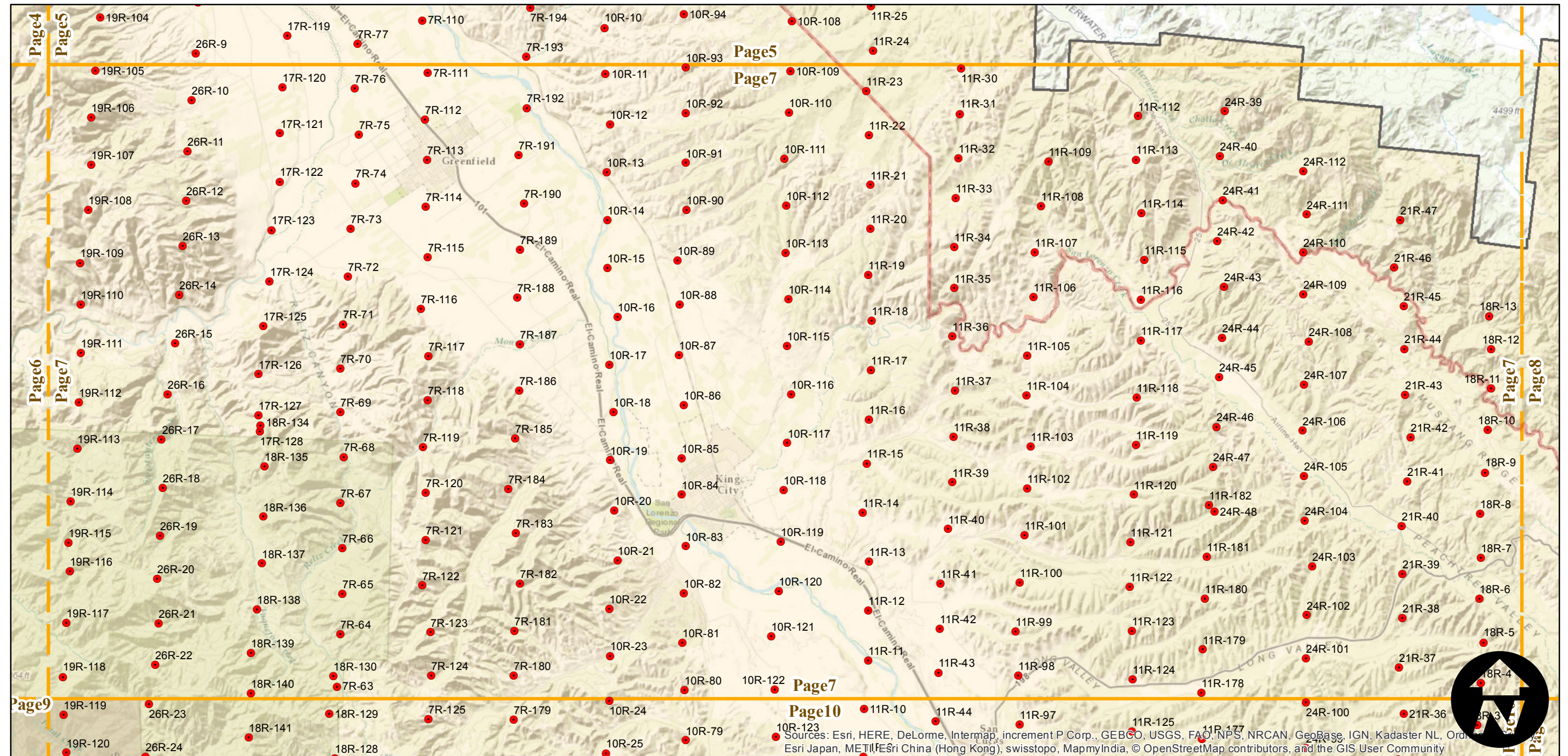
Counties: Monterey, Fresno, San Benito, San Luis Obispo, Santa Cruz  
Flight date(s): 05-01-1956 to 10-26-1956  
Scale: 1:20,000  
Overlap: 60%

Note: Monterey County. Areas covered include Watsonville, Salinas, Monterey, Soledad, King City, and Bradley. Coverage extends into surrounding counties.

## FLIGHT LOCATION



Complete Metadata:  
<http://www.library.ucsb.edu/map-imagery-lab/aerial-photography-information>



0 3 6 12 Miles

Index to Aerial Photography  
Page 7 of 14

Scale of this index: 1:150,000

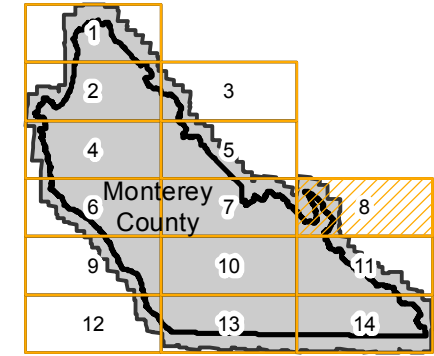


# ABG-1956

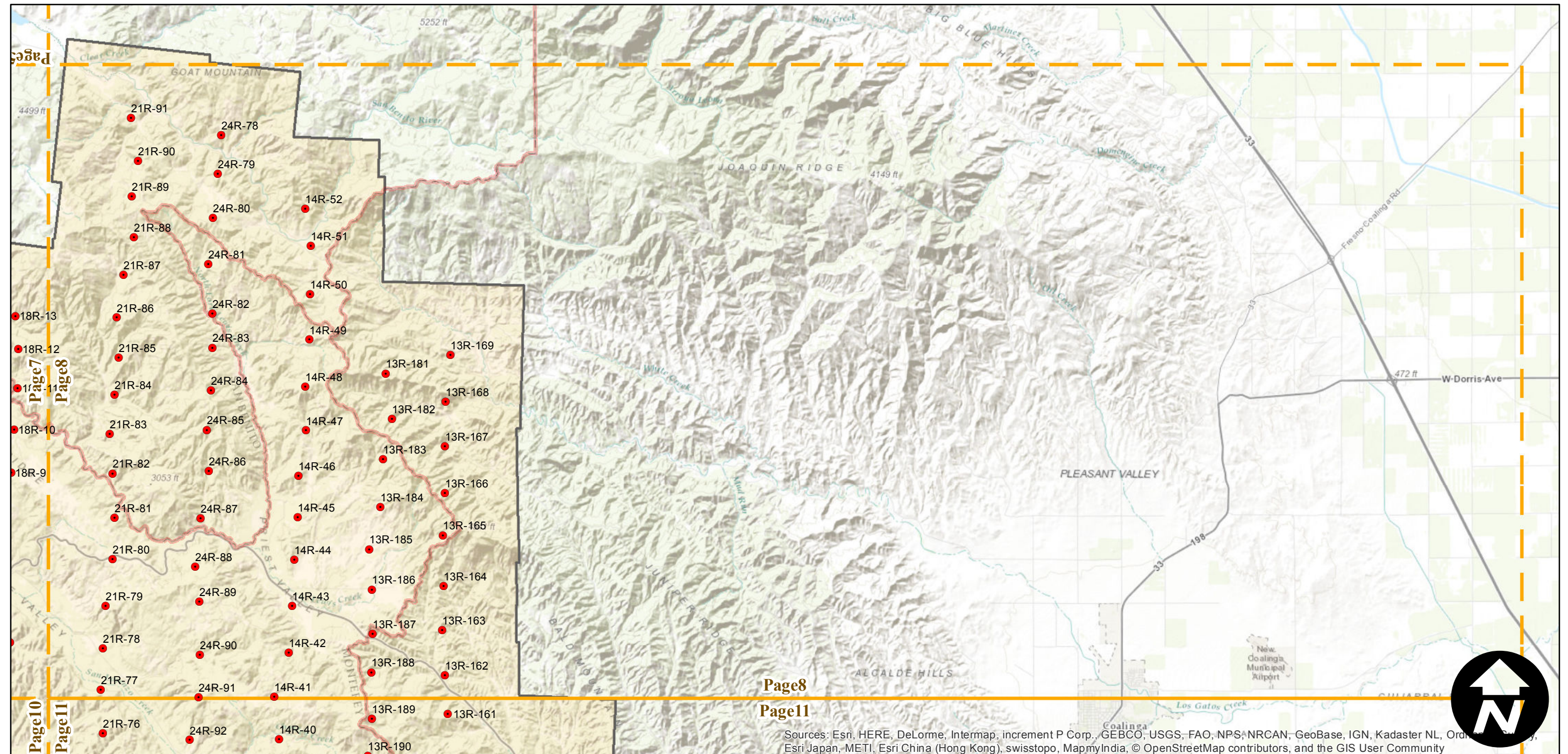
Counties: Monterey, Fresno, San Benito, San Luis Obispo, Santa Cruz  
Flight date(s): 05-01-1956 to 10-26-1956  
Scale: 1:20,000  
Overlap: 60%

Note: Monterey County. Areas covered include Watsonville, Salinas, Monterey, Soledad, King City, and Bradley. Coverage extends into surrounding counties.

## FLIGHT LOCATION



Complete Metadata:  
<http://www.library.ucsb.edu/map-imagery-lab/aerial-photography-information>



0 3 6 12 Miles

Index to Aerial Photography  
Page 8 of 14

Scale of this index: 1:150,000

Page8

Page11

Sources: Esri, HERE, DeLorme, Intermap, increment P Corp., GEBCO, USGS, FAO, NPS, NRCAN, GeoBase, IGN, Kadaster NL, Ordnance Survey, Esri Japan, METI, Esri China (Hong Kong), swisstopo, MapmyIndia, © OpenStreetMap contributors, and the GIS User Community



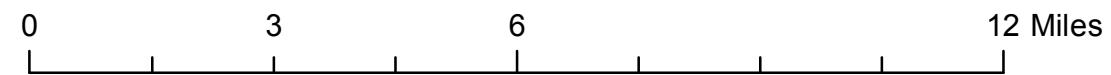
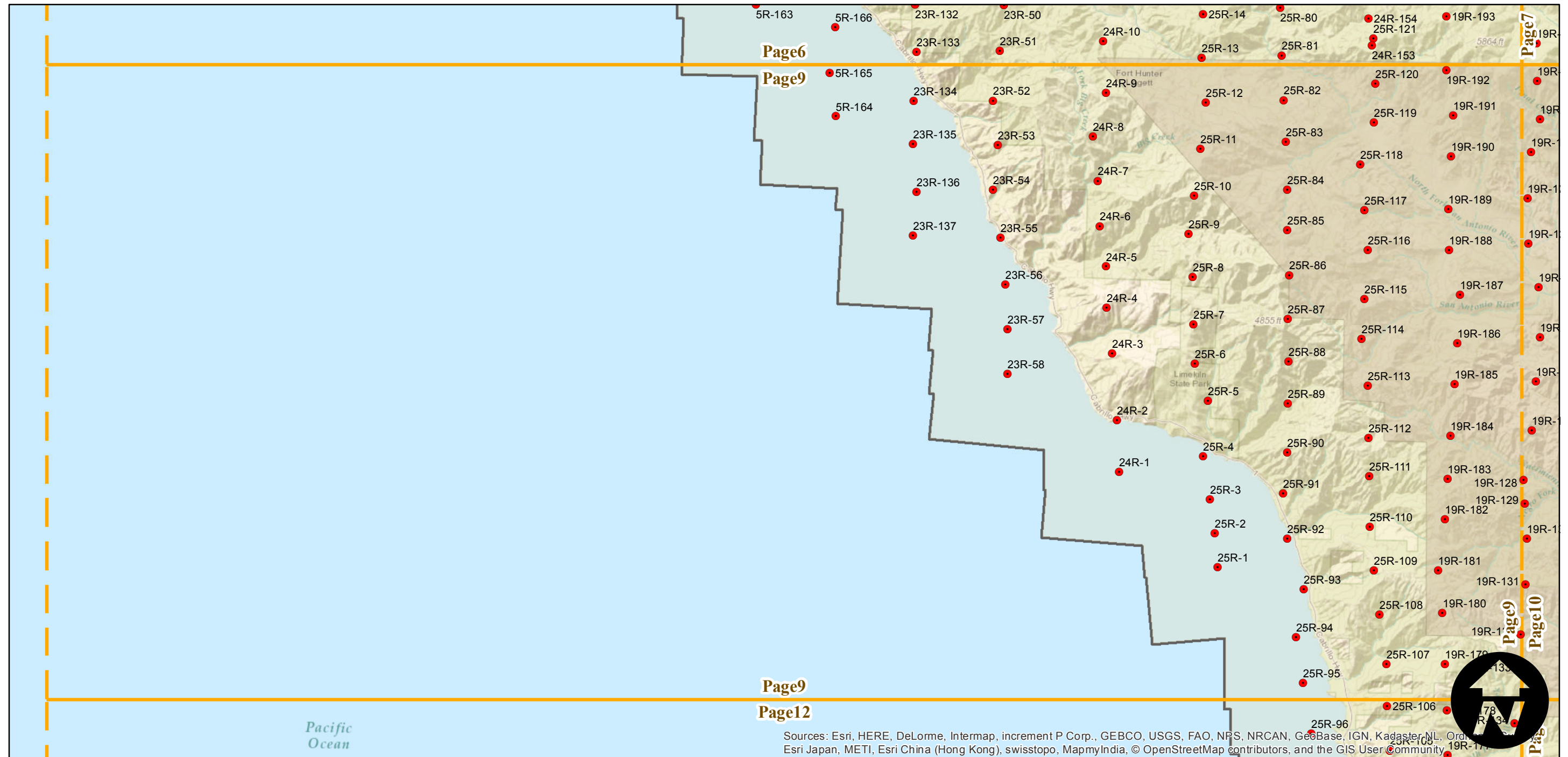
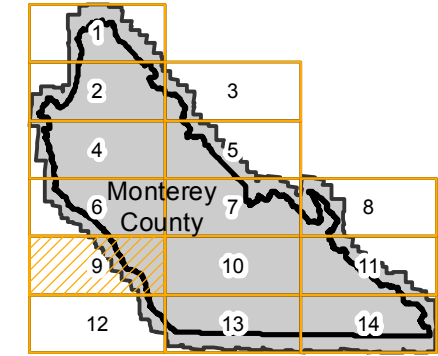
# ABG-1956

Counties: Monterey, Fresno, San Benito, San Luis Obispo, Santa Cruz  
Flight date(s): 05-01-1956 to 10-26-1956  
Scale: 1:20,000  
Overlap: 60%

Note: Monterey County. Areas covered include Watsonville, Salinas, Monterey, Soledad, King City, and Bradley. Coverage extends into surrounding counties.

Complete Metadata:  
<http://www.library.ucsb.edu/map-imagery-lab/aerial-photography-information>

## FLIGHT LOCATION



Index to Aerial Photography  
Page 9 of 14

Scale of this index: 1:150,000

Sources: Esri, HERE, DeLorme, Intermap, increment P Corp., GEBCO, USGS, FAO, NPS, NRCAN, GeoBase, IGN, Kadaster NL, Ordnance Survey, Esri Japan, METI, Esri China (Hong Kong), swisstopo, MapmyIndia, © OpenStreetMap contributors, and the GIS User Community

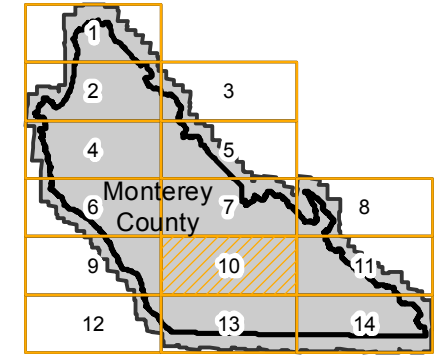


# ABG-1956

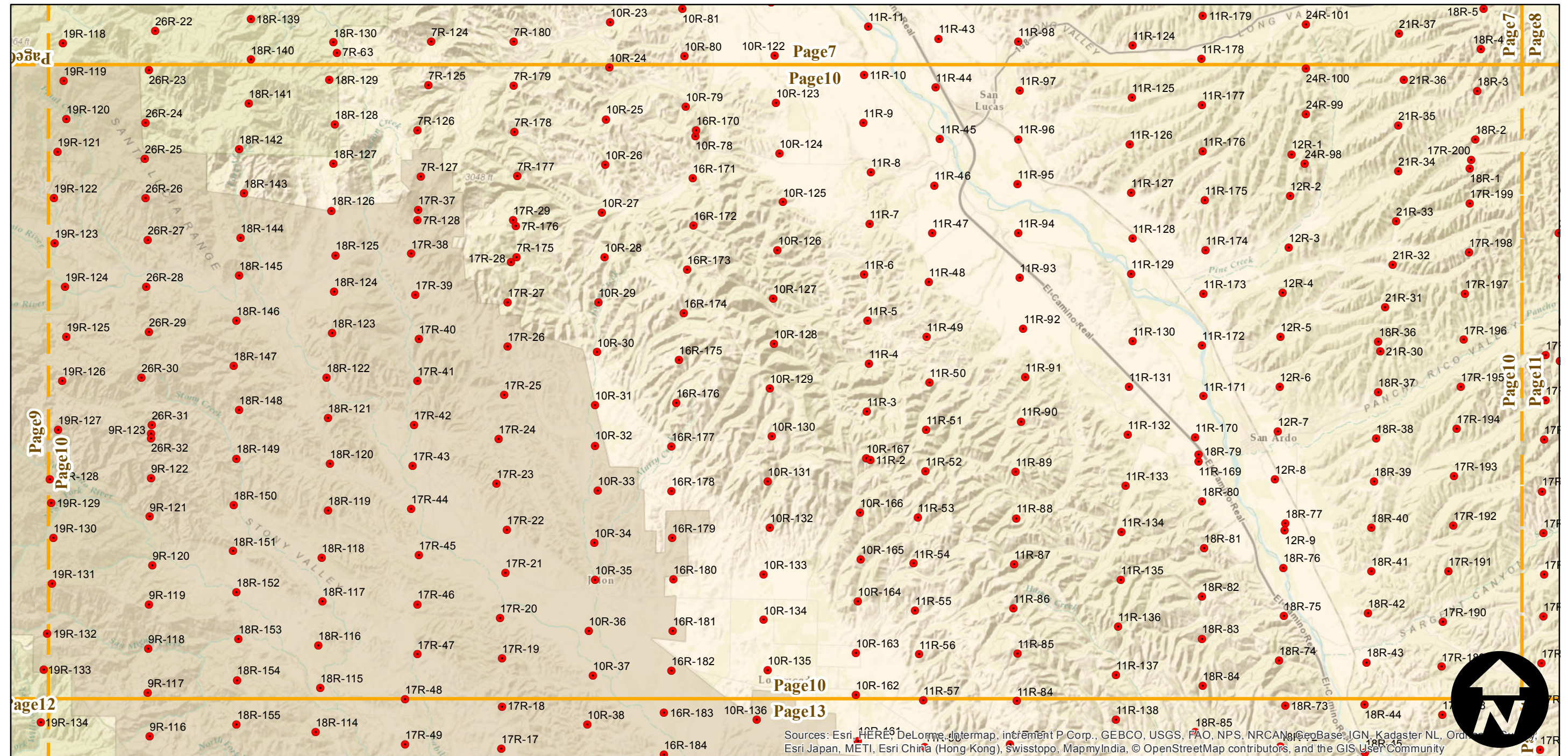
Counties: Monterey, Fresno, San Benito, San Luis Obispo, Santa Cruz  
Flight date(s): 05-01-1956 to 10-26-1956  
Scale: 1:20,000  
Overlap: 60%

Note: Monterey County. Areas covered include Watsonville, Salinas, Monterey, Soledad, King City, and Bradley. Coverage extends into surrounding counties.

## FLIGHT LOCATION



Complete Metadata:  
<http://www.library.ucsb.edu/map-imagery-lab/aerial-photography-information>



Sources: Esri, HERE, DeLorme, Intermap, increment P Corp., GEBCO, USGS, FAO, NPS, NRCAN, GeoBase, IGN, Kadaster NL, Ordnance Survey, Esri Japan, METI, Esri China (Hong Kong), Swisstopo, MapmyIndia, © OpenStreetMap contributors, and the GIS User Community

0 3 6 12 Miles

Index to Aerial Photography  
Page 10 of 14

Scale of this index: 1:150,000

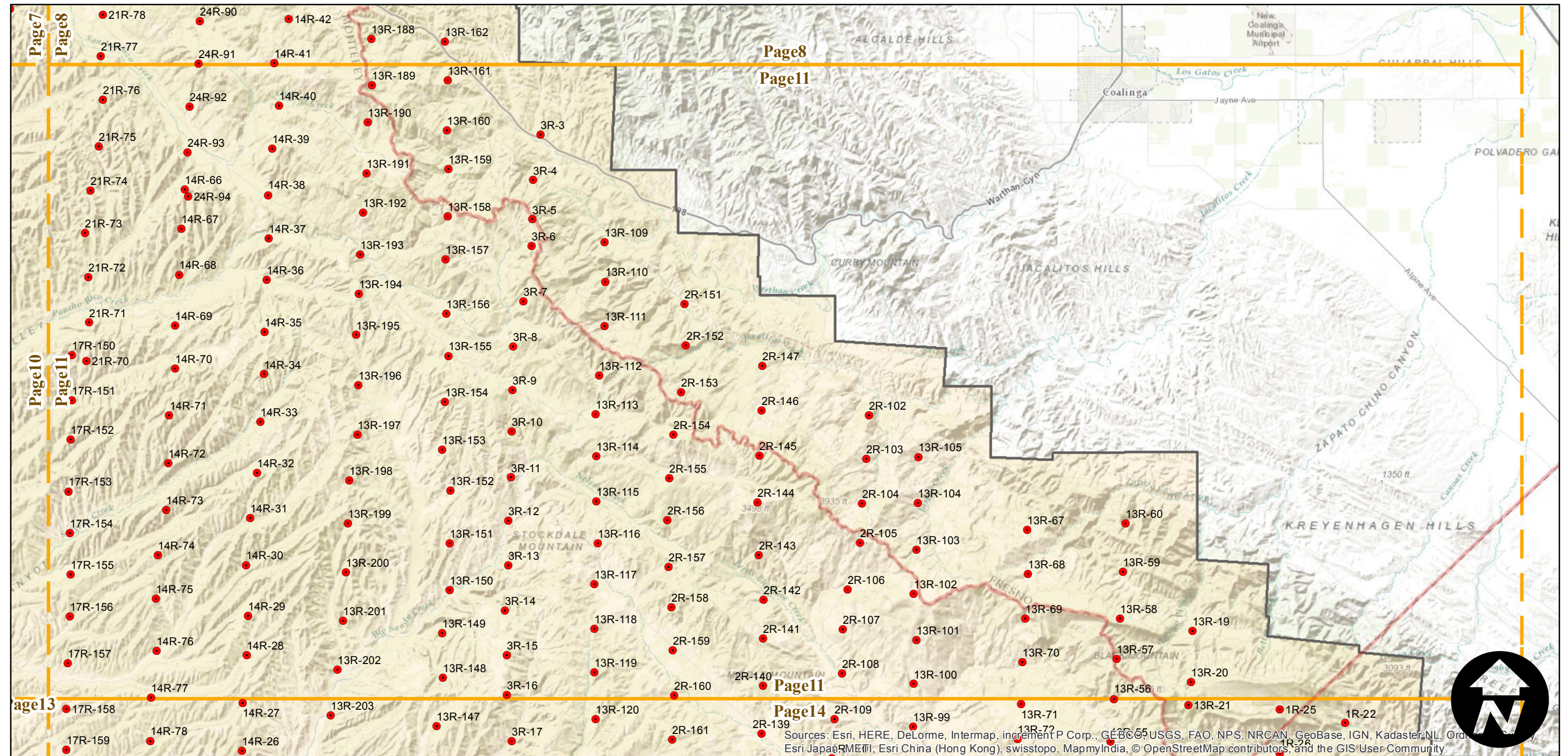
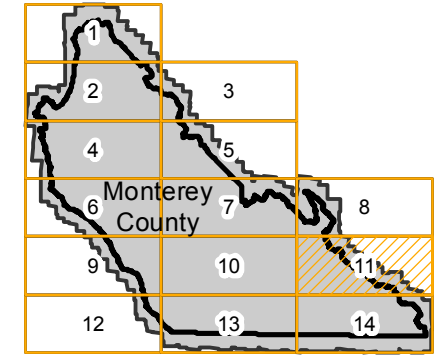


# ABG-1956

Counties: Monterey, Fresno, San Benito, San Luis Obispo, Santa Cruz  
Flight date(s): 05-01-1956 to 10-26-1956  
Scale: 1:20,000  
Overlap: 60%

Note: Monterey County. Areas covered include Watsonville, Salinas, Monterey, Soledad, King City, and Bradley. Coverage extends into surrounding counties.

## FLIGHT LOCATION



0 3 6 12 Miles

Index to Aerial Photography  
Page 11 of 14

Scale of this index: 1:150,000

Sources: Esri, HERE, DeLorme, Intermap, increment P Corp., GEBCO, USGS, FAO, NPS, NRCAN, GeoBase, IGN, Kadaster NL, Ordnance Survey, Esri Japan, METI, Esri China (Hong Kong), swisstopo, MapmyIndia, © OpenStreetMap contributors, and the GIS User Community



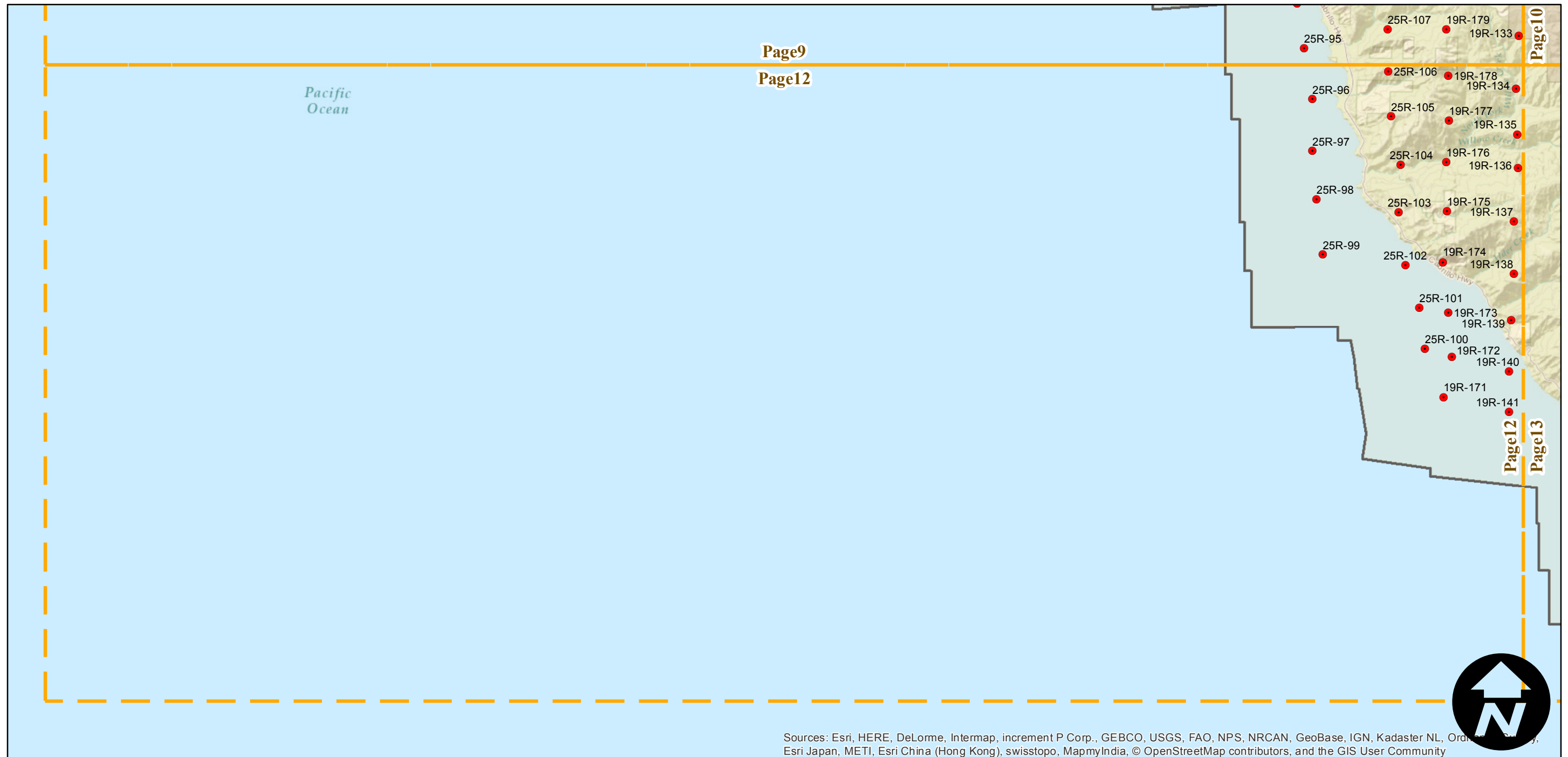
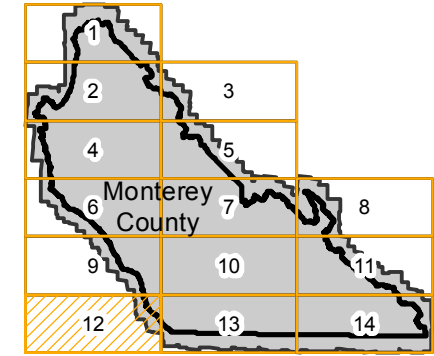
# ABG-1956

Counties: Monterey, Fresno, San Benito, San Luis Obispo, Santa Cruz  
Flight date(s): 05-01-1956 to 10-26-1956  
Scale: 1:20,000  
Overlap: 60%

Note: Monterey County. Areas covered include Watsonville, Salinas, Monterey, Soledad, King City, and Bradley. Coverage extends into surrounding counties.

Complete Metadata:  
<http://www.library.ucsb.edu/map-imagery-lab/aerial-photography-information>

## FLIGHT LOCATION



Sources: Esri, HERE, DeLorme, Intermap, increment P Corp., GEBCO, USGS, FAO, NPS, NRCAN, GeoBase, IGN, Kadaster NL, Ordnance Survey, Esri Japan, METI, Esri China (Hong Kong), swisstopo, MapmyIndia, © OpenStreetMap contributors, and the GIS User Community

0 3 6 12 Miles

Index to Aerial Photography  
Page 12 of 14

Scale of this index: 1:150,000

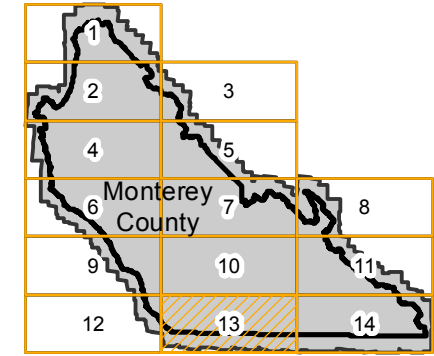


# ABG-1956

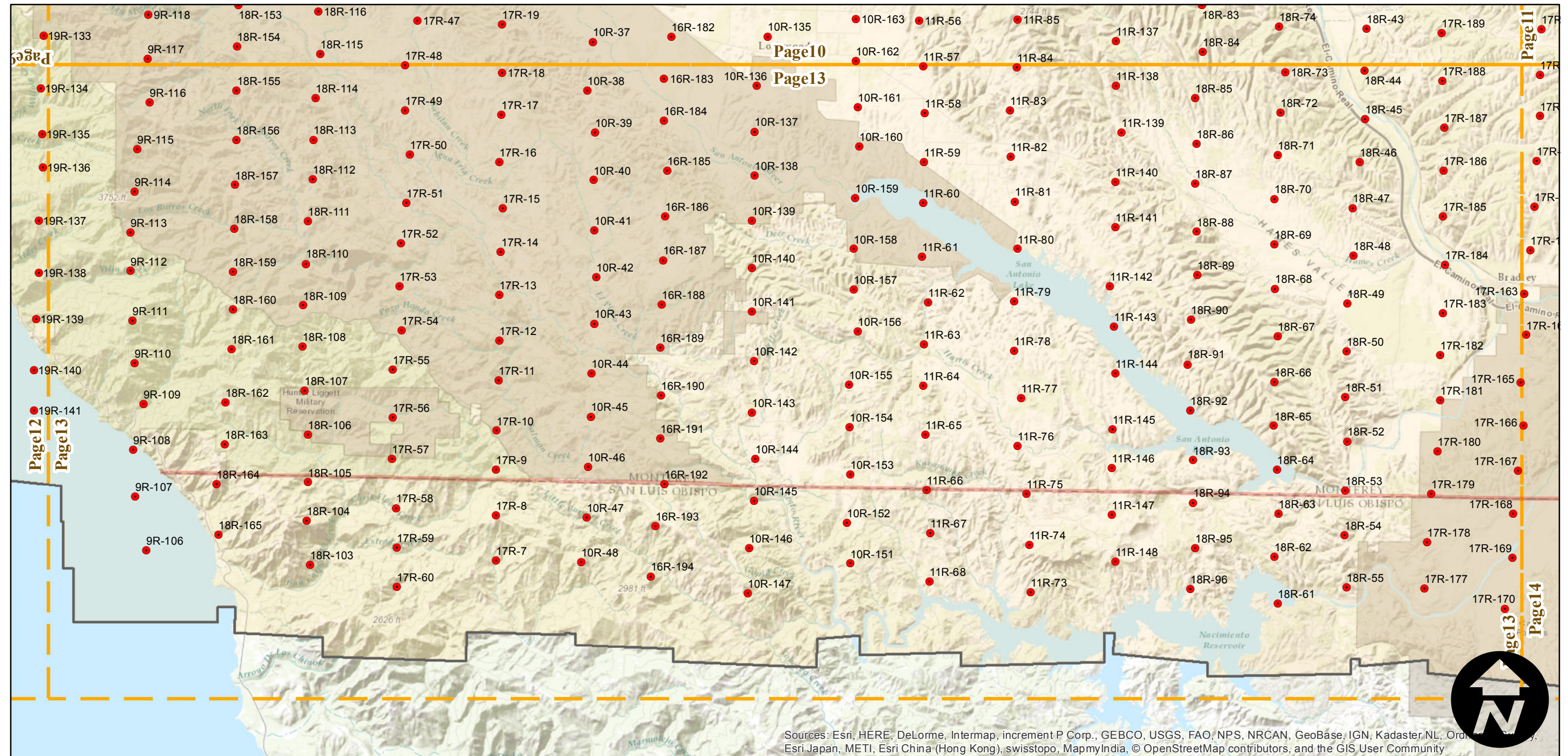
Counties: Monterey, Fresno, San Benito, San Luis Obispo, Santa Cruz  
Flight date(s): 05-01-1956 to 10-26-1956  
Scale: 1:20,000  
Overlap: 60%

Note: Monterey County. Areas covered include Watsonville, Salinas, Monterey, Soledad, King City, and Bradley. Coverage extends into surrounding counties.

## FLIGHT LOCATION



Complete Metadata:  
<http://www.library.ucsb.edu/map-imagery-lab/aerial-photography-information>



Sources: Esri, HERE, DeLorme, Intermap, increment P Corp., GEBCO, USGS, FAO, NPS, NRCAN, GeoBase, IGN, Kadaster NL, Ordnance Survey, Esri Japan, METI, Esri China (Hong Kong), swisstopo, MapmyIndia, © OpenStreetMap contributors, and the GIS User Community

0 3 6 12 Miles

Index to Aerial Photography  
Page 13 of 14

Scale of this index: 1:150,000

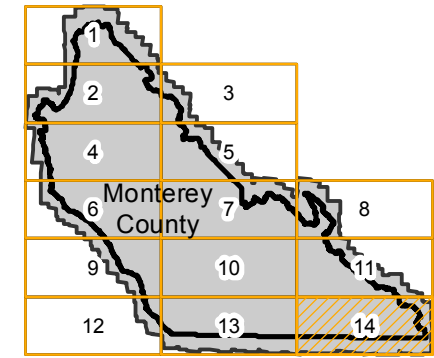


# ABG-1956

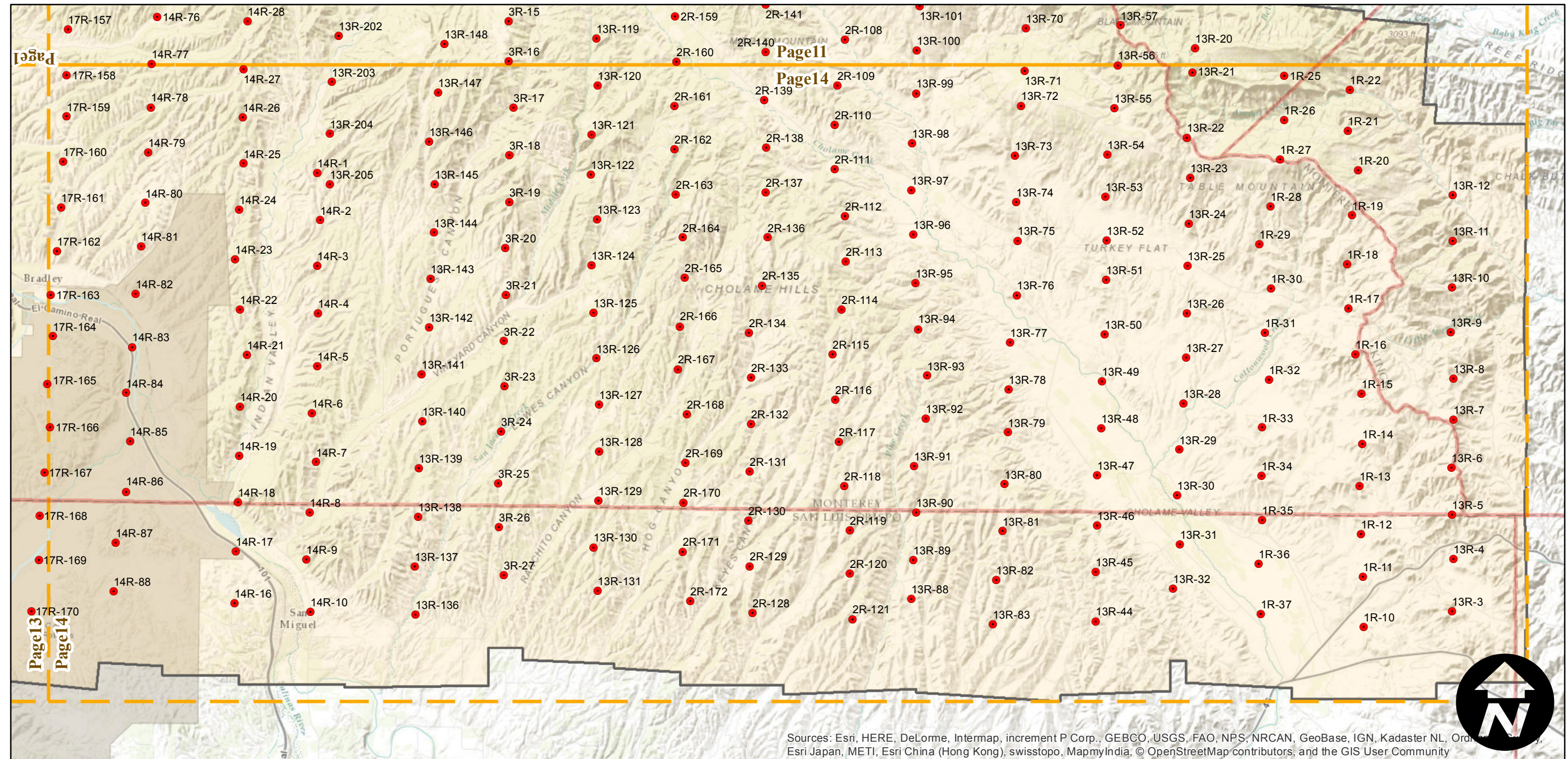
Counties: Monterey, Fresno, San Benito, San Luis Obispo, Santa Cruz  
Flight date(s): 05-01-1956 to 10-26-1956  
Scale: 1:20,000  
Overlap: 60%

Note: Monterey County. Areas covered include Watsonville, Salinas, Monterey, Soledad, King City, and Bradley. Coverage extends into surrounding counties.

## FLIGHT LOCATION



Complete Metadata:  
<http://www.library.ucsb.edu/map-imagery-lab/aerial-photography-information>



Sources: Esri, HERE, DeLorme, Intermap, increment P Corp., GEBCO, USGS, FAO, NPS, NRCAN, GeoBase, IGN, Kadaster NL, Ordnance Survey, Esri Japan, METI, Esri China (Hong Kong), swisstopo, MapmyIndia, © OpenStreetMap contributors, and the GIS User Community

0 3 6 12 Miles

Index to Aerial Photography  
Page 14 of 14

Scale of this index: 1:150,000