

# ABD-1940

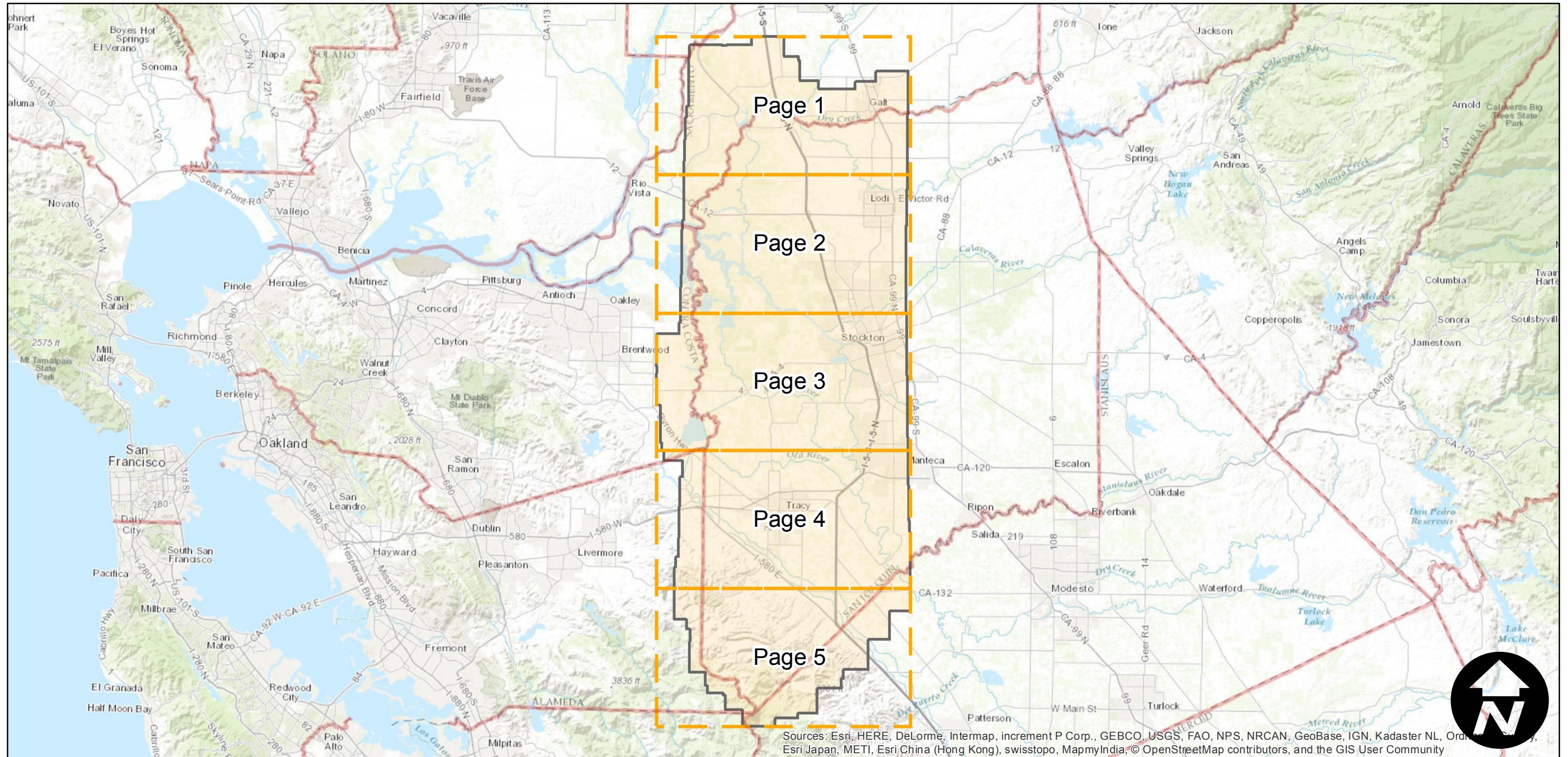
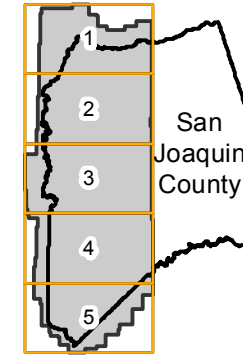
Counties: San Joaquin, Sacramento, Contra Costa, Stanislaus  
Flight date(s): 05-26-1940 to 6-18-1940  
Scale: 1:20,000  
Overlap: 60%

Complete Metadata:  
<http://www.library.ucsb.edu/mil/aerial-photography-information>

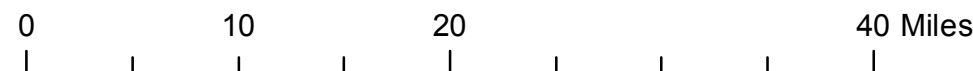
Note: Western portion of San Joaquin county. Areas covered include Thornton, Lodi, Stockton, and Tracy. Coverage extends into surrounding counties. Some imagery from C-6500 incorporated into this flight. Imagery acquired from Teledyne Inc., UC Berkeley, and Whittier College.

- MIL owns frame
- MIL does not own frame

## FLIGHT LOCATION



Sources: Esri, HERE, DeLorme, Intermap, increment P Corp., GEBCO, USGS, FAO, NPS, NRCAN, GeoBase, IGN, Kadaster NL, Ordnance Survey, Esri Japan, METI, Esri China (Hong Kong), swisstopo, MapmyIndia, © OpenStreetMap contributors, and the GIS User Community



Index to Aerial Photography  
Page Key

Scale of this index: 1:575,000





# ABD-1940

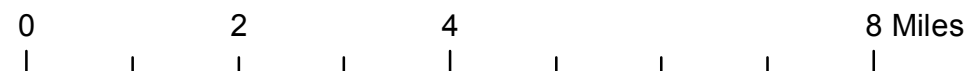
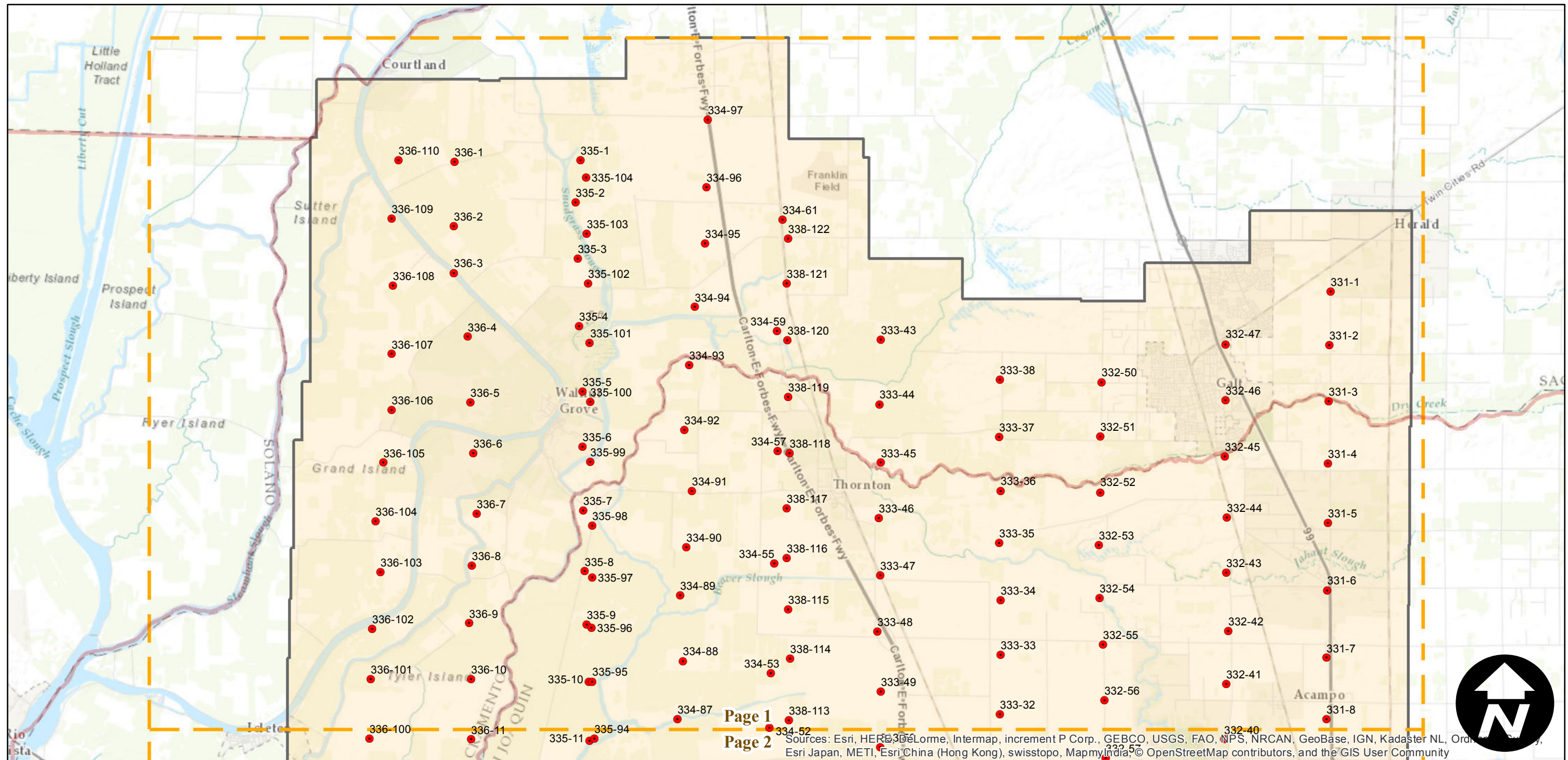
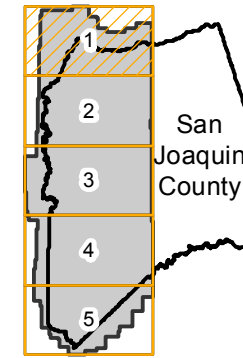
Counties: San Joaquin, Sacramento, Contra Costa, Stanislaus  
Flight date(s): 05-26-1940 to 6-18-1940  
Scale: 1:20,000  
Overlap: 60%

Complete Metadata:  
<http://www.library.ucsb.edu/mil/aerial-photography-information>

Note: Western portion of San Joaquin county. Areas covered include Thornton, Lodi, Stockton, and Tracy. Coverage extends into surrounding counties. Some imagery from C-6500 incorporated into this flight. Imagery acquired from Teledyne Inc., UC Berkeley, and Whittier College.

- MIL owns frame
- MIL does not own frame

## FLIGHT LOCATION



Sources: Esri, HERE, DeLorme, Intermap, increment P Corp., GEBCO, USGS, FAO, NPS, NRCAN, GeoBase, IGN, Kadaster NL, Ordnance Survey, Esri Japan, METI, Esri China (Hong Kong), swisstopo, MapmyIndia, © OpenStreetMap contributors, and the GIS User Community



# ABD-1940

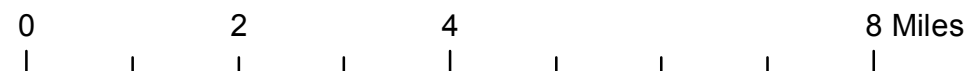
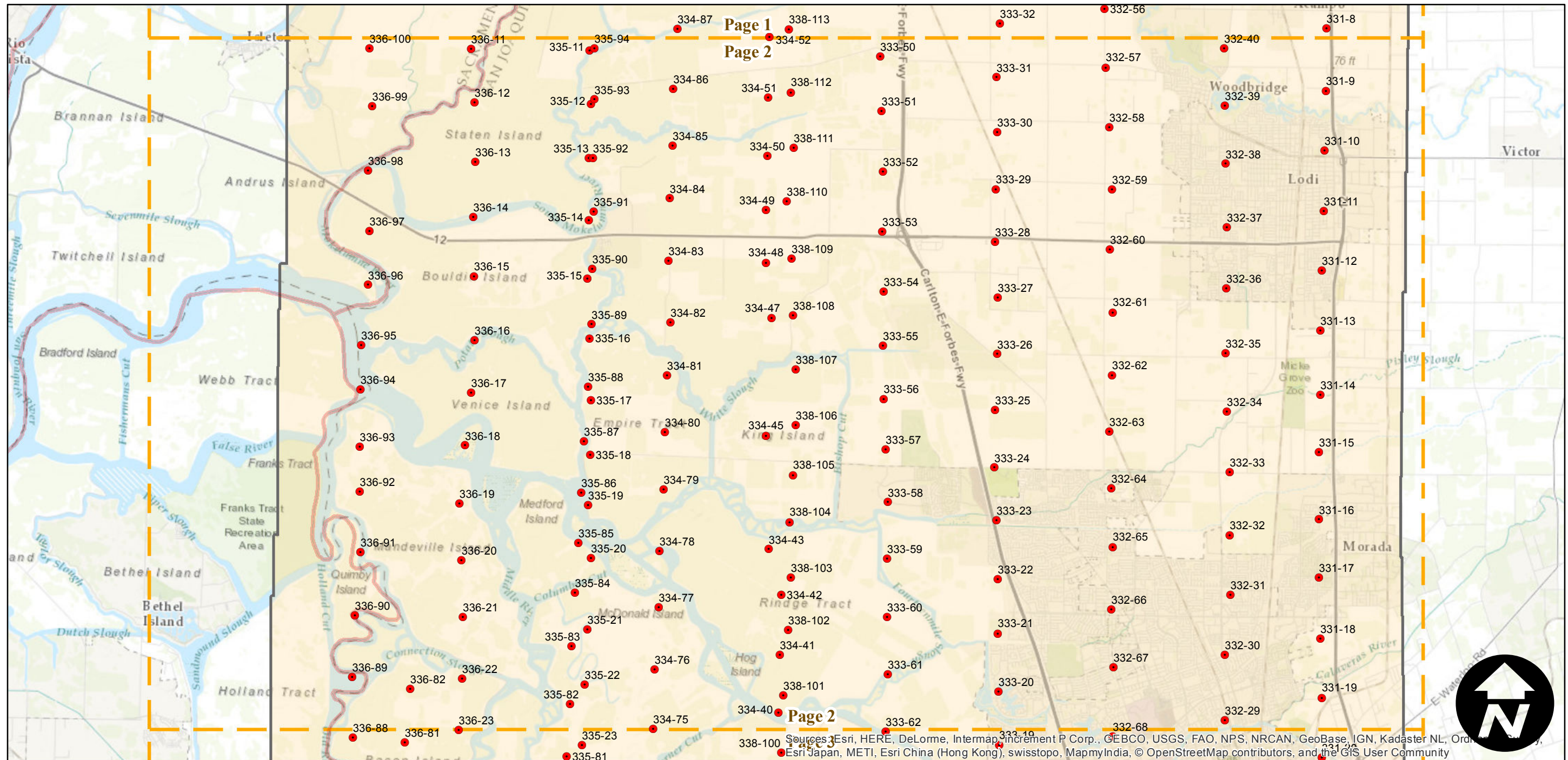
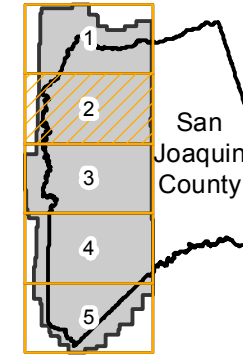
Counties: San Joaquin, Sacramento, Contra Costa, Stanislaus  
 Flight date(s): 05-26-1940 to 6-18-1940  
 Scale: 1:20,000  
 Overlap: 60%

Complete Metadata:  
<http://www.library.ucsb.edu/mil/aerial-photography-information>

Note: Western portion of San Joaquin county. Areas covered include Thornton, Lodi, Stockton, and Tracy. Coverage extends into surrounding counties. Some imagery from C-6500 incorporated into this flight. Imagery acquired from Teledyne Inc., UC Berkeley, and Whittier College.

- MIL owns frame
- MIL does not own frame

## FLIGHT LOCATION



Sources: Esri, HERE, DeLorme, Intermap, increment P Corp., GEBCO, USGS, FAO, NPS, NRCAN, GeoBase, IGN, Kadaster NL, Ordnance Survey, Esri Japan, METI, Esri China (Hong Kong), swisstopo, MapmyIndia, © OpenStreetMap contributors, and the GIS User Community



# ABD-1940

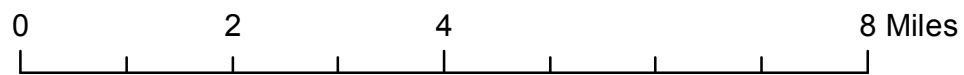
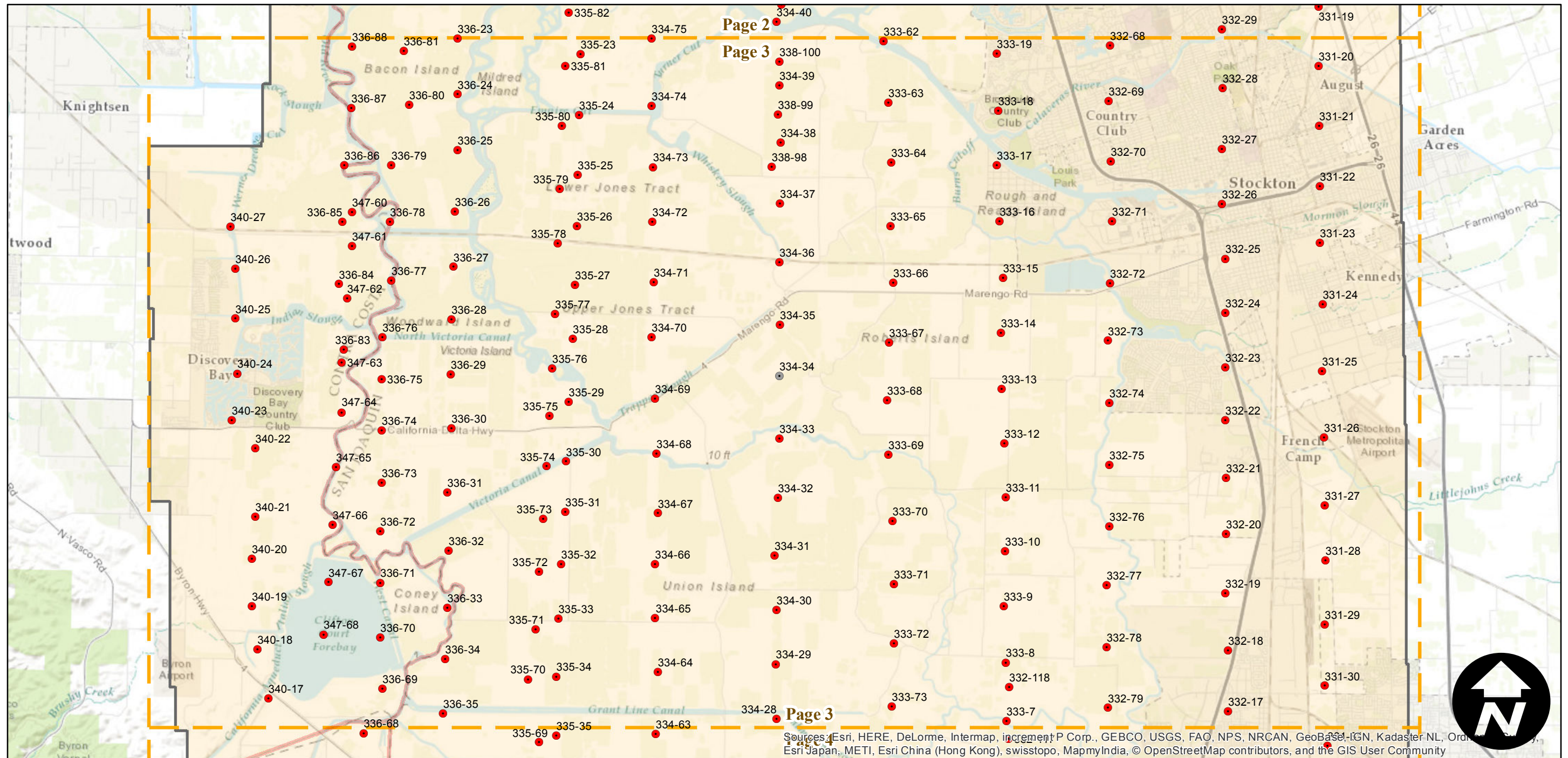
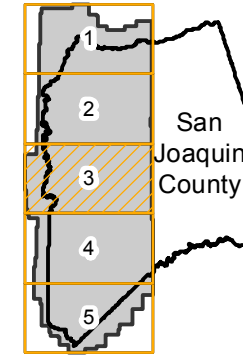
Counties: San Joaquin, Sacramento, Contra Costa, Stanislaus  
 Flight date(s): 05-26-1940 to 6-18-1940  
 Scale: 1:20,000  
 Overlap: 60%

Complete Metadata:  
<http://www.library.ucsb.edu/mil/aerial-photography-information>

Note: Western portion of San Joaquin county. Areas covered include Thornton, Lodi, Stockton, and Tracy. Coverage extends into surrounding counties. Some imagery from C-6500 incorporated into this flight. Imagery acquired from Teledyne Inc., UC Berkeley, and Whittier College.

- MIL owns frame
- MIL does not own frame

## FLIGHT LOCATION



Sources: Esri, HERE, DeLorme, Intermap, increment P Corp., GEBCO, USGS, FAO, NPS, NRCAN, Geobase, IGN, Kadaster NL, Ordnance Survey, Esri Japan, METI, Esri China (Hong Kong), swisstopo, MapmyIndia, © OpenStreetMap contributors, and the GIS User Community



# ABD-1940

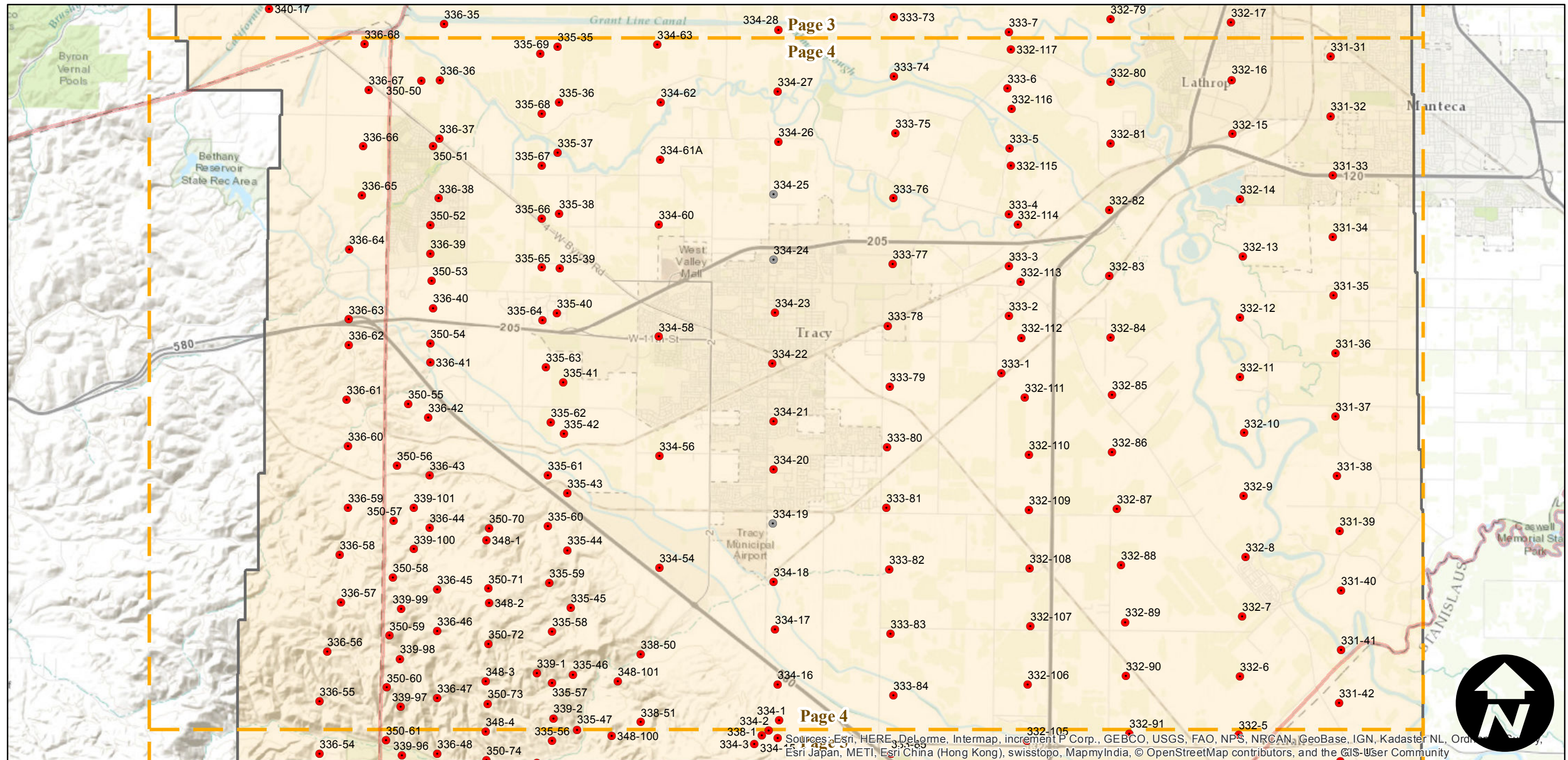
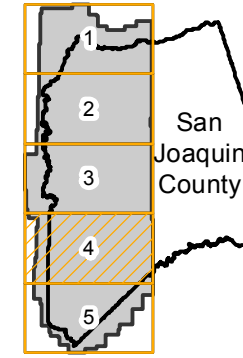
Counties: San Joaquin, Sacramento, Contra Costa, Stanislaus  
 Flight date(s): 05-26-1940 to 6-18-1940  
 Scale: 1:20,000  
 Overlap: 60%

Complete Metadata:  
<http://www.library.ucsb.edu/mil/aerial-photography-information>

Note: Western portion of San Joaquin county. Areas covered include Thornton, Lodi, Stockton, and Tracy. Coverage extends into surrounding counties. Some imagery from C-6500 incorporated into this flight. Imagery acquired from Teledyne Inc., UC Berkeley, and Whittier College.

- MIL owns frame
- MIL does not own frame

## FLIGHT LOCATION



0 2 4 8 Miles

Index to Aerial Photography  
 Page 4 of 5

Scale of this index: 1:115,000

Sources: Esri, HERE, DeLorme, Intermap, increment P Corp., GEBCO, USGS, FAO, NPS, NRCAN, GeoBase, IGN, Kadaster NL, Ordnance Survey, Esri Japan, METI, Esri China (Hong Kong), swisstopo, MapmyIndia, © OpenStreetMap contributors, and the GIS User Community



# ABD-1940

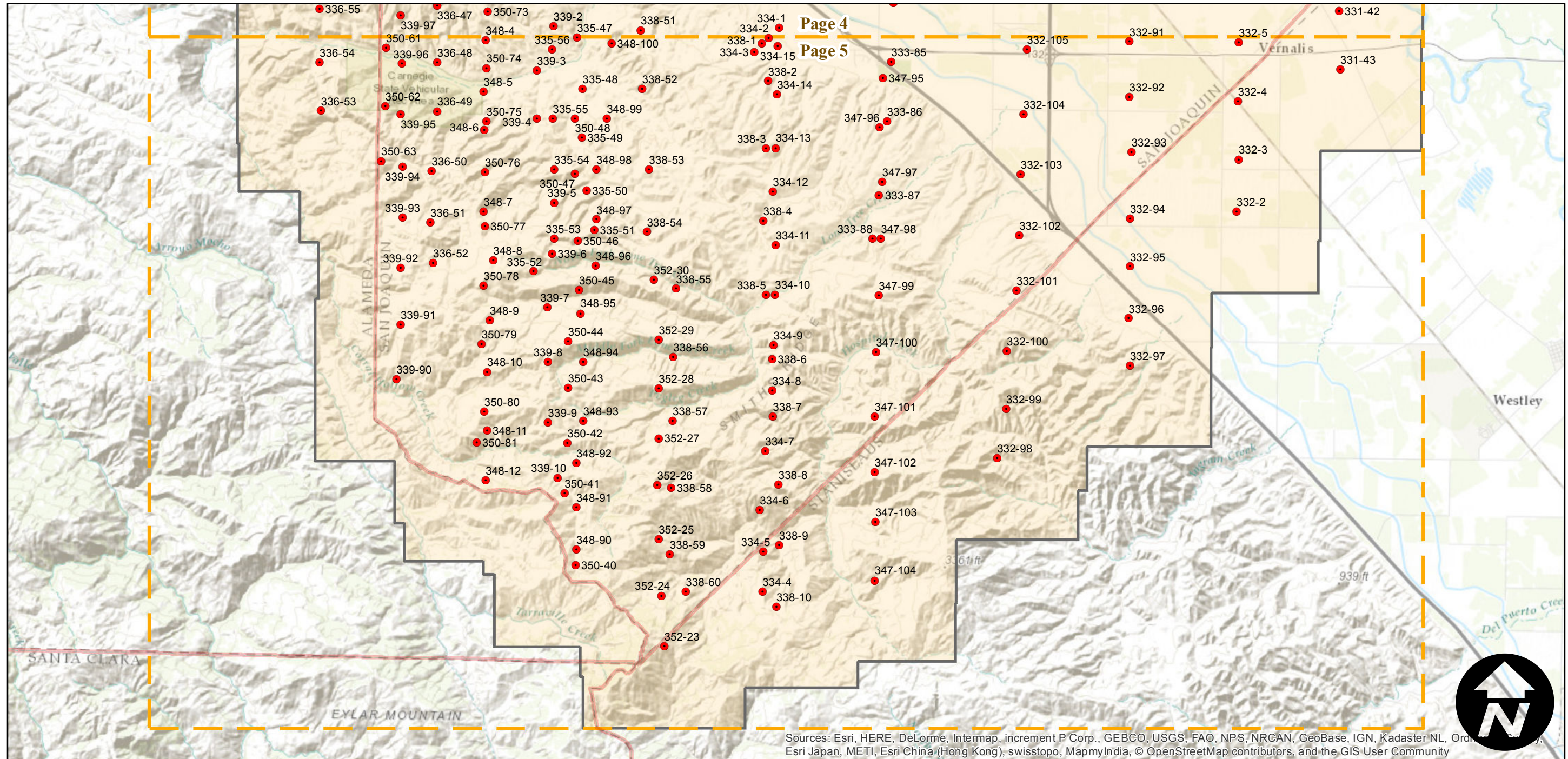
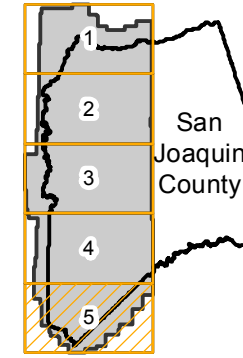
Counties: San Joaquin, Sacramento, Contra Costa, Stanislaus  
Flight date(s): 05-26-1940 to 6-18-1940  
Scale: 1:20,000  
Overlap: 60%

Complete Metadata:  
<http://www.library.ucsb.edu/mil/aerial-photography-information>

Note: Western portion of San Joaquin county. Areas covered include Thornton, Lodi, Stockton, and Tracy. Coverage extends into surrounding counties. Some imagery from C-6500 incorporated into this flight. Imagery acquired from Teledyne Inc., UC Berkeley, and Whittier College.

- MIL owns frame
- MIL does not own frame

## FLIGHT LOCATION



Sources: Esri, HERE, DeLorme, Intermap, increment P Corp., GEBCO, USGS, FAO, NPS, NRCAN, GeoBase, IGN, Kadaster NL, Ordnance Survey, Esri Japan, METI, Esri China (Hong Kong), swisstopo, MapmyIndia, © OpenStreetMap contributors, and the GIS User Community

0 2 4 8 Miles

Index to Aerial Photography  
Page 5 of 5

Scale of this index: 1:115,000