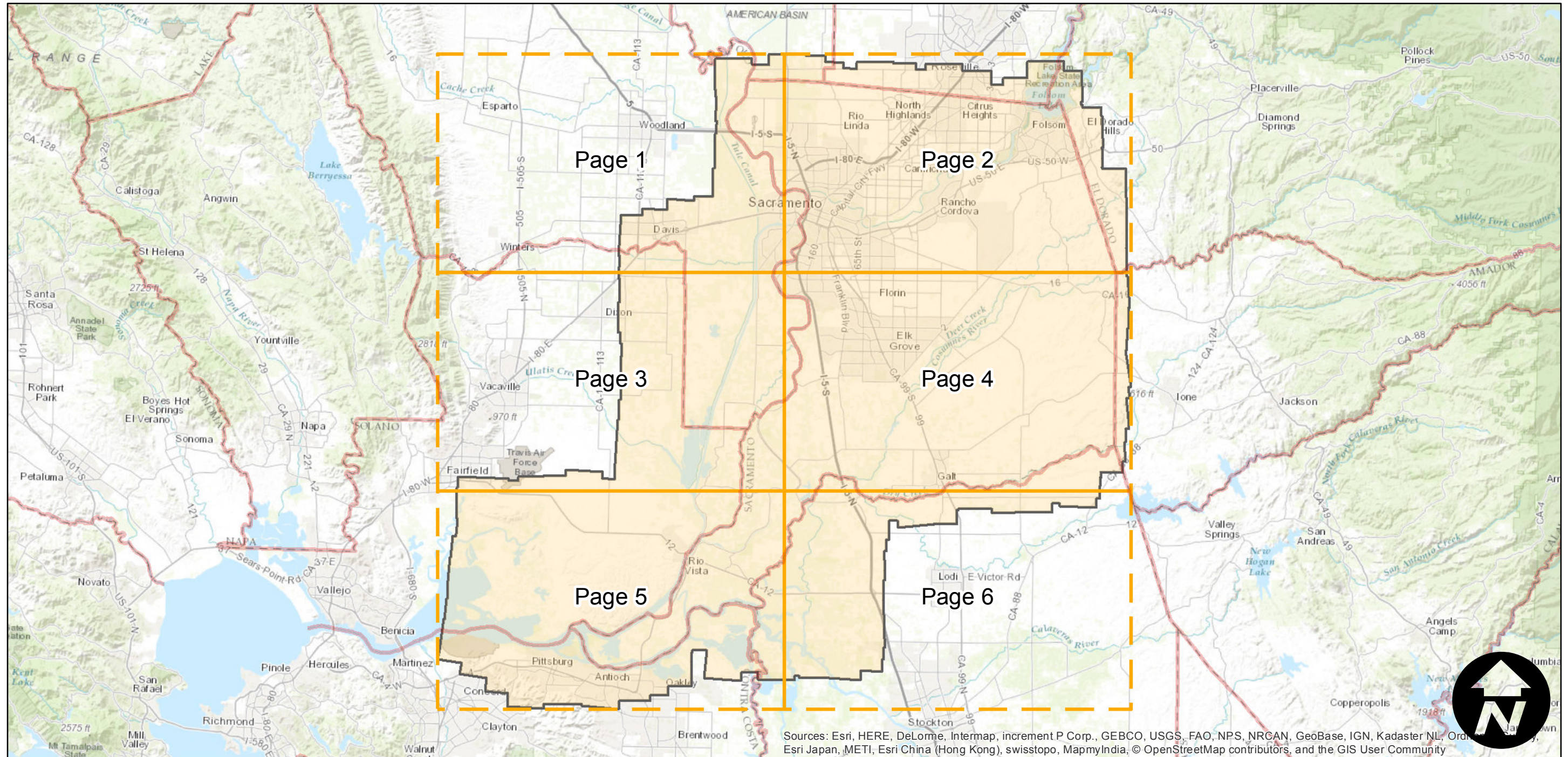
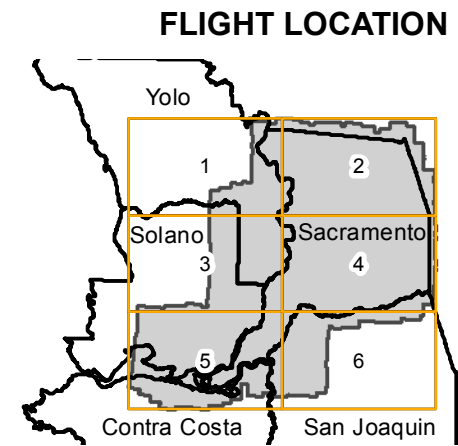


# ABC-1937

Counties: Sacramento, Contra Costa  
Flight date(s): 08-16-1937 to 10-6-1937  
Scale: 1:20,000  
Overlap: 60%

Note: Sacramento County. Some photographs held only in digital format. Digital imagery was borrowed from UC Berkeley and from UC Davis (July 2009).

Complete Metadata:  
<http://www.library.ucsb.edu/map-imagery-lab/aerial-photography-information>



Index to Aerial Photography  
Page Key

Scale of this index: 1:550,000



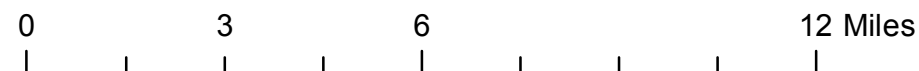
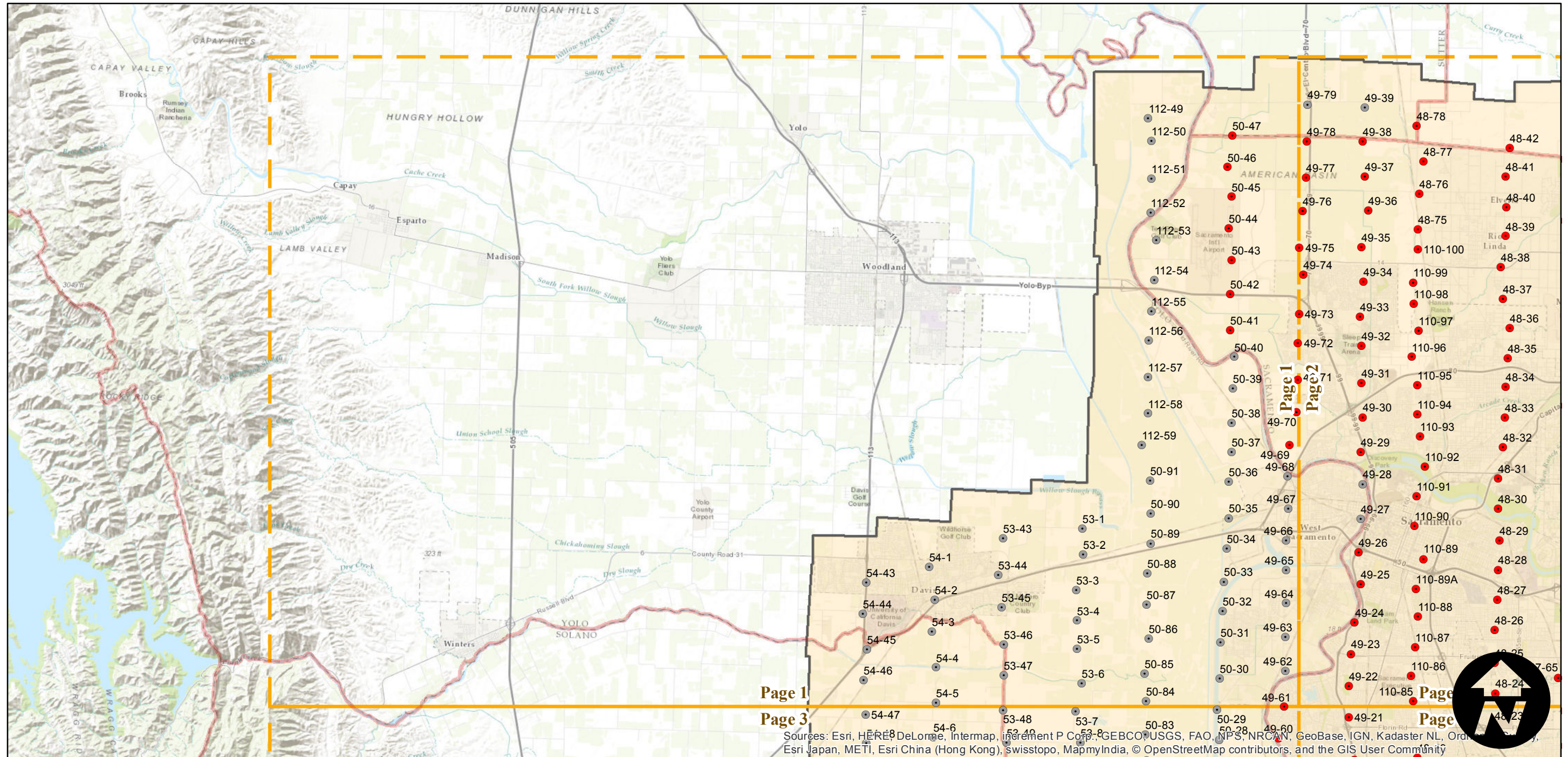
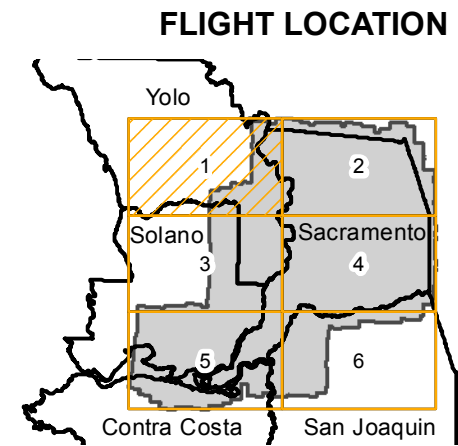
# ABC-1937

Counties: Sacramento, Contra Costa  
 Flight date(s): 08-16-1937 to 10-6-1937  
 Scale: 1:20,000  
 Overlap: 60%

Complete Metadata:  
<http://www.library.ucsb.edu/map-imagery-lab/aerial-photography-information>

Note: Sacramento County. Some photographs held only in digital format. Digital imagery was borrowed from UC Berkeley and from UC Davis (July 2009).

- MIL owns frame
- MIL does not own frame



Sources: Esri, HERE, DeLorme, Intermap, increment P Corp., GEBCO, USGS, FAO, NPS, NRCAN, GeoBase, IGN, Kadaster NL, Ordnance Survey, Esri Japan, METI, Esri China (Hong Kong), Swisstopo, MapmyIndia, © OpenStreetMap contributors, and the GIS User Community



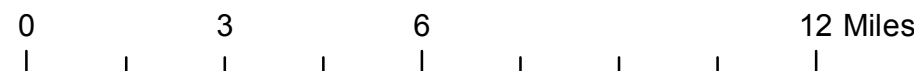
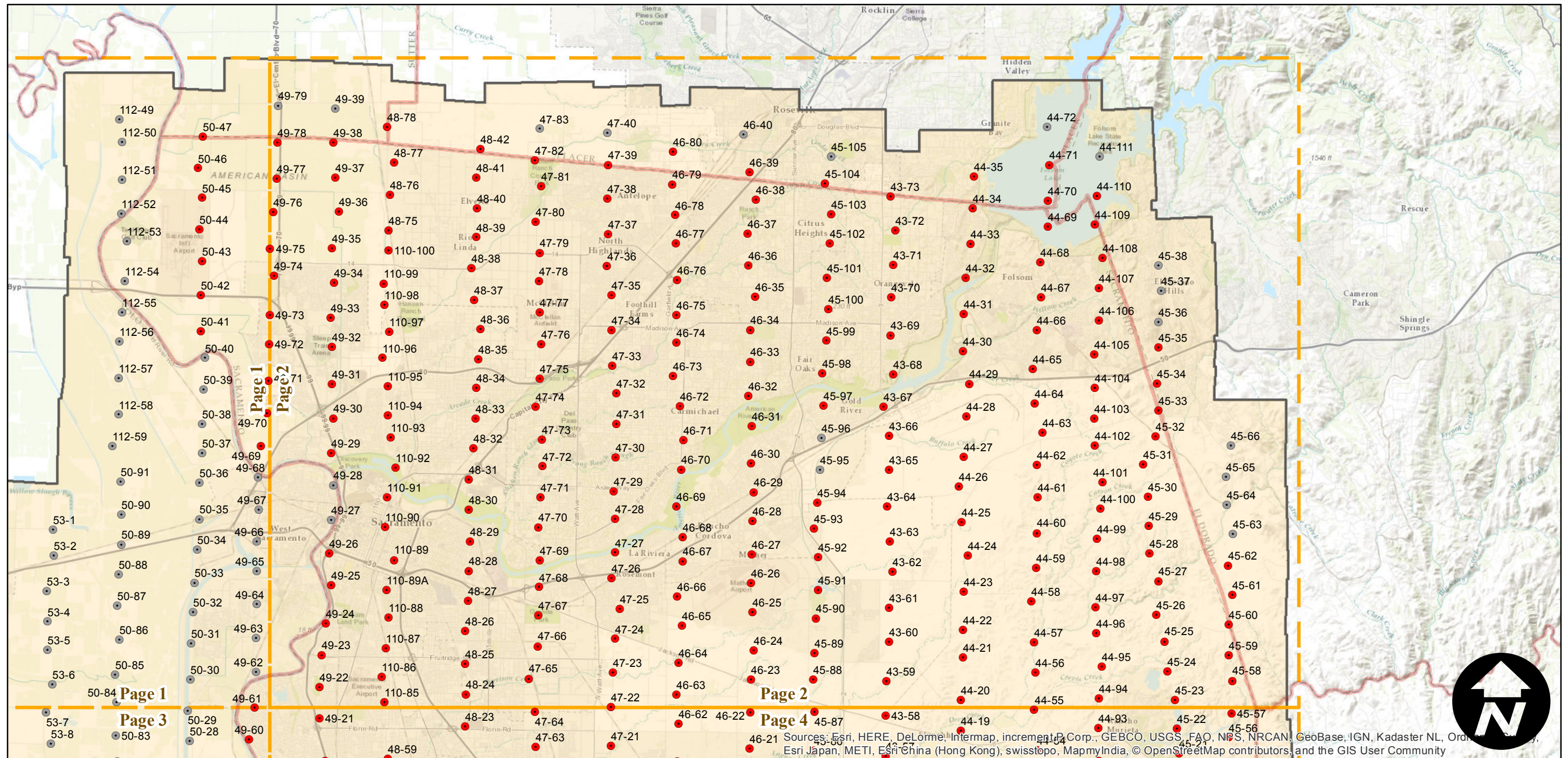
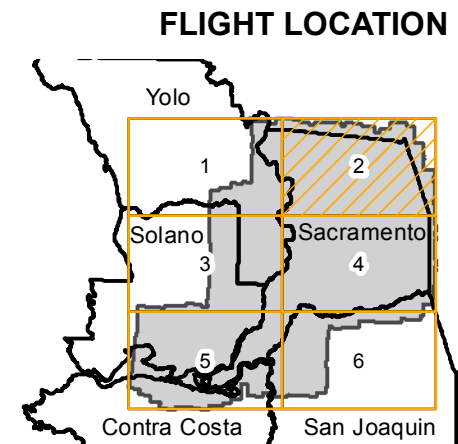
# ABC-1937

Counties: Sacramento, Contra Costa  
Flight date(s): 08-16-1937 to 10-6-1937  
Scale: 1:20,000  
Overlap: 60%

Complete Metadata:  
<http://www.library.ucsb.edu/map-imagery-lab/aerial-photography-information>

Note: Sacramento County. Some photographs held only in digital format. Digital imagery was borrowed from UC Berkeley and from UC Davis (July 2009).

- MIL owns frame
- MIL does not own frame



Sources: Esri, HERE, DeLorme, Intermap, increment P Corp., GEBCO, USGS, FAO, NPS, NRCAN, GeoBase, IGN, Kadaster NL, Ordnance Survey, Esri Japan, METI, Esri China (Hong Kong), swisstopo, MapmyIndia, © OpenStreetMap contributors, and the GIS User Community



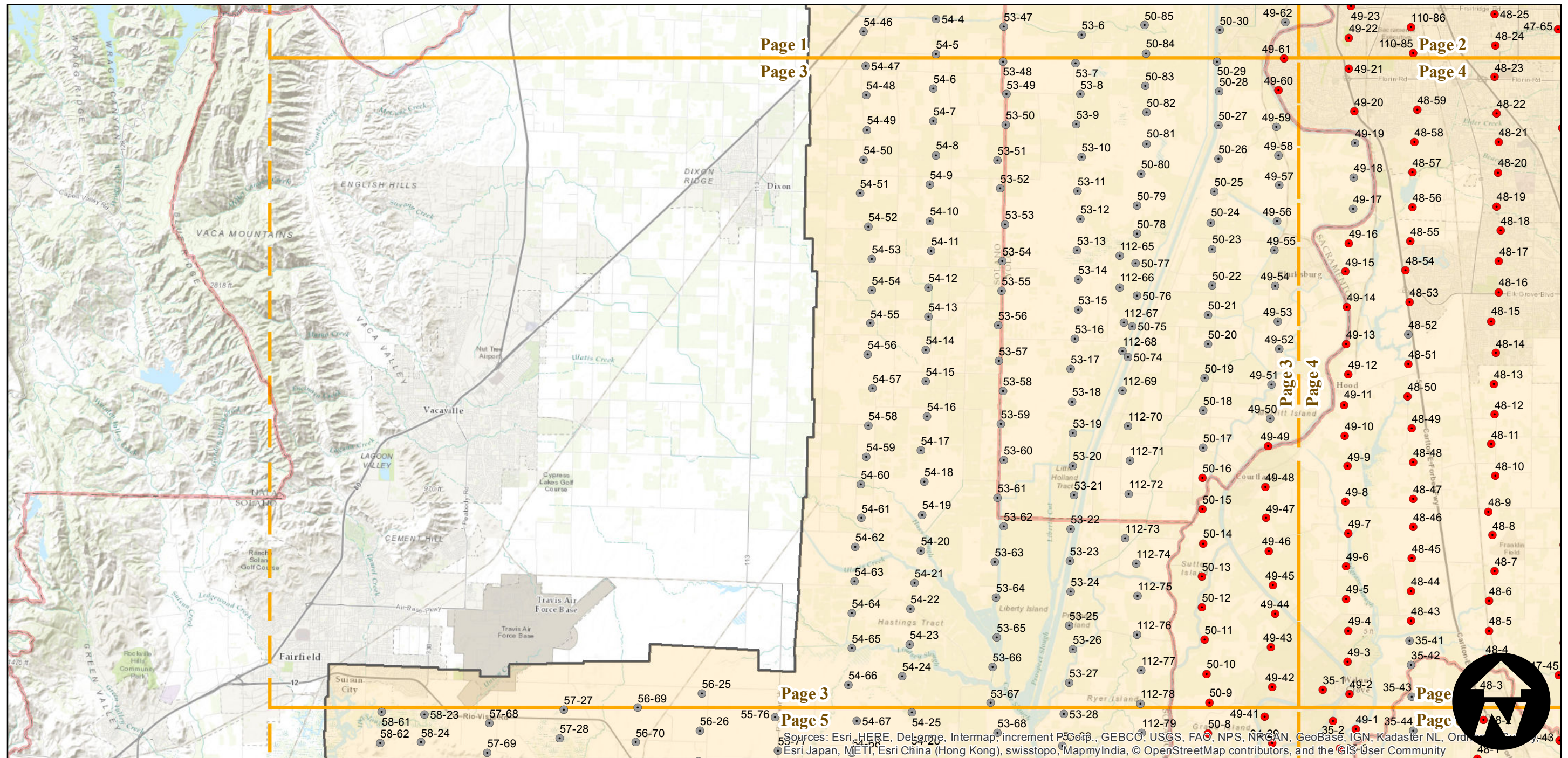
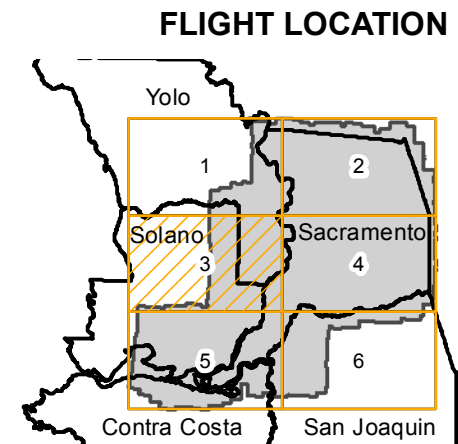
# ABC-1937

Counties: Sacramento, Contra Costa  
 Flight date(s): 08-16-1937 to 10-6-1937  
 Scale: 1:20,000  
 Overlap: 60%

Complete Metadata:  
<http://www.library.ucsb.edu/map-imagery-lab/aerial-photography-information>

Note: Sacramento County. Some photographs held only in digital format. Digital imagery was borrowed from UC Berkeley and from UC Davis (July 2009).

- MIL owns frame
- MIL does not own frame



Sources: Esri, HERE, DeLorme, Intermap, increment P Corp., GEBCO, USGS, FAO, NPS, NRCAN, Geobase, IGN, Kadaster NL, Ordnance Survey, Esri Japan, METI, Esri China (Hong Kong), swisstopo, MapmyIndia, © OpenStreetMap contributors, and the GIS User Community



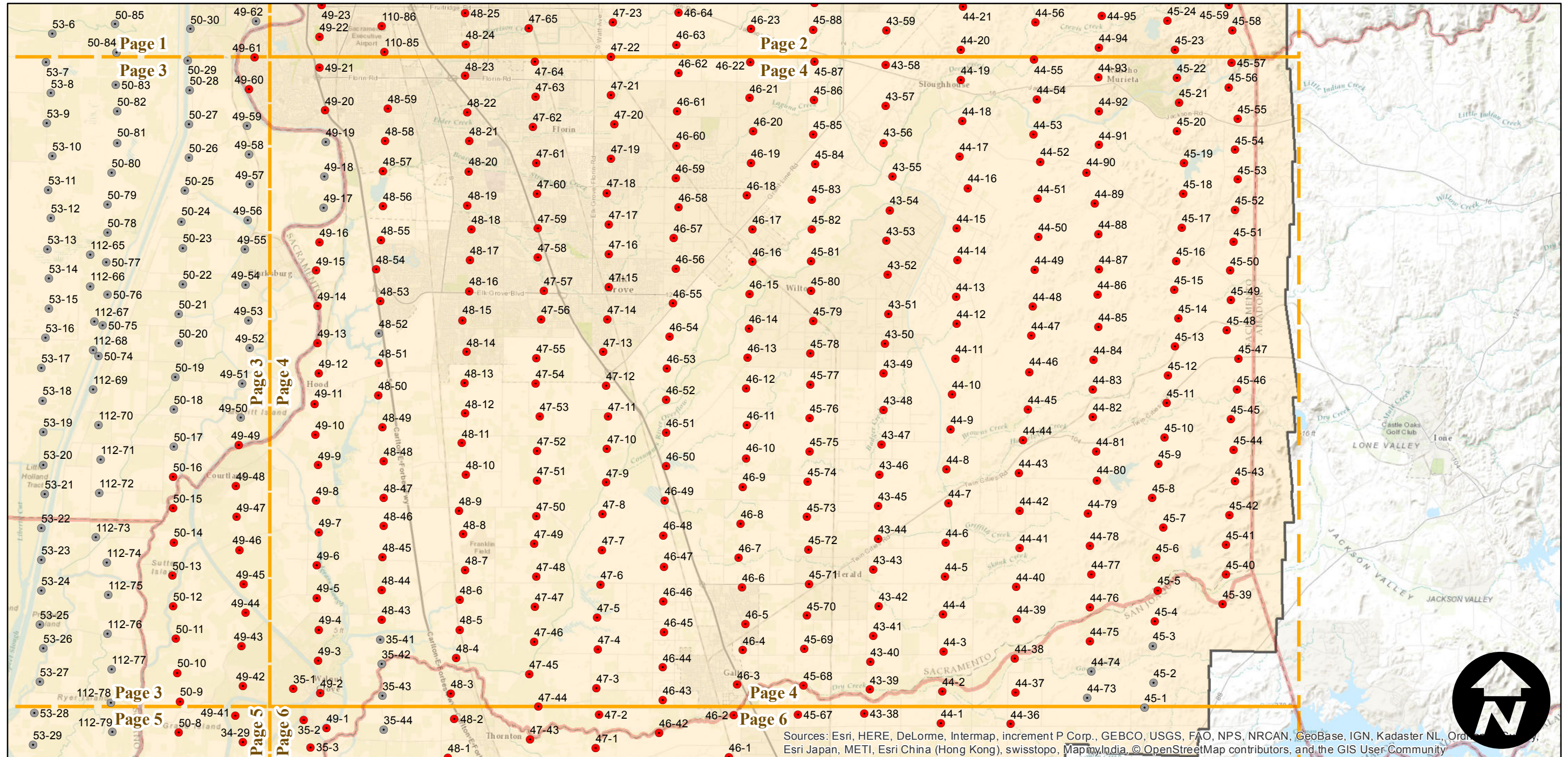
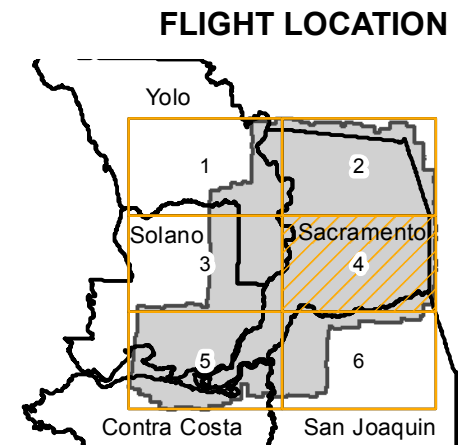
# ABC-1937

Counties: Sacramento, Contra Costa  
 Flight date(s): 08-16-1937 to 10-6-1937  
 Scale: 1:20,000  
 Overlap: 60%

Complete Metadata:  
<http://www.library.ucsb.edu/map-imagery-lab/aerial-photography-information>

Note: Sacramento County. Some photographs held only in digital format. Digital imagery was borrowed from UC Berkeley and from UC Davis (July 2009).

- MIL owns frame
- MIL does not own frame



Sources: Esri, HERE, DeLorme, Intermap, increment P Corp., GEBCO, USGS, FAO, NPS, NRCAN, GeoBase, IGN, Kadaster NL, Ordnance Survey, Esri Japan, METI, Esri China (Hong Kong), swisstopo, MapmyIndia, © OpenStreetMap contributors, and the GIS User Community



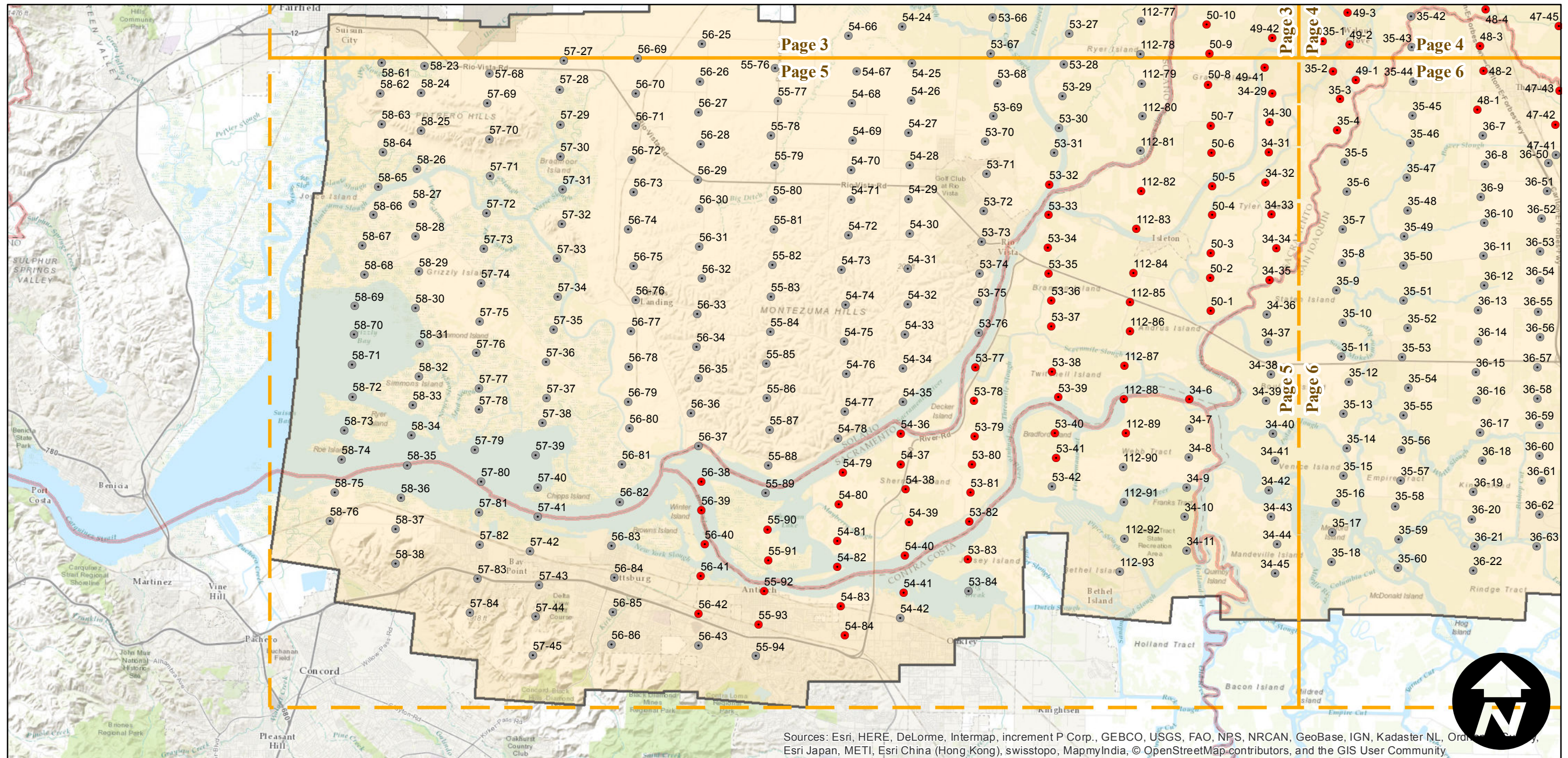
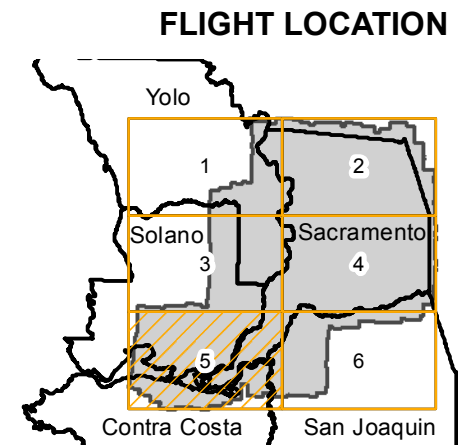
# ABC-1937

Counties: Sacramento, Contra Costa  
Flight date(s): 08-16-1937 to 10-6-1937  
Scale: 1:20,000  
Overlap: 60%

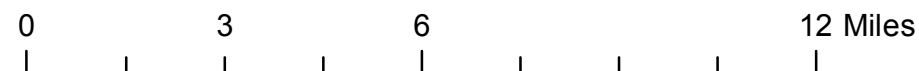
Complete Metadata:  
<http://www.library.ucsb.edu/map-imagery-lab/aerial-photography-information>

Note: Sacramento County. Some photographs held only in digital format. Digital imagery was borrowed from UC Berkeley and from UC Davis (July 2009).

- MIL owns frame
- MIL does not own frame



Sources: Esri, HERE, DeLorme, Intermap, increment P Corp., GEBCO, USGS, FAO, NPS, NRCAN, GeoBase, IGN, Kadaster NL, Ordnance Survey, Esri Japan, METI, Esri China (Hong Kong), swisstopo, MapmyIndia, © OpenStreetMap contributors, and the GIS User Community





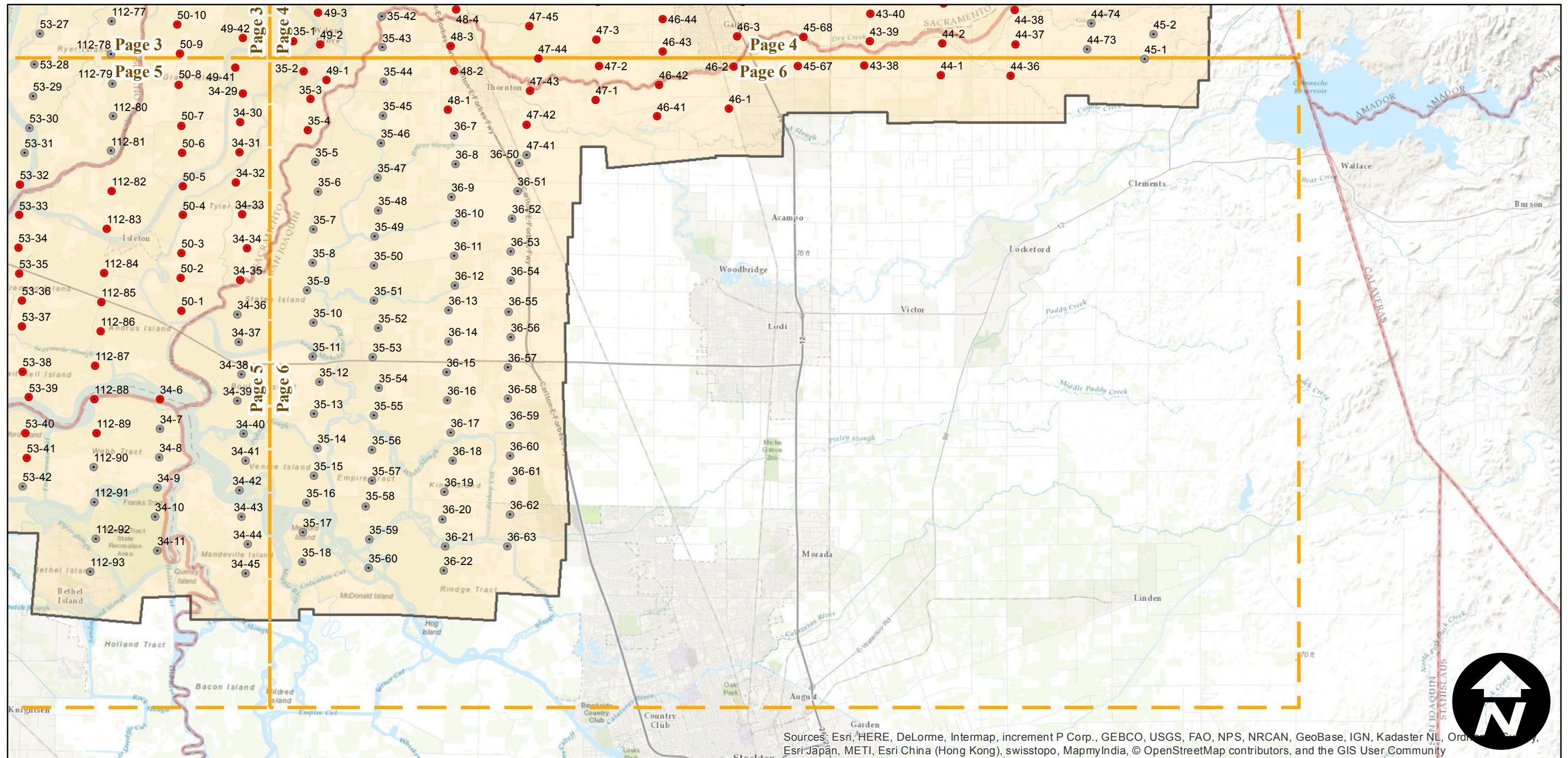
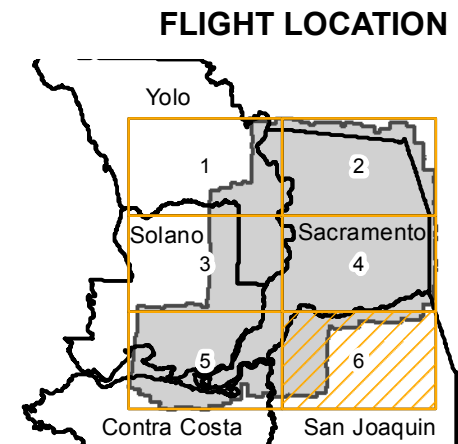
# ABC-1937

Counties: Sacramento, Contra Costa  
 Flight date(s): 08-16-1937 to 10-6-1937  
 Scale: 1:20,000  
 Overlap: 60%

Complete Metadata:  
<http://www.library.ucsb.edu/map-imagery-lab/aerial-photography-information>

Note: Sacramento County. Some photographs held only in digital format. Digital imagery was borrowed from UC Berkeley and from UC Davis (July 2009).

- MIL owns frame
- MIL does not own frame



Sources: Esri, HERE, DeLorme, Intermap, increment P Corp., GEBCO, USGS, FAO, NPS, NRCAN, GeoBase, IGN, Kadaster NL, Ordnance Survey, Esri Japan, METI, Esri China (Hong Kong), swisstopo, MapmyIndia, © OpenStreetMap contributors, and the GIS User Community