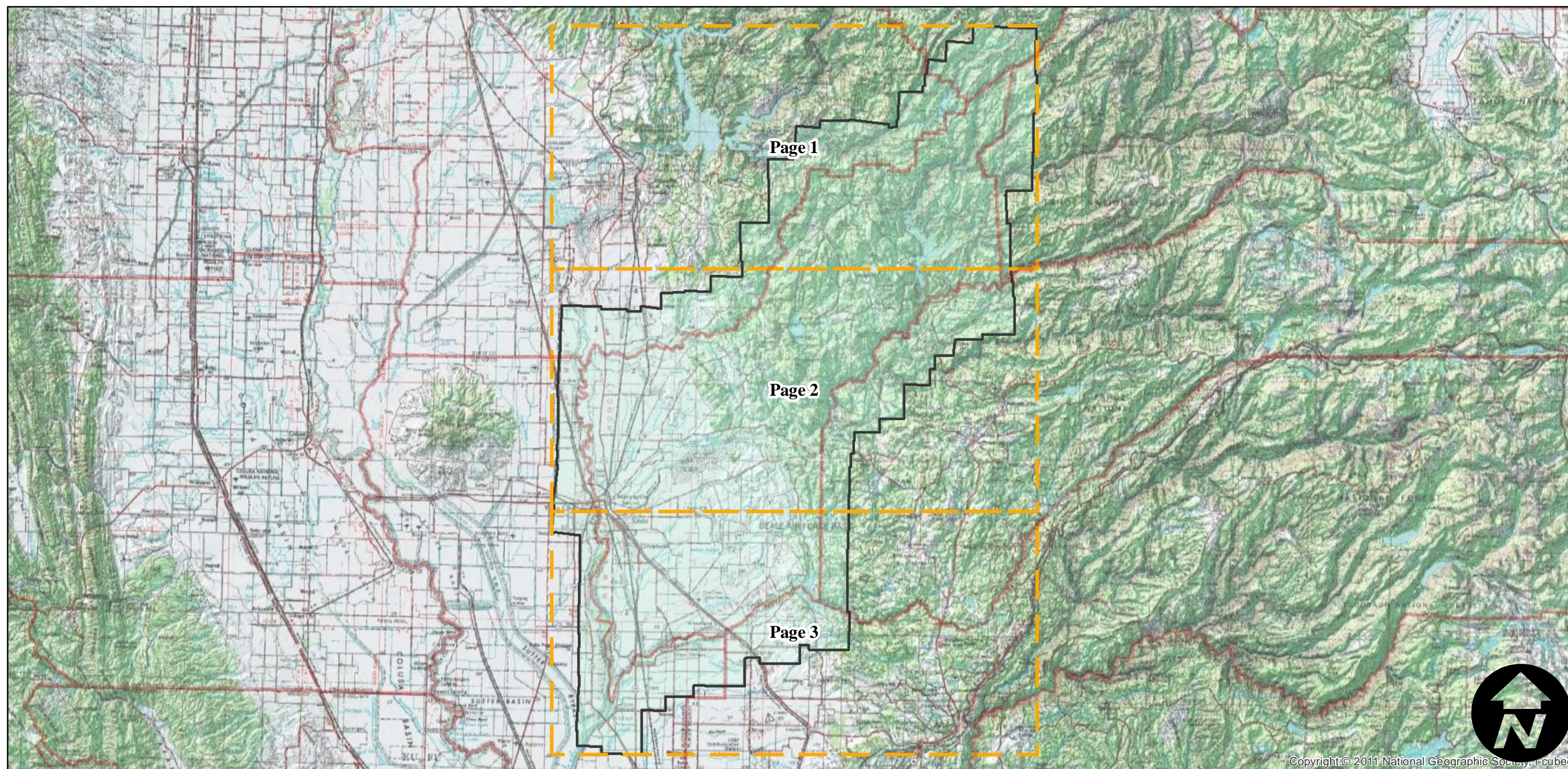
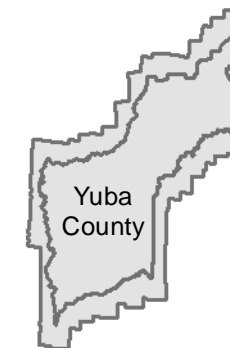


# ABA-1952

Counties: Yuba  
Flight date(s): 6/29/1952 to 8/22/1952  
Scale: 1: 20,000  
Overlap: 60%

Complete Metadata:  
<http://www.library.ucsb.edu/mil/aerial-photography-tools>

## FLIGHT LOCATION



0 10 20 40 Miles

Index to Aerial Photography  
Page Key

Scale of this index: 1:515,000

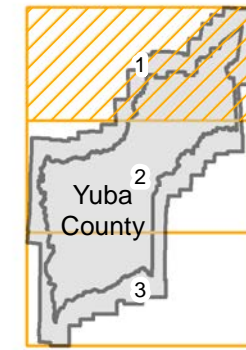
Copyright © 2011 National Geographic Society, Inc. cubed

# ABA-1952

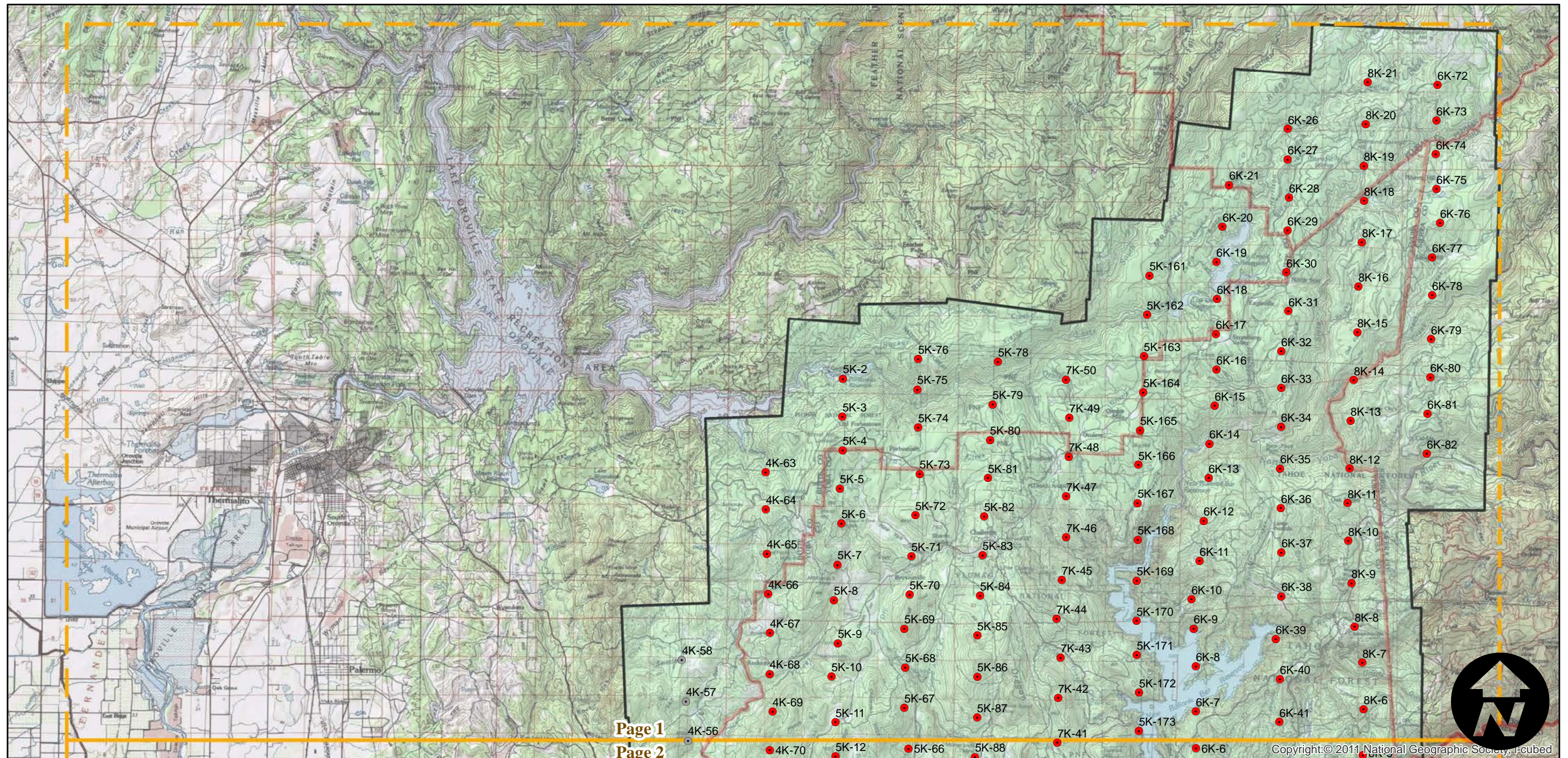
Counties: Yuba  
Flight date(s): 6/29/1952 to 8/22/1952  
Scale: 1: 20,000  
Overlap: 60%

Complete Metadata:  
<http://www.library.ucsb.edu/mil/aerial-photography-tools>

## FLIGHT LOCATION



- MIL owns frame
- MIL does not own frame



0 2.5 5 10 Miles

Index to Aerial Photography  
Page 1 of 3

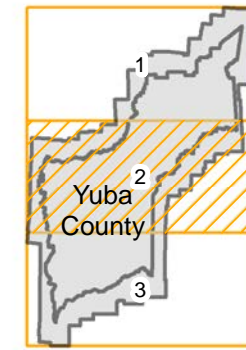
Scale of this index: 1:172,000

# ABA-1952

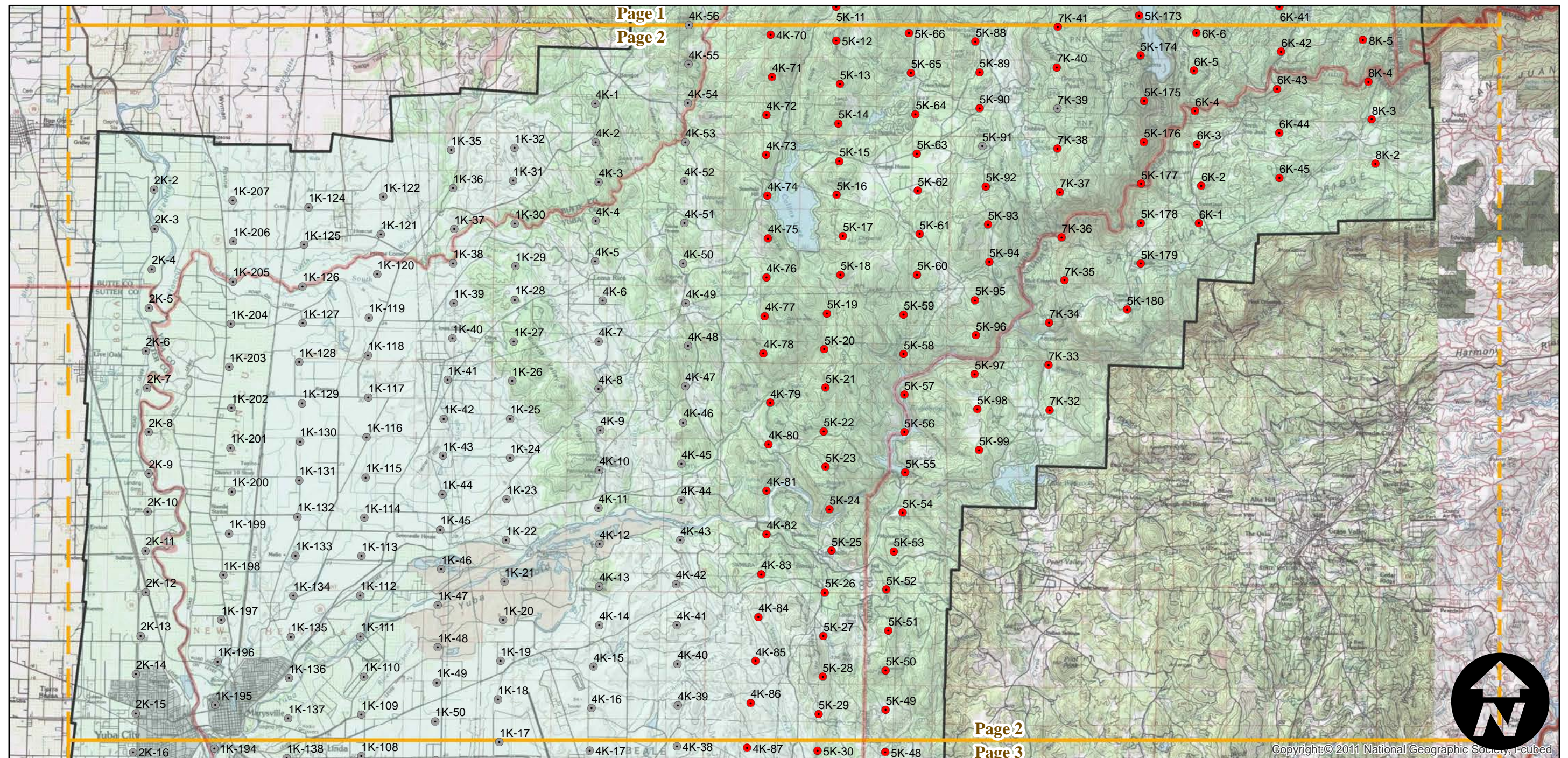
Counties: Yuba  
Flight date(s): 6/29/1952 to 8/22/1952  
Scale: 1: 20,000  
Overlap: 60%

Complete Metadata:  
<http://www.library.ucsb.edu/mil/aerial-photography-tools>

## FLIGHT LOCATION



- MIL owns frame
- MIL does not own frame



0 2.5 5 10 Miles

Index to Aerial Photography  
Page 2 of 3

Scale of this index: 1:172,000

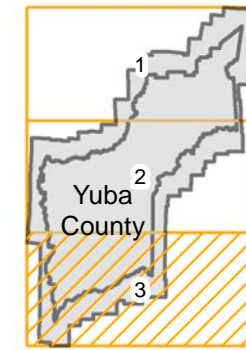
Copyright: © 2011 National Geographic Society, I-cubed

# ABA-1952

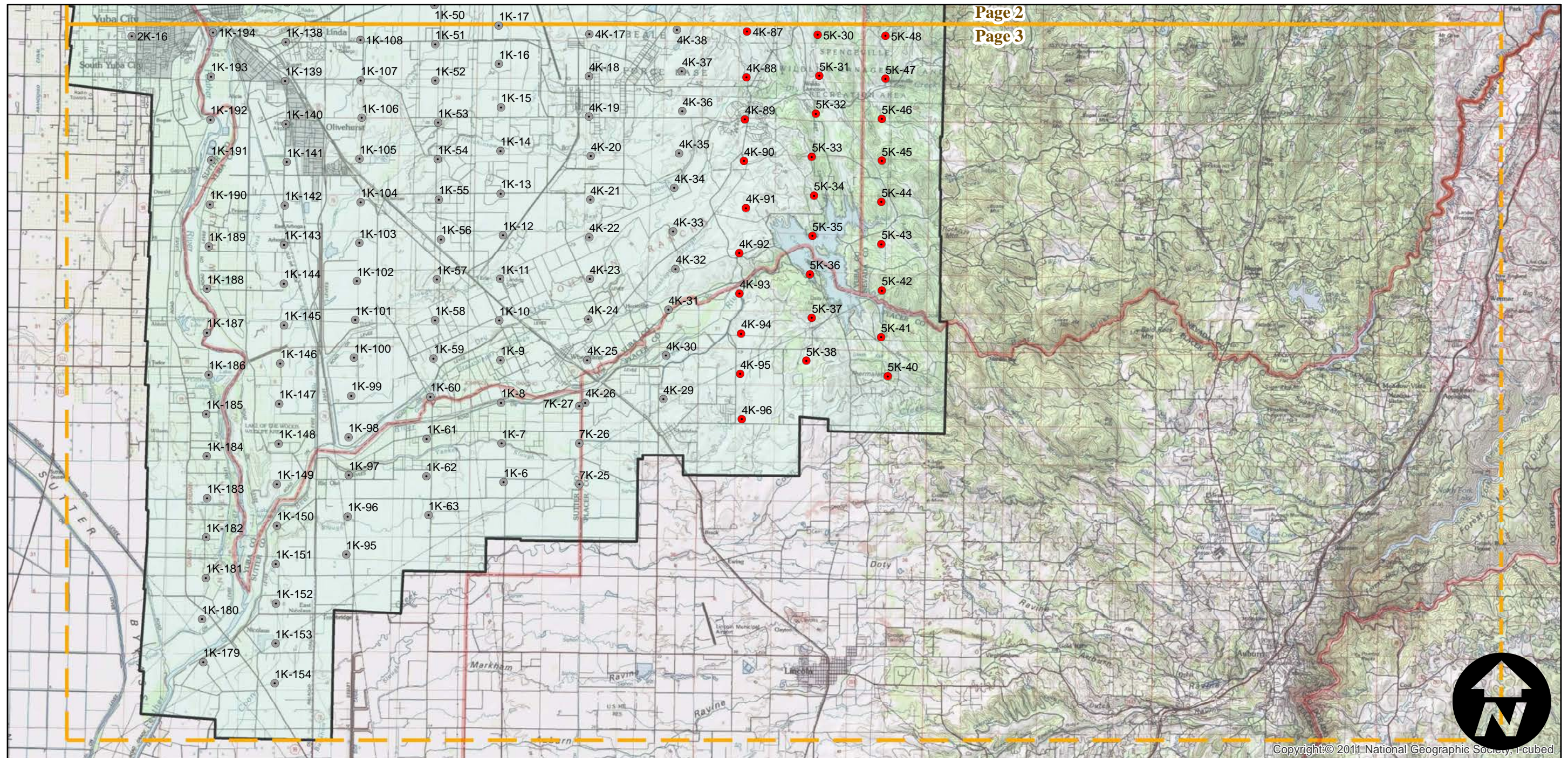
Counties: Yuba  
Flight date(s): 6/29/1952 to 8/22/1952  
Scale: 1: 20,000  
Overlap: 60%

Complete Metadata:  
<http://www.library.ucsb.edu/mil/aerial-photography-tools>

## FLIGHT LOCATION



- MIL owns frame
- MIL does not own frame



0 2.5 5 10 Miles

Index to Aerial Photography  
Page 3 of 3

Scale of this index: 1:172,000

Copyright © 2011 National Geographic Society, I-cubed