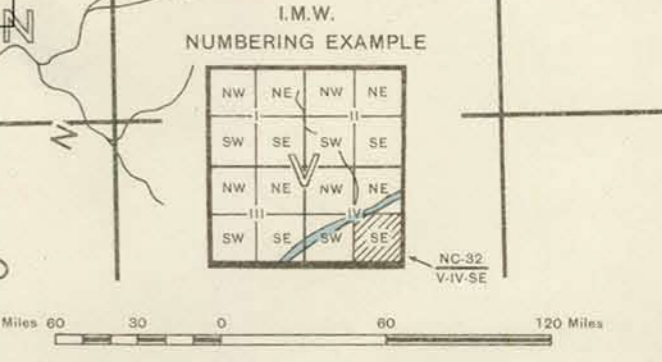
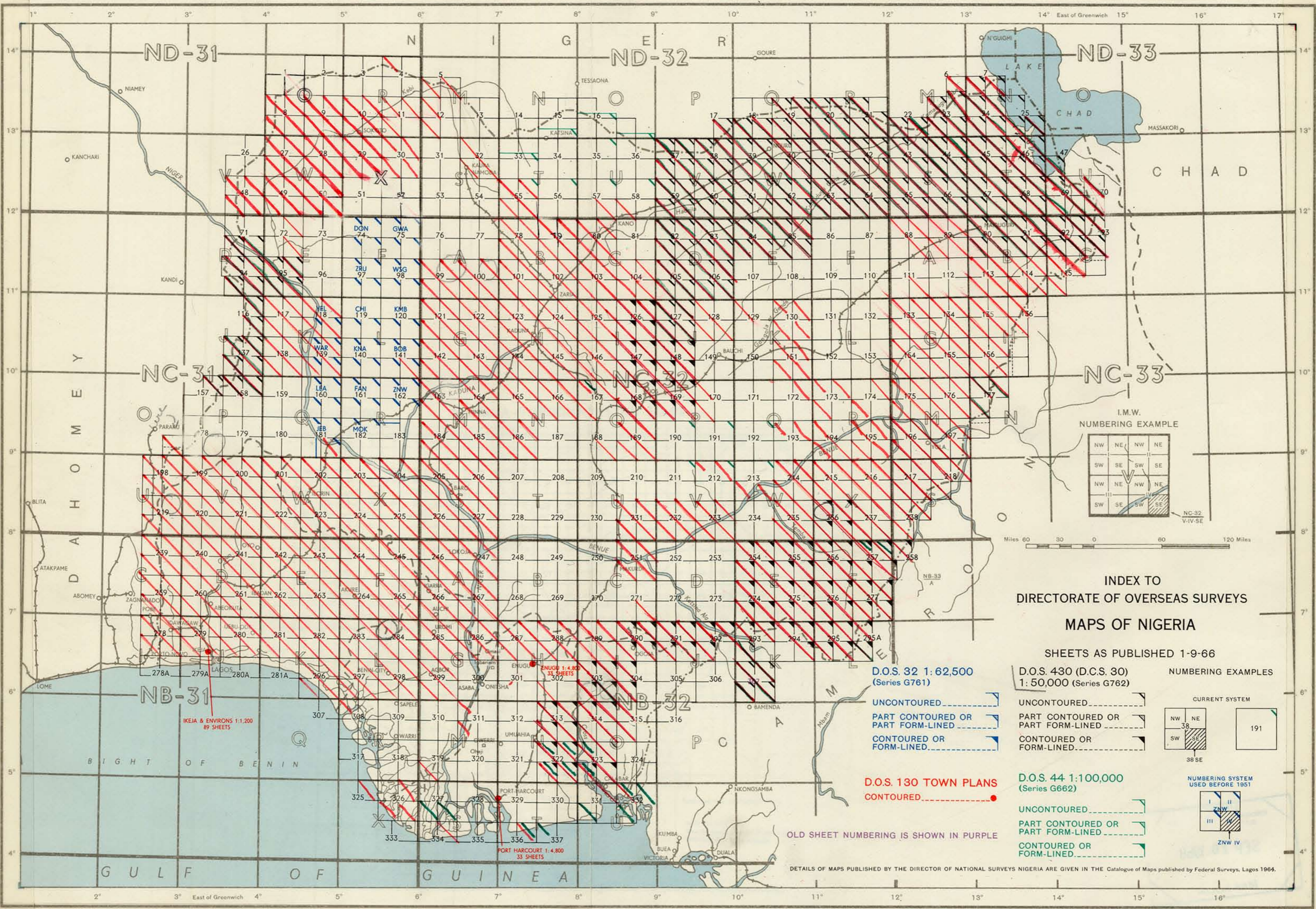


NIGERIA



INDEX TO DIRECTORATE OF OVERSEAS SURVEYS MAPS OF NIGERIA

SHEETS AS PUBLISHED 1-9-66

<p>D.O.S. 32 1:62,500 (Series G761)</p> <p>UNCONTOURED.....</p> <p>PART CONTOURED OR PART FORM-LINED.....</p> <p>CONTOURED OR FORM-LINED.....</p> <p>D.O.S. 130 TOWN PLANS CONTOURED.....</p> <p>OLD SHEET NUMBERING IS SHOWN IN PURPLE</p>	<p>D.O.S. 430 (D.C.S. 30) 1:50,000 (Series G762)</p> <p>UNCONTOURED.....</p> <p>PART CONTOURED OR PART FORM-LINED.....</p> <p>CONTOURED OR FORM-LINED.....</p> <p>D.O.S. 44 1:100,000 (Series G662)</p> <p>UNCONTOURED.....</p> <p>PART CONTOURED OR PART FORM-LINED.....</p> <p>CONTOURED OR FORM-LINED.....</p>
---	---

CURRENT SYSTEM

NW	NE
38	
SW	SE

38 SE

NUMBERING SYSTEM
USED BEFORE 1951

I	II
III	IV

ZNW IV

DETAILS OF MAPS PUBLISHED BY THE DIRECTOR OF NATIONAL SURVEYS NIGERIA ARE GIVEN IN THE Catalogue of Maps published by Federal Surveys, Lagos 1964.

D.O.S. (Map) 1119
© CROWN COPYRIGHT 1966
Agents for the sale of this map published by Directorate of Overseas Surveys are - Edward Stanford Ltd., 12-14, Long Row, London, W.C.3. Price 5d. net. Copies can also be obtained from Nigeria Survey Offices, Lagos, Ibadan, Benin City, Enugu and Kaduna.
Compiled and drawn by Directorate of Overseas Surveys. Photographed by D.O.S. and printed by S.P.C., R.E. 1966. 2500/1/AA/183/1/SPC

FILE ALPHANUMERICALLY
(10NE, 10NW, 10SE, 10SW)

INDEX MAP	
NIGERIA (SERIES)	8450s
NIGERIA (DOS 430.G762)	50
1:50,000	G7