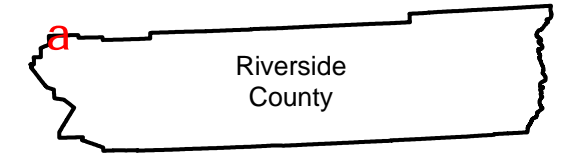


WAS-G05 (1:9K)

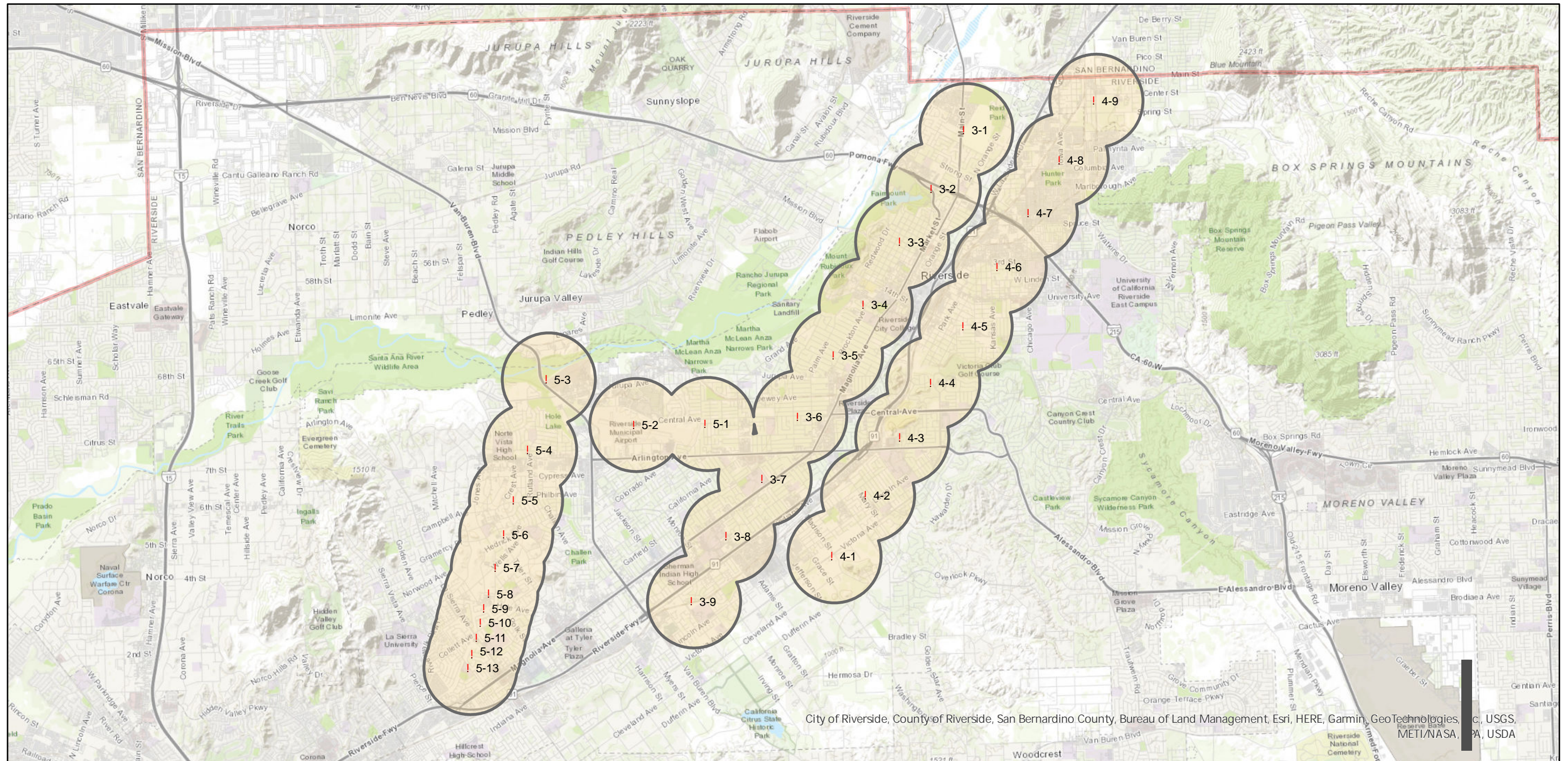
FLIGHT LOCATION

Counties: Riverside
Flight date(s): 07-14-1968
Scale: 1:9,000
Overlap: 20%

Note: Pomona, Upland, Ontario, and Riverside. Part of flight line #5 has 80% overlap. Imagery acquired March 2009.



Complete Metadata:
<https://www.library.ucsb.edu/src/airphotos/aerial-photography-information>



City of Riverside, County of Riverside, San Bernardino County, Bureau of Land Management, Esri, HERE, Garmin, GeoTechnologies, c, USGS, METI/NASA, PA, USDA

