

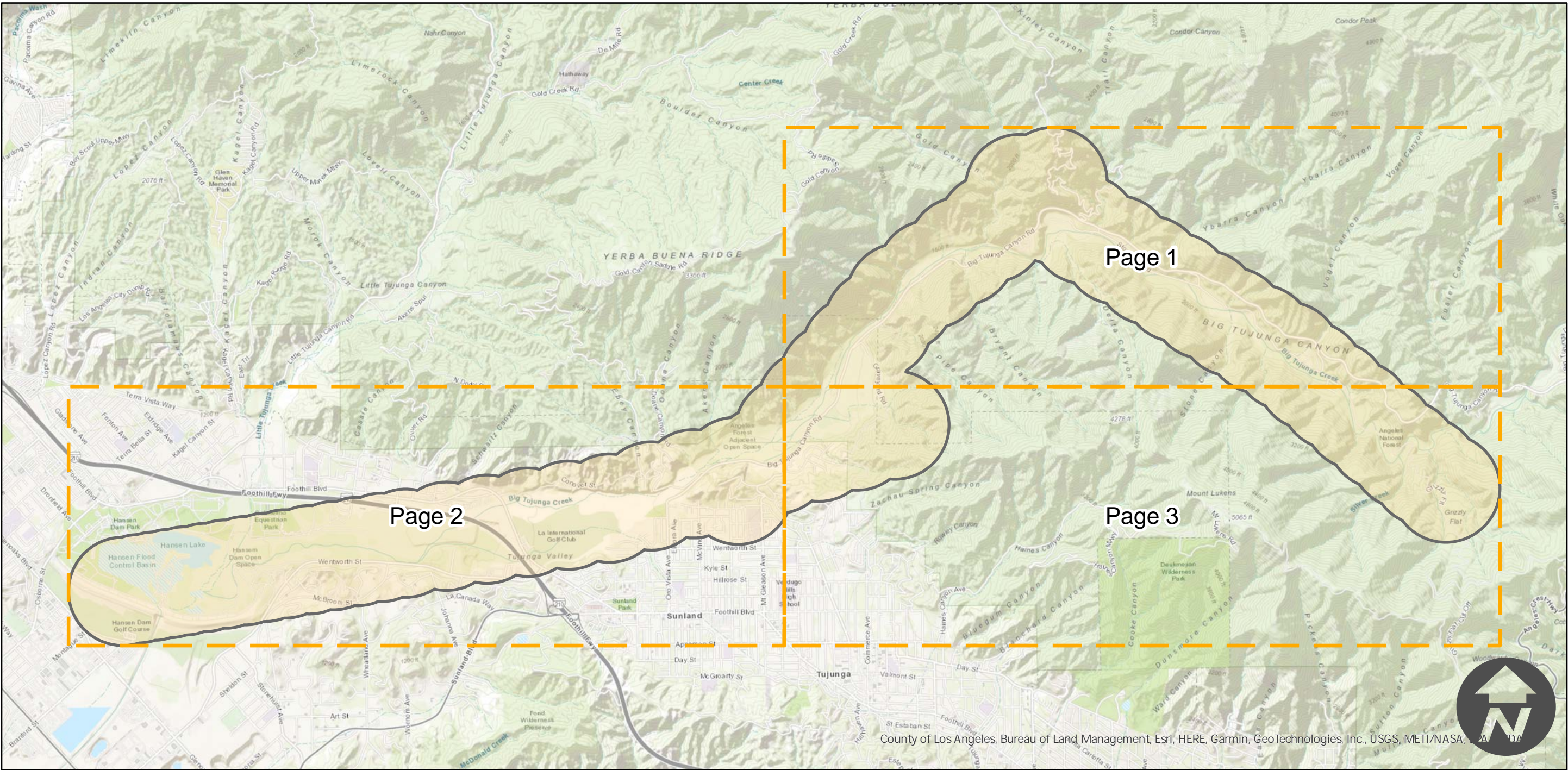
# TG-690V-25

Counties: Los Angeles  
Flight date(s): 01-29-1969  
Scale: 1:6,000  
Overlap: 60%

Complete Metadata:  
<https://www.library.ucsb.edu/src/airphotos/aerial-photography-information>

Note: Tujunga Canyon and vicinity.

## FLIGHT LOCATION



0 1 2 4 Miles

Index to Aerial Photography  
Page Key

Scale of this index: 1:52,000



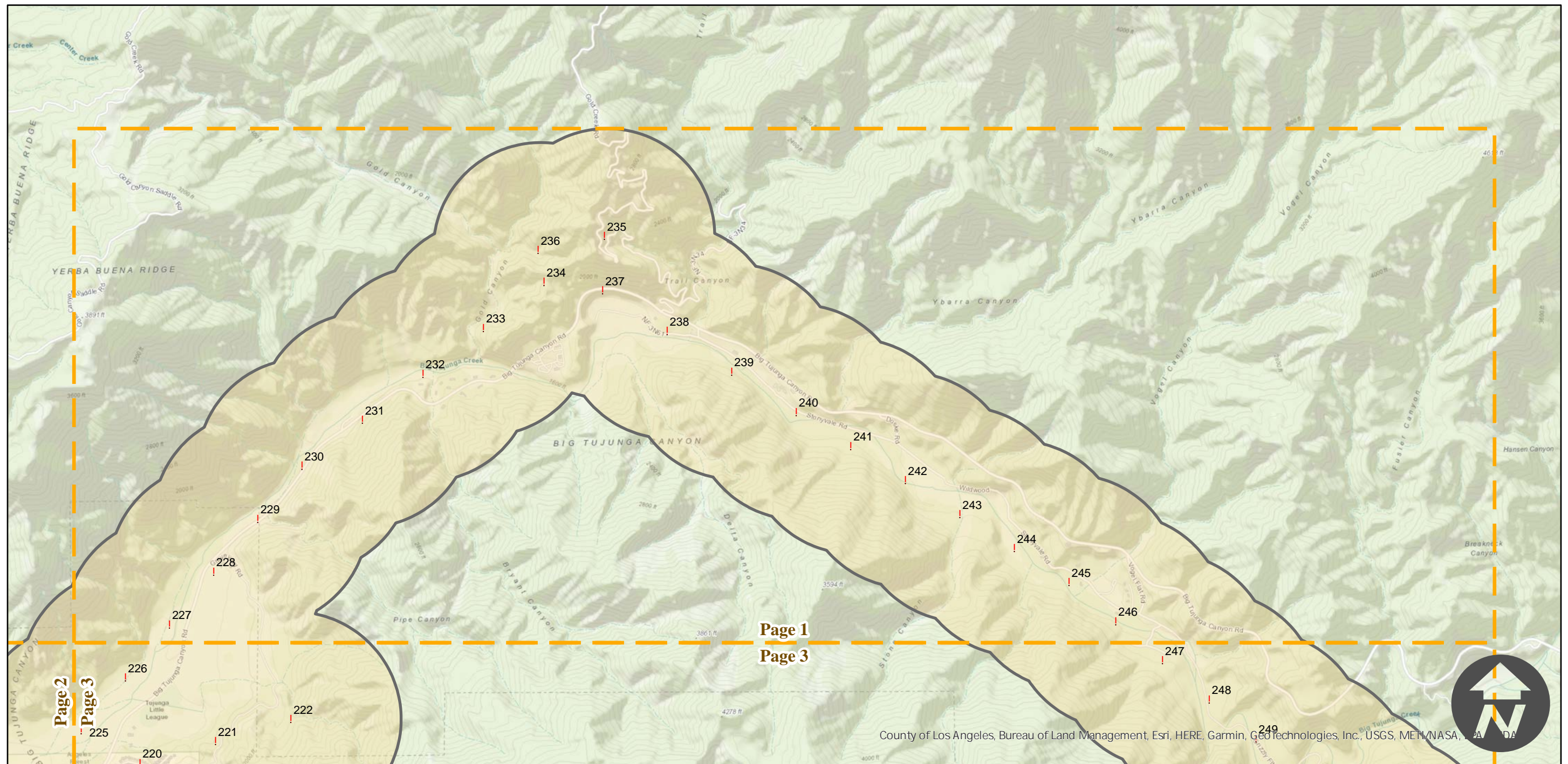
# TG-690V-25

Counties: Los Angeles  
Flight date(s): 01-29-1969  
Scale: 1:6,000  
Overlap: 60%

Complete Metadata:  
<https://www.library.ucsb.edu/src/airphotos/aerial-photography-information>

Note: Tujunga Canyon and vicinity.

## FLIGHT LOCATION



0 0.5 1 2 Miles

Index to Aerial Photography  
Page 1 of 3

Scale of this index: 1:26,000



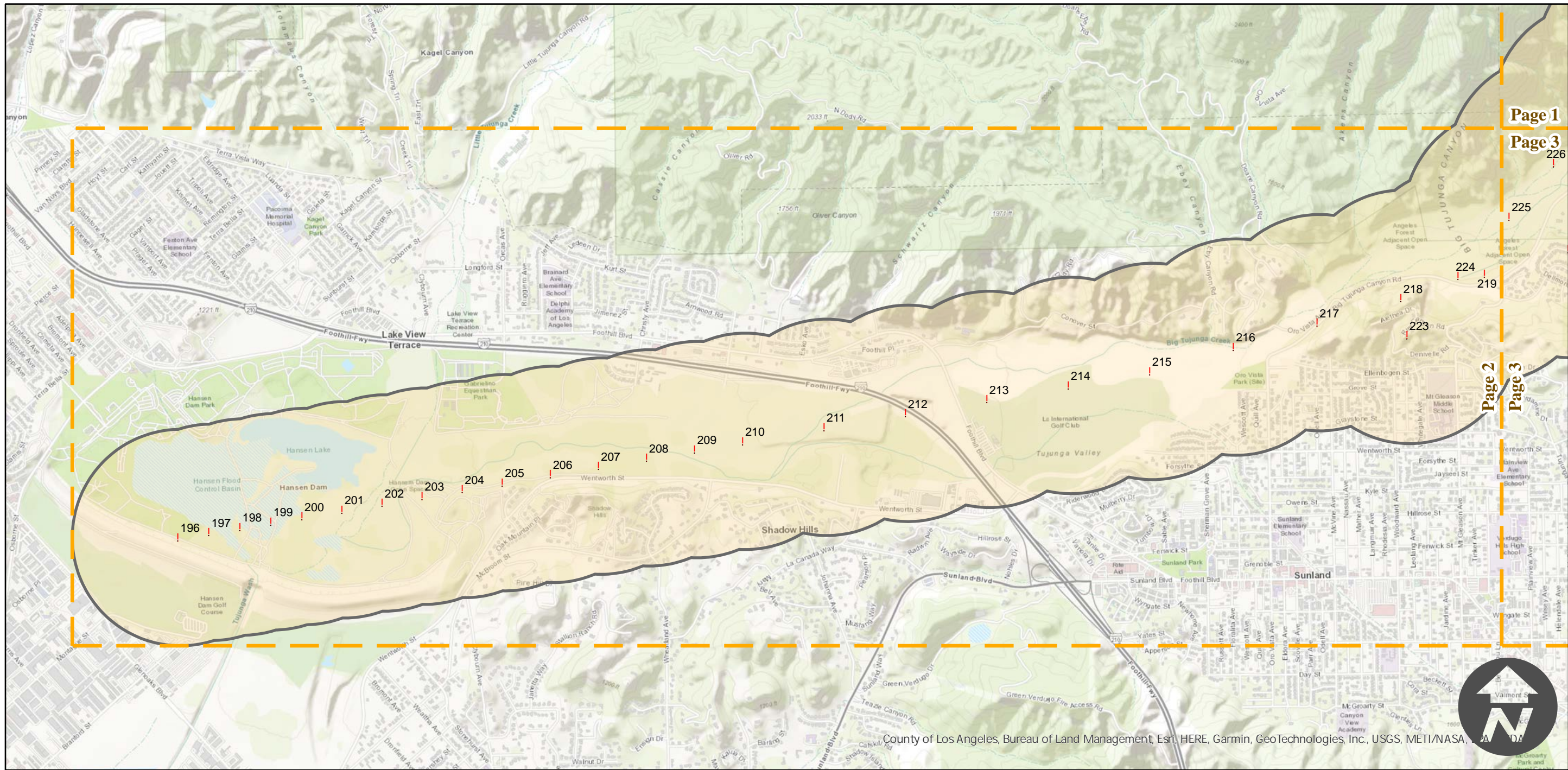
# TG-690V-25

Counties: Los Angeles  
Flight date(s): 01-29-1969  
Scale: 1:6,000  
Overlap: 60%

Complete Metadata:  
<https://www.library.ucsb.edu/src/airphotos/aerial-photography-information>

Note: Tujunga Canyon and vicinity.

## FLIGHT LOCATION



0 0.5 1 2 Miles

Index to Aerial Photography  
Page 2 of 3

Scale of this index: 1:26,000



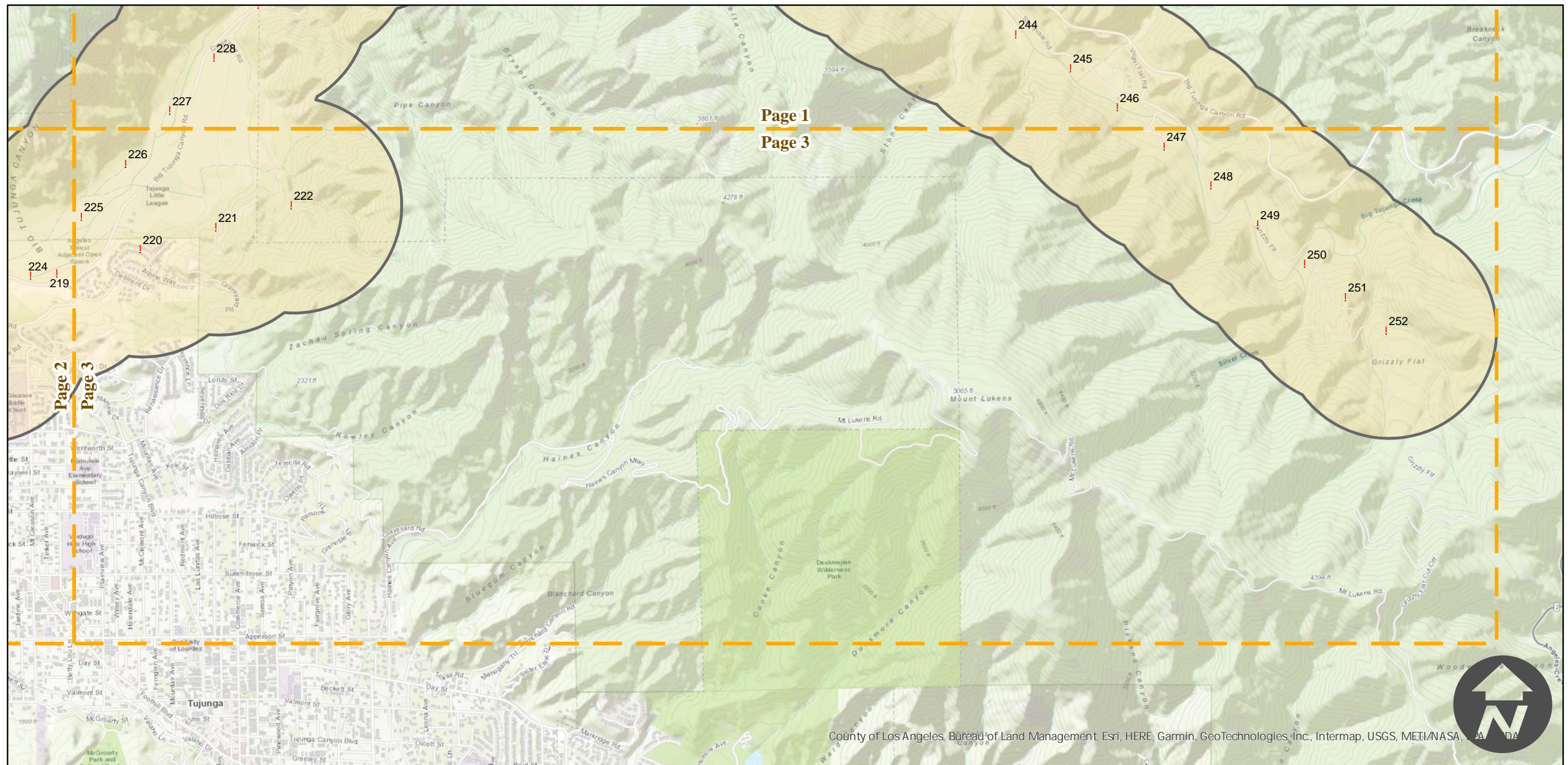
# TG-690V-25

Counties: Los Angeles  
Flight date(s): 01-29-1969  
Scale: 1:6,000  
Overlap: 60%

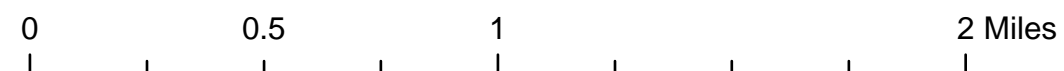
Complete Metadata:  
<https://www.library.ucsb.edu/src/airphotos/aerial-photography-information>

Note: Tujunga Canyon and vicinity.

## FLIGHT LOCATION



County of Los Angeles, Bureau of Land Management, Esri, HERE, Garmin, GeoTechnologies, Inc., Intermap, USGS, METI/NASA, EPA, NOAA



Index to Aerial Photography  
Page 3 of 3

Scale of this index: 1:26,000