

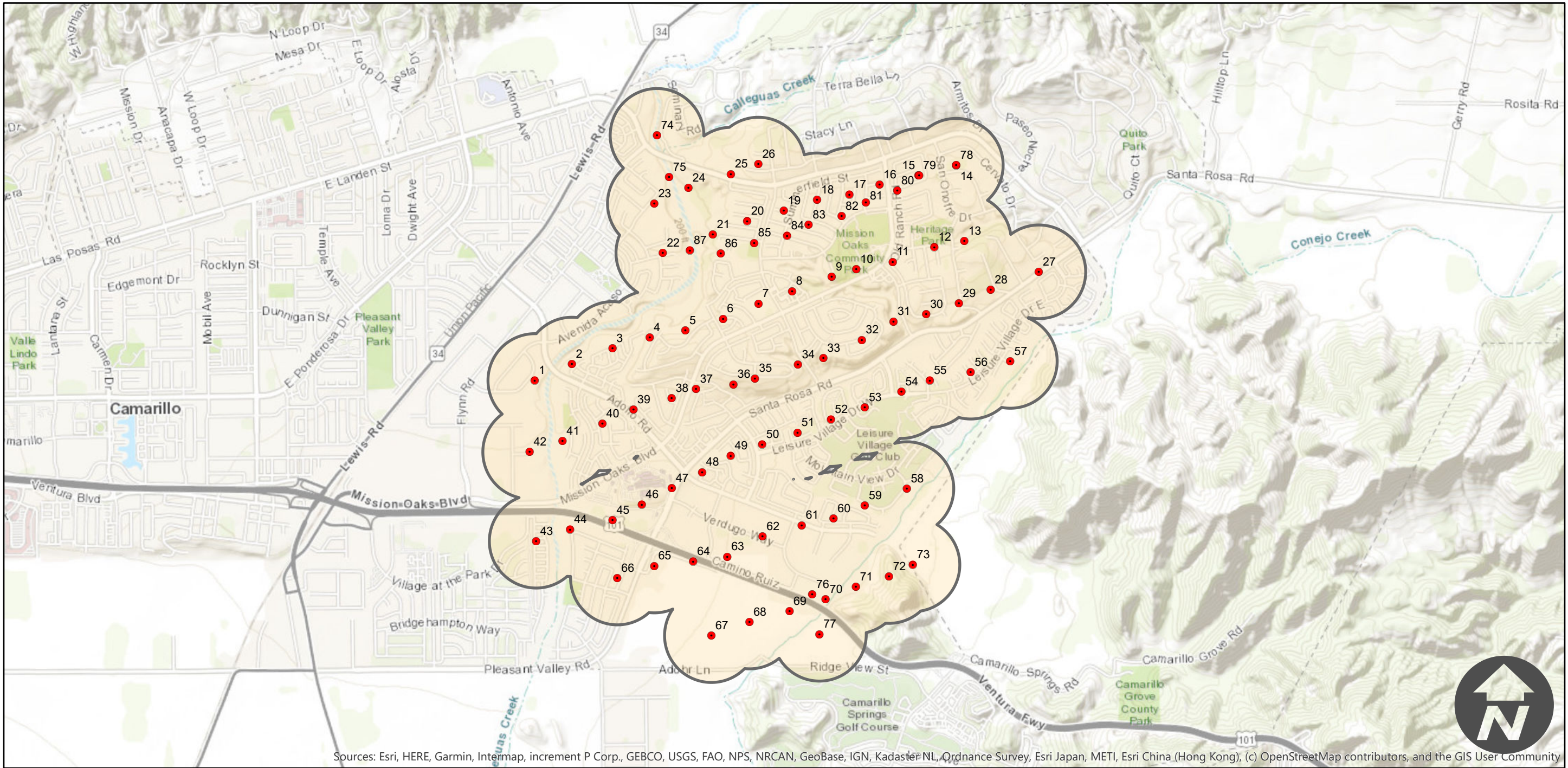
TA-KV

Counties: Ventura
Flight date(s): 12-15-1970
Scale: 1:3,000
Overlap: 60%

Complete Metadata:
<https://www.library.ucsb.edu/src/airphotos/aerial-photography-information>

Note: Imagery from east of Camarillo covering an area called Pleasant Valley. Bounded in the west to east direction by U.S. Highway 101 and Upland Road, and in the south to north direction by Conejo Creek and Colleguas Creek.

FLIGHT LOCATION



Sources: Esri, HERE, Garmin, Intermap, increment P Corp., GEBCO, USGS, FAO, NPS, NRCAN, GeoBase, IGN, Kadaster NL, Ordnance Survey, Esri Japan, METI, Esri China (Hong Kong), (c) OpenStreetMap contributors, and the GIS User Community

