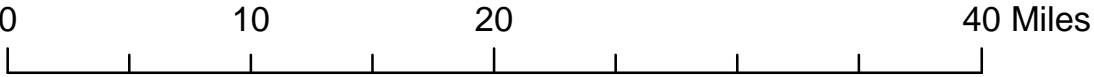
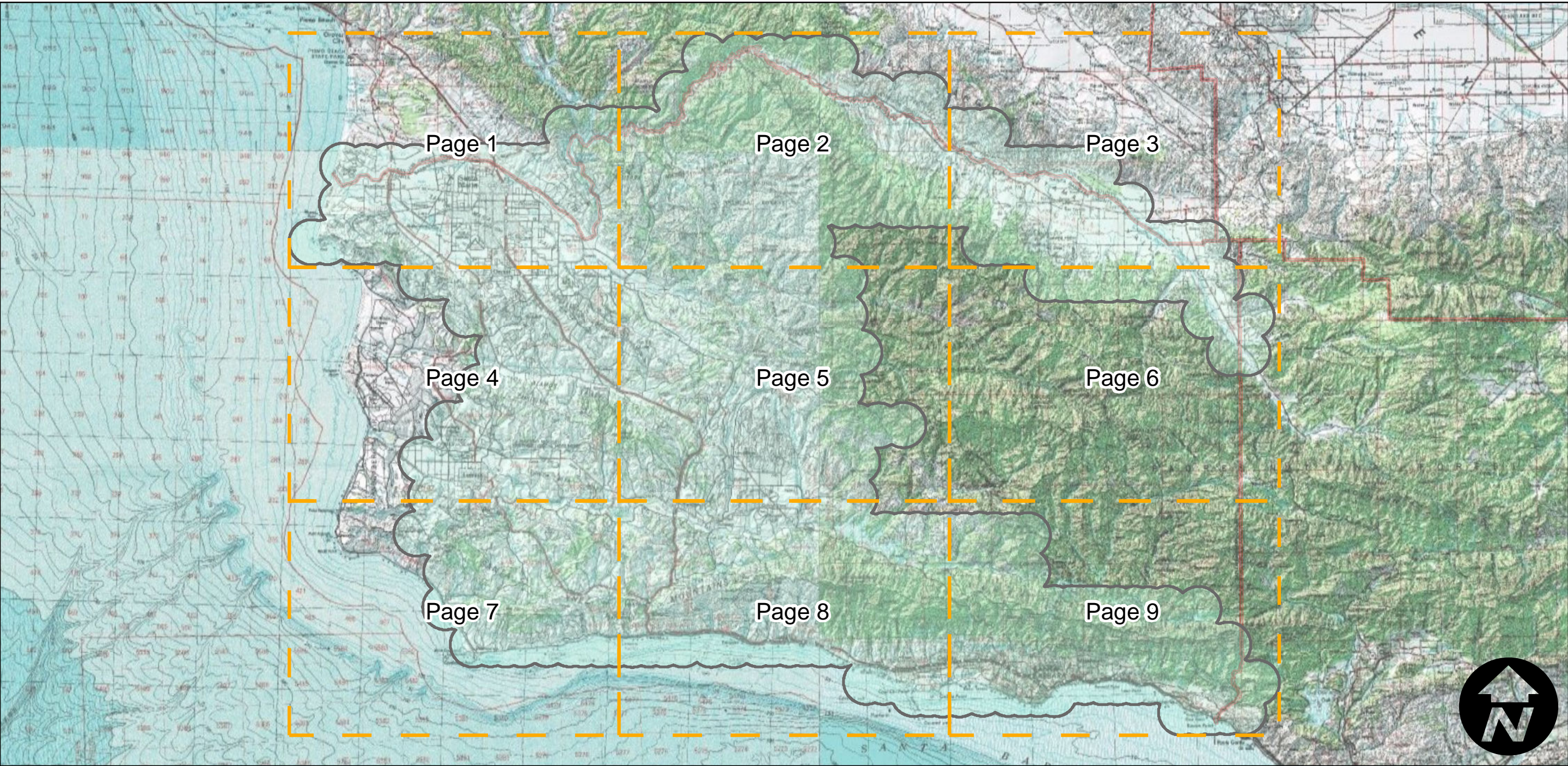
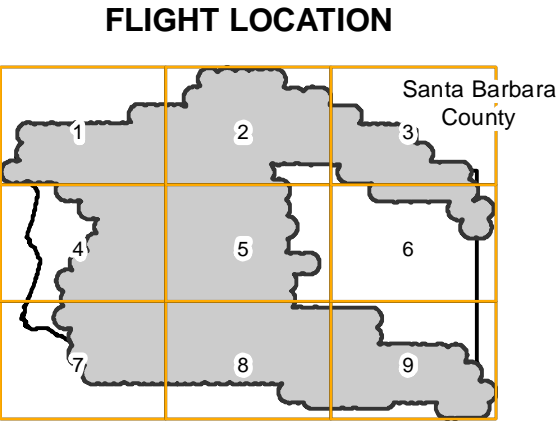


PW-SB-10

Counties: Santa Barbara
Flight date(s): 04-14-1997 to 8-22-1997
Scale: 1: 24,000
Overlap: 60%

Complete Metadata:
<http://www.library.ucsb.edu/mil/aerial-photography-tools>

Note: Flight flown using both Kodak and Agfa films after poor results using newly formulated Kodak aerial film. Clarity suffers on some frames due to problems with films.



Index to Aerial Photography
Page Key

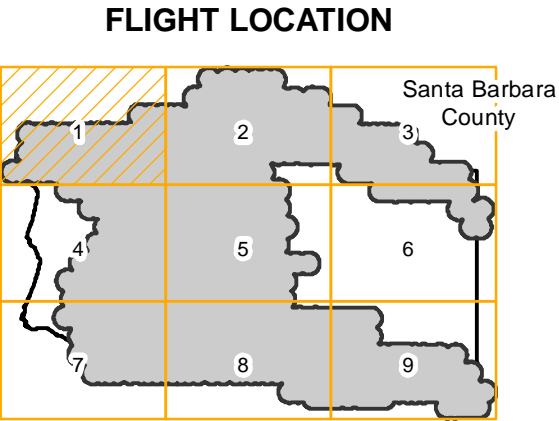
Scale of this index: 1:500,000

PW-SB-10

Counties: Santa Barbara
Flight date(s): 04-14-1997 to 8-22-1997
Scale: 1: 24,000
Overlap: 60%

Complete Metadata:
<http://www.library.ucsb.edu/mil/aerial-photography-tools>

Note: Flight flown using both Kodak and Agfa films after poor results using newly formulated Kodak aerial film. Clarity suffers on some frames due to problems with films.



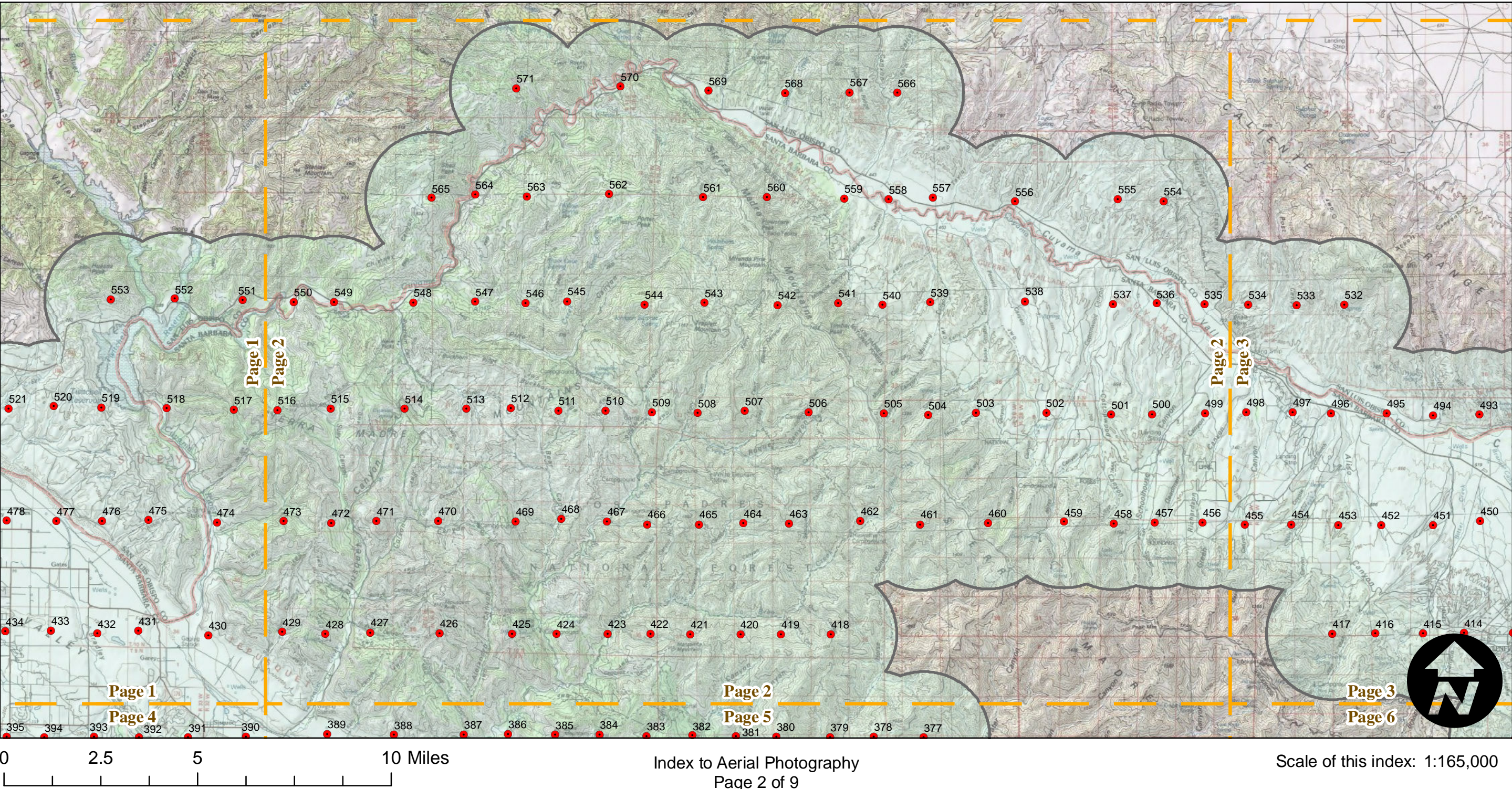
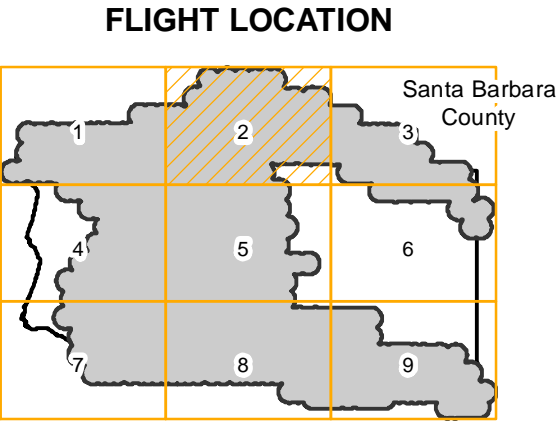
0 2.5 5 10 Miles

PW-SB-10

Counties: Santa Barbara
Flight date(s): 04-14-1997 to 8-22-1997
Scale: 1: 24,000
Overlap: 60%

Complete Metadata:
<http://www.library.ucsb.edu/mil/aerial-photography-tools>

Note: Flight flown using both Kodak and Agfa films after poor results using newly formulated Kodak aerial film. Clarity suffers on some frames due to problems with films.



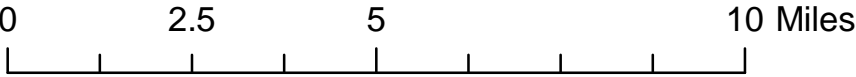
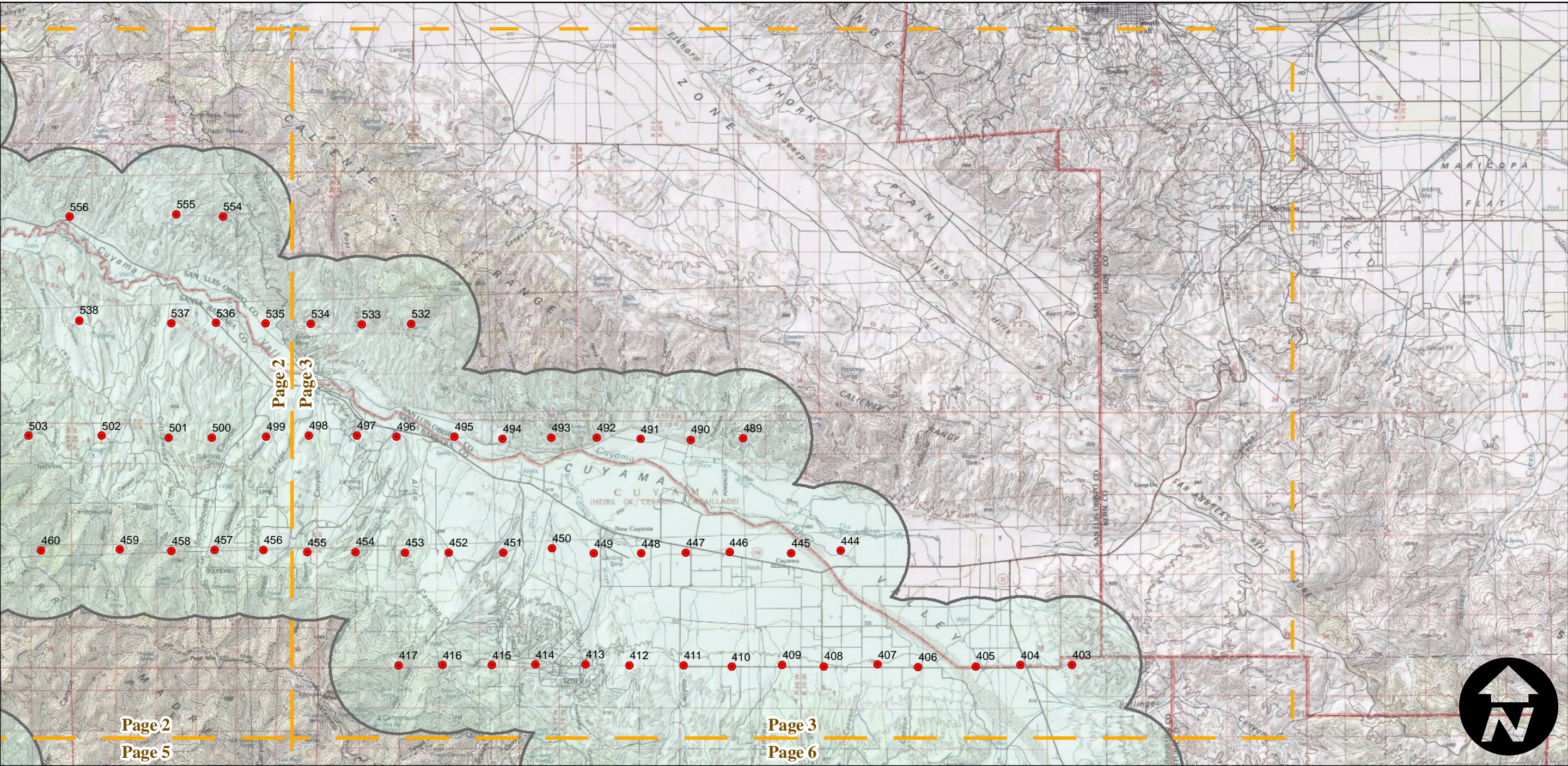
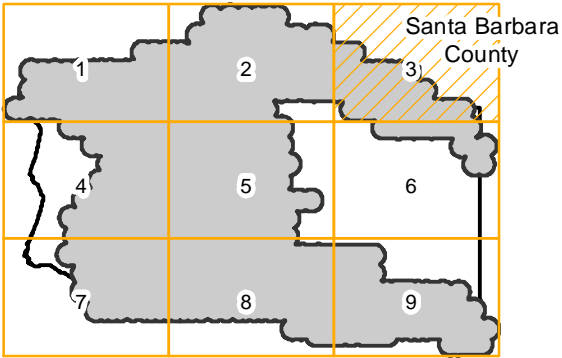
PW-SB-10

Counties: Santa Barbara
Flight date(s): 04-14-1997 to 8-22-1997
Scale: 1: 24,000
Overlap: 60%

Complete Metadata:
<http://www.library.ucsb.edu/mil/aerial-photography-tools>

Note: Flight flown using both Kodak and Agfa films after poor results using newly formulated Kodak aerial film. Clarity suffers on some frames due to problems with films.

FLIGHT LOCATION

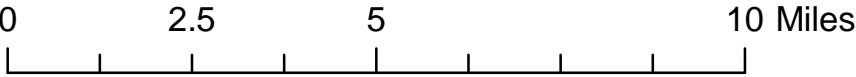
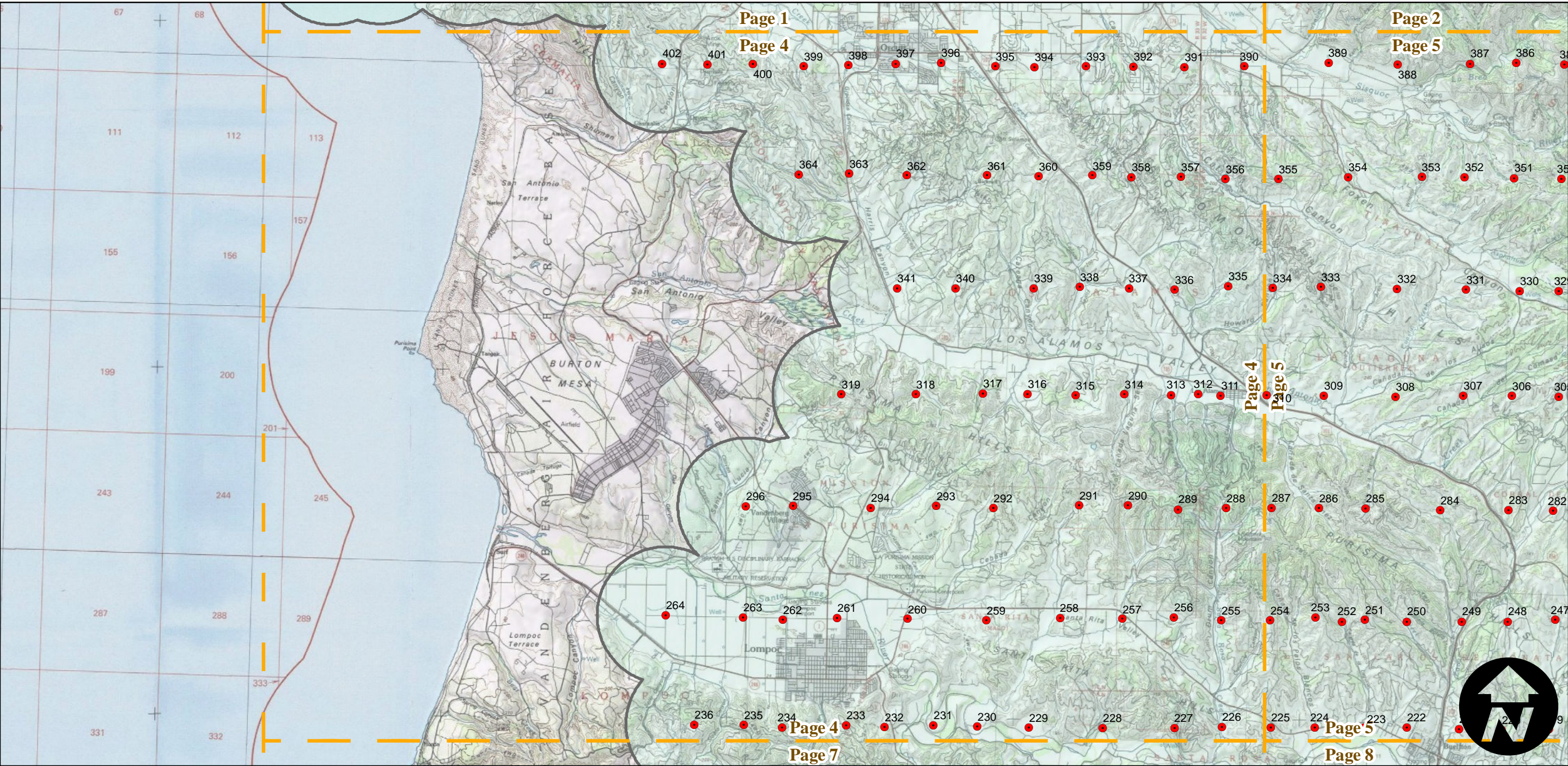
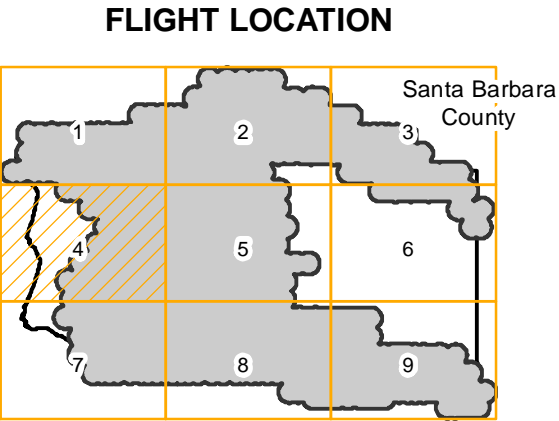


PW-SB-10

Counties: Santa Barbara
Flight date(s): 04-14-1997 to 8-22-1997
Scale: 1: 24,000
Overlap: 60%

Complete Metadata:
<http://www.library.ucsb.edu/mil/aerial-photography-tools>

Note: Flight flown using both Kodak and Agfa films after poor results using newly formulated Kodak aerial film. Clarity suffers on some frames due to problems with films.



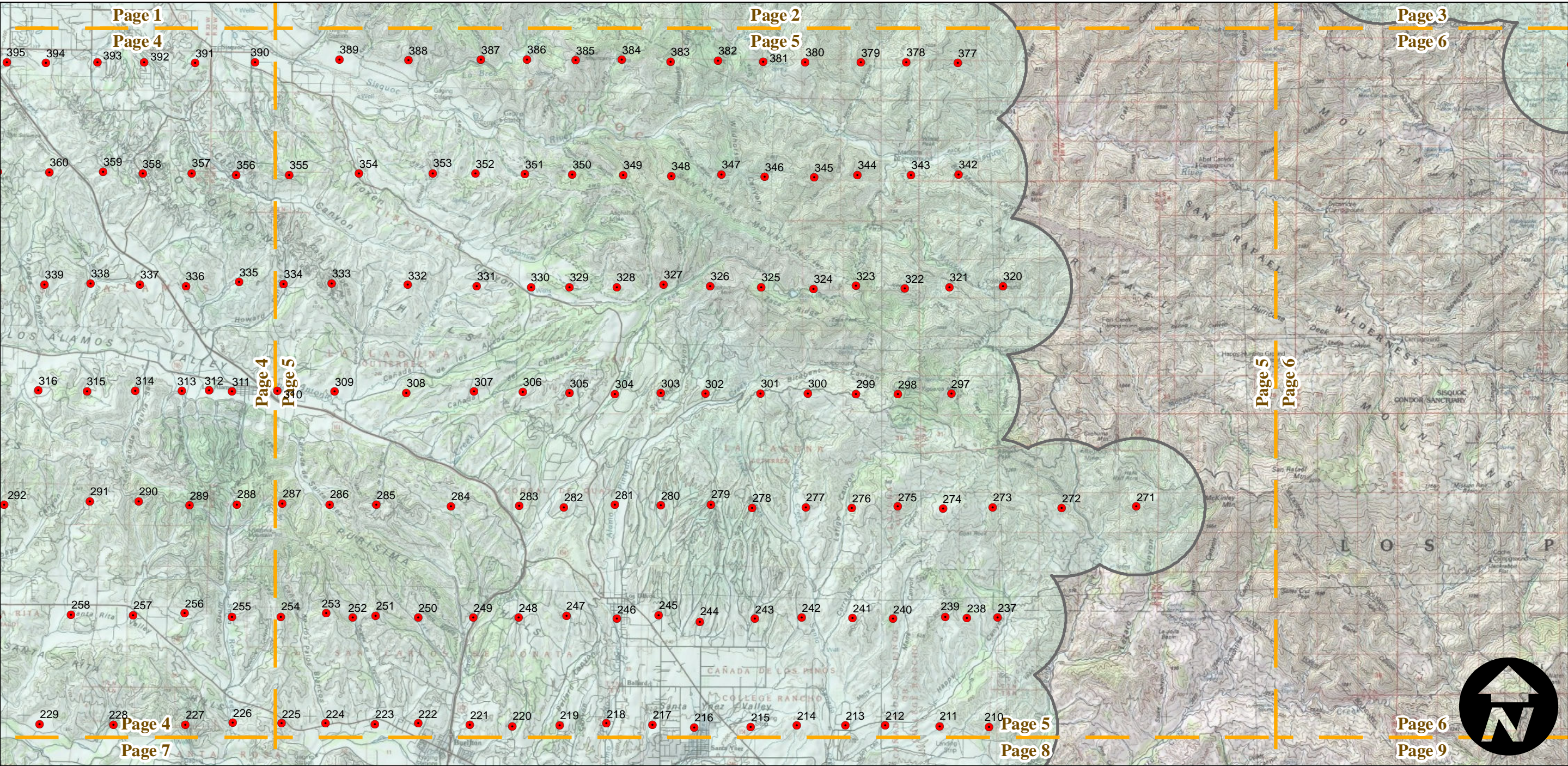
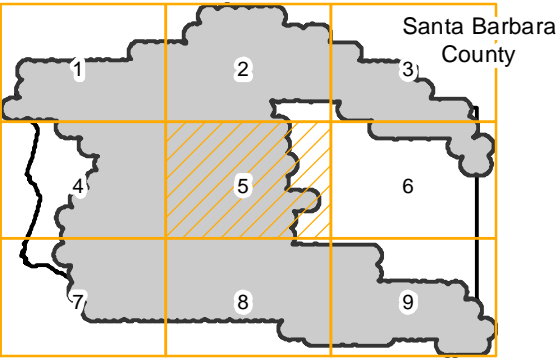
PW-SB-10

Counties: Santa Barbara
Flight date(s): 04-14-1997 to 8-22-1997
Scale: 1: 24,000
Overlap: 60%

Complete Metadata:
<http://www.library.ucsb.edu/mil/aerial-photography-tools>

Note: Flight flown using both Kodak and Agfa films after poor results using newly formulated Kodak aerial film. Clarity suffers on some frames due to problems with films.

FLIGHT LOCATION



0 2.5 5 10 Miles

Scale of this index: 1:165,000

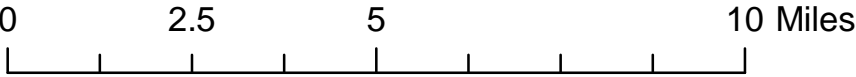
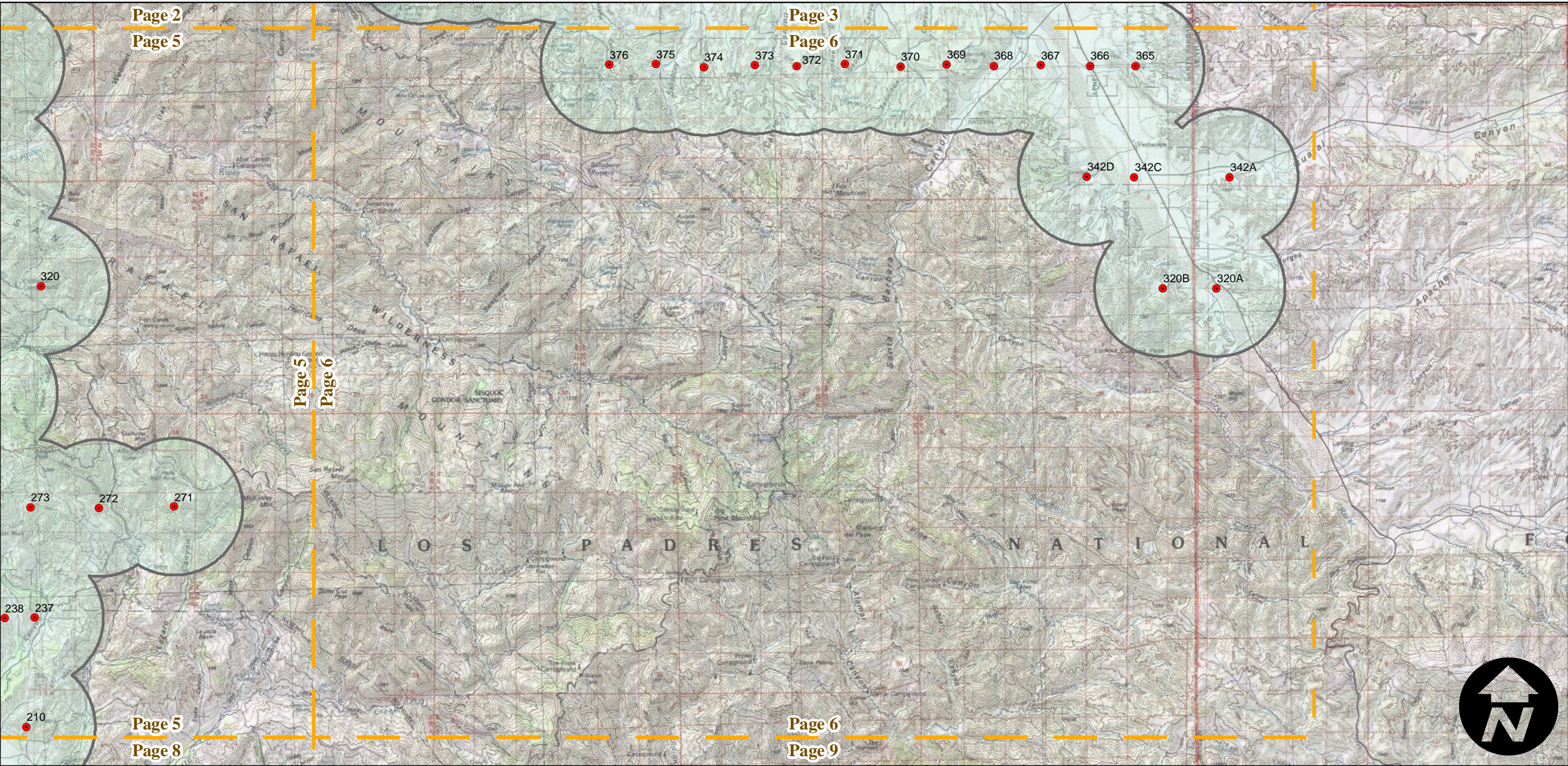
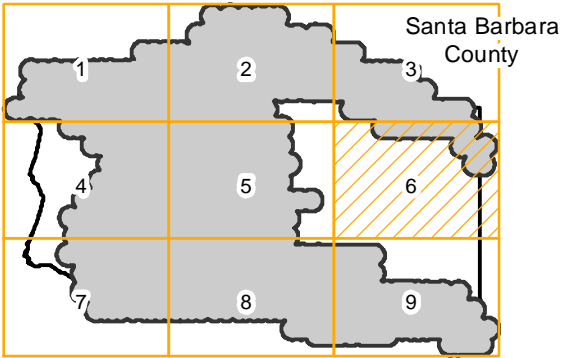
PW-SB-10

Counties: Santa Barbara
Flight date(s): 04-14-1997 to 8-22-1997
Scale: 1: 24,000
Overlap: 60%

Complete Metadata:
<http://www.library.ucsb.edu/mil/aerial-photography-tools>

Note: Flight flown using both Kodak and Agfa films after poor results using newly formulated Kodak aerial film. Clarity suffers on some frames due to problems with films.

FLIGHT LOCATION

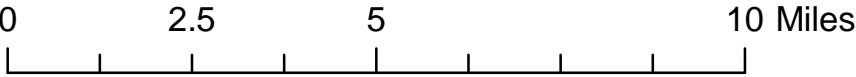
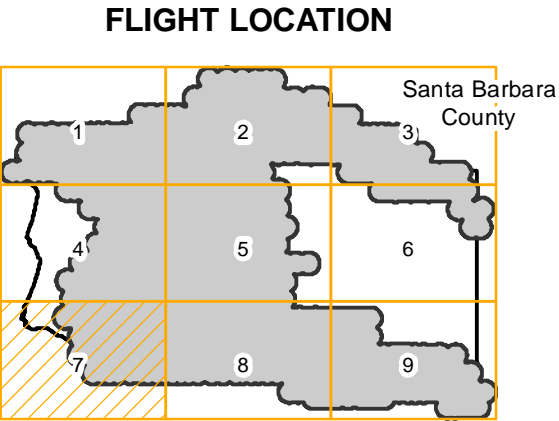


PW-SB-10

Counties: Santa Barbara
Flight date(s): 04-14-1997 to 8-22-1997
Scale: 1: 24,000
Overlap: 60%

Complete Metadata:
<http://www.library.ucsb.edu/mil/aerial-photography-tools>

Note: Flight flown using both Kodak and Agfa films after poor results using newly formulated Kodak aerial film. Clarity suffers on some frames due to problems with films.

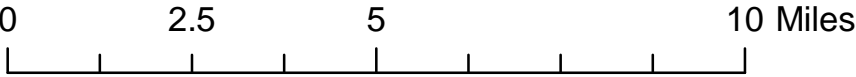
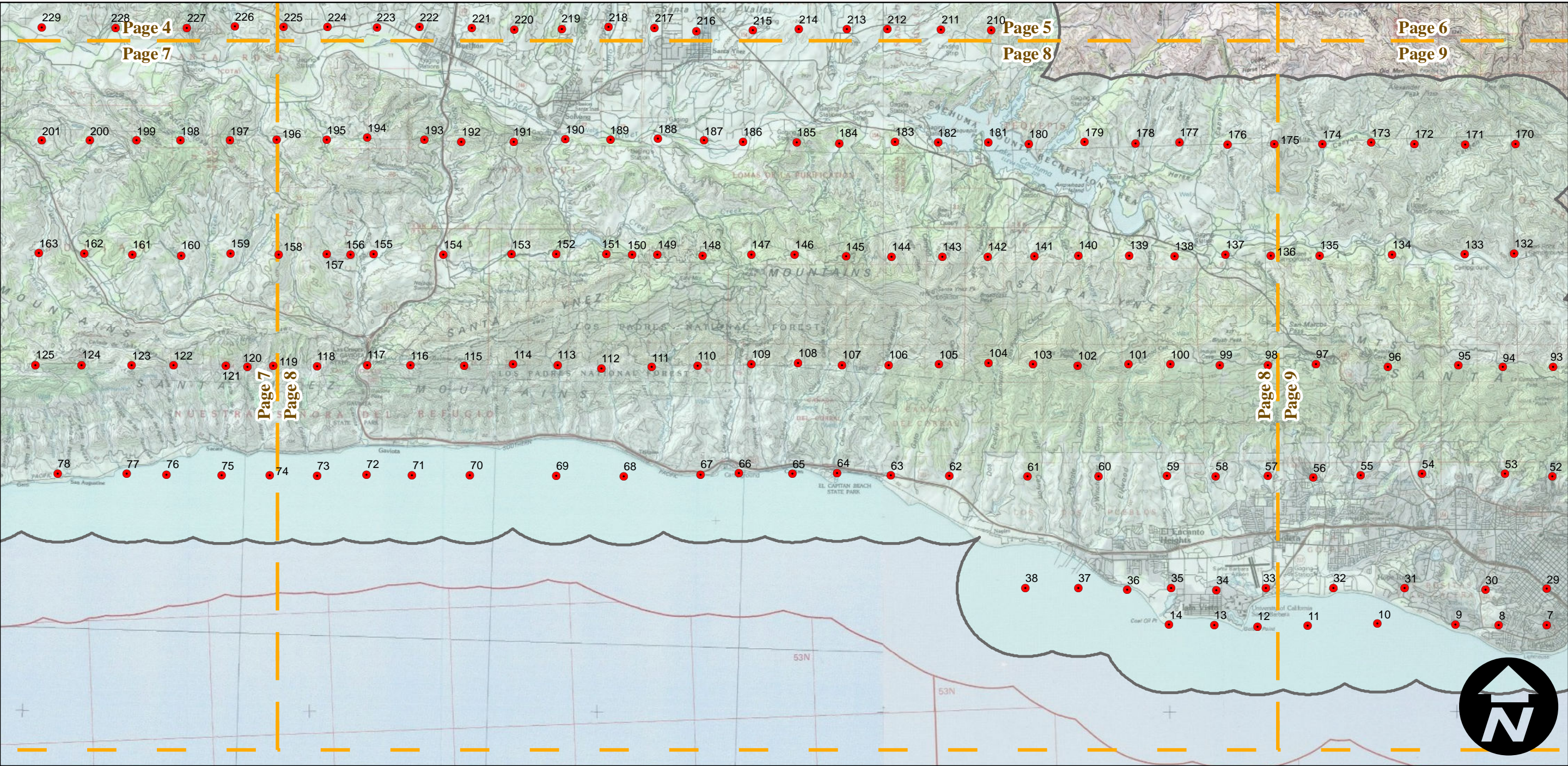
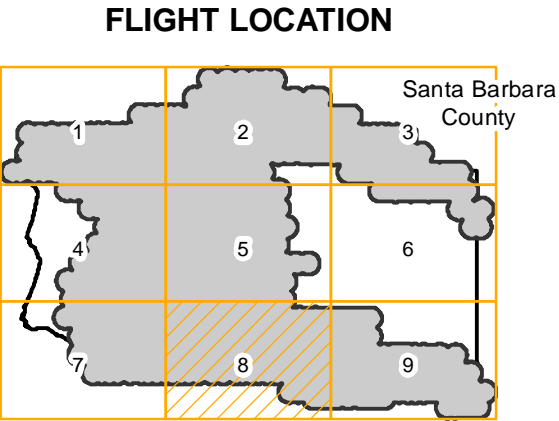


PW-SB-10

Counties: Santa Barbara
Flight date(s): 04-14-1997 to 8-22-1997
Scale: 1: 24,000
Overlap: 60%

Complete Metadata:
<http://www.library.ucsb.edu/mil/aerial-photography-tools>

Note: Flight flown using both Kodak and Agfa films after poor results using newly formulated Kodak aerial film. Clarity suffers on some frames due to problems with films.



PW-SB-10

Counties: Santa Barbara
Flight date(s): 04-14-1997 to 8-22-1997
Scale: 1: 24,000
Overlap: 60%

Complete Metadata:
<http://www.library.ucsb.edu/mil/aerial-photography-tools>

Note: Flight flown using both Kodak and Agfa films after poor results using newly formulated Kodak aerial film. Clarity suffers on some frames due to problems with films.

FLIGHT LOCATION

