

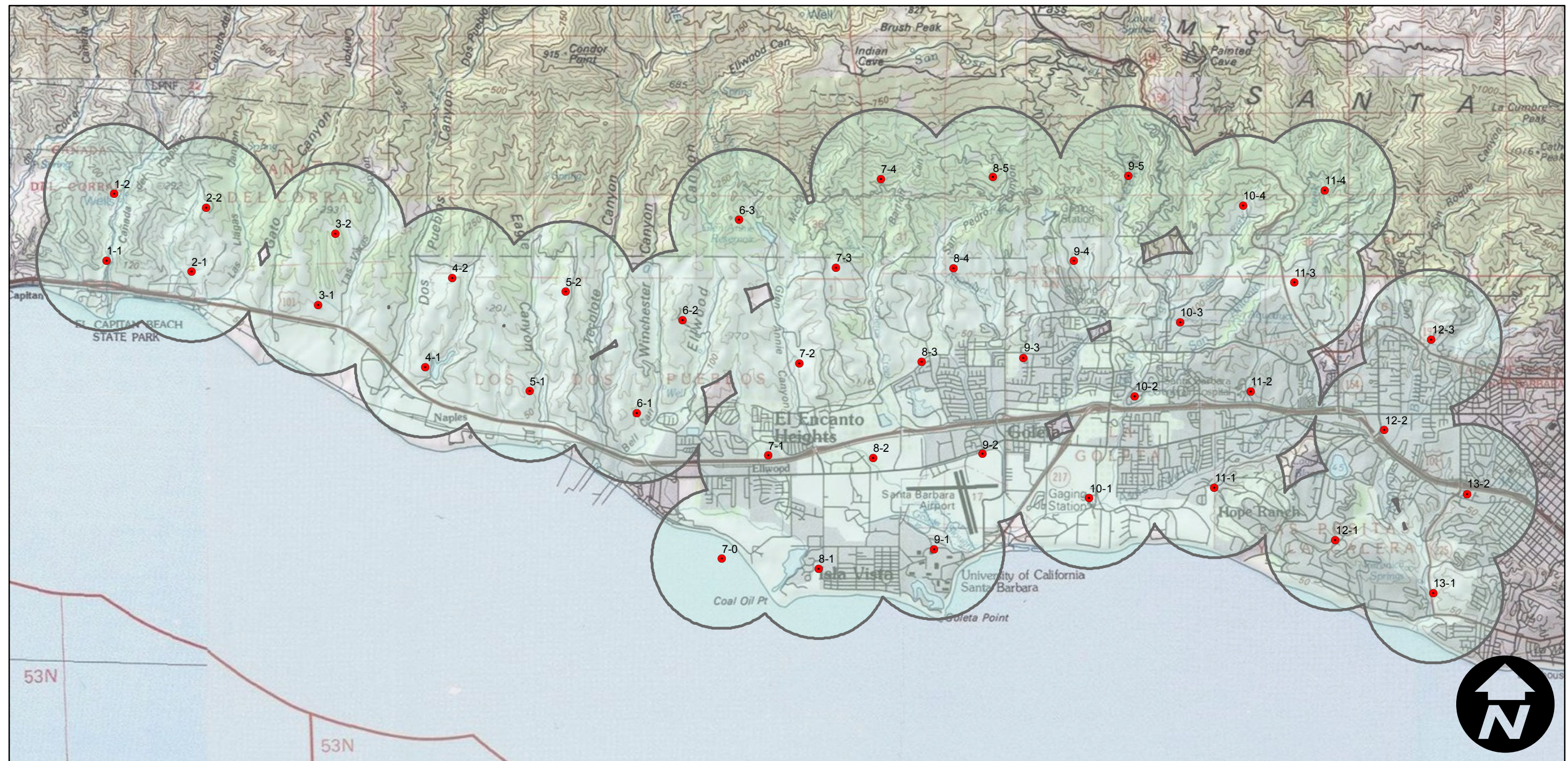
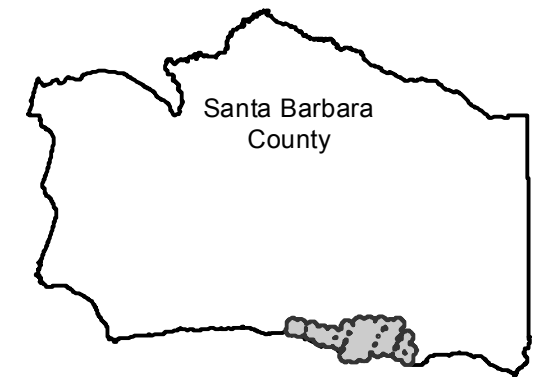
PW-14635

Counties: Santa Barbara  
Flight date(s): 01-04-1983  
Scale: 1: 12,000  
Overlap: 10%

Complete Metadata:  
<http://www.library.ucsb.edu/mil/aerial-photography-tools>

Note: Pictorial coverage of the Goleta Valley. Positive transparency enlargement of PW-14635-8-1 at ca. 1:7,200 of Coal Oil Point Reserve. Received July 1988 from Marine Science Institute-Natural Reserve System (UCSB).

## FLIGHT LOCATION



A horizontal scale bar with vertical tick marks. The labels are 0, 1.25, 2.5, and 5 Miles. There are 8 equal segments between 0 and 5 miles, with labels at 0, 1.25, 2.5, and 5 Miles.

Index to Aerial Photography  
Page 1 of 1

Scale of this index: 1:80,000