

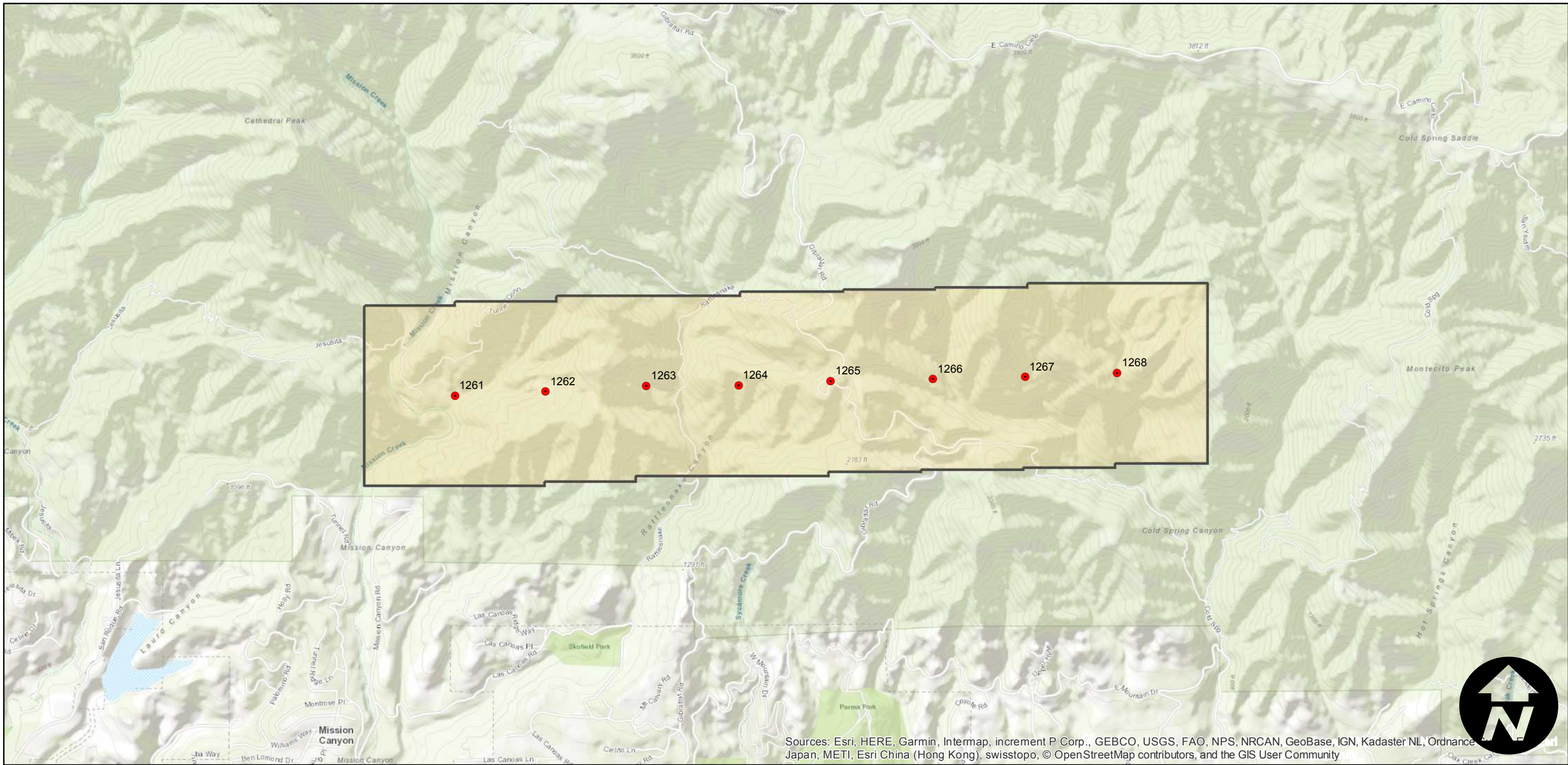
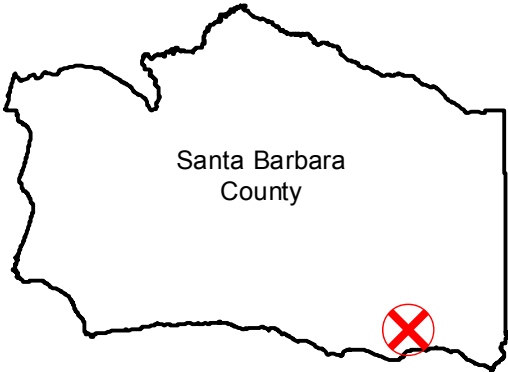
# Post-Tea-Fire-SBFlood (1:4.8K)

Counties: Santa Barbara  
Flight date(s): 11-08-2008  
Scale: 1:4,800  
Overlap: 20%

Complete Metadata:  
<https://www.library.ucsb.edu/src/airphotos/aerial-photography-information>

Note: Coverage of damage after the Tea Fire and vicinity, including Mission Canyon, Parma Park, and Westmont College. Gift of Santa Barbara County Flood Control District, 2012.

## FLIGHT LOCATION



0 0.25 0.5 1 Miles

Index to Aerial Photography  
Page 1 of 1

Scale of this index: 1:25,000