

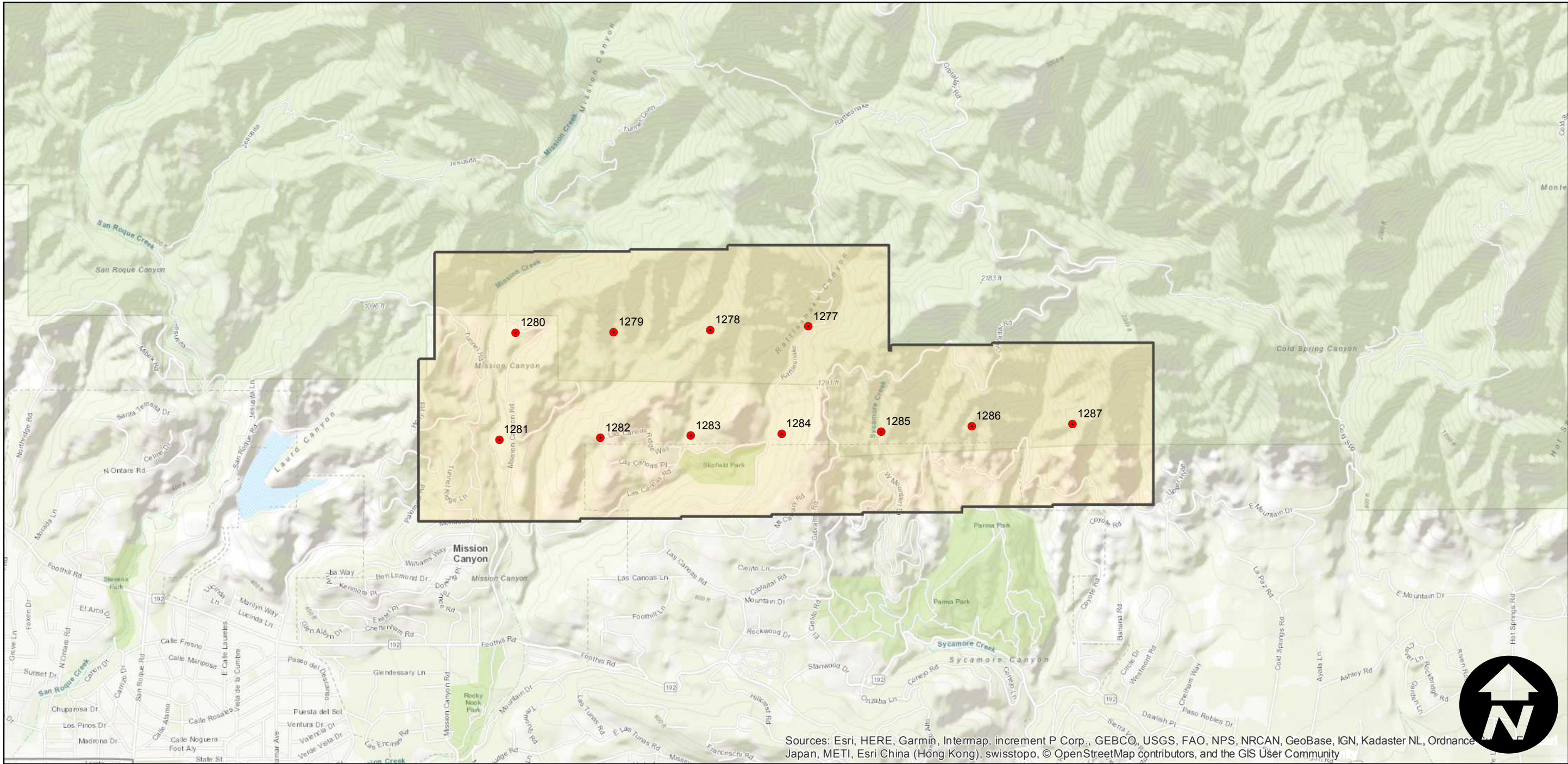
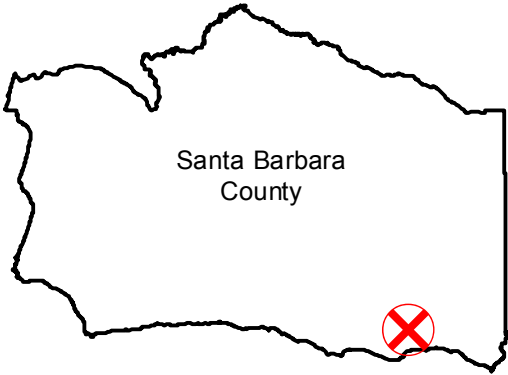
Post-Tea-Fire-SBFlood (1:4.3K)

Counties: Santa Barbara
Flight date(s): 11-08-2008
Scale: 1:4,300
Overlap: 20%

Complete Metadata:
<https://www.library.ucsb.edu/src/airphotos/aerial-photography-information>

Note: Coverage of damage after the Tea Fire and vicinity, including Mission Canyon, Parma Park, and Westmont College. Gift of Santa Barbara County Flood Control District, 2012.

FLIGHT LOCATION



0 0.25 0.5 1 Miles

Index to Aerial Photography
Page 1 of 1

Scale of this index: 1:25,000

Sources: Esri, HERE, Garmin, Intermap, increment P Corp., GEBCO, USGS, FAO, NPS, NRCAN, GeoBase, IGN, Kadaster NL, Ordnance Survey, Esri Japan, METI, Esri China (Hong Kong), swisstopo, © OpenStreetMap contributors, and the GIS User Community