

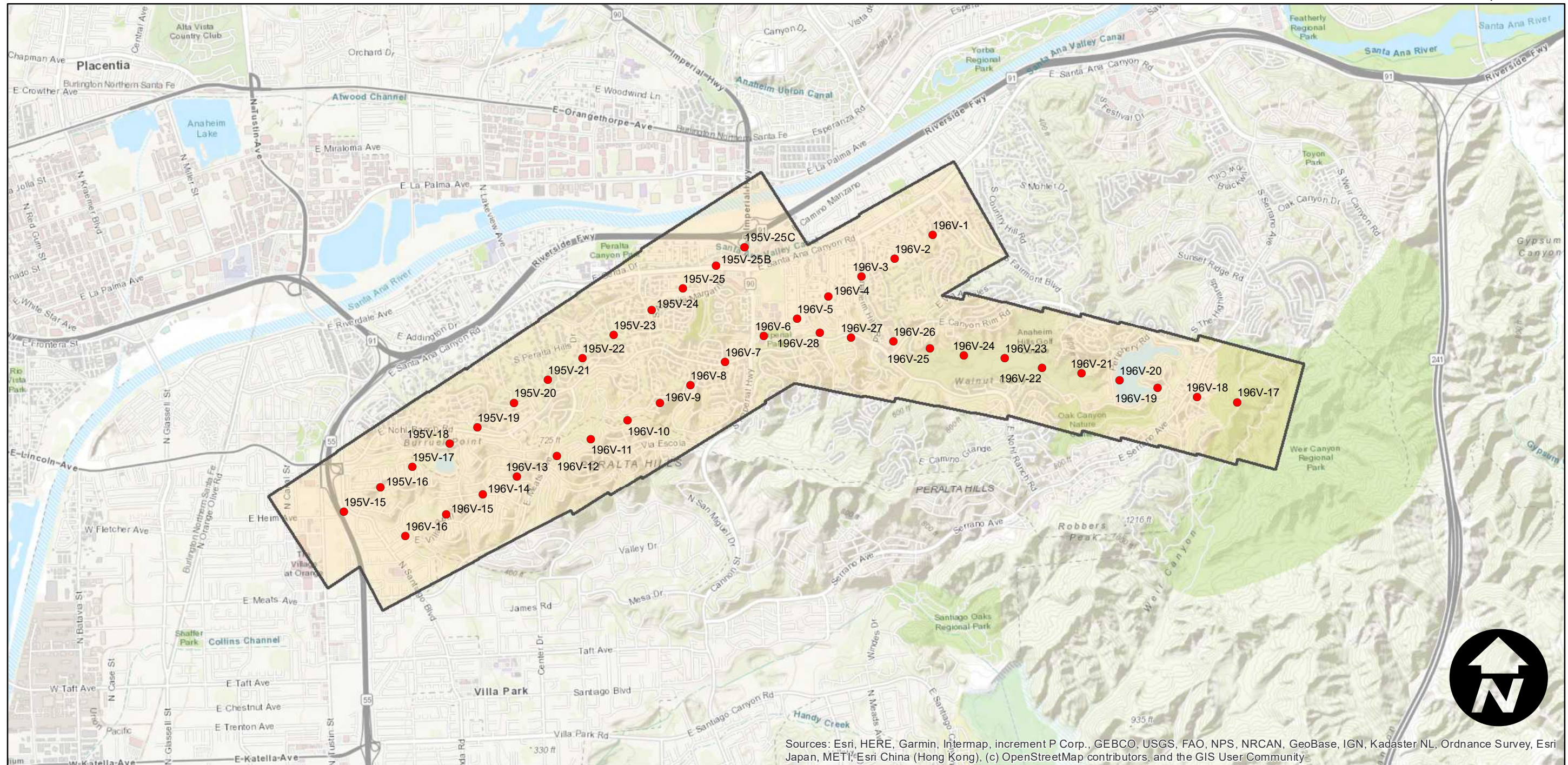
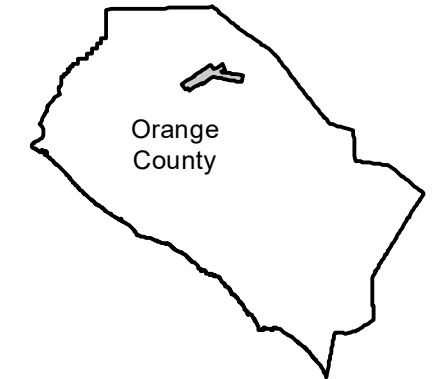
PAI-NOHL-63

Counties: Orange
Flight date(s): 01-04-1963 to 01-30-1963
Scale: 1:4,800
Overlap: 60%

Complete Metadata:
<https://www.library.ucsb.edu/src/airphotos/aerial-photography-information>

Note: Imagery of The historic Nohl Ranch area. Primarily located in the neighborhood of Anaheim Hills with coverage extending into portions of Orange, Anaheim, and Peralta Hills, California. PAI-195V frames 26 to 40 do not appear on this index, but cover the approximate area of PAI-196V frames 1 to 16

FLIGHT LOCATION



Sources: Esri, HERE, Garmin, Intermap, increment P Corp., GEBCO, USGS, FAO, NPS, NRCAN, GeoBase, IGN, Kadaster NL, Ordnance Survey, Esri Japan, METI, Esri China (Hong Kong), (c) OpenStreetMap contributors, and the GIS User Community

