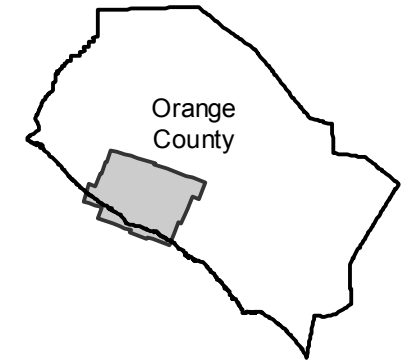


PAI-Newport-58

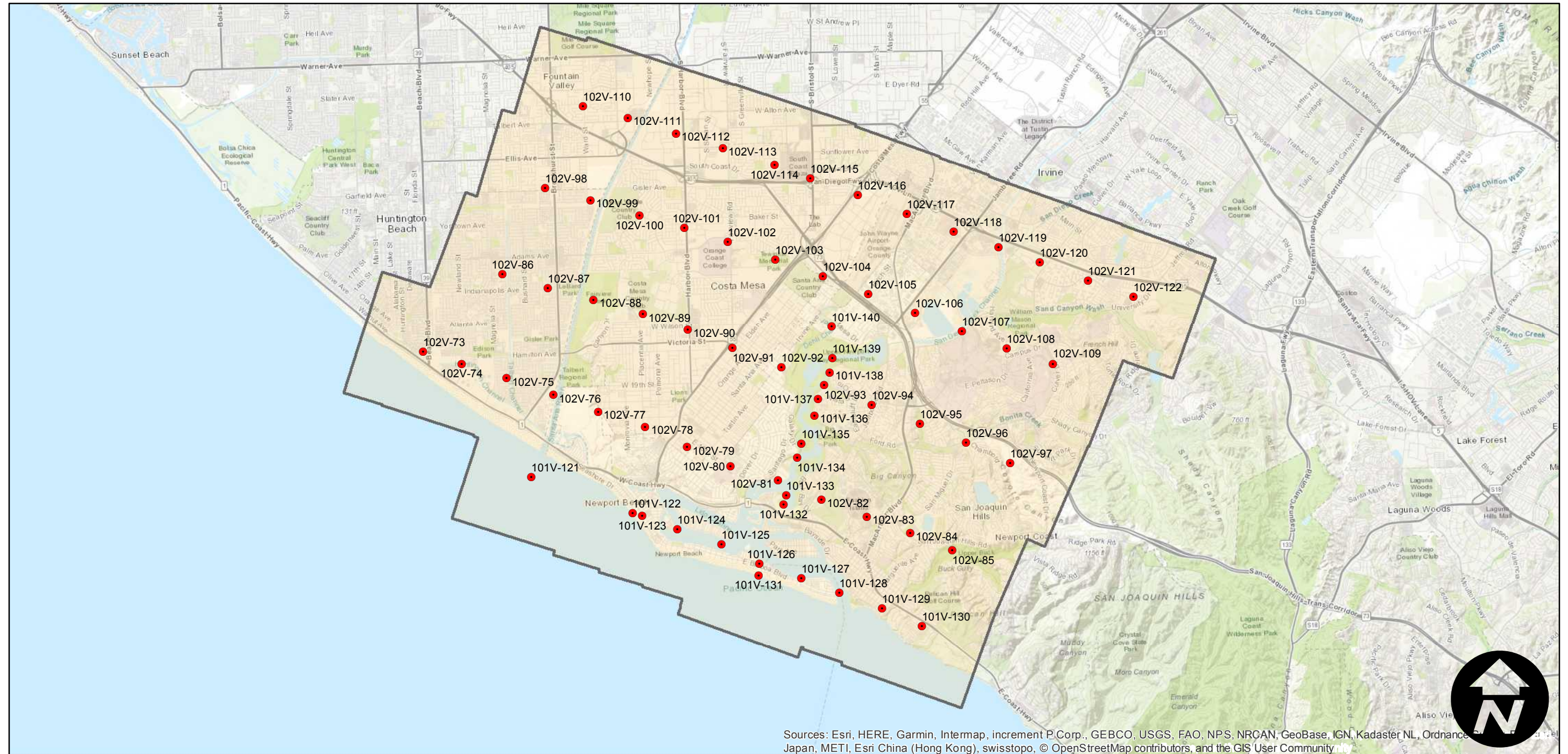
Counties: Orange
Flight date(s): 11-17-1958 to 01-21-1959
Scale: 1:14,400
Overlap: 60-95%

Note: Coverage of Newport Beach, Costa Mesa, Fountain Valley, San Joaquin Hills, and vicinity.

FLIGHT LOCATION



Complete Metadata:
<https://www.library.ucsb.edu/src/airphotos/aerial-photography-information>



Sources: Esri, HERE, Garmin, Intermap, increment P Corp., GEBCO, USGS, FAO, NPS, NRCAN, GeoBase, IGN, Kadaster NL, Ordnance Survey, Esri Japan, METI, Esri China (Hong Kong), swisstopo, © OpenStreetMap contributors, and the GIS User Community

