

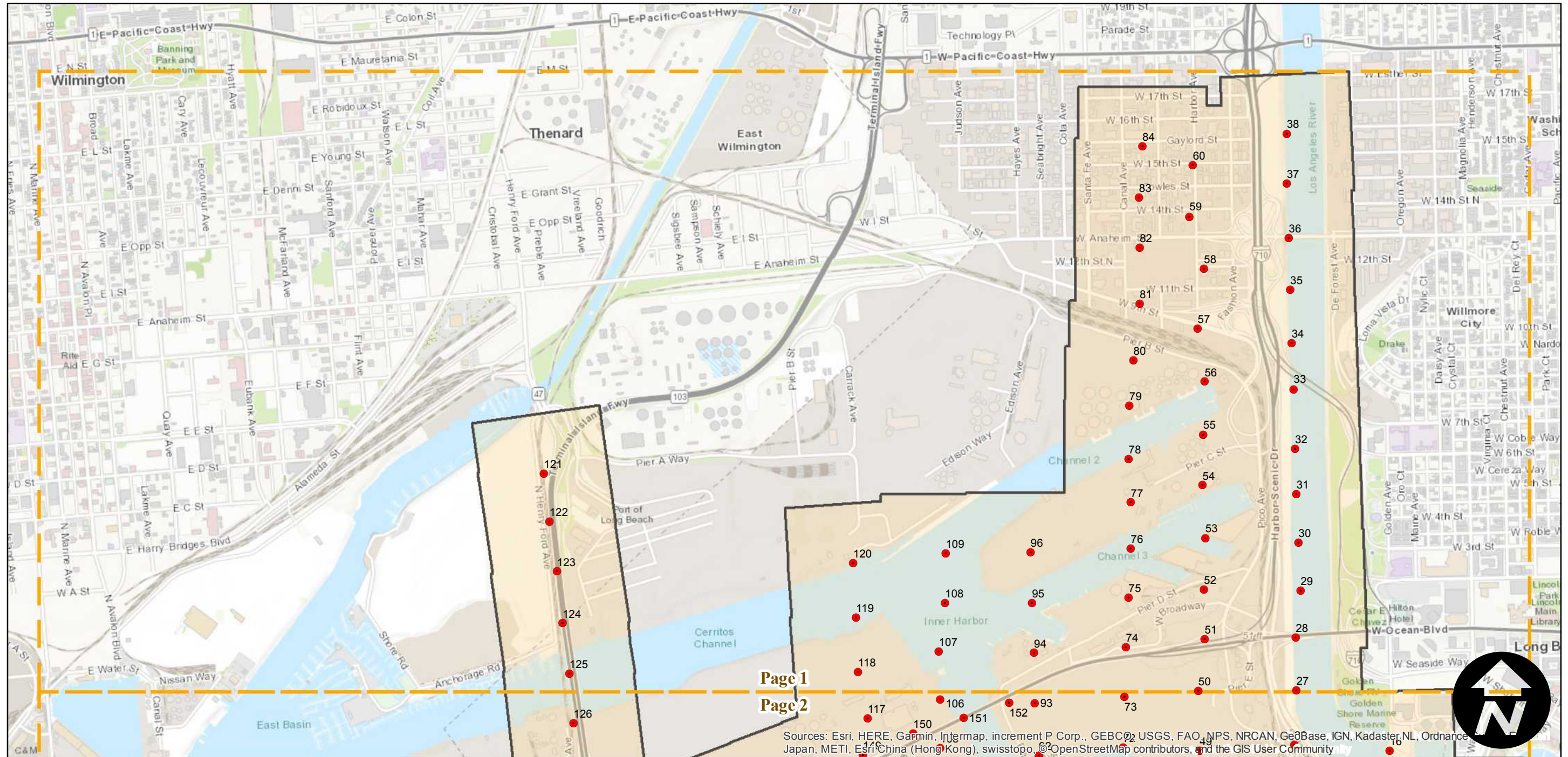
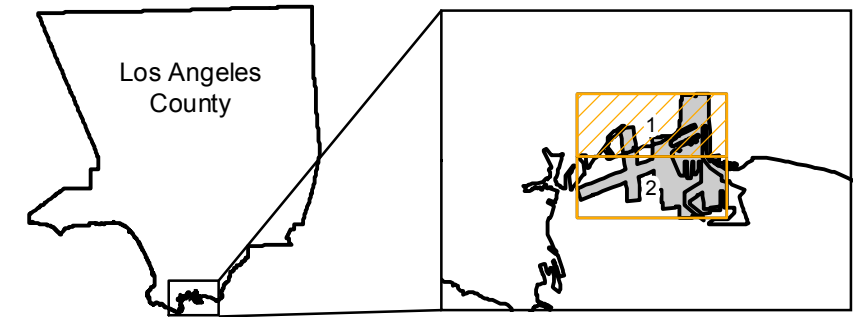
PAI-75V

Counties: Los Angeles
Flight date(s): 08-03-1956
Scale: 1:2,400
Overlap: 60-80%

Complete Metadata:
<https://www.library.ucsb.edu/src/airphotos/aerial-photography-information>

Note: Port of Long Beach and vicinity.

FLIGHT LOCATION



Sources: Esri, HERE, Garmin, Intermap, increment P Corp., GEBCO, USGS, FAO, NPS, NRCAN, GeoBase, IGN, Kadaster NL, Ordnance Survey, Esri China (Hong Kong), Swisstopo, ©OpenStreetMap contributors, and the GIS User Community

0 0.2 0.4 0.8 Miles

Index to Aerial Photography
Page 1 of 2

Scale of this index: 1:17,500

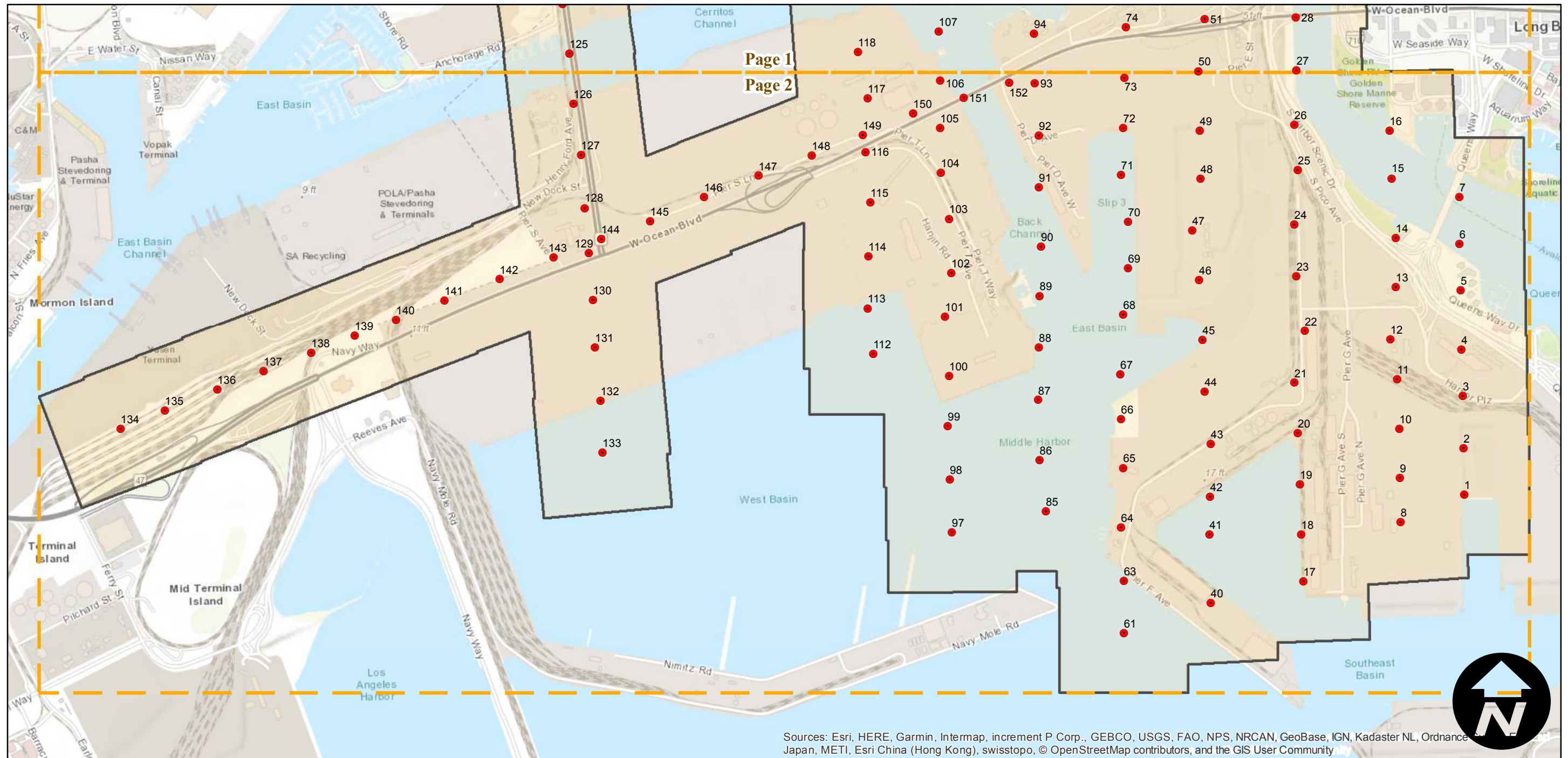
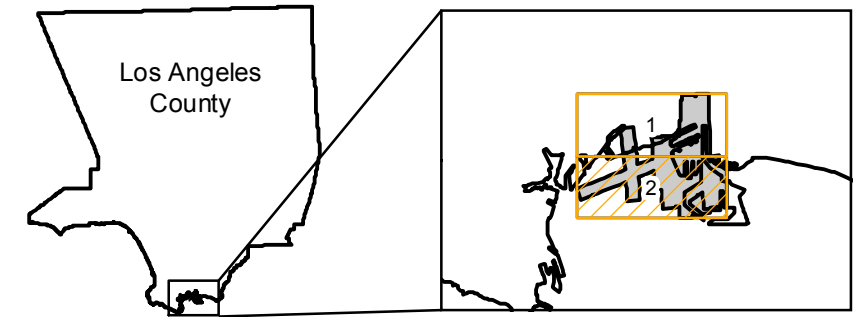
PAI-75V

Counties: Los Angeles
Flight date(s): 08-03-1956
Scale: 1:2,400
Overlap: 60-80%

Complete Metadata:
<https://www.library.ucsb.edu/src/airphotos/aerial-photography-information>

Note: Port of Long Beach and vicinity.

FLIGHT LOCATION



Sources: Esri, HERE, Garmin, Intermap, increment P Corp., GEBCO, USGS, FAO, NPS, NRCAN, GeoBase, IGN, Kadaster NL, Ordnance Survey, Esri Japan, METI, Esri China (Hong Kong), swisstopo, © OpenStreetMap contributors, and the GIS User Community

0 0.2 0.4 0.8 Miles

Index to Aerial Photography
Page 2 of 2

Scale of this index: 1:17,500