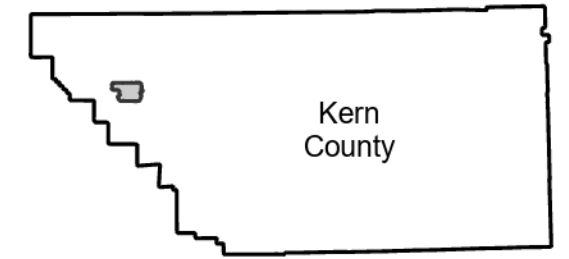


# PAI-270V-1

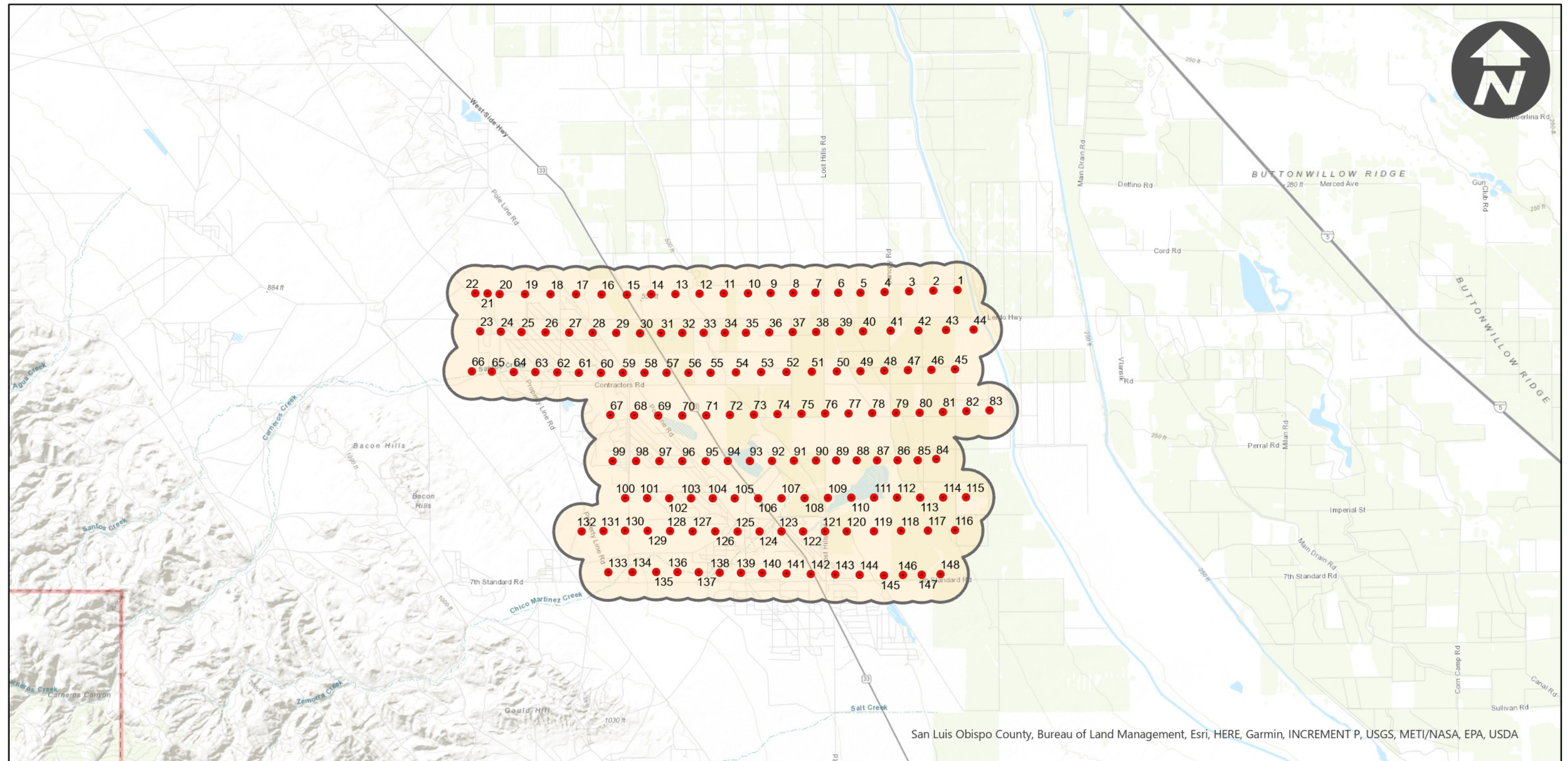
## FLIGHT LOCATION

Counties: Kern  
Flight date(s): 05-13-1966  
Scale: 1:6,000  
Overlap: 60%

Note: Imagery of the South Belridge Oil Field. A large oil field in the San Joaquin Valley, California. An area in northwestern Kern County about forty miles west of Bakersfield. Frame numbers 270V-1 through 270V-148.



Complete Metadata:  
<https://www.library.ucsb.edu/src/airphotos/aerial-photography-information>



San Luis Obispo County, Bureau of Land Management, Esri, HERE, Garmin, INCREMENT P, USGS, METI/NASA, EPA, USDA

