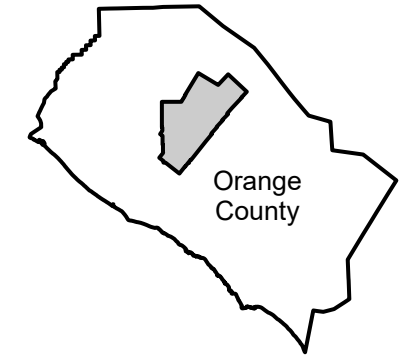


PAI-253V-5

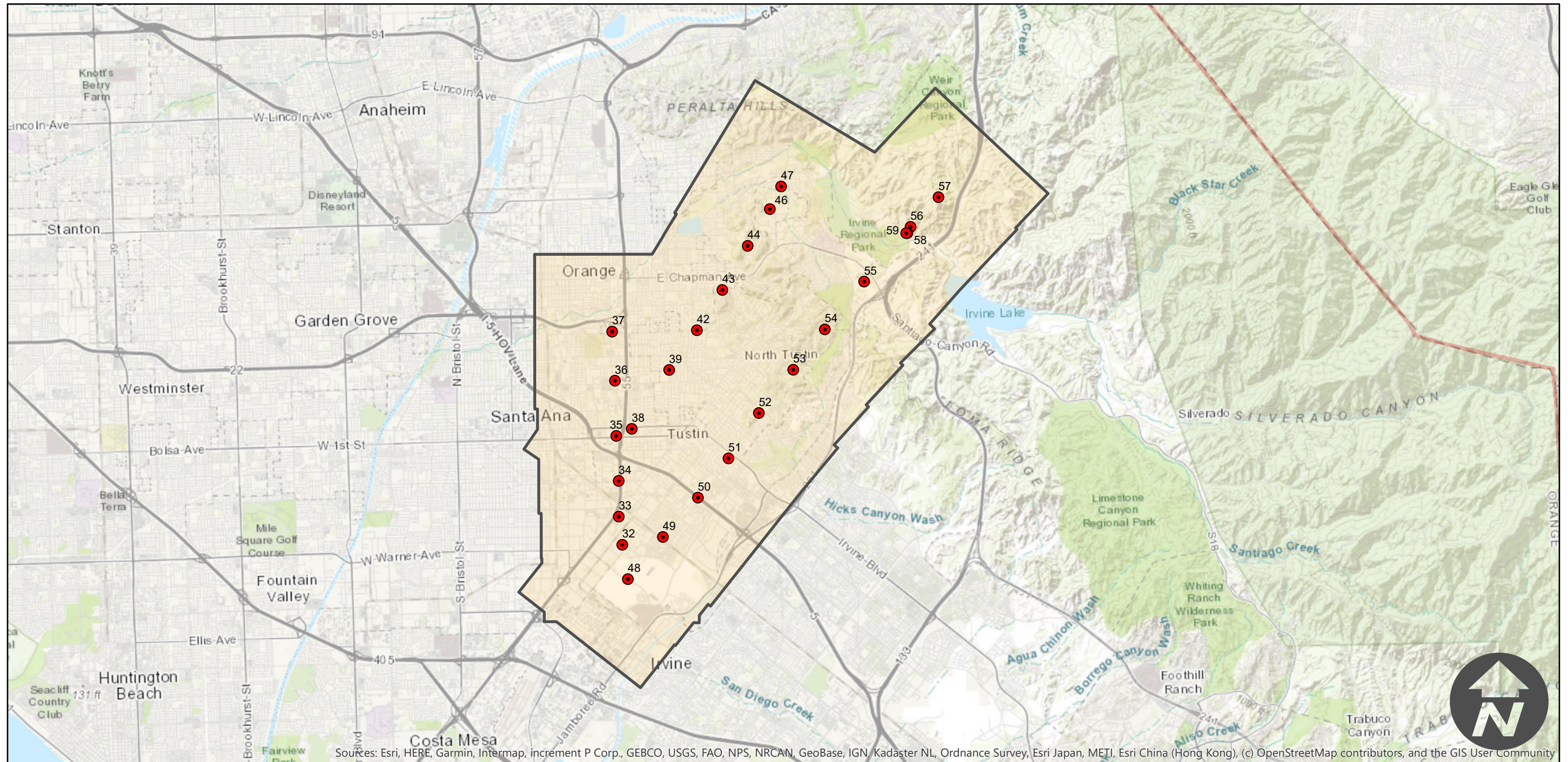
Counties: Orange
Flight date(s): 03-29-1965
Scale: 1:19,200
Overlap: 60%

Note: Imagery of Tustin, CA. Covering an area from Irvine northward through the city of Orange and northwest to the Peralta Hills.

FLIGHT LOCATION



Complete Metadata:
<https://www.library.ucsb.edu/src/airphotos/aerial-photography-information>



Sources: Esri, HERE, Garmin, Intermap, increment P Corp., GEBCO, USGS, FAO, NPS, NRCAN, GeoBase, IGN, Kadaster NL, Ordnance Survey, Esri Japan, METI, Esri China (Hong Kong), (c) OpenStreetMap contributors, and the GIS User Community

