

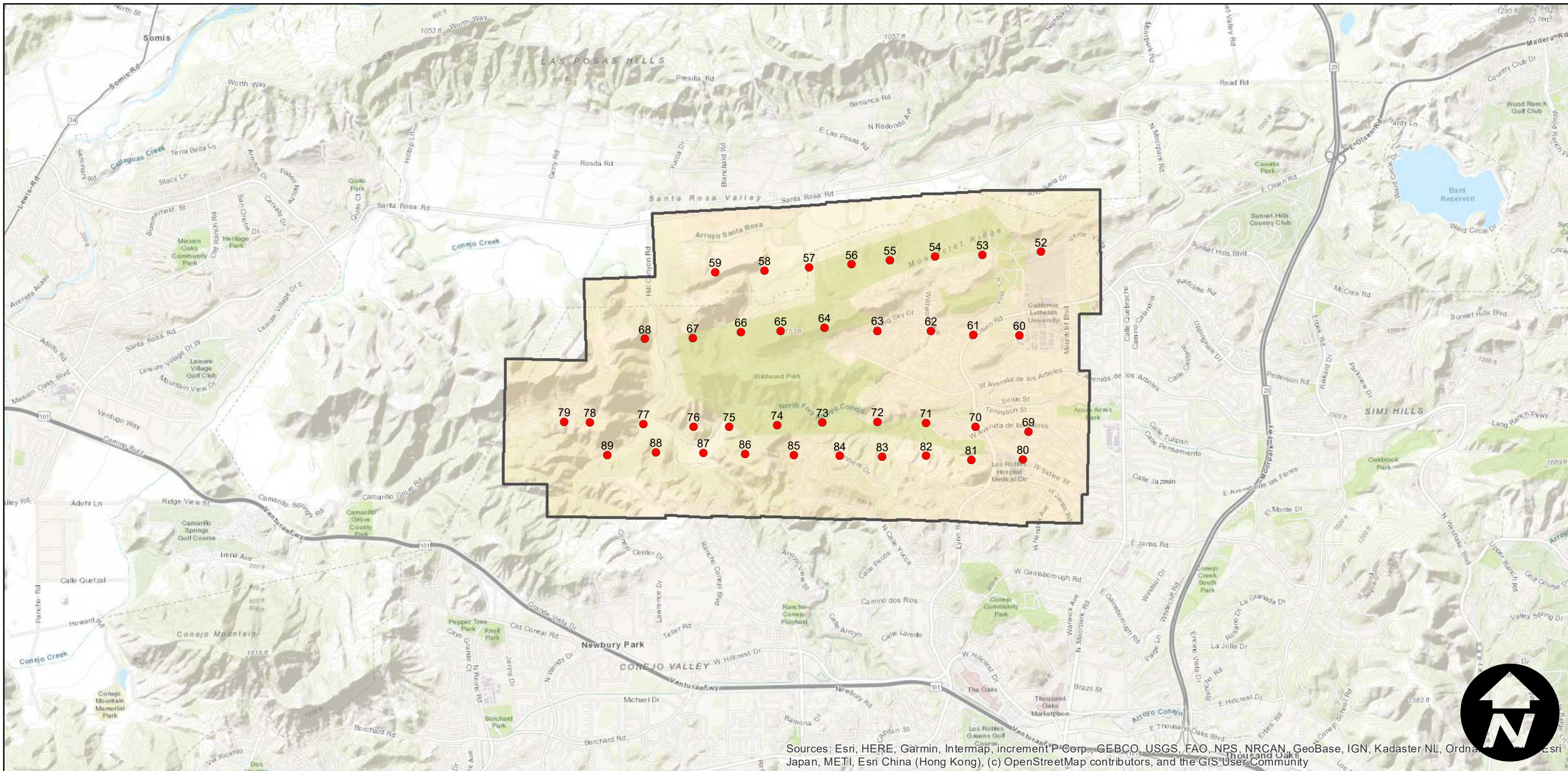
PAI-233V-5

Counties: Ventura  
Flight date(s): 01-08-1964  
Scale: 1:6,000  
Overlap: 60%

Complete Metadata:  
<https://www.library.ucsb.edu/src/airphotos/aerial-photography-information>

Note: Imagery covers the "North Mesa area" of Newbury Park, California. Frame numbers 233V-52 through 233V-89. Imagery acquired in 1986.

FLIGHT LOCATION



0 0.5 1 2 Miles

Index to Aerial Photography  
Page 1 of 1

Scale of this index: 1:50,000