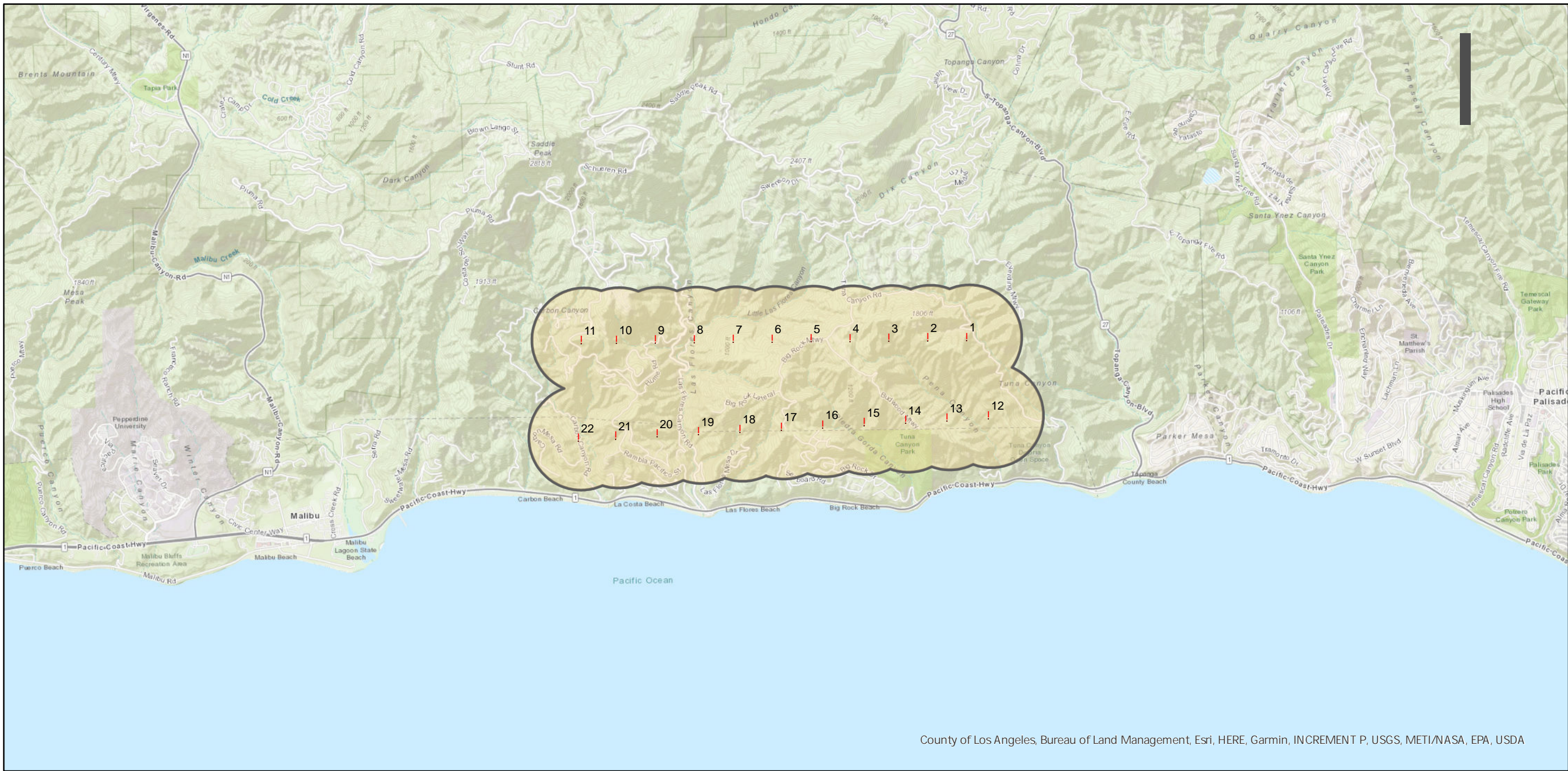


IMC-127 (7.2K)

Counties: Los Angeles
Flight date(s): 08-12-1959
Scale: 1:7,200
Overlap: 60%

Complete Metadata:
<https://www.library.ucsb.edu/src/airphotos/aerial-photography-information>

Note: Two scale coverages, with the 7.2k scale coverage running from Carbon Canyon to Tuna Canyon. While the 3.6k scale coverage is centered on Las Flores Canyon, and extends from Las Flores on the coast to La Costa Beach. Negatives filed on roll IMC-124. Imagery acquired 1986.



County of Los Angeles, Bureau of Land Management, Esri, HERE, Garmin, INCREMENT P, USGS, METI/NASA, EPA, USDA

0 0.75 1.5 3 Miles

Index to Aerial Photography
Page 1 of 1

Scale of this index: 1:50,000