

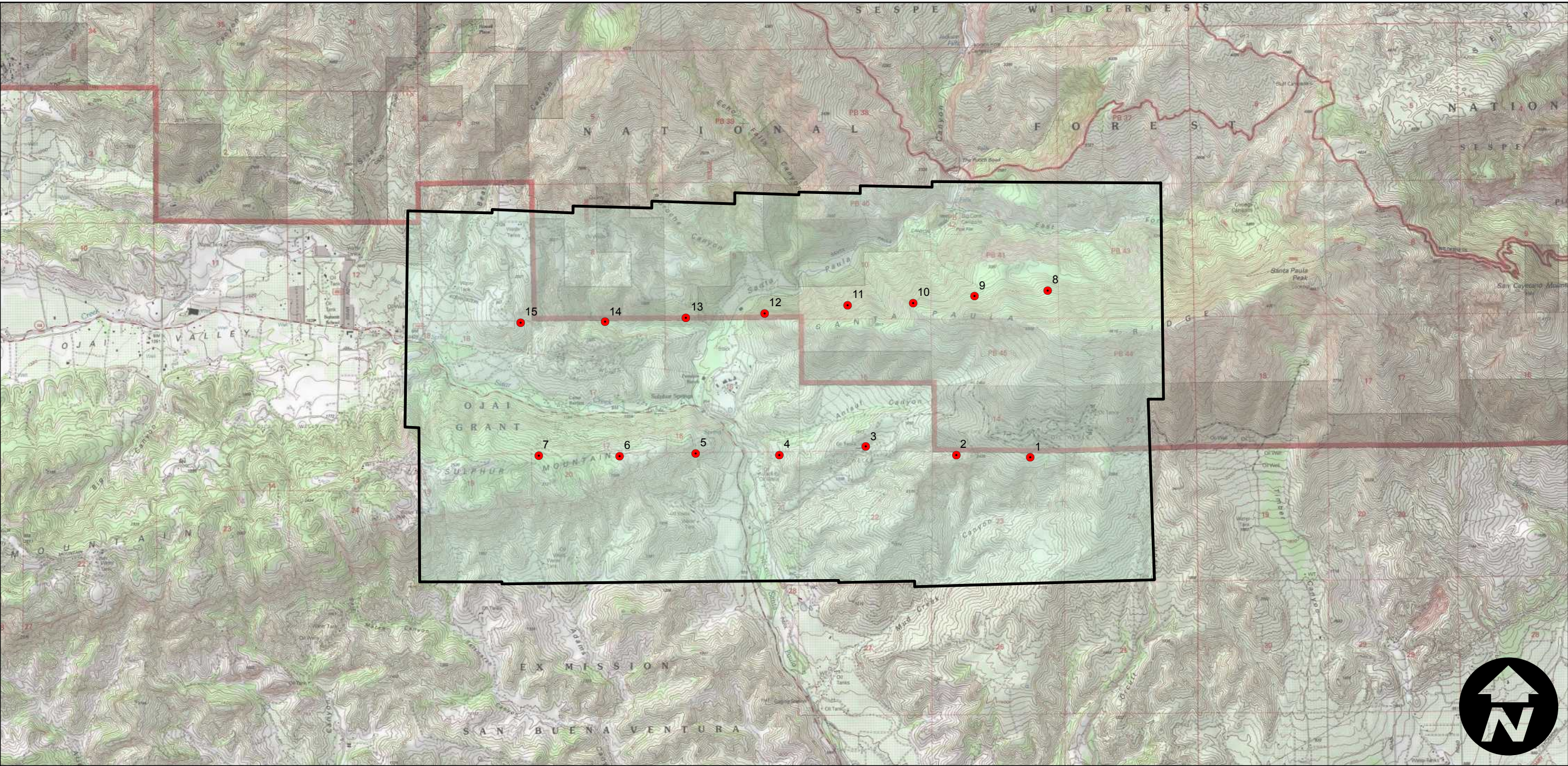
HB-RW

Counties: Ventura
Flight date(s): 01-18-1971
Scale: 1:12,000
Overlap: 60%

Complete Metadata:
<http://www.library.ucsb.edu/mil/aerial-photography-tools>

Note: Area north of Santa Paula: Sulfur Mountain to Santa Paula Ridge. Vicinity of State Route 150 and Santa Paula Creek, including Steckel Park, Sulfur Springs, and Saint Thomas Aquinas College. Photograph were taken with colorinfrared film but prints are black and white. Area of flight is identical to HB-RZ.

FLIGHT LOCATION



0 1.5 3 Miles

Scale of this index: 1:50,000