

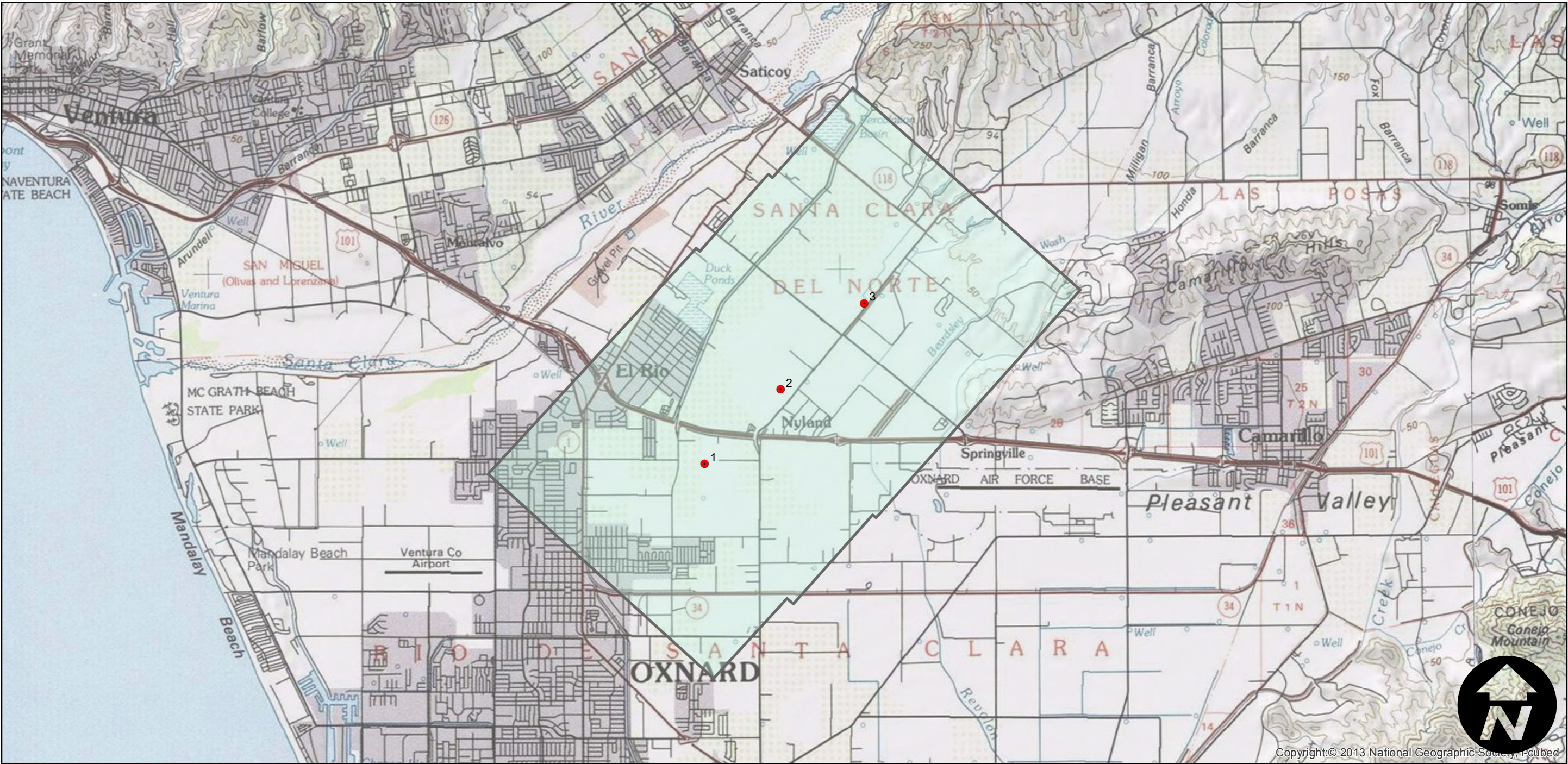
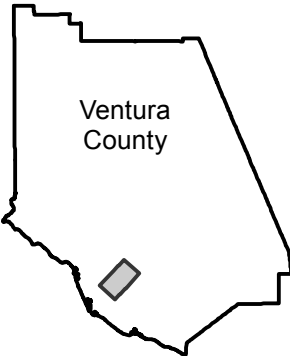
# HB-QO (1:24K)

Counties: Ventura  
Flight date(s): 03-02-1970  
Scale: 1:24,000  
Overlap: 60%

Complete Metadata:  
<http://www.library.ucsb.edu/mil/aerial-photography-tools>

Note: El Rio and Nyeland Acres: vicinity of U.S. 101 and Santa Clara Avenue. Photograph numbers 1 through 3 are 1:24,000; numbers 4 through 12 are 1:12,000.

## FLIGHT LOCATION



0 1 2 4 Miles

Index to Aerial Photography  
Page 1 of 1

Scale of this index: 1:75,000