

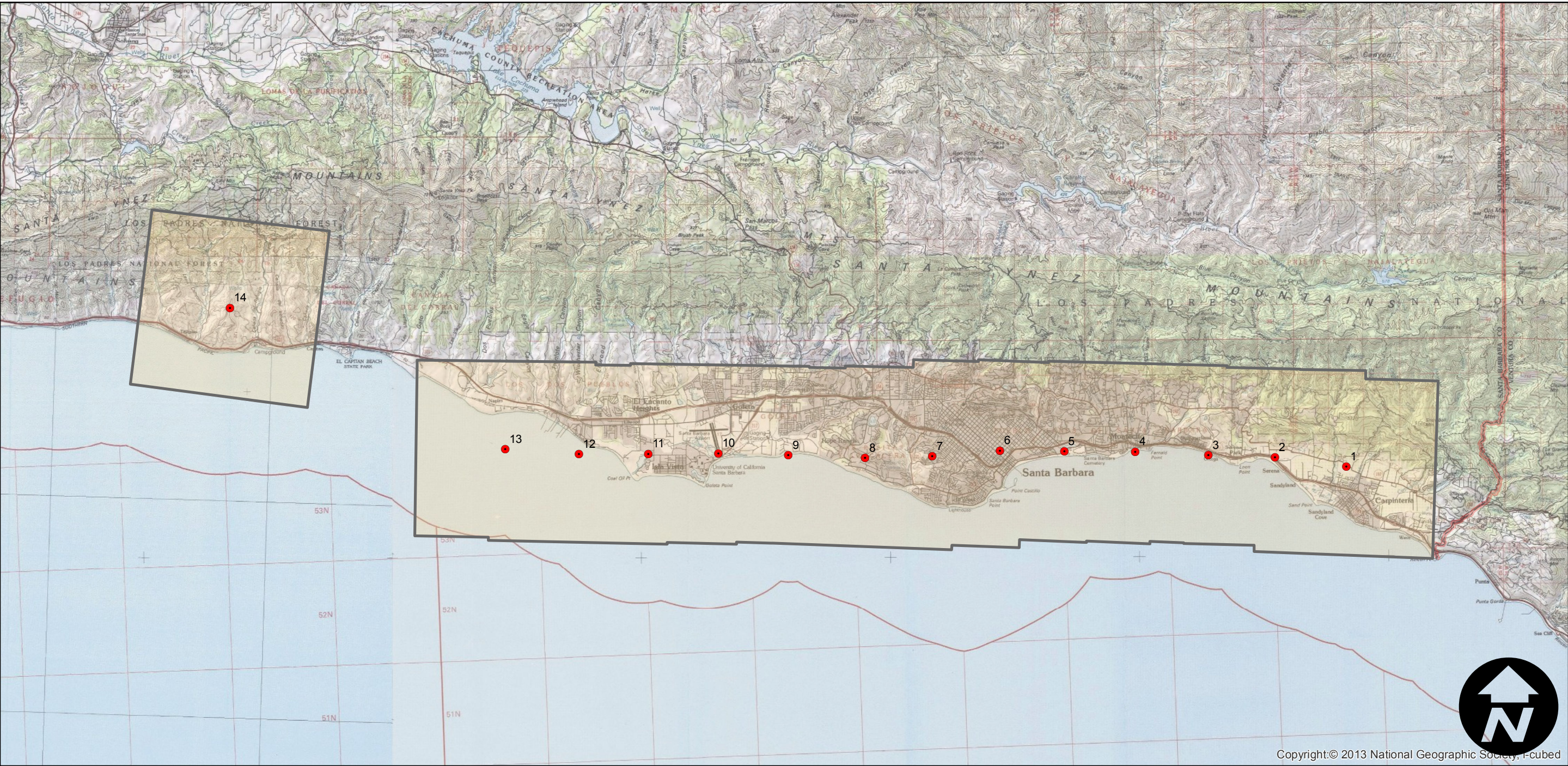
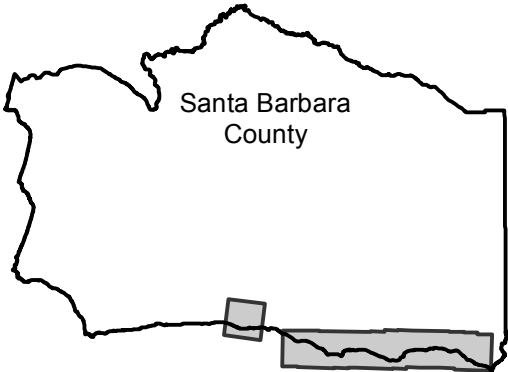
# HB-QG

Counties: Santa Barbara  
Flight date(s): 12-02-1969  
Scale: 1:36,000  
Overlap: 60%

Complete Metadata:  
<http://www.library.ucsb.edu/mil/aerial-photography-tools>

Note: Coastline from Naples to Carpinteria; frame 14 covers Tajiguas and Refugio Beach State Park.

## FLIGHT LOCATION



0 3 6 12 Miles

Index to Aerial Photography  
Page 1 of 1

Scale of this index: 1:190,000