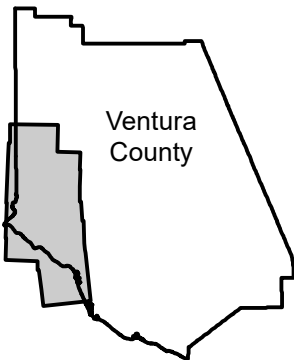


HB-NY

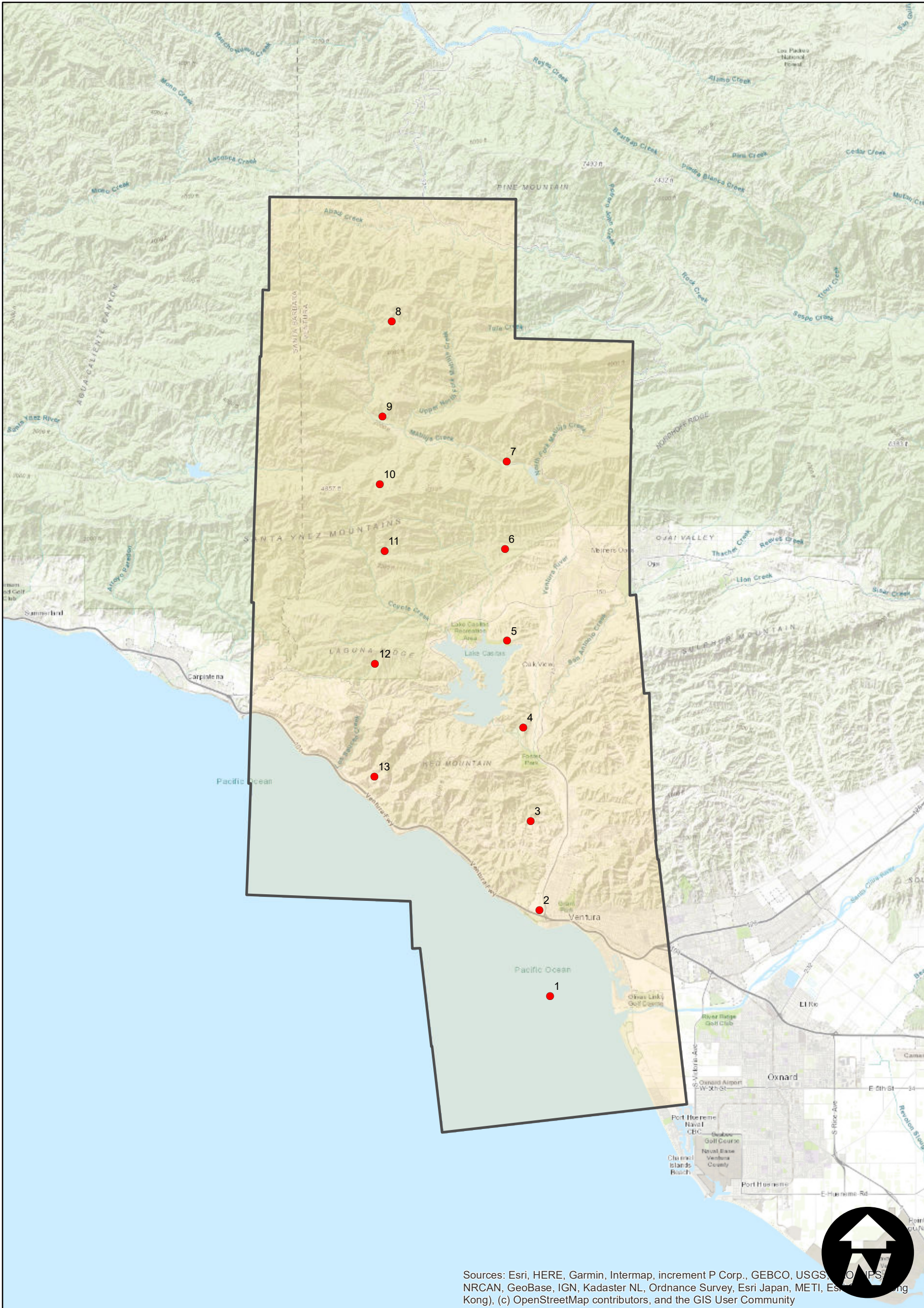
Counties: Ventura
Flight date: 2-1-1969
Scale: 1:57,996
Overlap: 60%

Note: The Ventura area. From Channel Islands Harbor in Oxnard westward up to Carpinteria on the coast and northward following highway 33 inland past Lake Casitas and up to Pine Mountain.

FLIGHT LOCATION



Complete Metadata:
<http://www.library.ucsb.edu/src/airphotos/aerial-photography-information>



Sources: Esri, HERE, Garmin, Intermap, increment P Corp., GEBCO, USGS, NOAA, NRCAN, GeoBase, IGN, Kadaster NL, Ordnance Survey, Esri Japan, METI, Esri (Hong Kong), (c) OpenStreetMap contributors, and the GIS User Community