

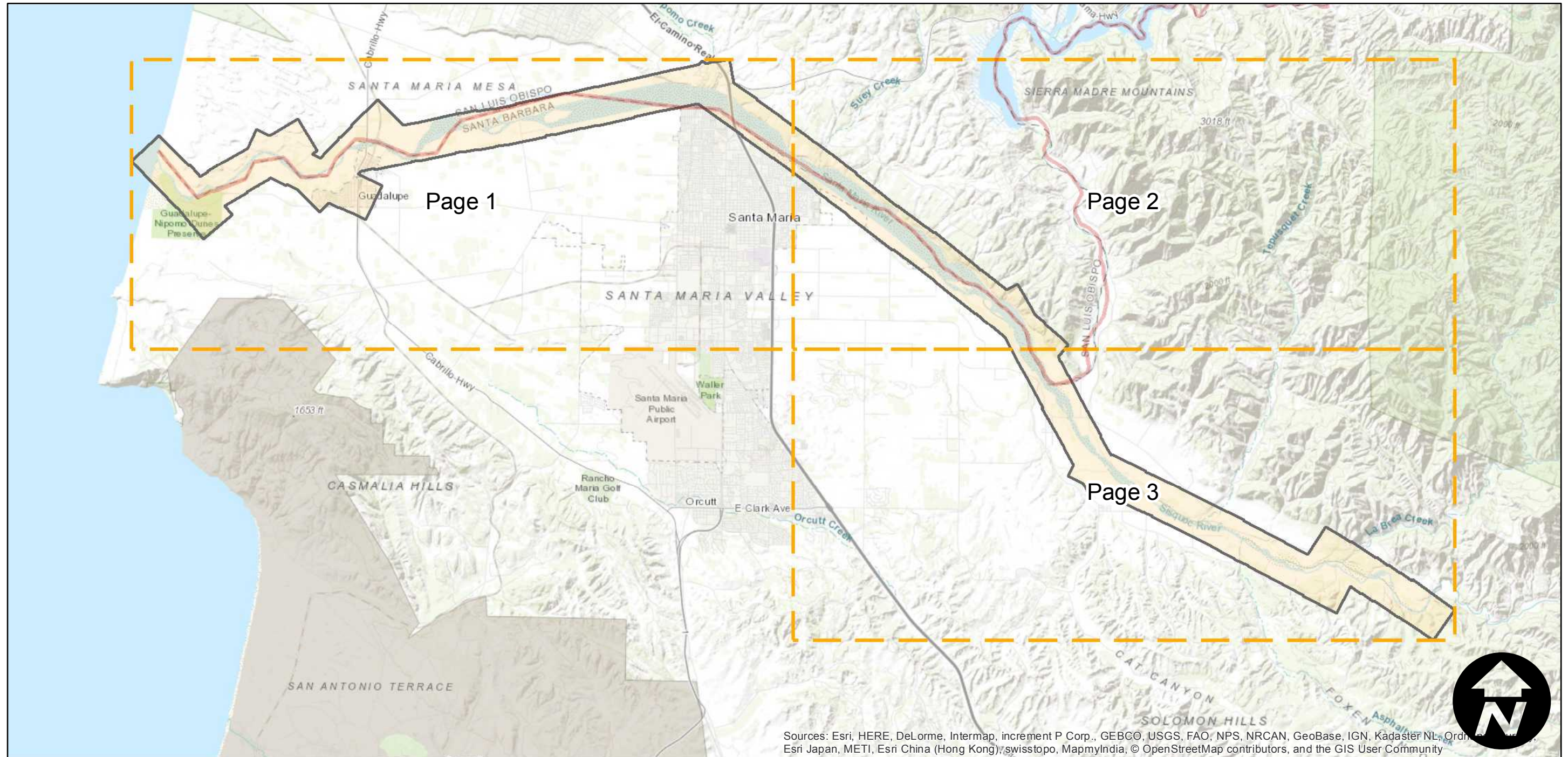
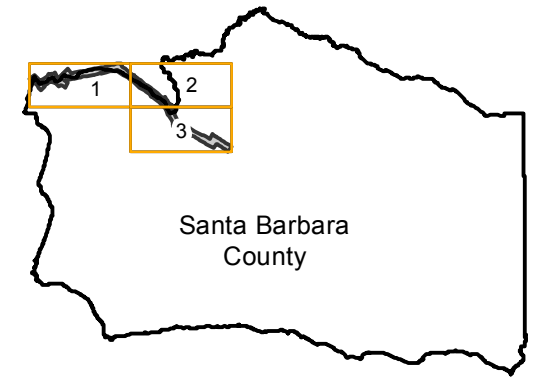
# HB-JK

Counties: Santa Barbara, San Luis Obispo  
Flight date(s): 12-16-1966  
Scale: 1:6000  
Overlap: 60%

Complete Metadata:  
<http://www.library.ucsb.edu/map-imagery-lab/aerial-photography-information>

Note: Santa Maria River from Pacific Ocean to vicinity of Foxen Canyon Road

## FLIGHT LOCATION



Sources: Esri, HERE, DeLorme, Intermap, increment P Corp., GEBCO, USGS, FAO, NPS, NRCAN, GeoBase, IGN, Kadaster NL, Ordnance Survey, Esri Japan, METI, Esri China (Hong Kong), swisstopo, MapmyIndia, © OpenStreetMap contributors, and the GIS User Community

0 2 4 8 Miles

Index to Aerial Photography  
Page Key

Scale of this index: 1:140,000



# HB-JK

Counties: Santa Barbara, San Luis Obispo

Flight date(s): 12-16-1966

Scale: 1:6000

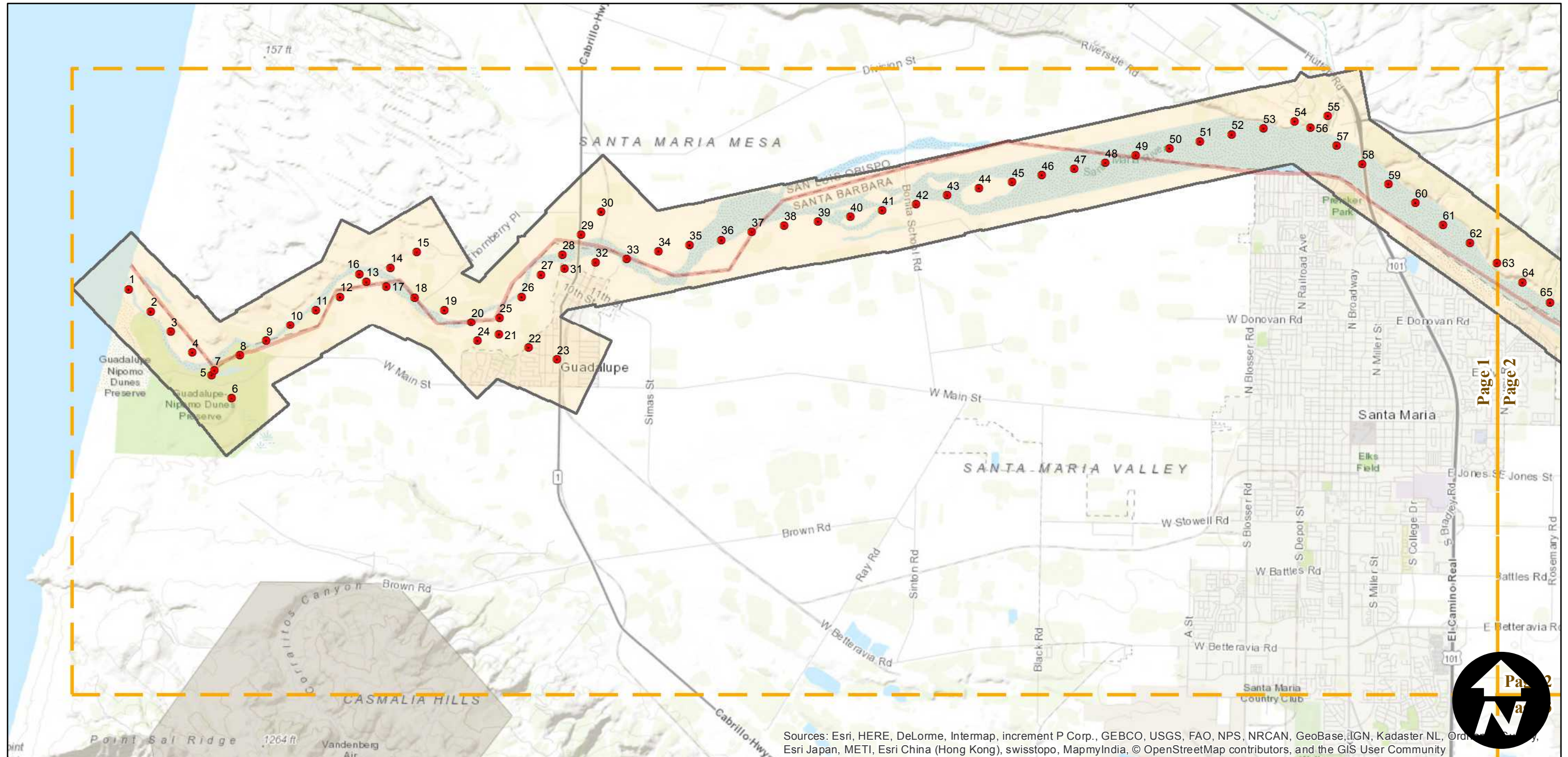
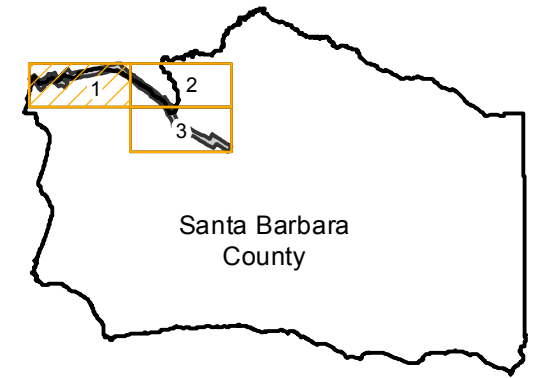
Overlap: 60%

Complete Metadata:

<http://www.library.ucsb.edu/map-imagery-lab/aerial-photography-information>

Note: Santa Maria River from Pacific Ocean to vicinity of Foxen Canyon Road

## FLIGHT LOCATION



Sources: Esri, HERE, DeLorme, Intermap, increment P Corp., GEBCO, USGS, FAO, NPS, NRCAN, GeoBase, IGN, Kadaster NL, Ordnance Survey, Esri Japan, METI, Esri China (Hong Kong), swisstopo, MapmyIndia, © OpenStreetMap contributors, and the GIS User Community

0 1 2 4 Miles

Index to Aerial Photography  
Page 1 of 3

Scale of this index: 1:65,000



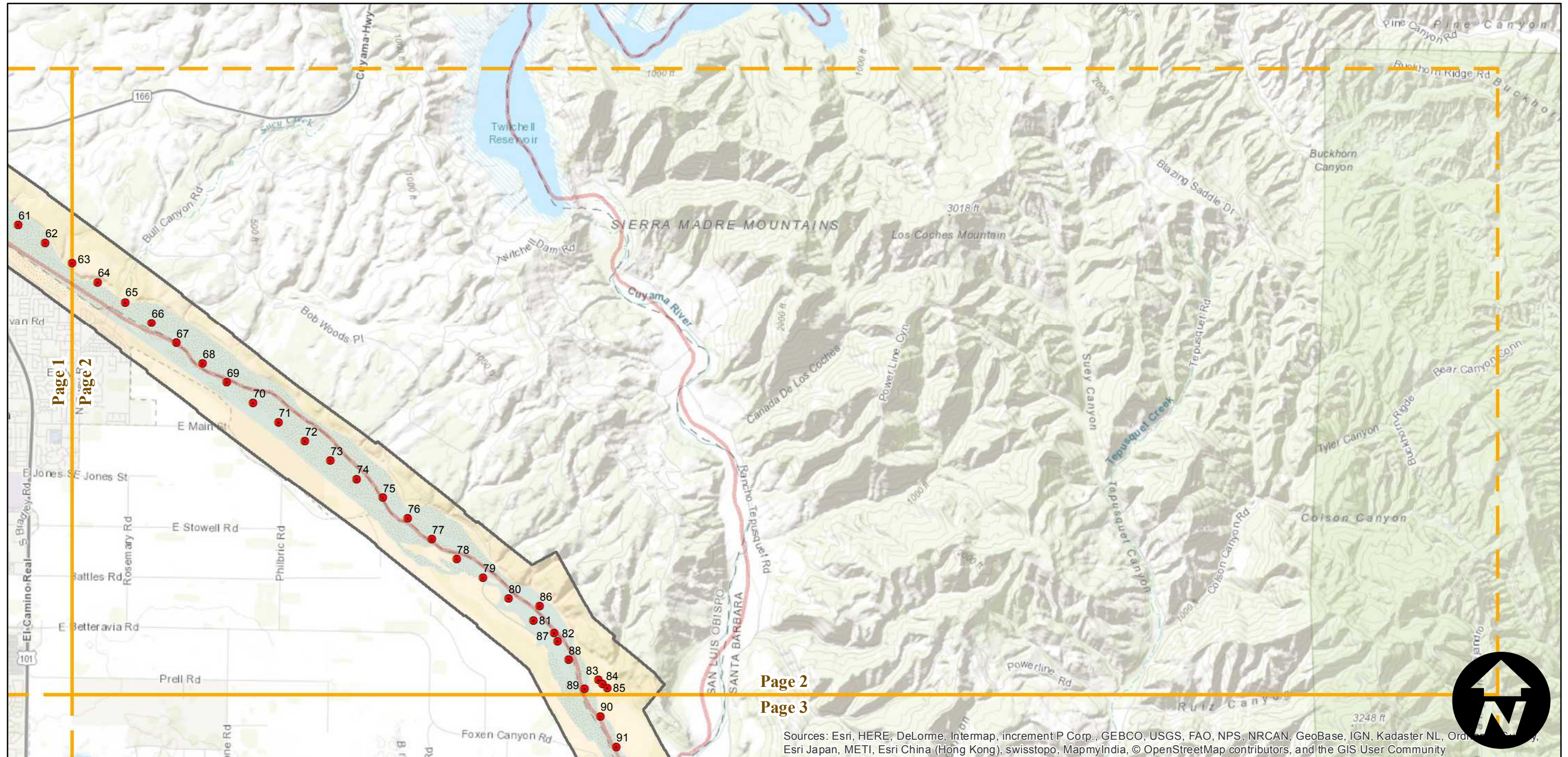
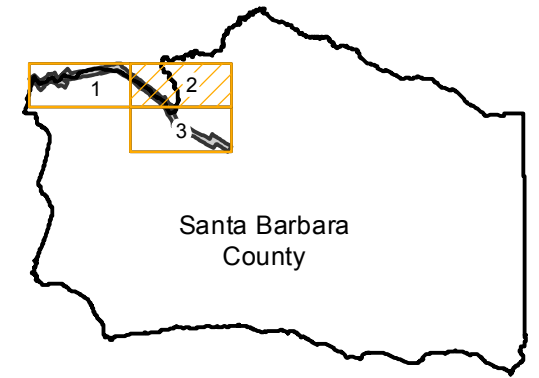
# HB-JK

Counties: Santa Barbara, San Luis Obispo  
Flight date(s): 12-16-1966  
Scale: 1:6000  
Overlap: 60%

Complete Metadata:  
<http://www.library.ucsb.edu/map-imagery-lab/aerial-photography-information>

Note: Santa Maria River from Pacific Ocean to vicinity of  
Foxen Canyon Road

## FLIGHT LOCATION



Page 2  
Page 3

Sources: Esri, HERE, DeLorme, Intermap, increment P Corp., GEBCO, USGS, FAO, NPS, NRCAN, GeoBase, IGN, Kadaster NL, Ordnance Survey, Esri Japan, METI, Esri China (Hong Kong), swisstopo, MapmyIndia, © OpenStreetMap contributors, and the GIS User Community

0 1 2 4 Miles

Index to Aerial Photography  
Page 2 of 3

Scale of this index: 1:65,000

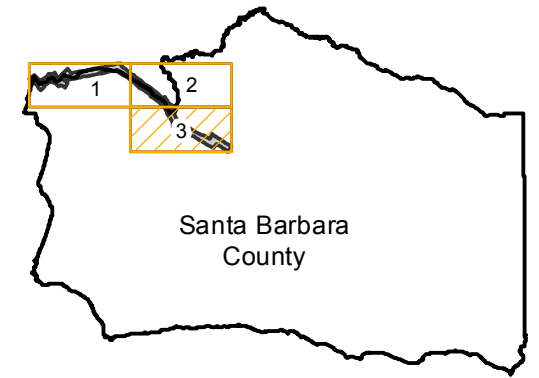


# HB-JK

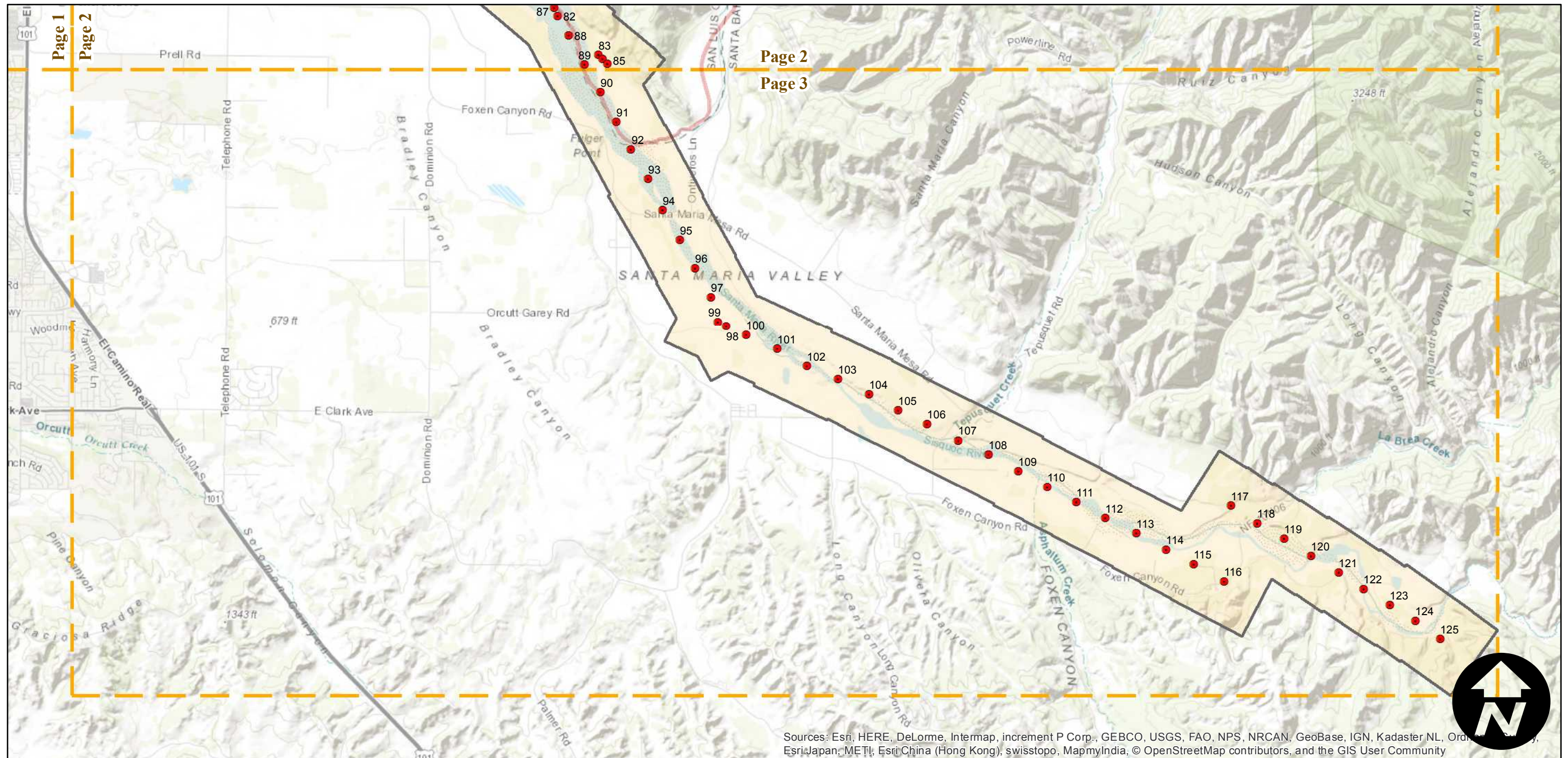
Counties: Santa Barbara, San Luis Obispo  
Flight date(s): 12-16-1966  
Scale: 1:6000  
Overlap: 60%

Note: Santa Maria River from Pacific Ocean to vicinity of  
Foxen Canyon Road

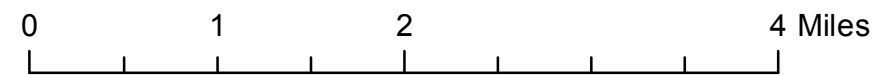
## FLIGHT LOCATION



Complete Metadata:  
<http://www.library.ucsb.edu/map-imagery-lab/aerial-photography-information>



Sources: Esri, HERE, DeLorme, Intermap, increment P Corp., GEBCO, USGS, FAO, NPS, NRCAN, GeoBase, IGN, Kadaster NL, Ordnance Survey, Esri Japan, METI, Esri China (Hong Kong), swisstopo, MapmyIndia, © OpenStreetMap contributors, and the GIS User Community



Index to Aerial Photography  
Page 3 of 3

Scale of this index: 1:65,000