

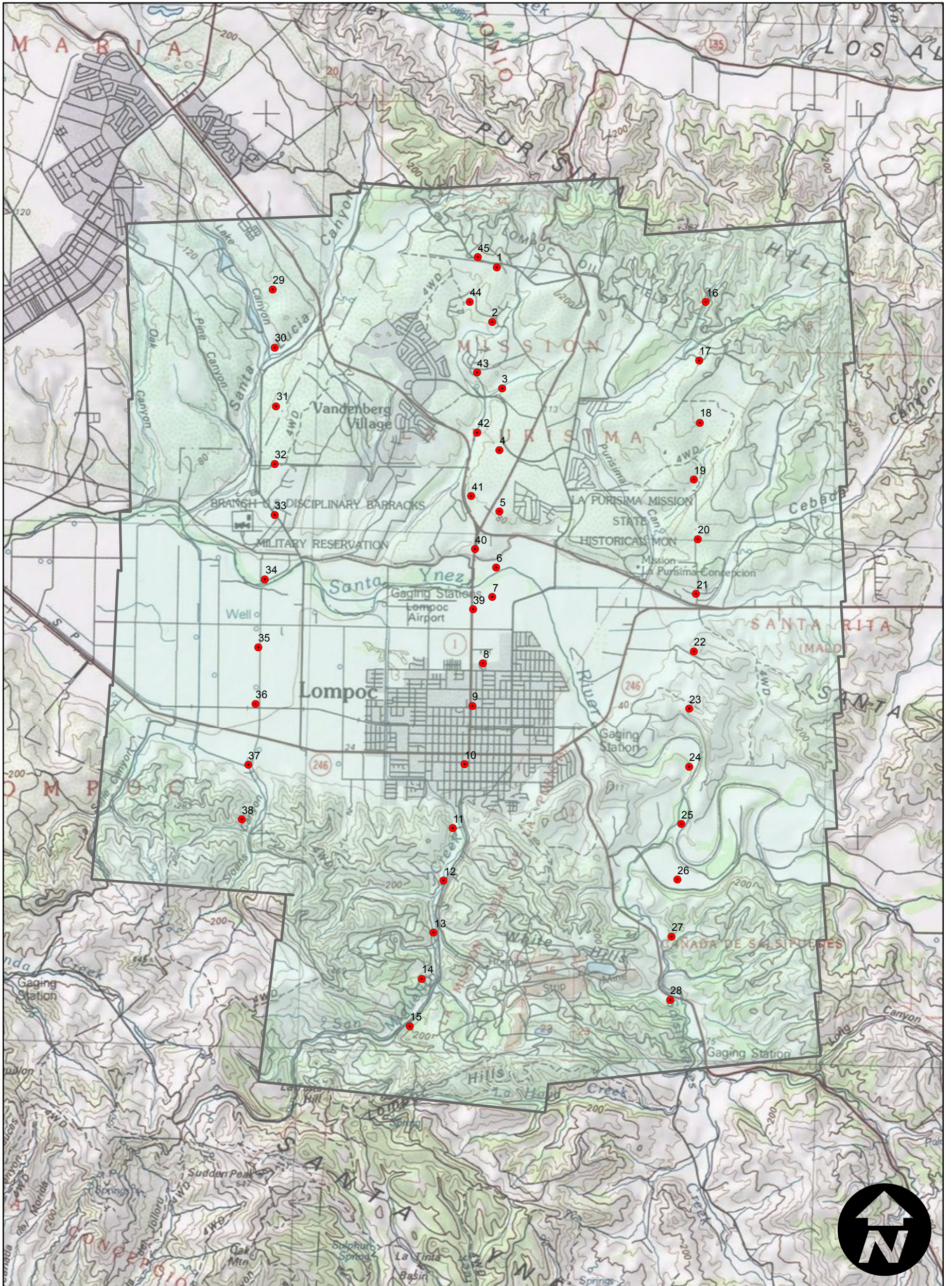
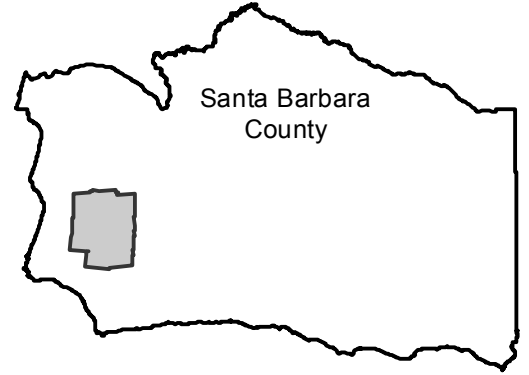
HB-GU

Counties: Santa Barbara
Flight date(s): 02-26-1966
Scale: 1: 12,000
Overlap: 60%

Note: Lompoc, Vandenberg
Village and vicinity; Mission Hills
and Cebada Canyon

Complete Metadata:
<http://www.library.ucsb.edu/mil/aerial-photography-tools>

FLIGHT LOCATION



0 0.75 1.5 3 Miles

