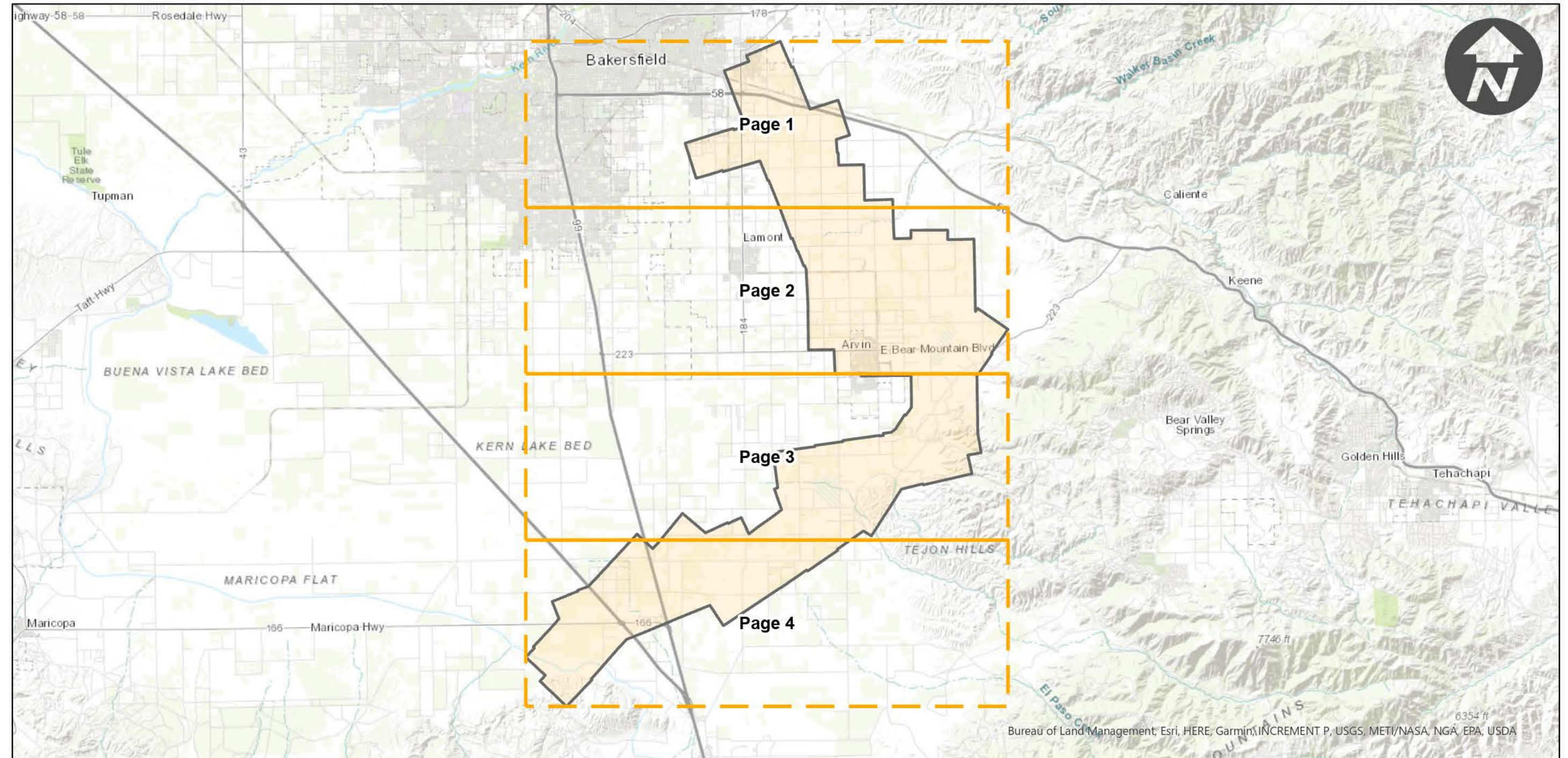
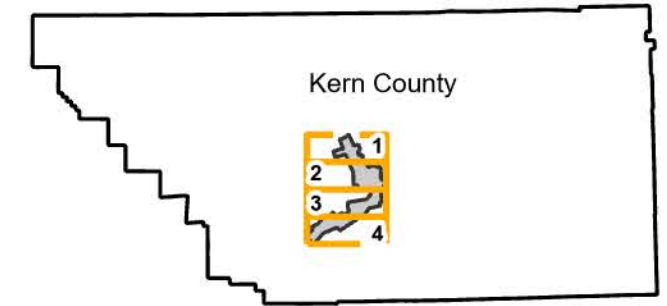


HA-UX

Counties: Kern
Flight date(s): 10-24-1963 to 10-25-1963
Scale: 1:9,600
Overlap: 60%

Note: Imagery consist of an area South and Southeast of Bakersfield. Coverage includes the unincorporated areas of Di Giorgio, Edison, Meridian, Mettler, and the city of Arvin.

FLIGHT LOCATION



0 4 8 16 Miles

Index to Aerial Photography
Page Key

Scale of this index: 1:250,000

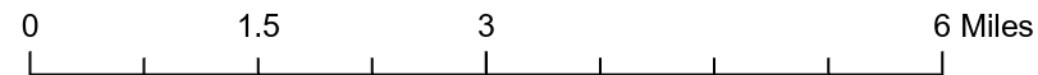
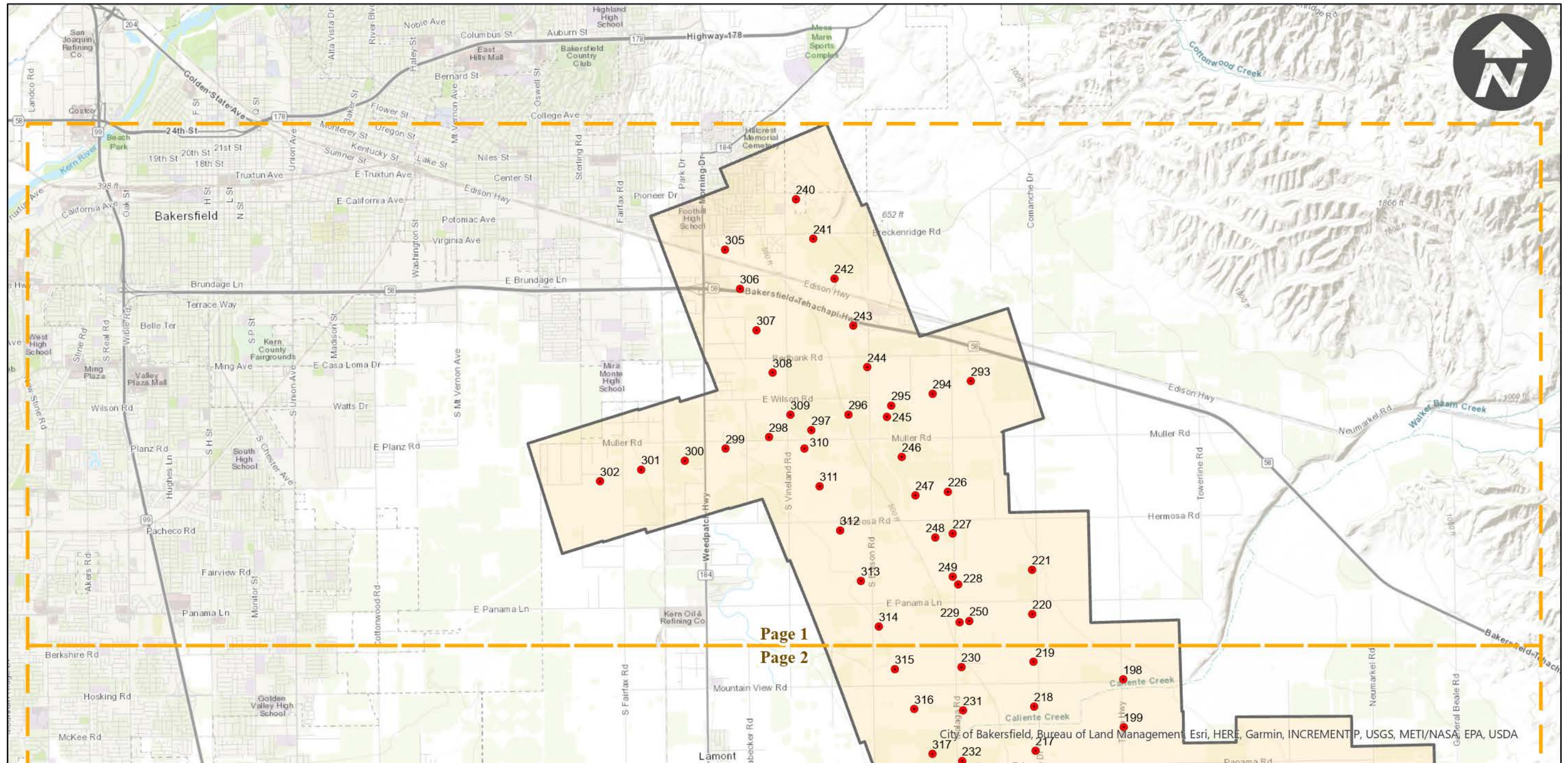
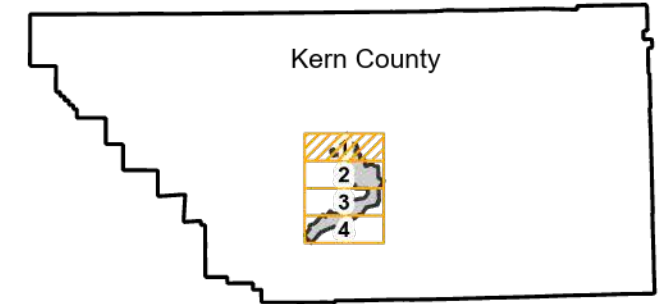
HA-UX

Counties: Kern
Flight date(s): 10-24-1963 to 10-25-1963
Scale: 1:9,600
Overlap: 60%

Complete Metadata:
<https://www.library.ucsb.edu/src/airphotos/aerial-photography-information>

Note: Imagery consist of an area South and Southeast of Bakersfield. Coverage includes the unincorporated areas of Di Giorgio, Edison, Meridian, Mettler, and the city of Arvin.

FLIGHT LOCATION

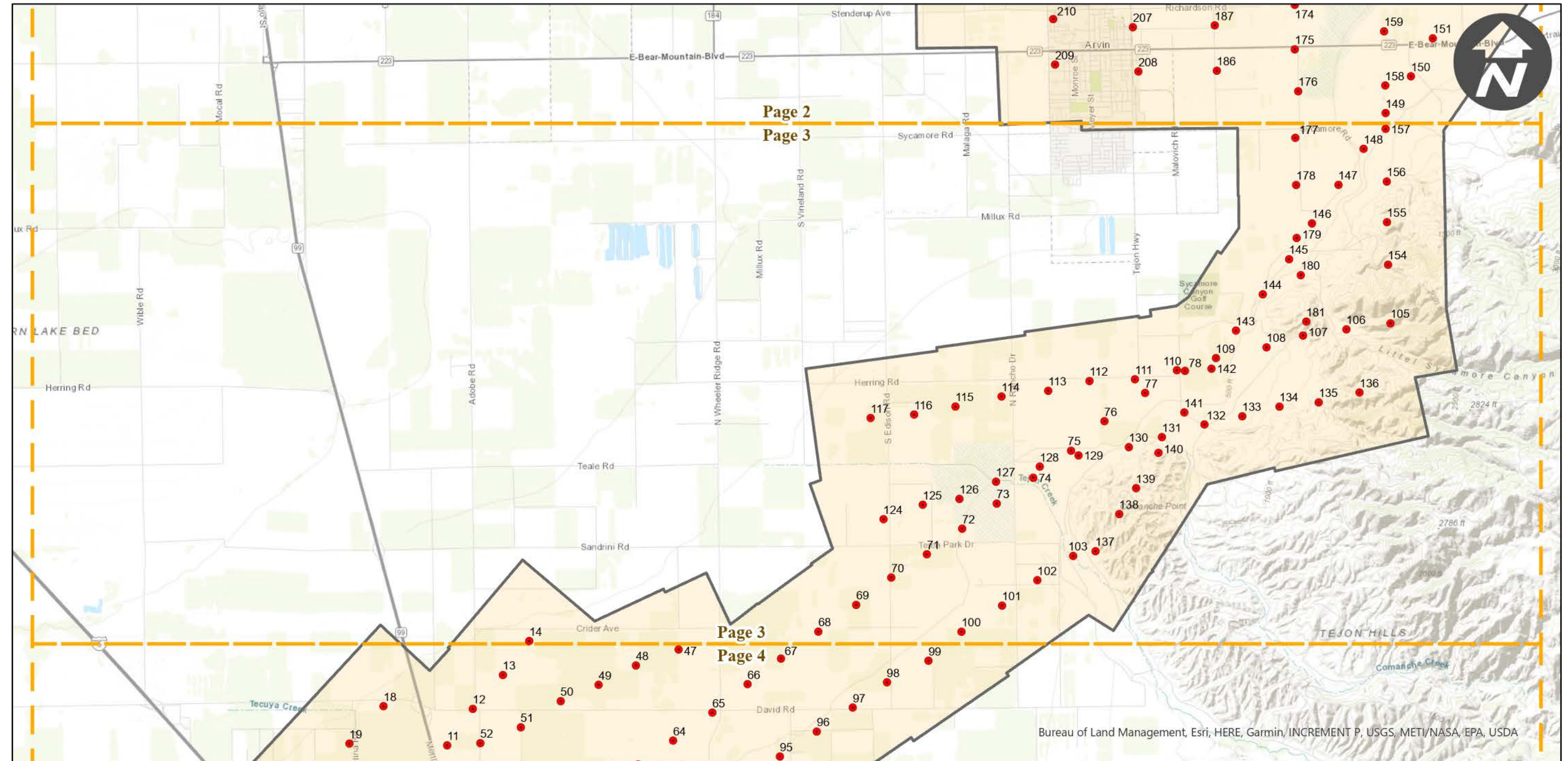
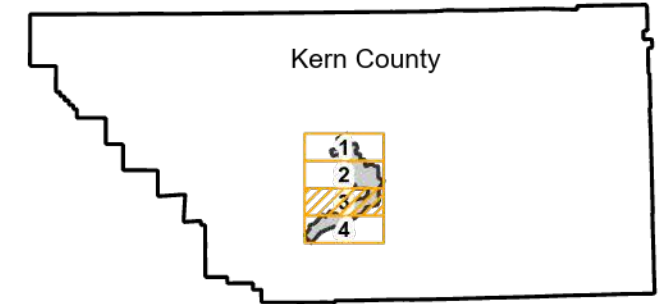


HA-UX

Counties: Kern
Flight date(s): 10-24-1963 to 10-25-1963
Scale: 1:9,600
Overlap: 60%

Note: Imagery consist of an area South and Southeast of Bakersfield. Coverage includes the unincorporated areas of Di Giorgio, Edison, Meridian, Mettler, and the city of Arvin.

FLIGHT LOCATION

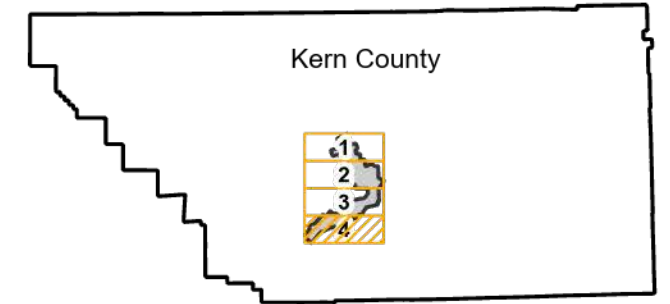


HA-UX

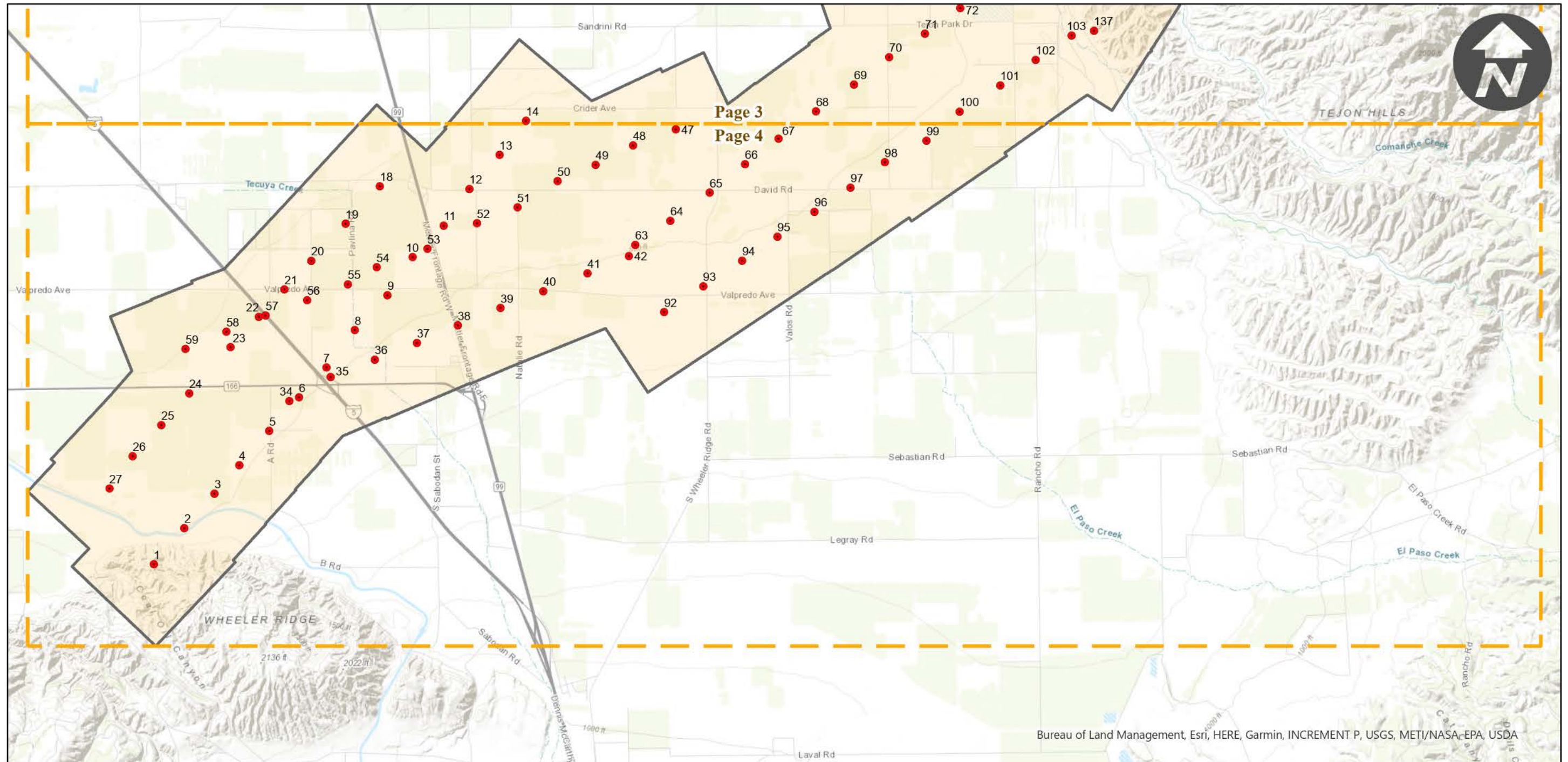
Counties: Kern
Flight date(s): 10-24-1963 to 10-25-1963
Scale: 1:9,600
Overlap: 60%

Note: Imagery consist of an area South and Southeast of Bakersfield. Coverage includes the unincorporated areas of Di Giorgio, Edison, Meridian, Mettler, and the city of Arvin.

FLIGHT LOCATION



Complete Metadata:
<https://www.library.ucsb.edu/src/airphotos/aerial-photography-information>



0 1.5 3 6 Miles

Index to Aerial Photography
Page 4 of 4

Scale of this index: 1:80,000

Bureau of Land Management, Esri, HERE, Garmin, INCREMENT P, USGS, METI/NASA, EPA, USDA