

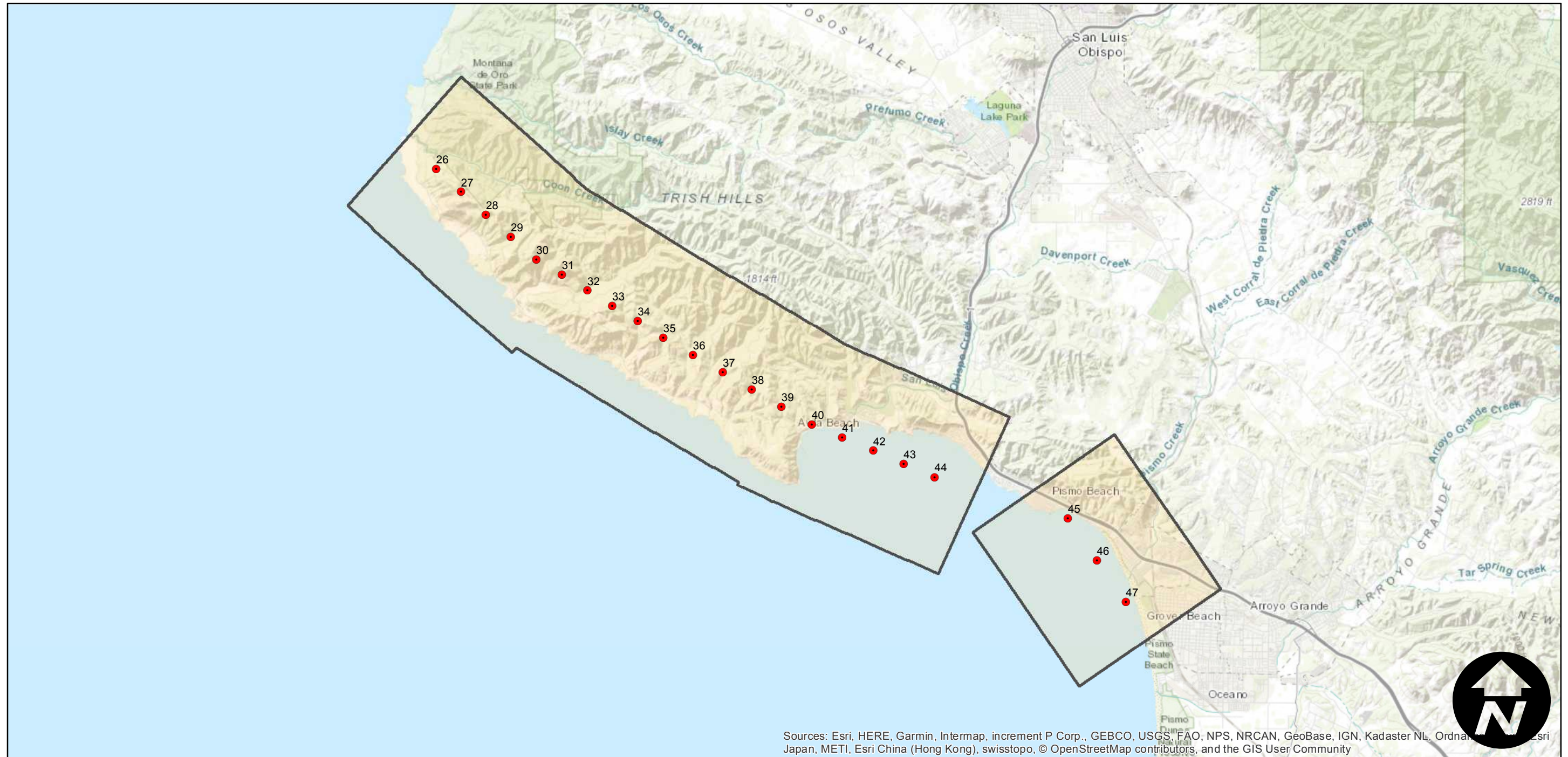
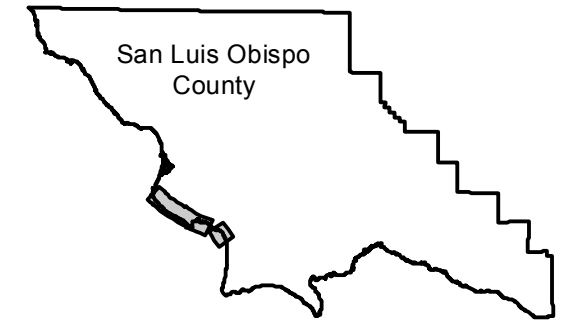
HA-MN

Counties: San Luis Obispo
Flight date(s): 11-09-1961
Scale: 1:12,000
Overlap: 60%

Complete Metadata:
<https://www.library.ucsb.edu/src/airphotos/aerial-photography-information>

Note: Coverage of Point Buchon to Avila Beach and Pismo Beach to Grover Beach. Frame numbers 53, 56 and 64 are high obliques of Avila Beach and Pismo Beach.

FLIGHT LOCATION



Sources: Esri, HERE, Garmin, Intermap, increment P Corp., GEBCO, USGS, FAO, NPS, NRCAN, GeoBase, IGN, Kadaster NL, Ordnance Survey, Esri Japan, METI, Esri China (Hong Kong), swisstopo, © OpenStreetMap contributors, and the GIS User Community

0 2 4 8 Miles

Index to Aerial Photography
Page 1 of 1

Scale of this index: 1:130,000