

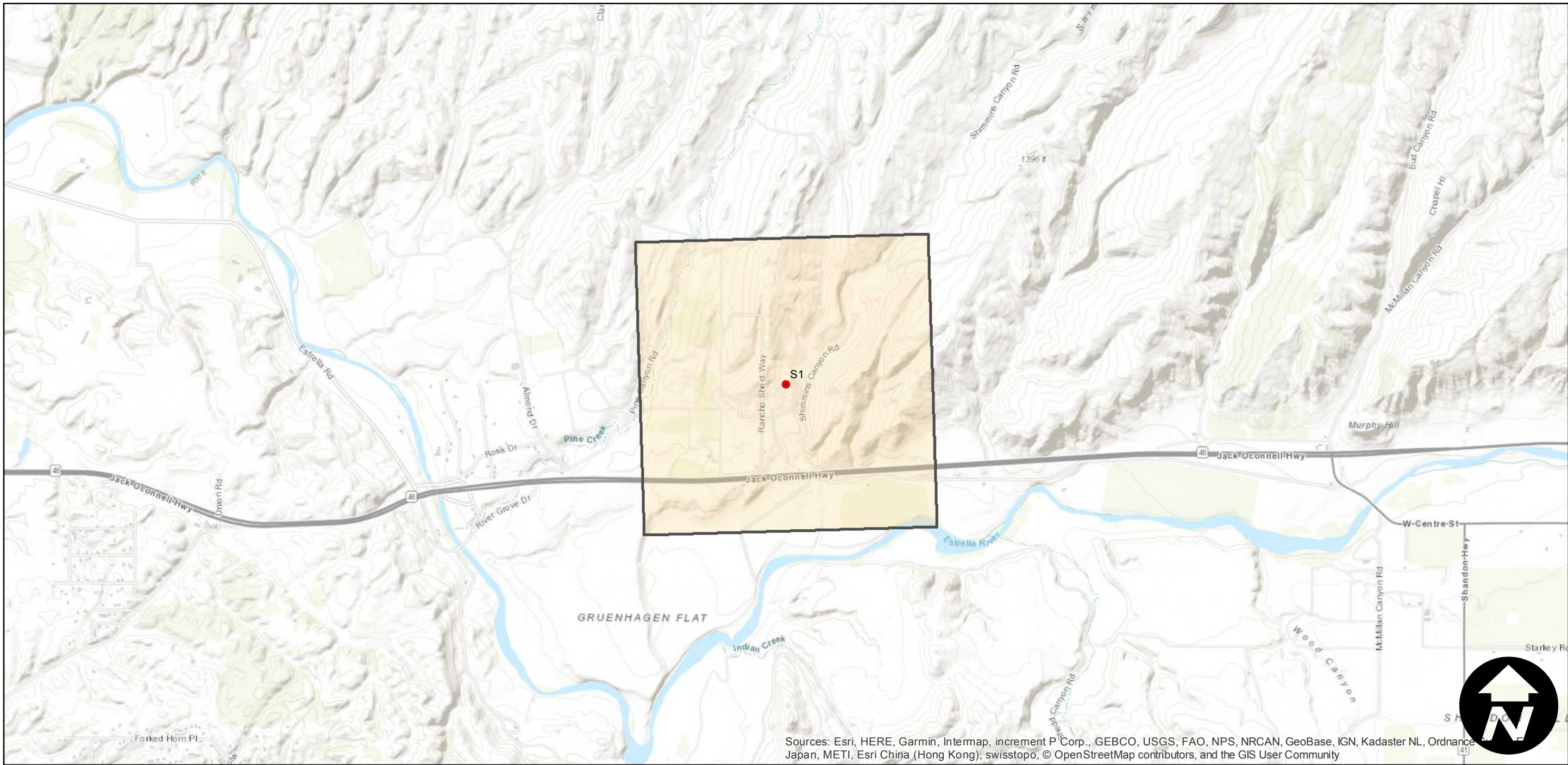
# GS-1337 (1:12.4K)

Counties: San Luis Obispo  
Flight date(s): 12-08-1989  
Scale: 1:12,480  
Overlap: 0%

Complete Metadata:  
<https://www.library.ucsb.edu/src/airphotos/aerial-photography-information>

Note: Paso Robles; Vicinity of Gruenhagen Flat Road and Shimmins Canyon Road. Flight includes an oblique photograph shot that faces the west direction.

## FLIGHT LOCATION



0 0.5 1 2 Miles

Index to Aerial Photography  
Page 1 of 1

Scale of this index: 1:40,000