

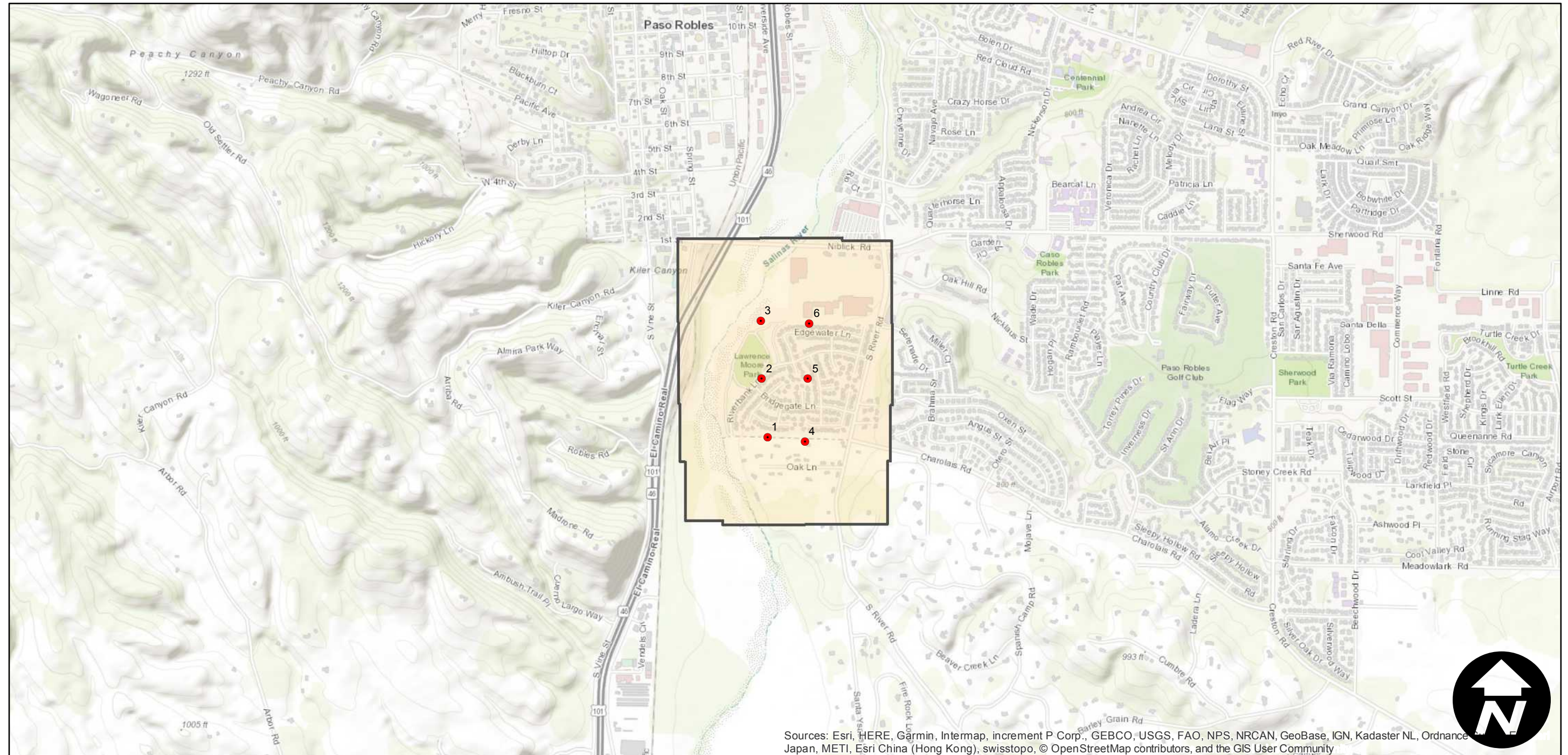
GS-1326 (1:3.5K)

Counties: San Luis Obispo
Flight date(s): 11-29-1989
Scale: 1:3,540
Overlap: 60%

Complete Metadata:
<https://www.library.ucsb.edu/src/airphotos/aerial-photography-information>

Note: Paso Robles; Vicinity of Riverbank Lane and Bridgegate Lane.

FLIGHT LOCATION



Sources: Esri, HERE, Garmin, Intermap, increment P Corp., GEBCO, USGS, FAO, NPS, NRCAN, GeoBase, IGN, Kadaster NL, Ordnance Survey, Esri Japan, METI, Esri China (Hong Kong), swisstopo, © OpenStreetMap contributors, and the GIS User Community

