

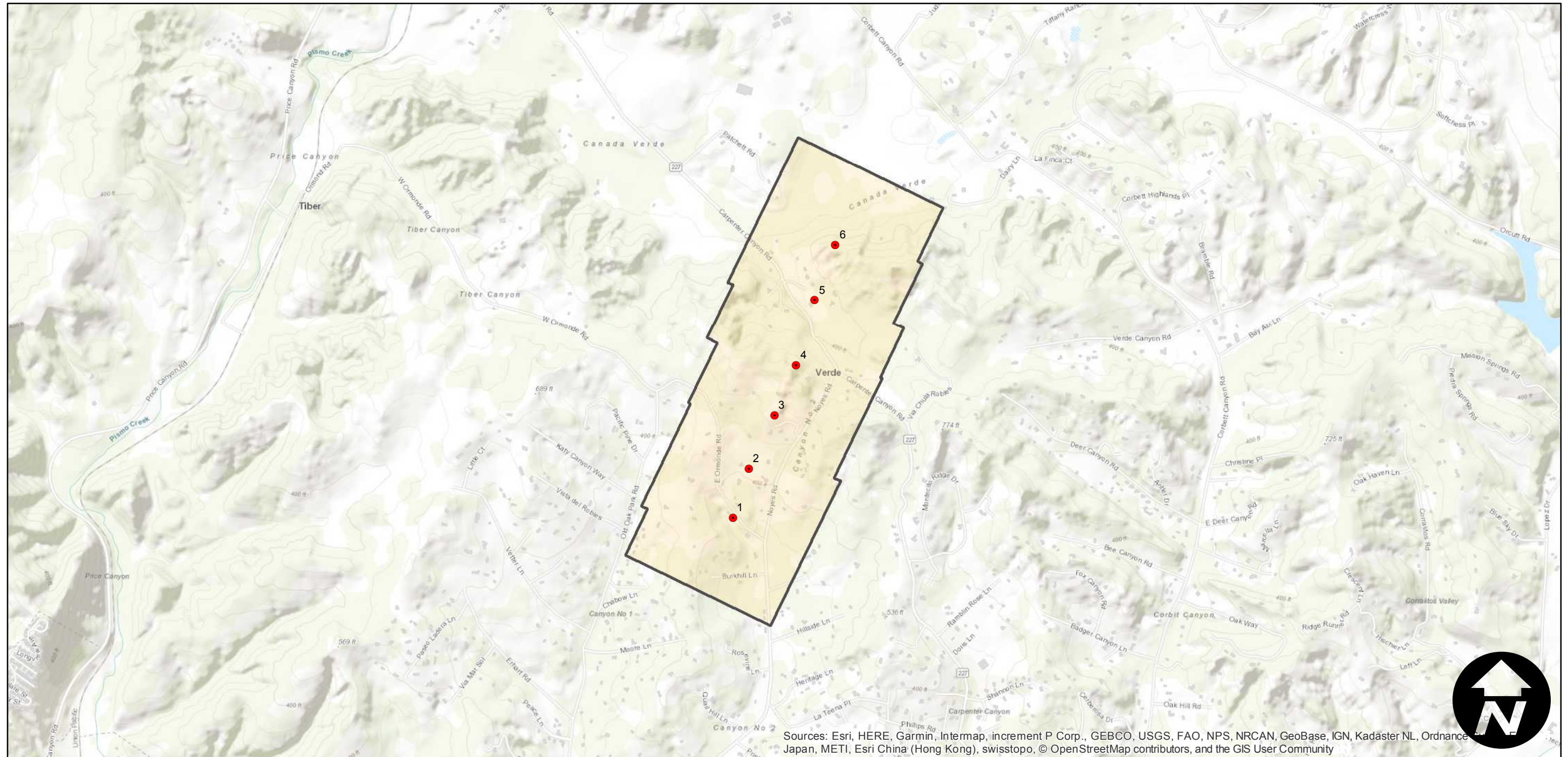
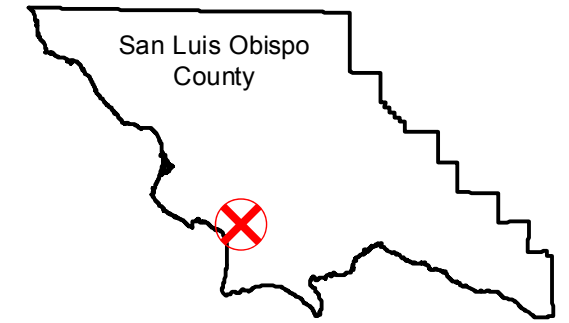
GS-1265

Counties: San Luis Obispo
Flight date(s): 08-03-1989
Scale: 1:4,320
Overlap: 60%

Complete Metadata:
<https://www.library.ucsb.edu/src/airphotos/aerial-photography-information>

Note: Arroyo Grande; Junction of East Ormonde Road and Noyes Road to Carpenter Canyon Road (Highway 227).

FLIGHT LOCATION



Sources: Esri, HERE, Garmin, Intermap, increment P Corp., GEBCO, USGS, FAO, NPS, NRCAN, GeoBase, IGN, Kadaster NL, Ordnance Survey, Esri China (Hong Kong), Swisstopo, © OpenStreetMap contributors, and the GIS User Community

