

GS-1257

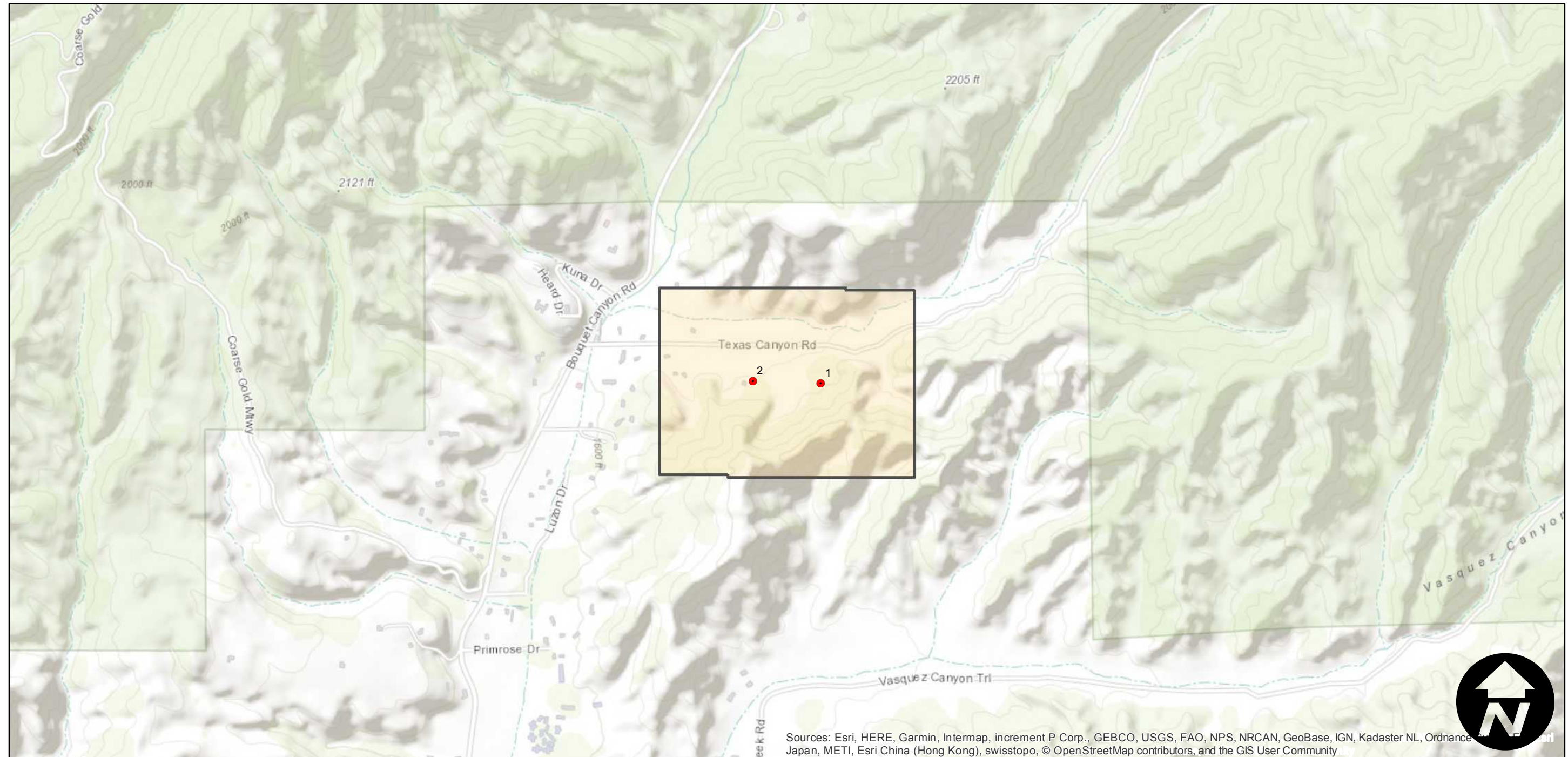
Counties: Los Angeles
Flight date(s): 11-30-1989
Scale: 1:3,000
Overlap: 60%

Note: Santa Clarita; Area in the vicinity of Texas Canyon Road, just a quarter of a mile east from Bouquet Canyon Road.

FLIGHT LOCATION



Complete Metadata:
<https://www.library.ucsb.edu/src/airphotos/aerial-photography-information>



0 0.25 0.5 1 Miles