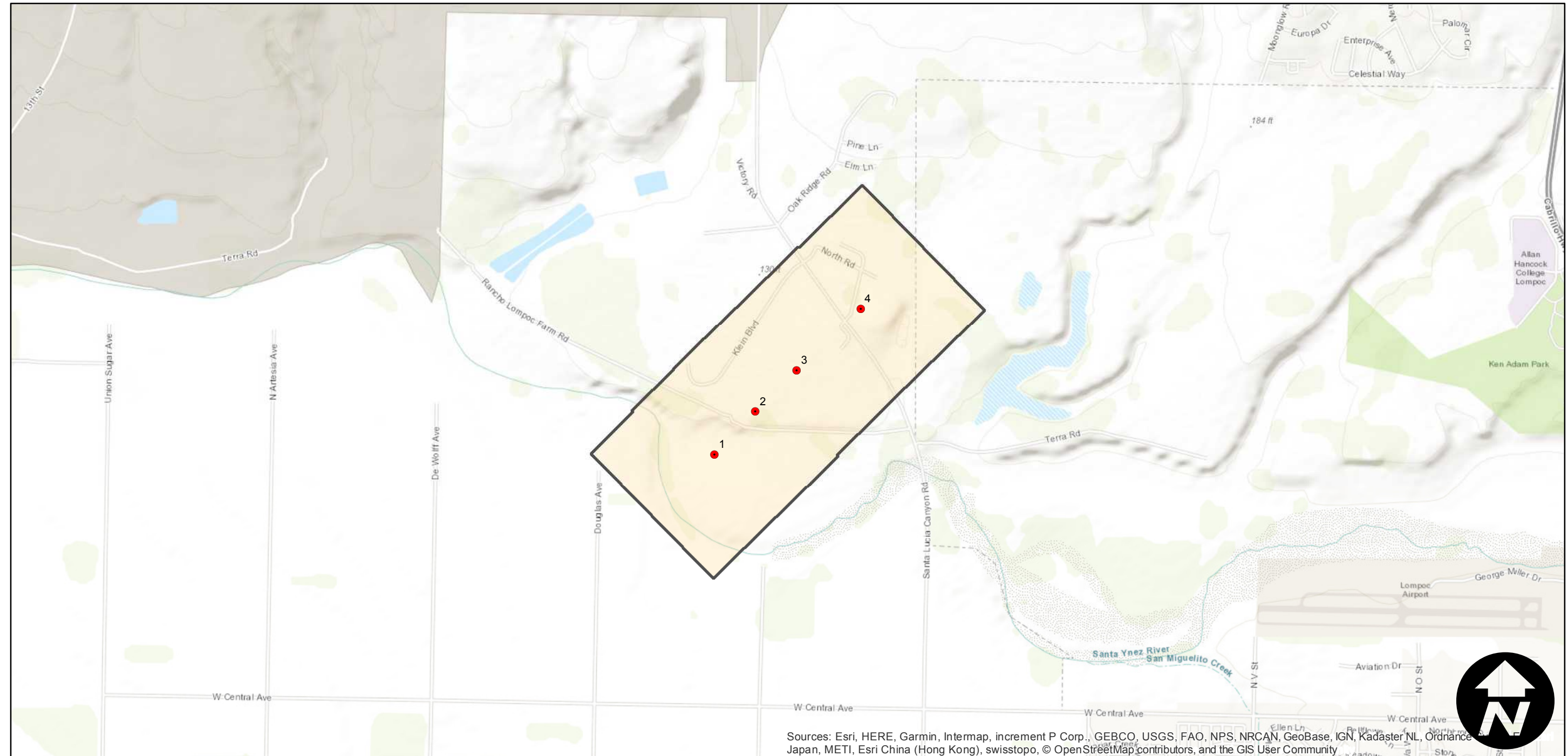
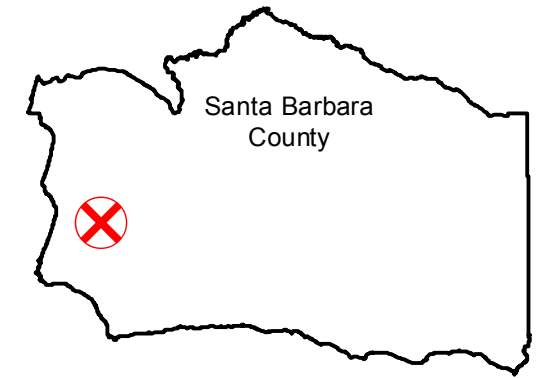


GS-1246 (1:3.7K)

Counties: Santa Barbara
Flight date(s): 06-29-1989
Scale: 1:3,750
Overlap: 60%

Note: Lompoc; Klein Boulevard and vicinity (site of present day Federal Correctional Institution, Lompoc).

FLIGHT LOCATION



Sources: Esri, HERE, Garmin, Intermap, increment P Corp., GEBCO, USGS, FAO, NPS, NRCAN, GeoBase, IGN, Kadaster NL, Ordnance Japan, METI, Esri China (Hong Kong), swisstopo, © OpenStreetMap contributors, and the GIS User Community

0 0.25 0.5 1 Miles

Index to Aerial Photography
Page 1 of 1

Scale of this index: 1:20,000