

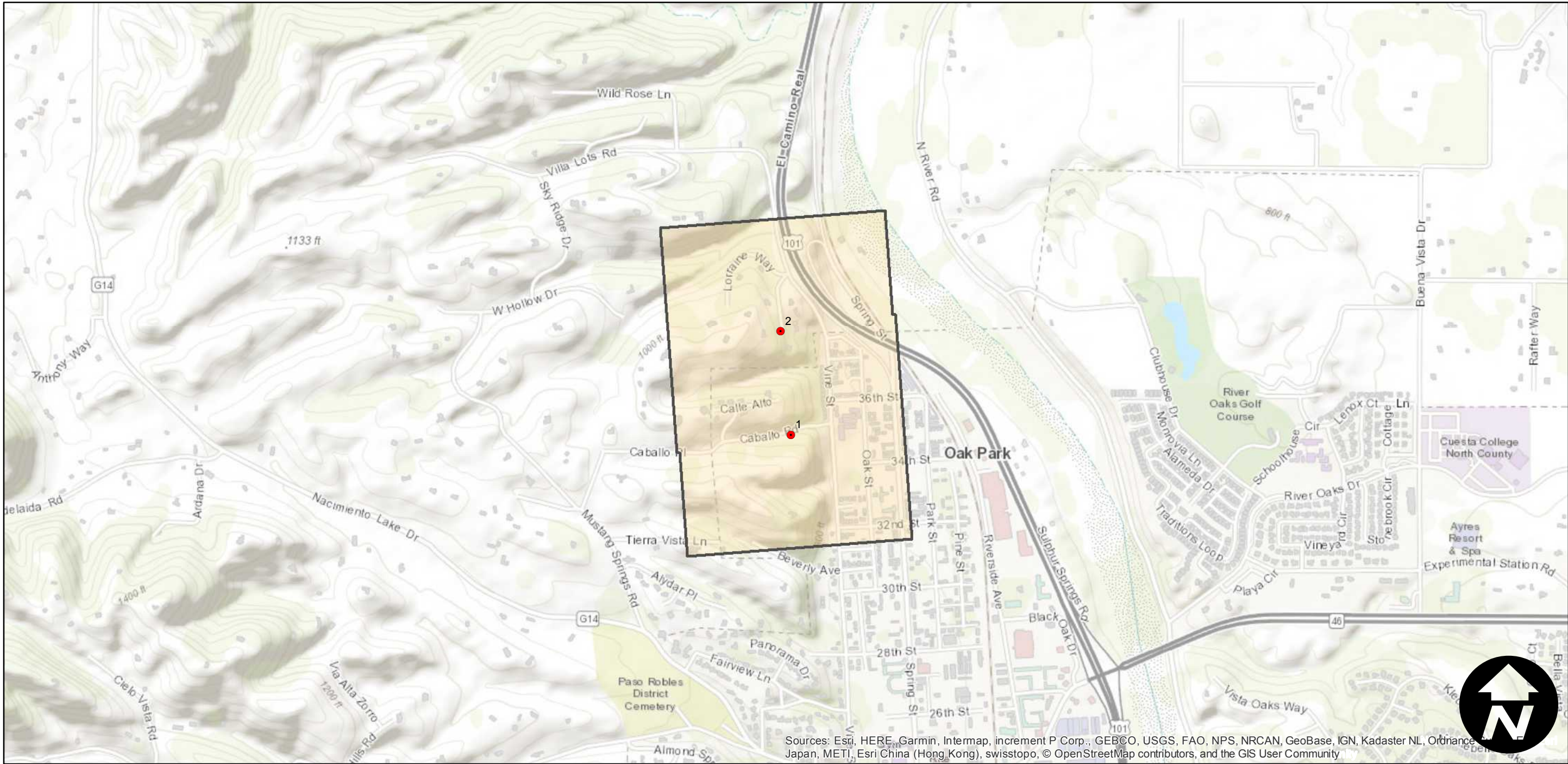
GS-1230

Counties: San Luis Obispo
Flight date(s): 06-07-1989 to 06-29-1989
Scale: 1:3,600
Overlap: 60%

Complete Metadata:
<https://www.library.ucsb.edu/src/airphotos/aerial-photography-information>

Note: Paso Robles; Vine Street, from Lorraine Way to 32nd Street. Flight includes three obliques of the area that were photographed on June 29th; The first oblique is facing in the southwest direction toward Peachy Canyon Road, the second is facing in the northwest direction toward Lake Nacimiento, and the third is facing in the west direction towards Adelaida.

FLIGHT LOCATION



0 0.25 0.5 1 Miles

Index to Aerial Photography
Page 1 of 1

Scale of this index: 1:15,000