

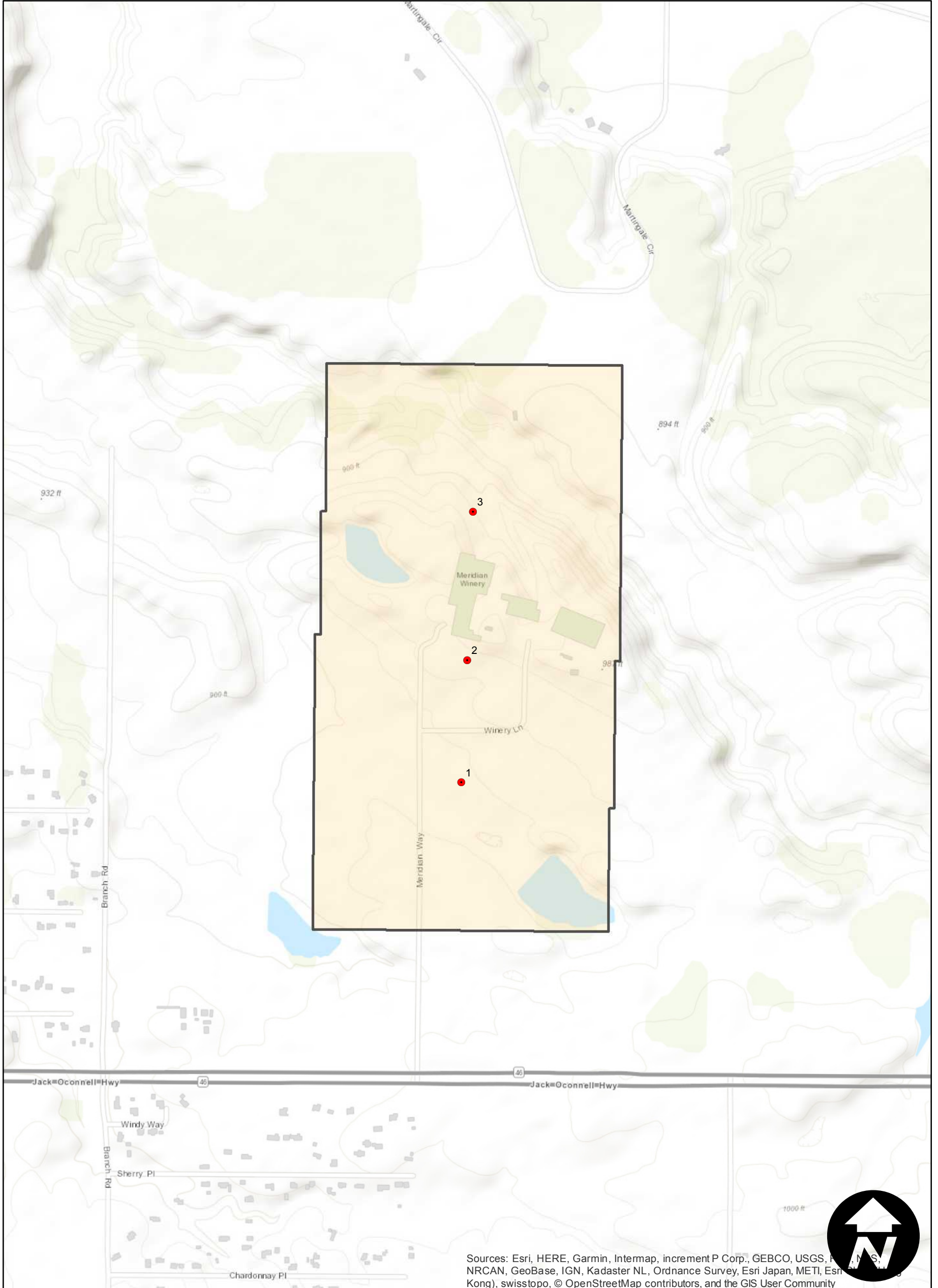
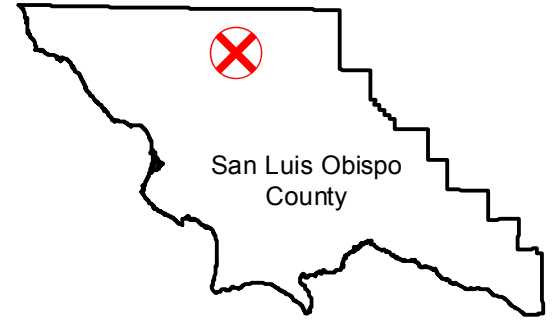
# GS-1188

Counties: San Luis Obispo  
Flight date(s): 03-10-1989  
Scale: 1:3,360  
Overlap: 60%

Complete Metadata:  
<https://www.library.ucsb.edu/src/airphotos/aerial-photography-information>

Note: Paso Robles; Area just east of Branch Road and north of Highway 46.

## FLIGHT LOCATION



Sources: Esri, HERE, Garmin, Intermap, increment P Corp., GEBCO, USGS, NRCAN, GeoBase, IGN, Kadaster NL, Ordnance Survey, Esri Japan, METI, Esri (Kong), swisstopo, © OpenStreetMap contributors, and the GIS User Community

0 0.1 0.2 0.4 Miles

Index to Aerial Photography  
Page 1 of 1

Scale of this index: 1:10,000