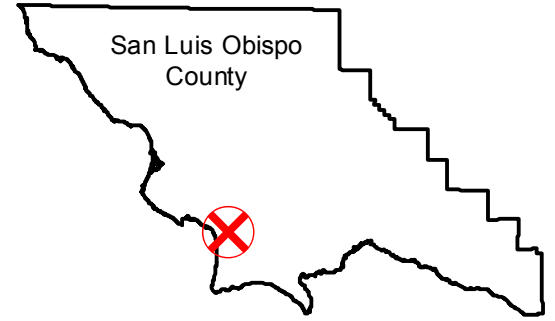


GS-1018 (1:3,600)

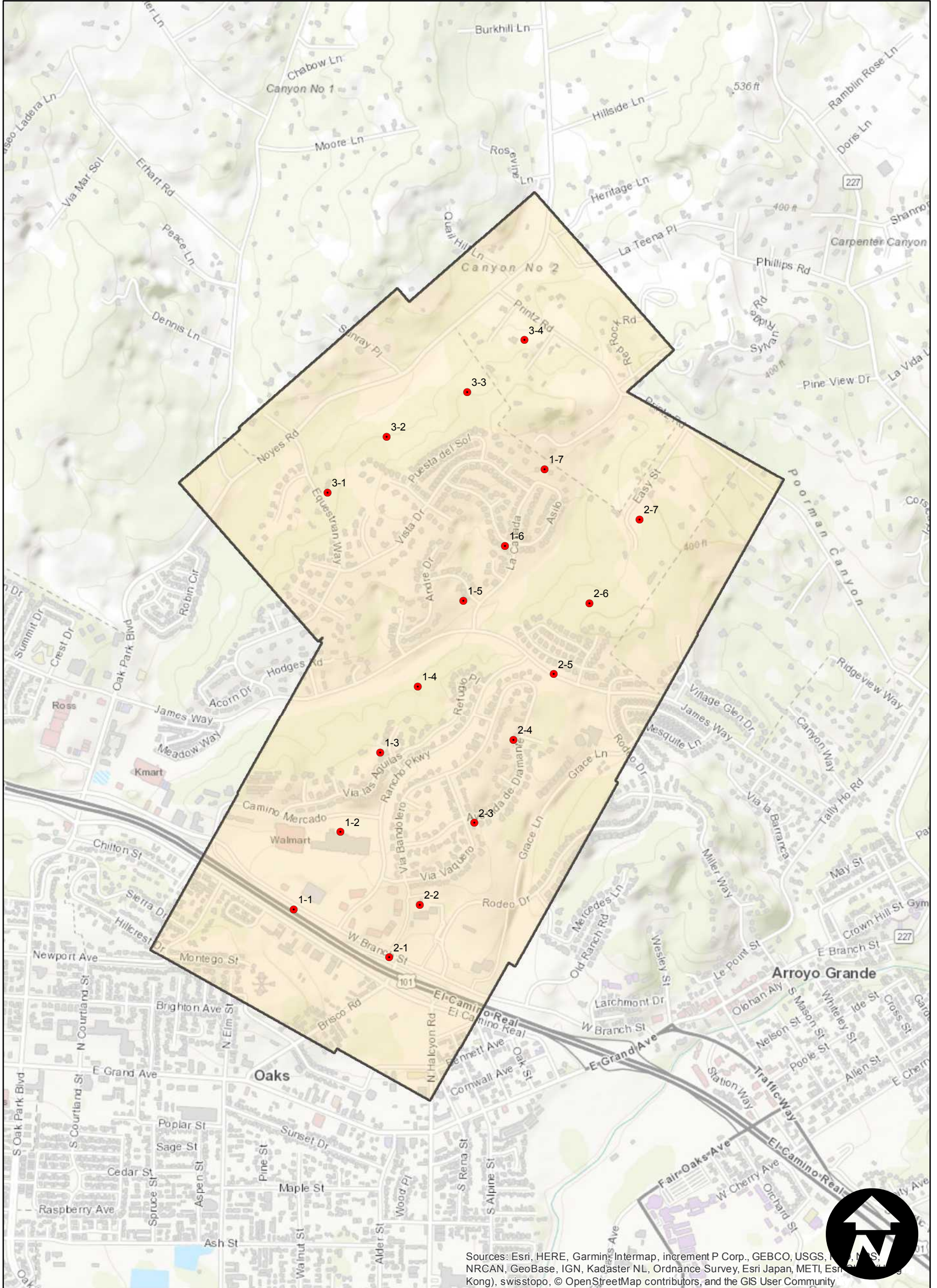
Counties: San Luis Obispo
 Flight date(s): 01-28-1988 to 02-03-1988
 Scale: 1:3,600
 Overlap: 60%

Note: Arroyo Grande;
 Rancho Grande and
 vicinity. Flight coverage
 includes vertical and
 oblique shots.

FLIGHT LOCATION



Complete Metadata:
<https://www.library.ucsb.edu/src/airphotos/aerial-photography-information>



Sources: Esri, HERE, Garmin, Intermap, increment P Corp., GEBCO, USGS, NRCAN, GeoBase, IGN, Kadaster NL, Ordnance Survey, Esri Japan, METI, Esri (China), Swisstopo, © OpenStreetMap contributors, and the GIS User Community

