

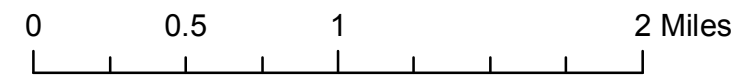
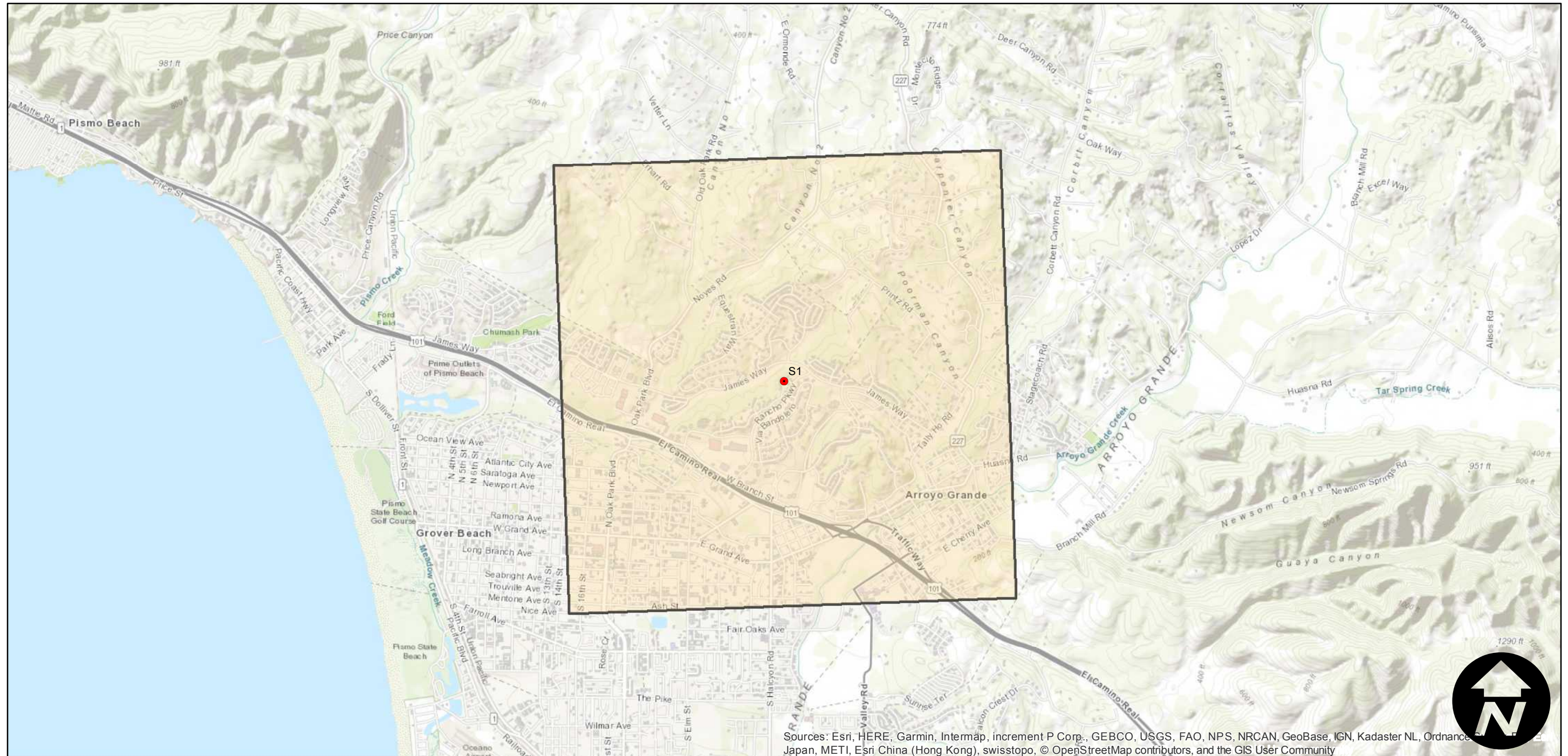
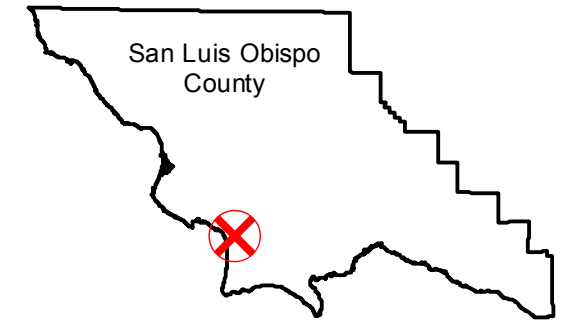
GS-1018 (1:19,200)

Counties: San Luis Obispo
Flight date(s): 01-28-1988 to 02-03-88
Scale: 1:19,200
Overlap: 0%

Complete Metadata:
<https://www.library.ucsb.edu/src/airphotos/aerial-photography-information>

Note: Arroyo Grande; Rancho Grande and vicinity. Flight coverage includes vertical and oblique shots.

FLIGHT LOCATION



Sources: Esri, HERE, Garmin, Intermap, increment P Corp., GEBCO, USGS, FAO, NPS, NRCAN, GeoBase, IGN, Kadaster NL, Ordnance Survey, Esri Japan, METI, Esri China (Hong Kong), swisstopo, © OpenStreetMap contributors, and the GIS User Community

