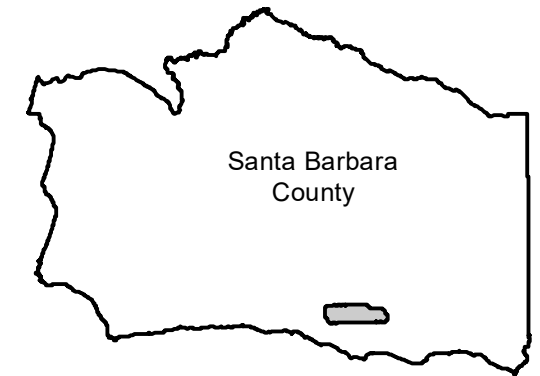


Gap-Fire-SBFlood (1:6600)

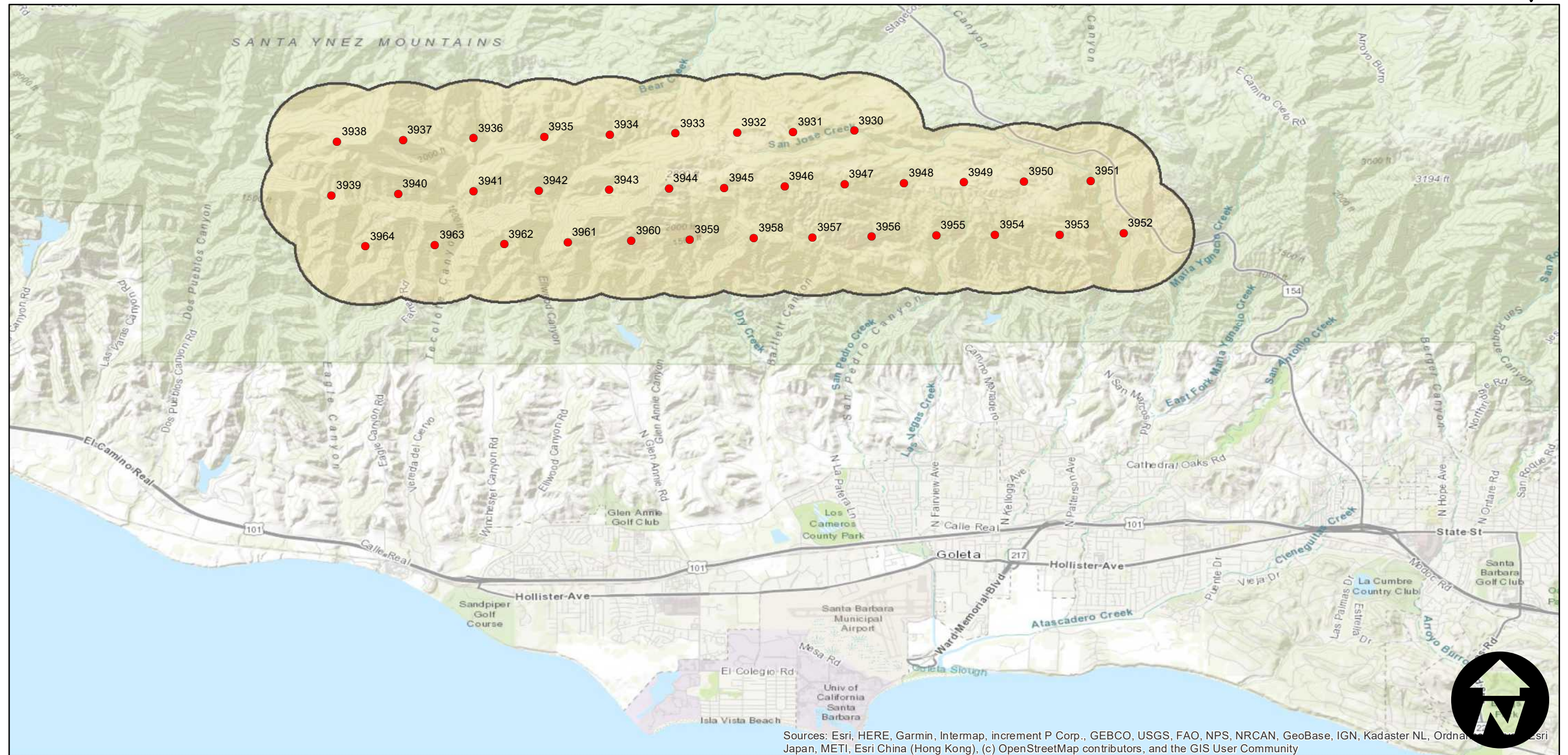
Counties: Santa Barbara
Flight date(s): 08-06-2008
Scale: 1: 6,600
Overlap: 60%

Note: Imagery of the GAP fire burn area that occurred in the Santa Ynez Mountains above Goleta, Ca. between July 1 and July 28, 2008

FLIGHT LOCATION



Complete Metadata:
<https://www.library.ucsb.edu/src/airphotos/aerial-photography-information>



Sources: Esri, HERE, Garmin, Intermap, increment P Corp., GEBCO, USGS, FAO, NPS, NRCAN, GeoBase, IGN, Kadaster NL, Ordnance Survey, Esri Japan, METI, Esri China (Hong Kong), (c) OpenStreetMap contributors, and the GIS User Community

