

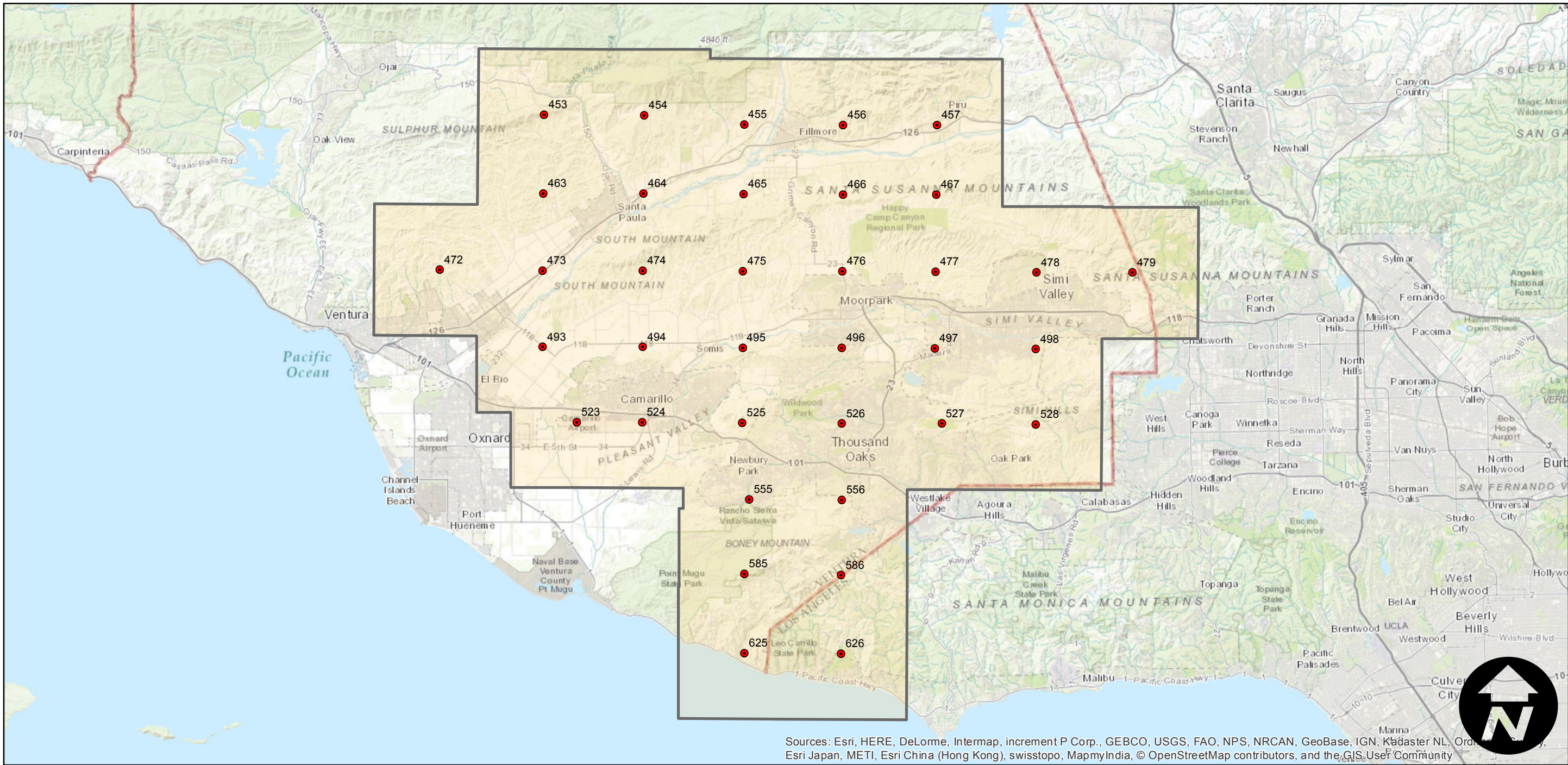
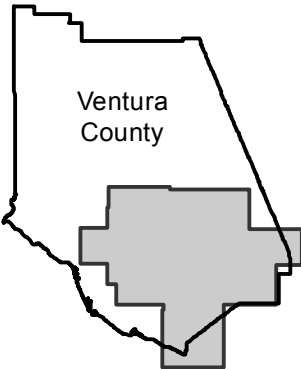
EAG-VN-01

Counties: Ventura
Flight date(s): 05-23-2001 to 07-26-2001
Scale: 1:42,000
Overlap: 20%

Complete Metadata:
<http://www.library.ucsb.edu/mil/aerial-photography-tools>

Note: Sulphur Springs to intersection of Pacific Coast Highway (SR-1) and Decker Canyon Road (SR-23). Areas covered include Fillmore, Santa Paula, Moorpark, Simi Valley, Camarillo and Thousand Oaks. Imagery acquired December 2013.

FLIGHT LOCATION



0 5 10 20 Miles

Index to Aerial Photography
Page 1 of 1

Scale of this index: 1:300,000