

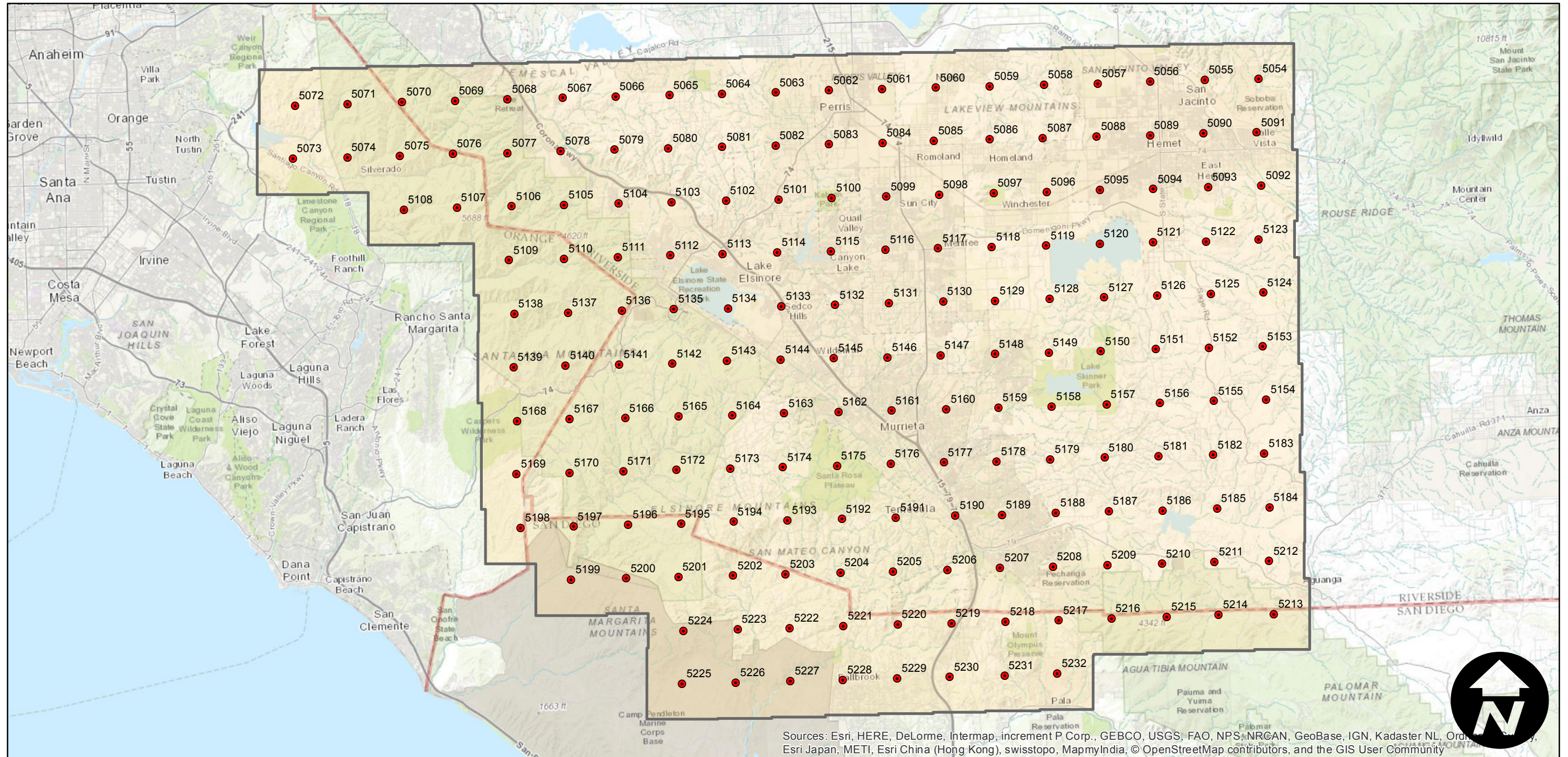
EAG-TEM-06

Counties: Riverside, Orange, San Diego
Flight date(s): 04-13-2006
Scale: 1:24,000
Overlap: 20%

Note: Southwest Riverside County. San Jacinto to Temecula. Areas covered include Hemet, Menifee, Lake Elsinore, Silverado, and Murrieta. Coverage extends into San Diego and Orange counties. Imagery acquired December 2013.



Complete Metadata:
<http://www.library.ucsb.edu/mil/aerial-photography-tools>



Sources: Esri, HERE, DeLorme, Intermap, increment P Corp., GEBCO, USGS, FAO, NPS, NRCAN, GeoBase, IGN, Kadaster NL, Ordnance Survey, Esri Japan, METI, Esri China (Hong Kong), swisstopo, MapmyIndia, © OpenStreetMap contributors, and the GIS User Community

