

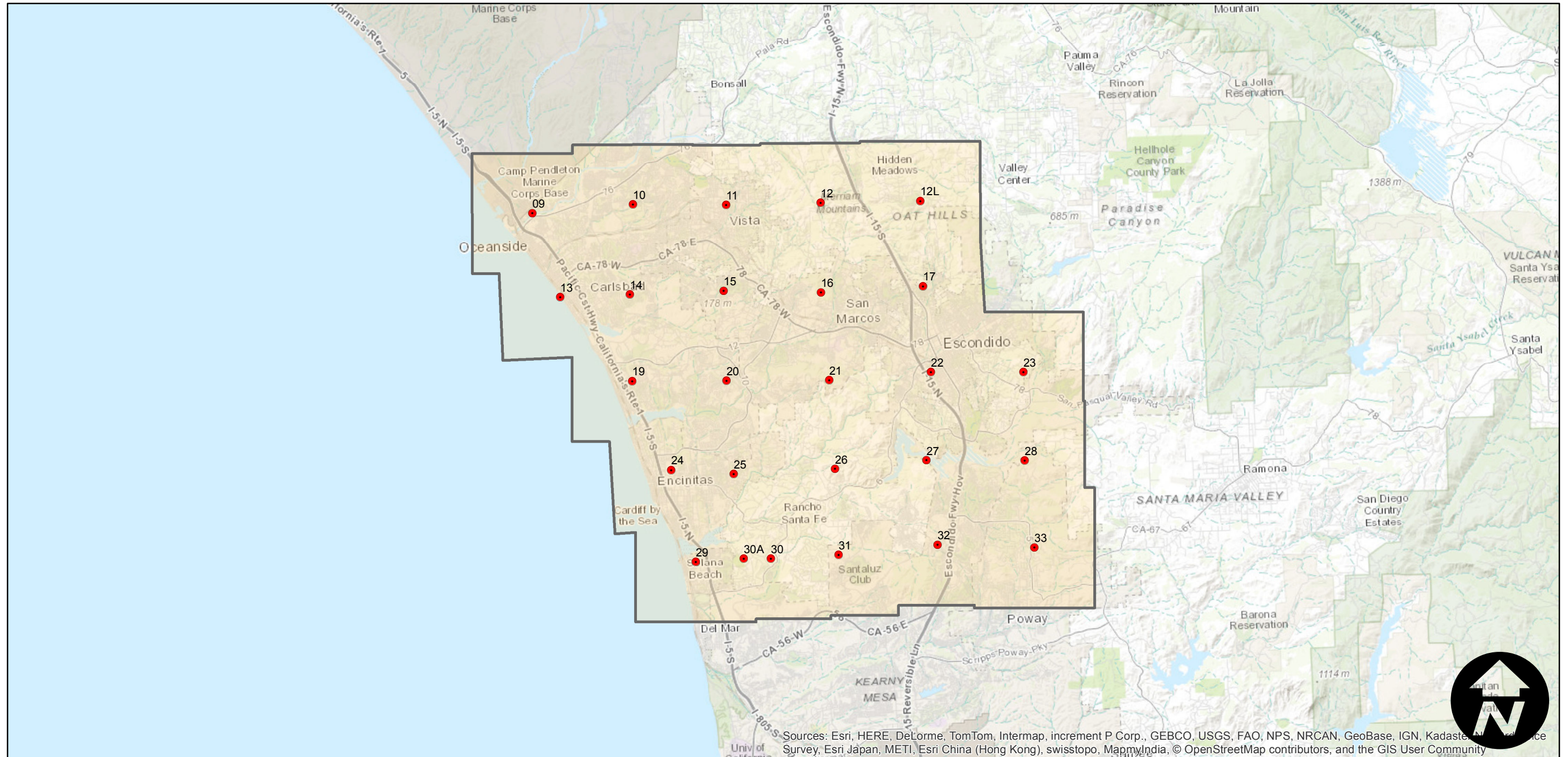
EAG-SD-91

Counties: San Diego
Flight date(s): 01-18-1991
Scale: 1:35,000
Overlap: 20%

Complete Metadata:
<http://www.library.ucsb.edu/mil/aerial-photography-tools>

Note: Oceanside to Solana Beach west of the 15 freeway. Frames OB1 to OB8 (not shown on index) are high-obliques covering Mission Bay to Oceanside. Imagery acquired December 2013.

FLIGHT LOCATION



0 3 6 12 Miles

Index to Aerial Photography
Page 1 of 1

Scale of this index: 1:275,000

Sources: Esri, HERE, DeLorme, TomTom, Intermap, increment P Corp., GEBCO, USGS, FAO, NPS, NRCAN, GeoBase, IGN, Kadaster, N, and
Survey, Esri Japan, METI, Esri China (Hong Kong), swisstopo, MapmyIndia, © OpenStreetMap contributors, and the GIS User Community