

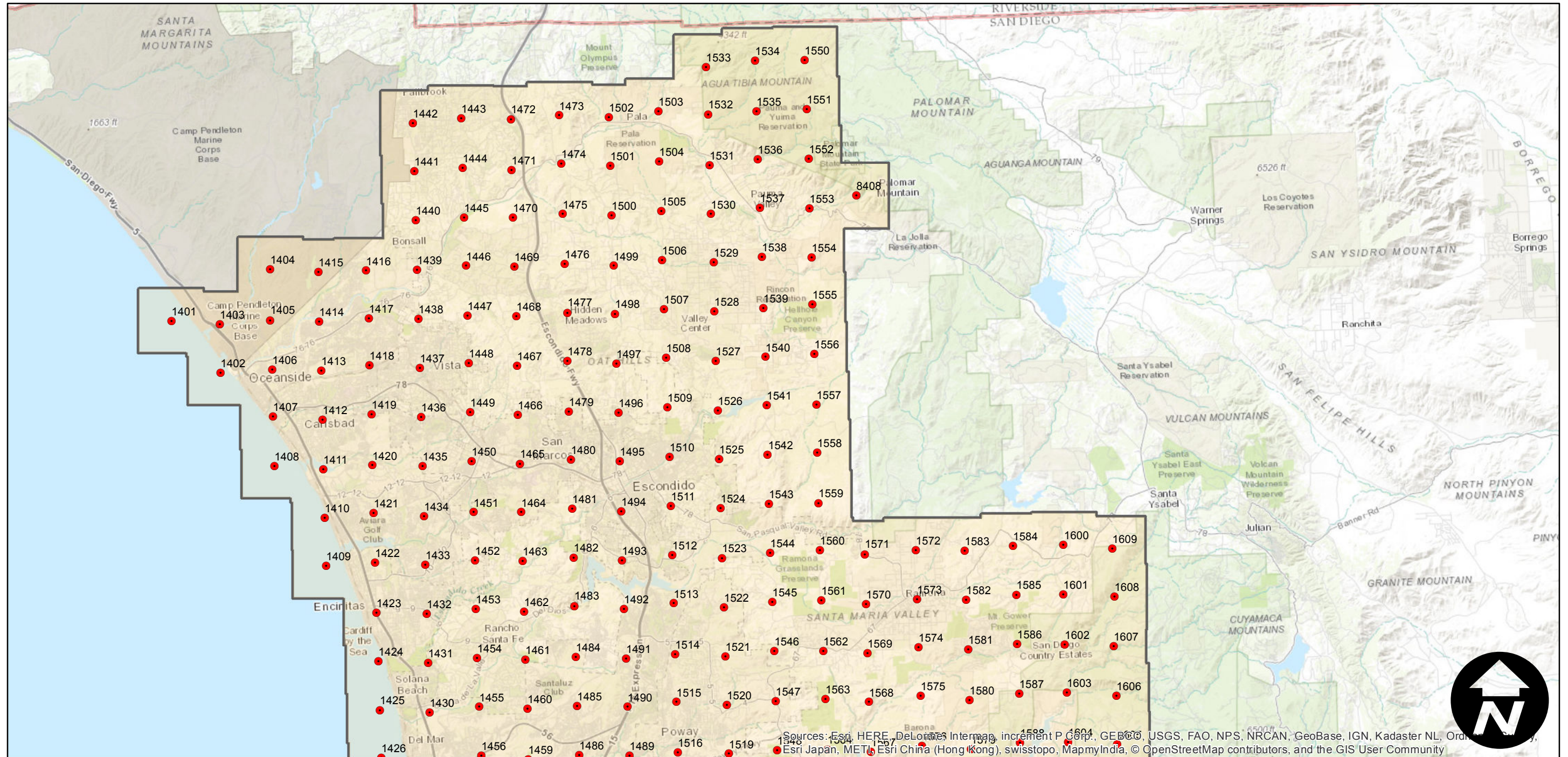
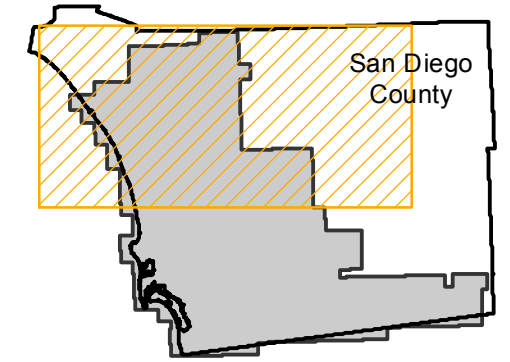
EAG-SD-04

Counties: San Diego
Flight date(s): 11-01-2004 to 12-17-2004
Scale: 1:21,000
Overlap: 20%

Complete Metadata:
<http://www.library.ucsb.edu/mil/aerial-photography-tools>

Note: Pala to San Ysidro. Imperial Beach to Jacumba.
Imagery acquired December 2013.

FLIGHT LOCATION



0 5 10 20 Miles

Scale of this index: 1:300,000

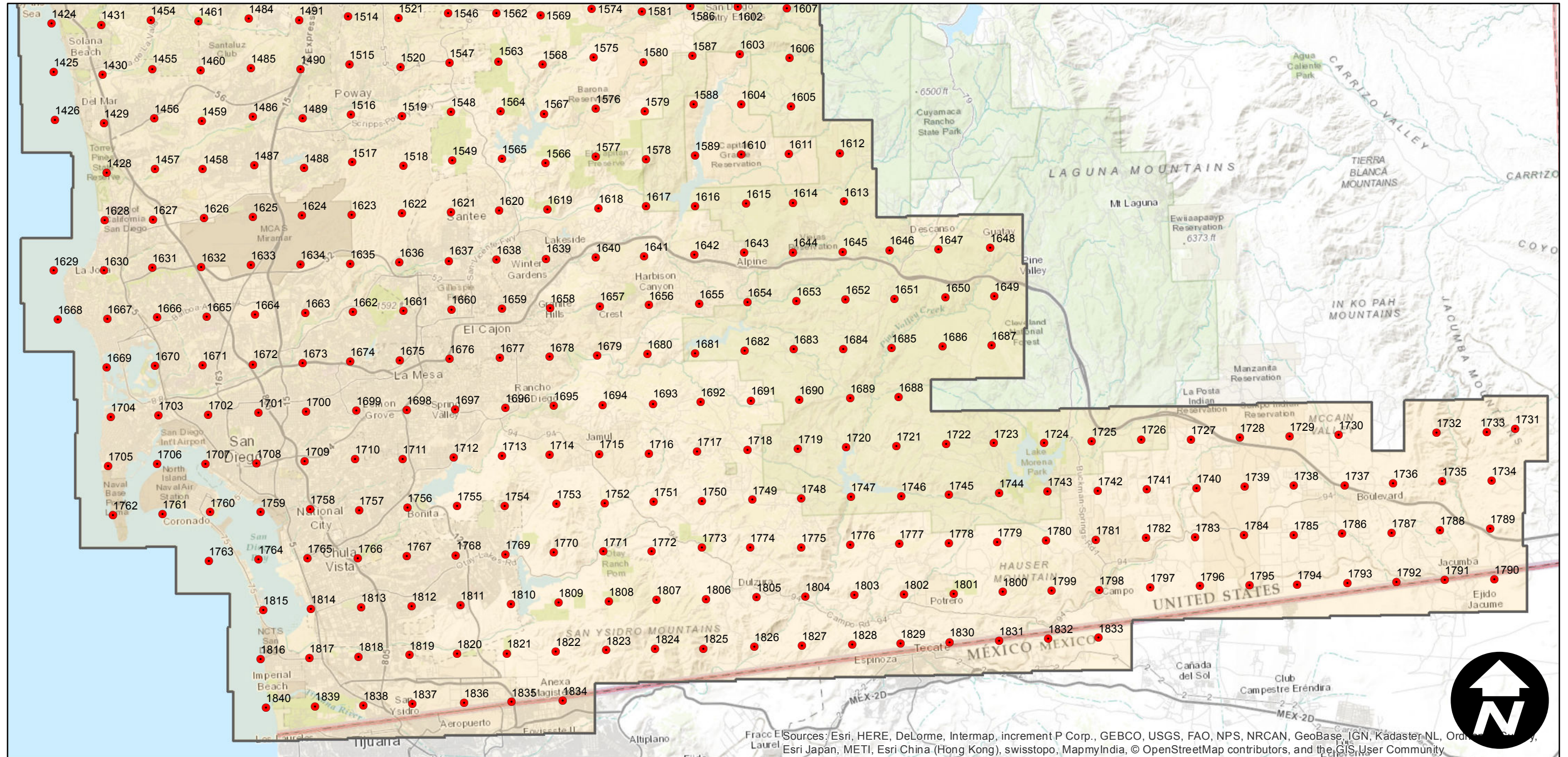
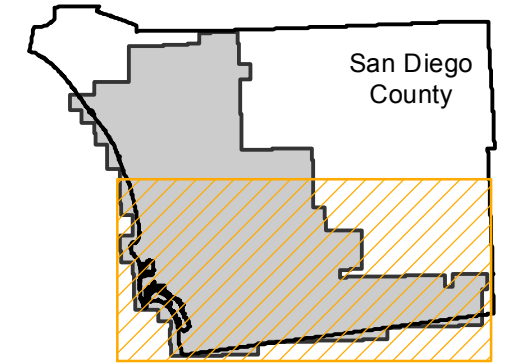
EAG-SD-04

Counties: San Diego
Flight date(s): 11-01-2004 to 12-17-2004
Scale: 1:21,000
Overlap: 20%

Complete Metadata:
<http://www.library.ucsb.edu/mil/aerial-photography-tools>

Note: Pala to San Ysidro. Imperial Beach to Jacumba.
Imagery acquired December 2013.

FLIGHT LOCATION



Sources: Esri, HERE, DeLorme, Intermap, increment P Corp., GEBCO, USGS, FAO, NPS, NRCAN, GeoBase, IGN, Kadaster, NL, Ordnance Survey, Esri Japan, METI, Esri China (Hong Kong), swisstopo, MapmyIndia, © OpenStreetMap contributors, and the GIS User Community



0 5 10 20 Miles

Scale of this index: 1:300,000