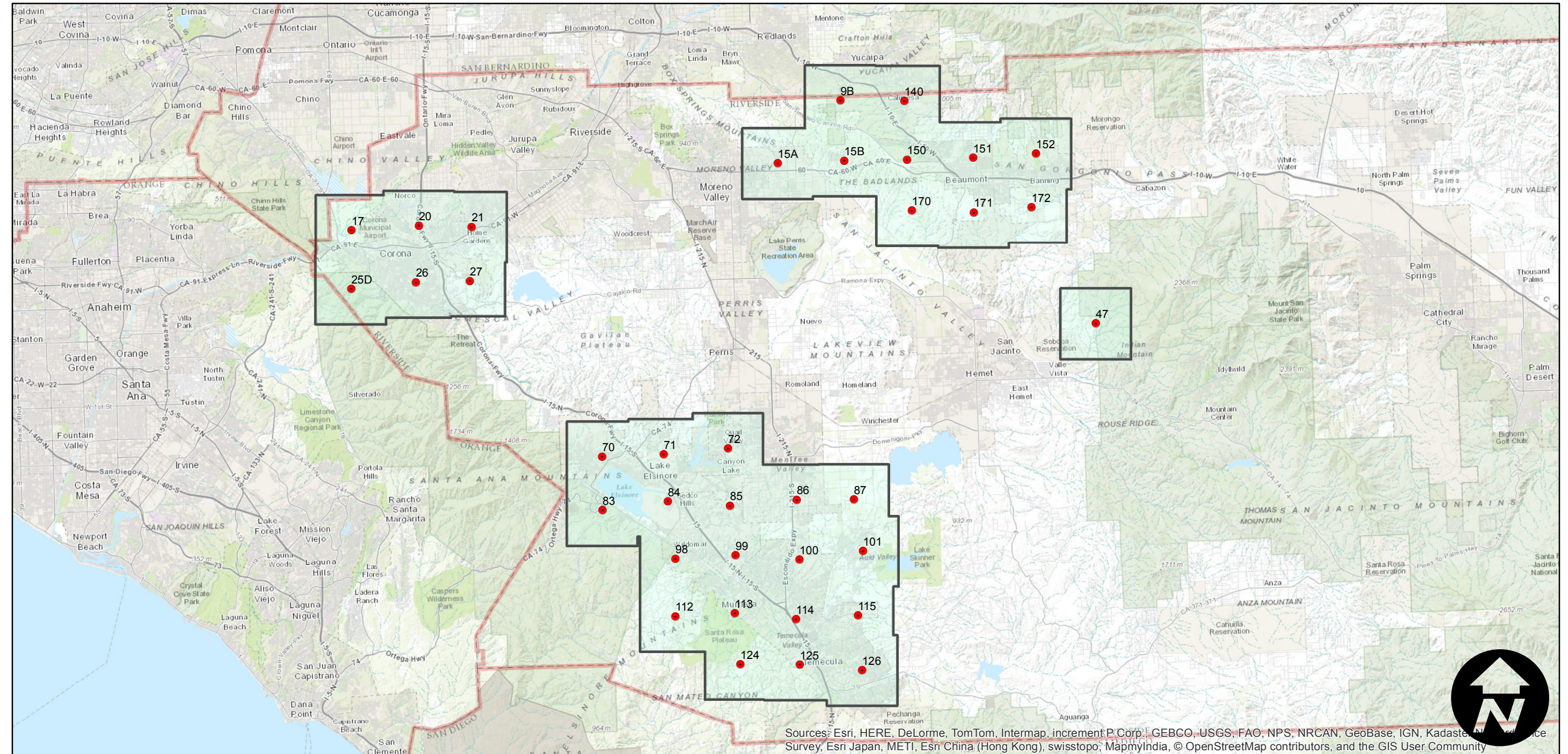


EAG-RV-94

Counties: Riverside
Flight date(s): 01-06-1994
Scale: 1:35,000
Overlap: 20%

Note: Sections of western Riverside County. Frames 9B and 140 photographed on 1994-01-11. Imagery acquired December 2013.

FLIGHT LOCATION



Sources: Esri, HERE, DeLorme, TomTom, Intermap, increment P Corp., GEBCO, USGS, FAO, NPS, NRCAN, GeoBase, IGN, Kadaster, NLD, NPS, Esri Japan, METI, Esri China (Hong Kong), swisstopo, MapmyIndia, © OpenStreetMap contributors, and the GIS User Community

