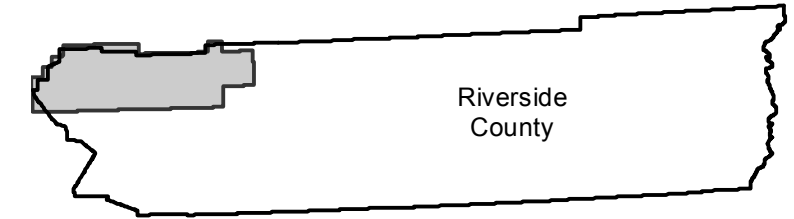


EAG-RV-06

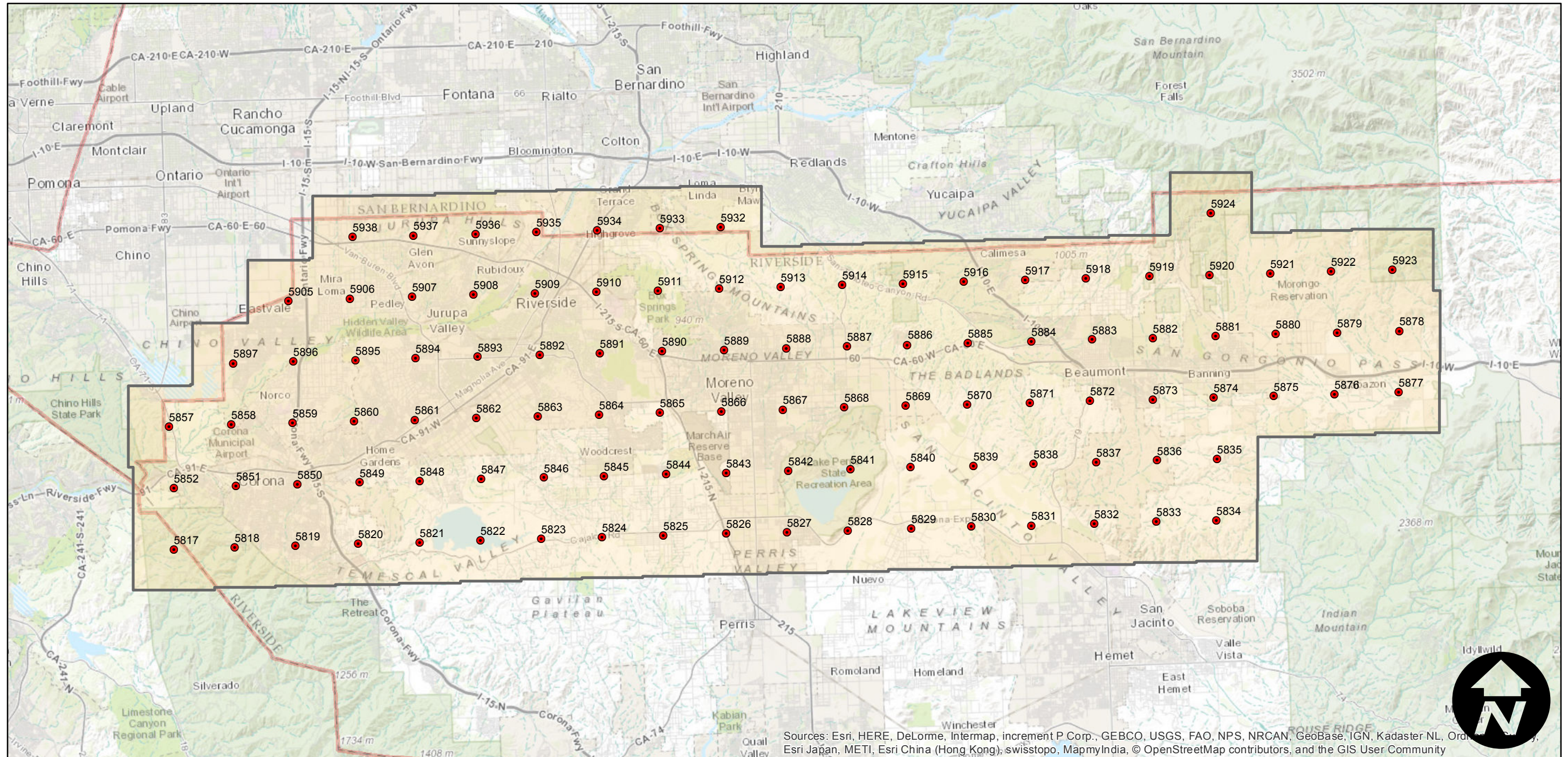
Counties: Riverside
Flight date(s): 05-24-2006
Scale: 1:24,000
Overlap: 10%

Note: Northwest section of Riverside County from Corona to Cabazon. Coverage extends as far south as Lake Perris. Imagery acquired December 2013.

FLIGHT LOCATION



Complete Metadata:
<http://www.library.ucsb.edu/mil/aerial-photography-tools>



Sources: Esri, HERE, DeLorme, Intermap, increment P Corp., GEBCO, USGS, FAO, NPS, NRCAN, GeoBase, IGN, Kadaster NL, Ordnance Survey, Esri Japan, METI, Esri China (Hong Kong), swisstopo, MapmyIndia, © OpenStreetMap contributors, and the GIS User Community

