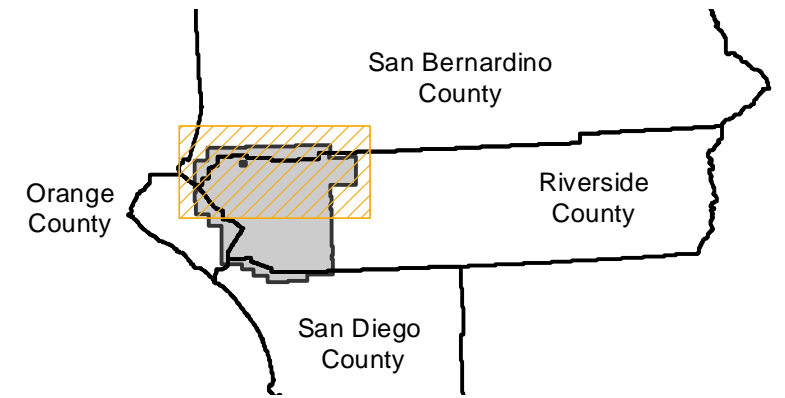


# EAG-RV-04 (1:21K)

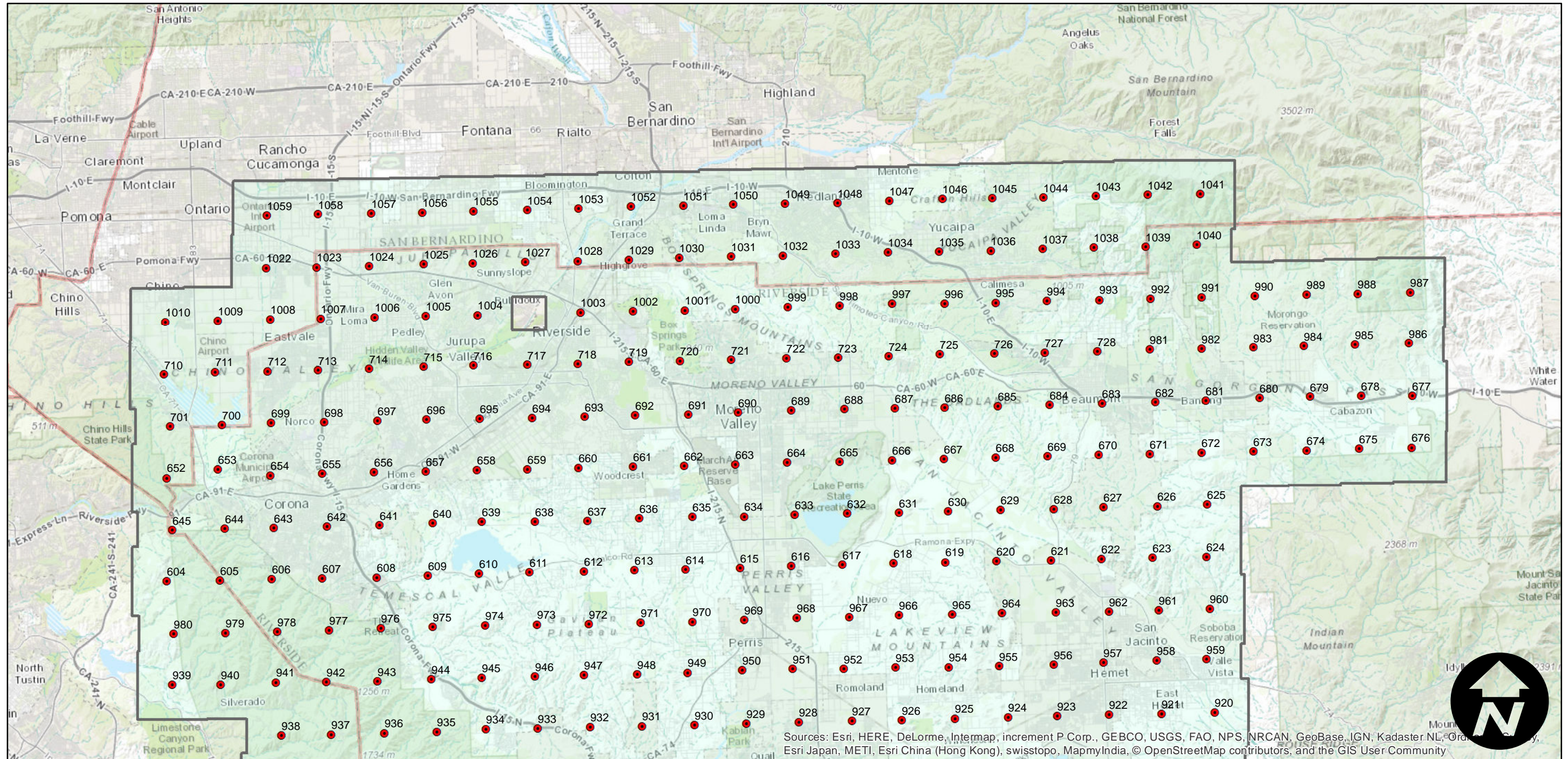
Counties: Riverside, San Bernardino, Orange, San Diego  
Flight date(s): 02-06-2004 to 07-21-2004  
Scale: 1:21,000  
Overlap: 30%

Note: West Riverside County and Coachella Valley. Imagery acquired December 2013.

## FLIGHT LOCATION



Complete Metadata:  
<http://www.library.ucsb.edu/mil/aerial-photography-tools>



Sources: Esri, HERE, DeLorme, Intermap, increment P Corp., GEBCO, USGS, FAO, NPS, NRCAN, GeoBase, IGN, Kadaster NL, Ordnance Survey, Esri Japan, METI, Esri China (Hong Kong), swisstopo, MapmyIndia, © OpenStreetMap contributors, and the GIS User Community

0 4 8 16 Miles

Index to Aerial Photography  
Page 1 of 2

Scale of this index: 1:285,000

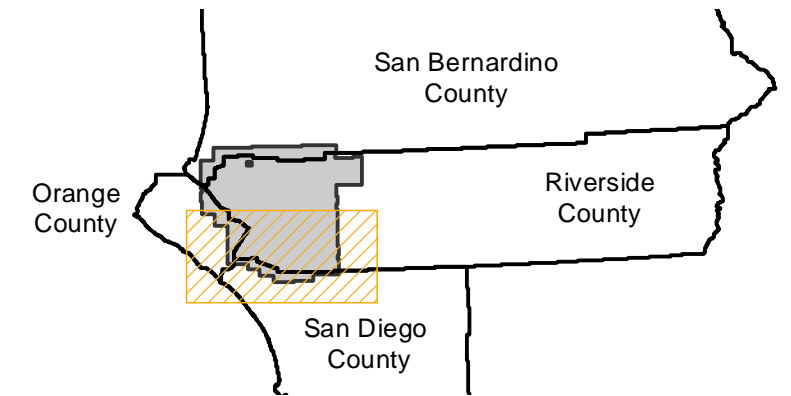


# EAG-RV-04 (1:21K)

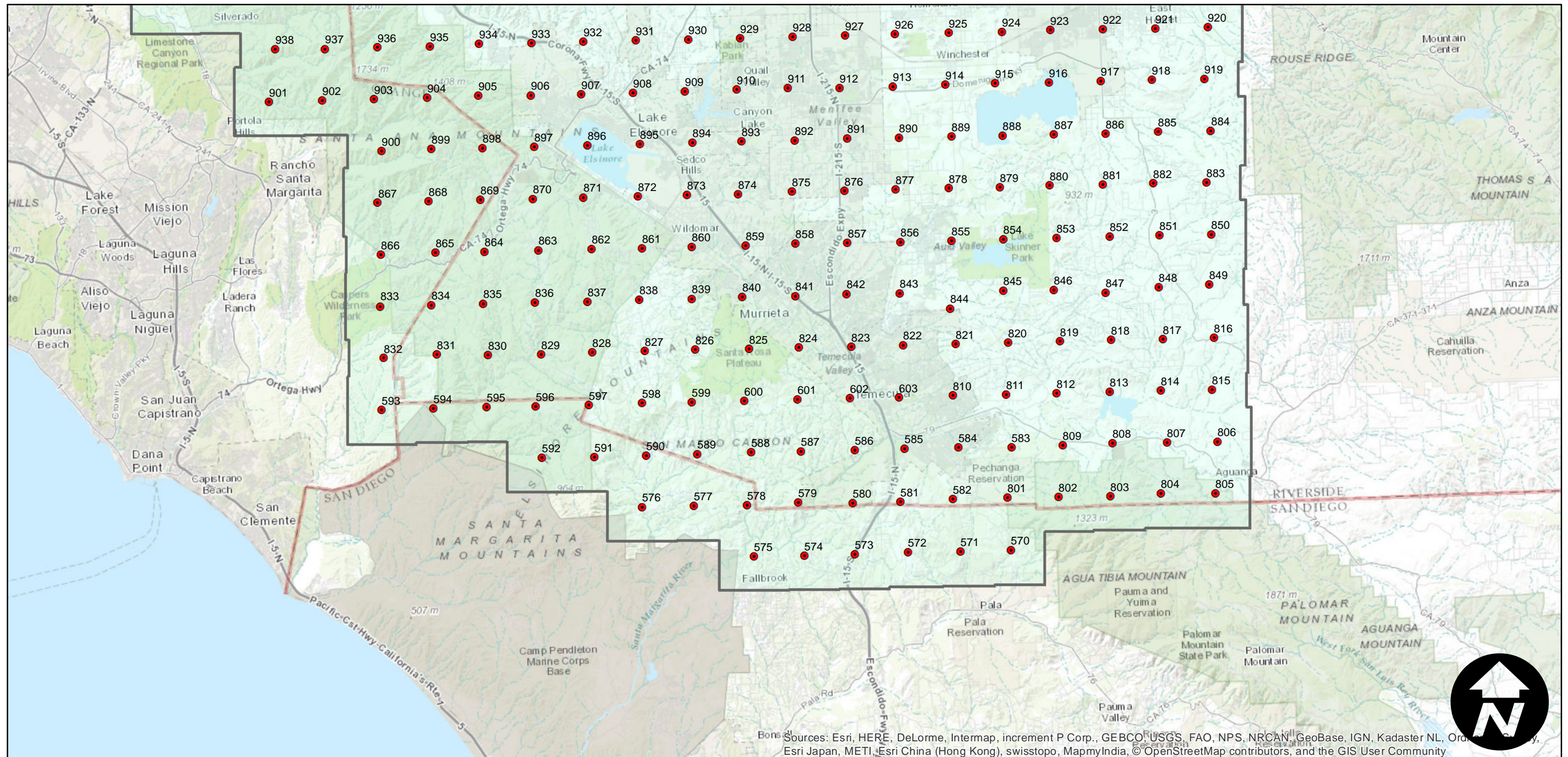
Counties: Riverside, San Bernardino, Orange, San Diego  
Flight date(s): 02-06-2004 to 07-21-2004  
Scale: 1:21,000  
Overlap: 30%

Note: West Riverside County and Coachella Valley. Imagery acquired December 2013.

## FLIGHT LOCATION



Complete Metadata:  
<http://www.library.ucsb.edu/mil/aerial-photography-tools>



0 4 8 16 Miles

Index to Aerial Photography  
Page 2 of 2

Scale of this index: 1:285,000

Sources: Esri, HERE, DeLorme, Intermap, increment P Corp., GEBCO, USGS, FAO, NPS, NRCAN, GeoBase, IGN, Kadaster NL, Ordnance Survey, Esri Japan, METI, Esri China (Hong Kong), swisstopo, MapmyIndia, © OpenStreetMap contributors, and the GIS User Community