

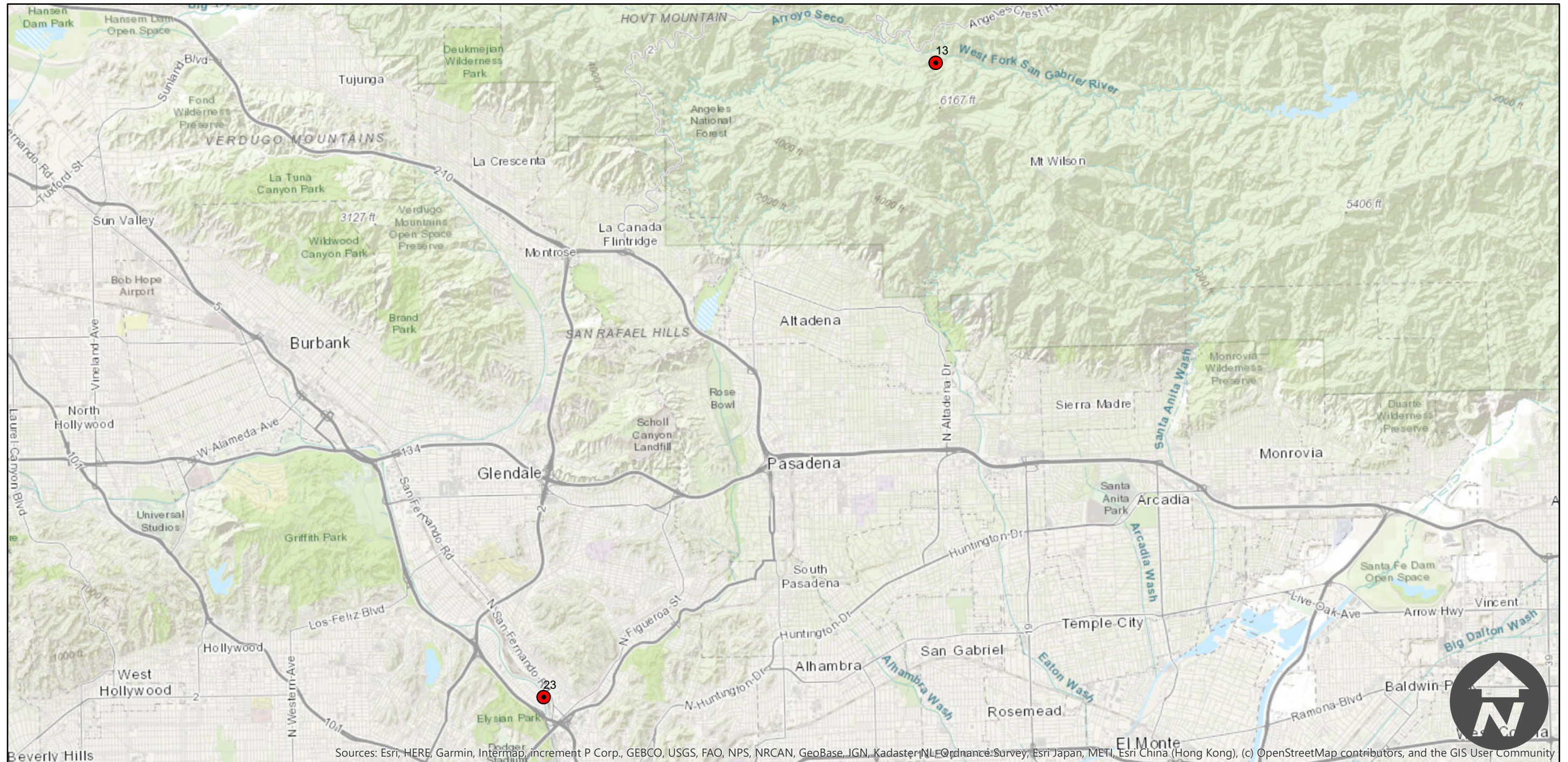
EAG-CV-12

Counties: Los Angeles, Orange, and San Diego
Flight date(s): 03-20-2012 to 09-12-2012
Scale: Varies
Overlap: 60%

Complete Metadata:
<https://www.library.ucsb.edu/src/airphotos/aerial-photography-information>

Note: Twenty four frames of varying scales from three counties across Southern California. Imagery consist of one frame over Dodger Stadium, one frame over Highway 2 in the San Gabriel Mountains, one frame over the border town of Otay Mesa, and four frames over Santa Catalina Island. The remaining sixteen frames are in clusters around the area of East Irvine.

FLIGHT LOCATION



0 1.75 3.5 7 Miles

Index to Aerial Photography
Page 1 of 4

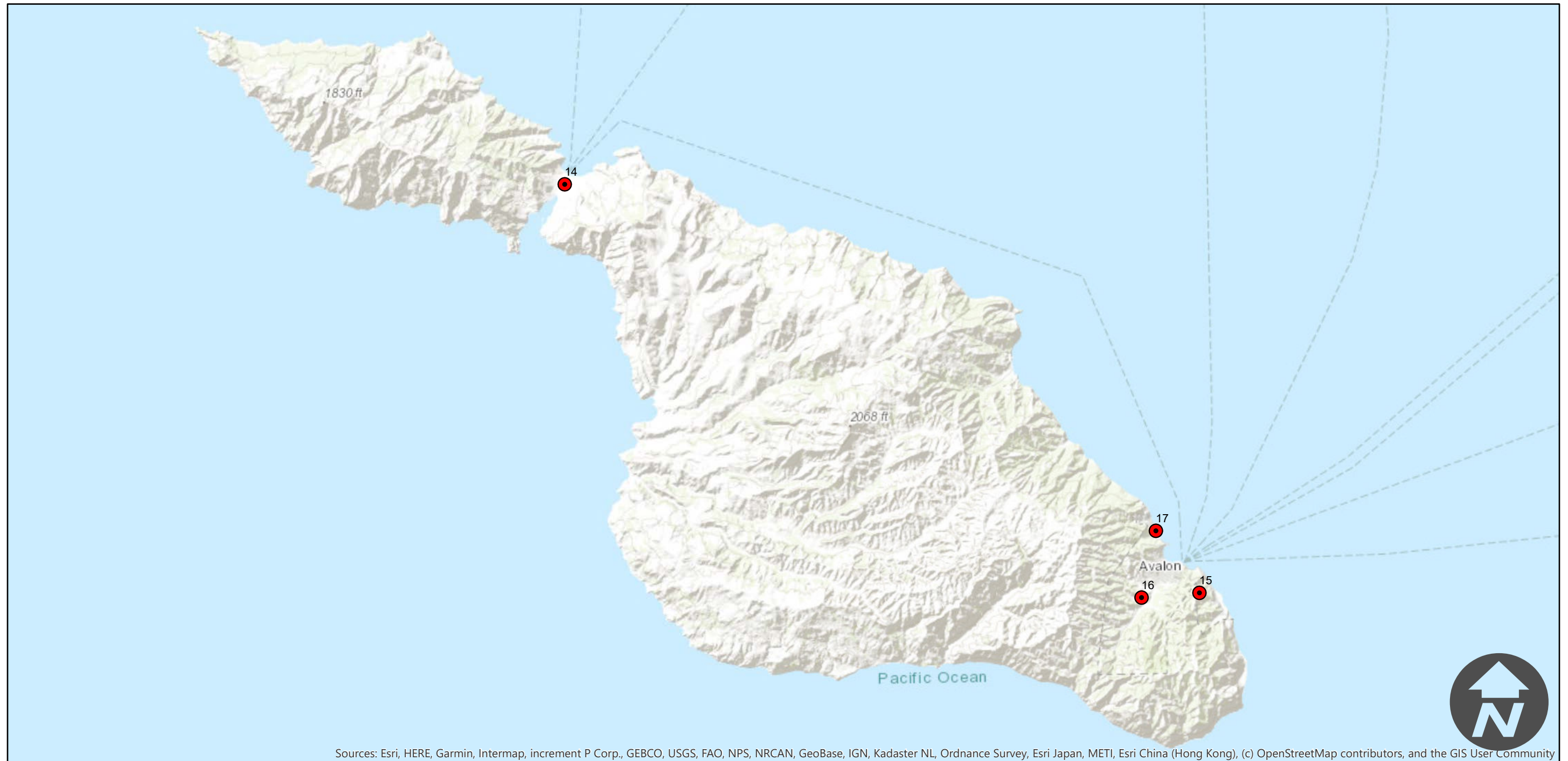
Scale of this index: 1:120,000

EAG-CV-12

Counties: Los Angeles, Orange, and San Diego
Flight date(s): 03-20-2012 to 09-12-2012
Scale: Varies
Overlap: 60%

Complete Metadata:
<https://www.library.ucsb.edu/src/airphotos/aerial-photography-information>

Note: Twenty four frames of varying scales from three counties across Southern California. Imagery consist of one frame over Dodger Stadium, one frame over Highway 2 in the San Gabriel Mountains, one frame over the border town of Otay Mesa, and four frames over Santa Catalina Island. The remaining sixteen frames are in clusters around the area of East Irvine.



0 1.75 3.5 7 Miles

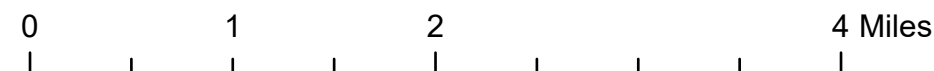
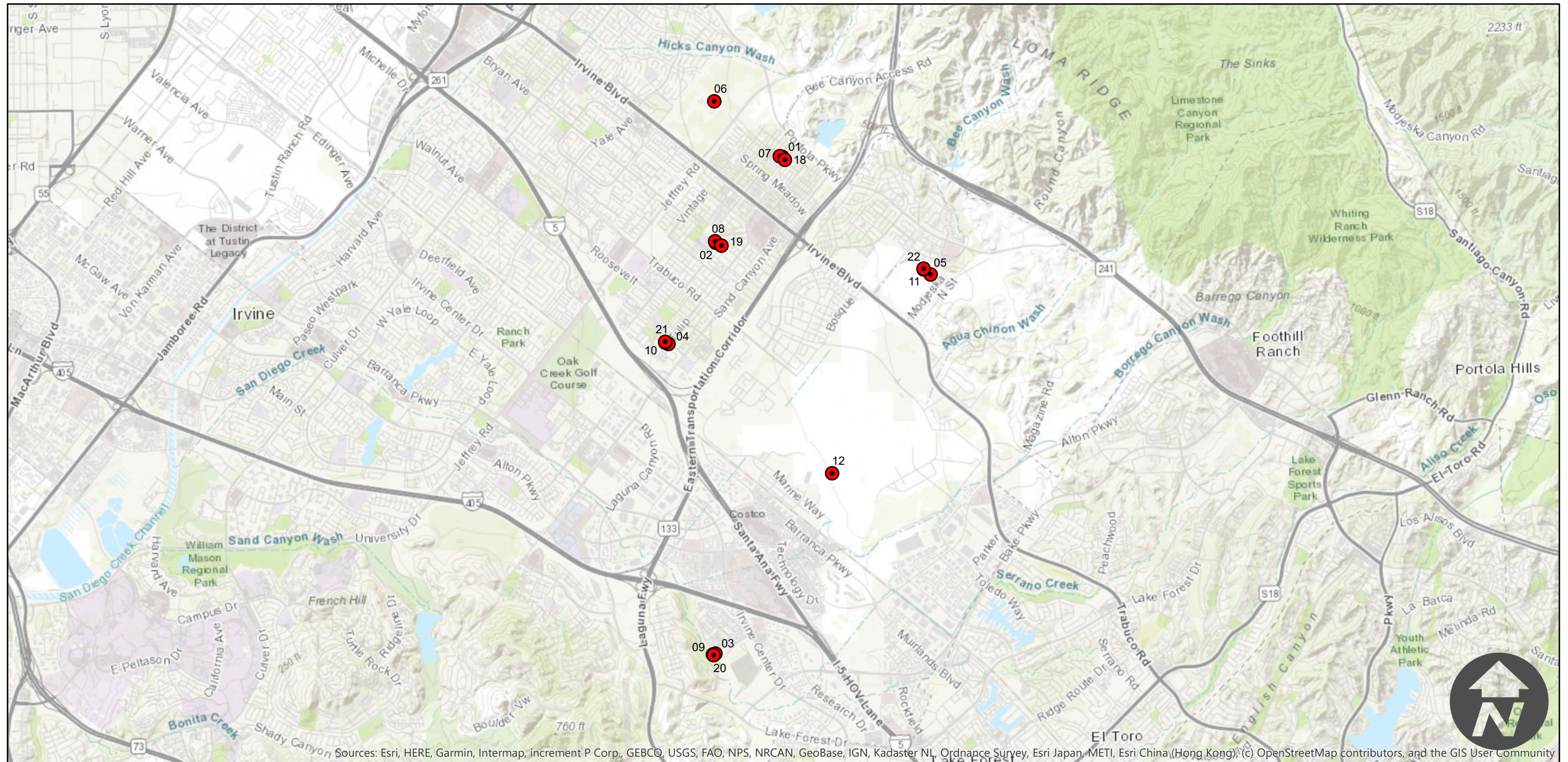
EAG-CV-12

Counties: Los Angeles, Orange, and San Diego
Flight date(s): 03-20-2012 to 09-12-2012
Scale: Varies
Overlap: 60%

Note: Twenty four frames of varying scales from three counties across Southern California. Imagery consist of one frame over Dodger Stadium, one frame over Highway 2 in the San Gabriel Mountains, one frame over the border town of Otay Mesa, and four frames over Santa Catalina Island. The remaining sixteen frames are in clusters around the area of East Irvine.



Complete Metadata:
<https://www.library.ucsb.edu/src/airphotos/aerial-photography-information>



EAG-CV-12

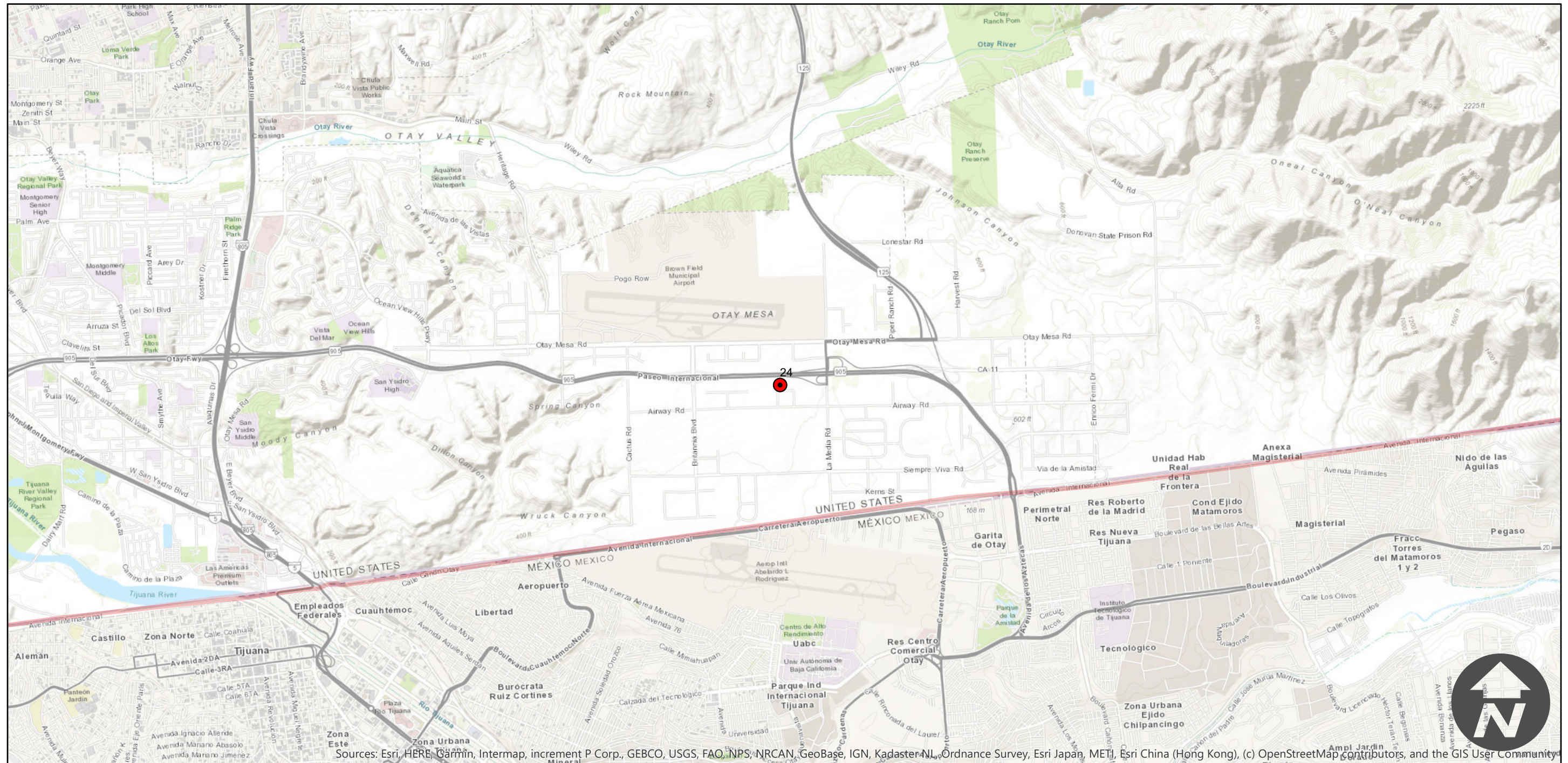
Counties: Los Angeles, Orange, and San Diego
 Flight date(s): 03-20-2012 to 09-12-2012
 Scale: Varies
 Overlap: 60%

Note: Twenty four frames of varying scales from three counties across Southern California. Imagery consist of one frame over Dodger Stadium, one frame over Highway 2 in the San Gabriel Mountains, one frame over the border town of Otay Mesa, and four frames over Santa Catalina Island. The remaining sixteen frames are in clusters around the area of East Irvine.

FLIGHT LOCATION



Complete Metadata:
<https://www.library.ucsb.edu/src/airphotos/aerial-photography-information>



Sources: Esri, HERE, Garmin, Intermap, increment P Corp., GEBCO, USGS, FAO, NPS, NRCAN, GeoBase, IGN, Kadaster NL, Ordnance Survey, Esri Japan, METI, Esri China (Hong Kong), (c) OpenStreetMap contributors, and the GIS User Community

