

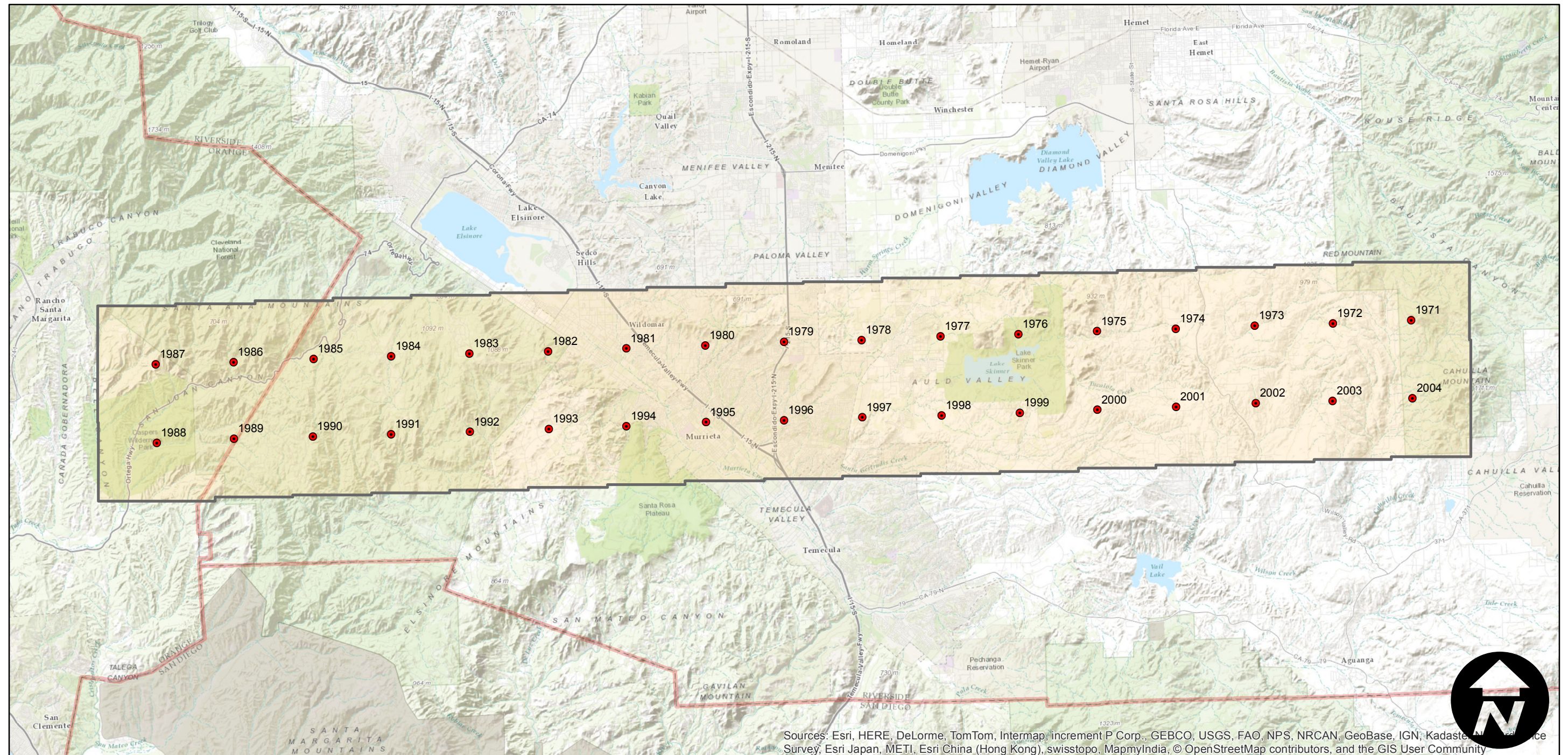
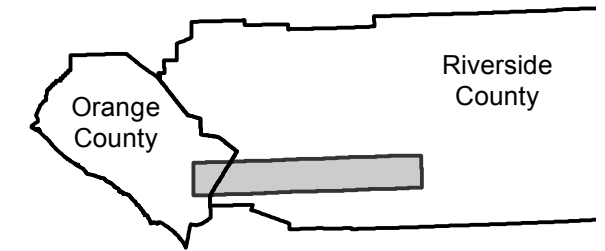
EAG-26

Counties: Riverside, Orange
Flight date(s): 03-19-2008
Scale: 1:27,000
Overlap: 30%

Complete Metadata:
<http://www.library.ucsb.edu/mil/aerial-photography-tools>

Note: Vicinity of Skinner Reservoir: Cahuilla Mountain to SR 74 (Ortega Highway). Imagery acquired December 2013.

FLIGHT LOCATION



Sources: Esri, HERE, DeLorme, TomTom, Intermap, increment P Corp., GEBCO, USGS, FAO, NPS, NRCAN, GeoBase, IGN, Kadaster, N, and the GIS User Community

0 3 6 12 Miles

Index to Aerial Photography
Page 1 of 1

Scale of this index: 1:215,000