

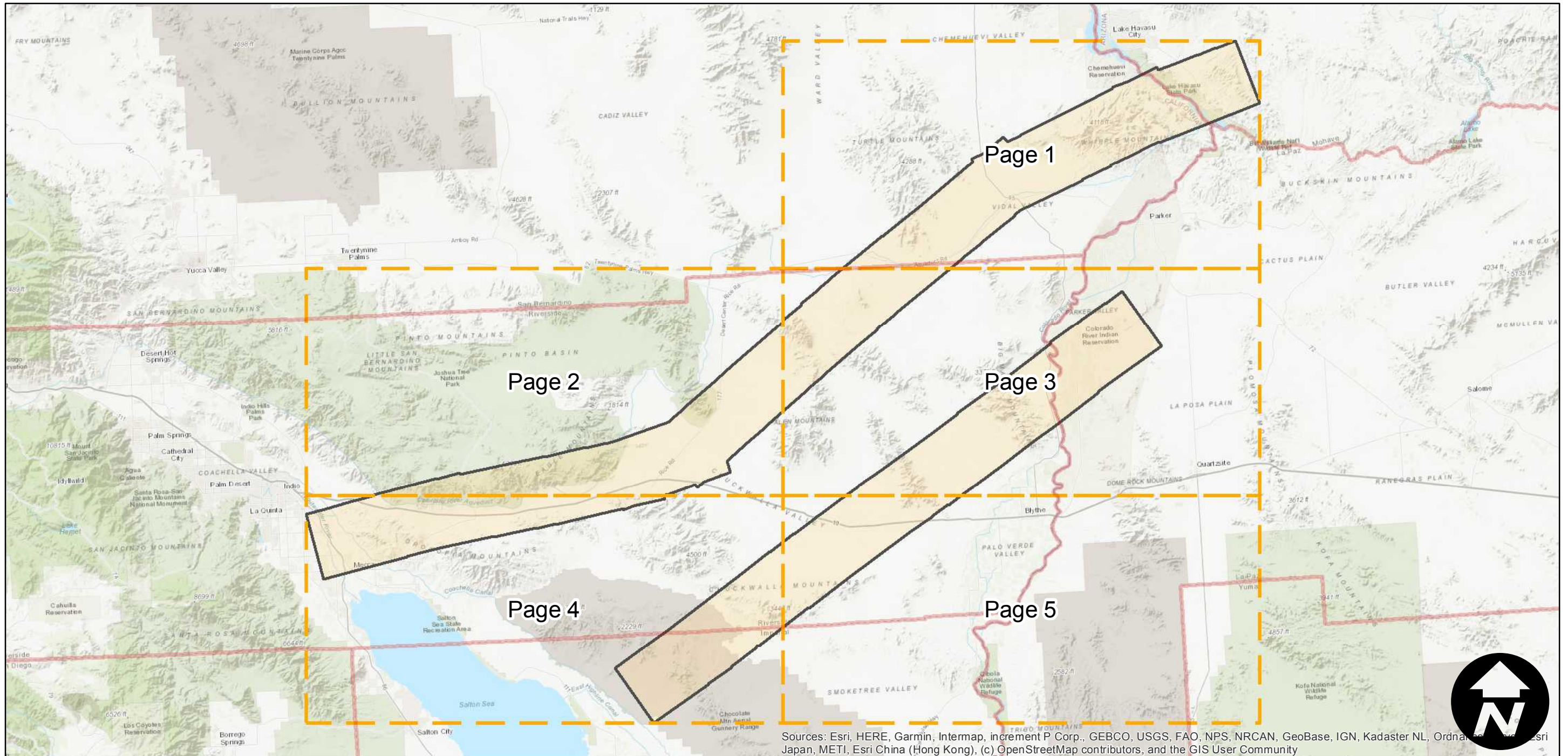
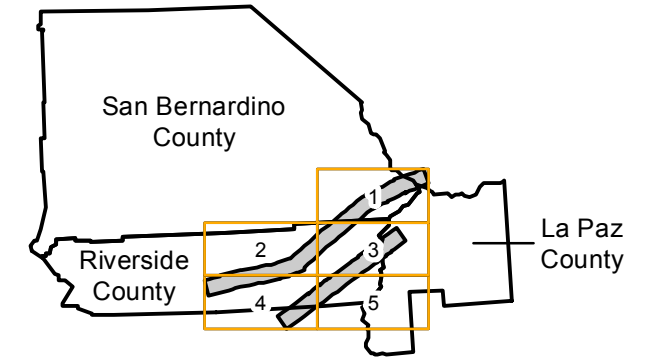
# DTM

Counties: Riverside, San Bernardino (California); La Paz (Arizona)  
Flight date(s): 04-13-1943  
Scale: 1:60,000  
Overlap: 60%

Note: Flight includes vertical coverage as well as left and right obliques along flight lines.

Complete Metadata:  
<https://www.library.ucsb.edu/src/airphotos/aerial-photography-information>

## FLIGHT LOCATION



0 10 20 40 Miles

Index to Aerial Photography  
Page Key

Scale of this index: 1:830,000

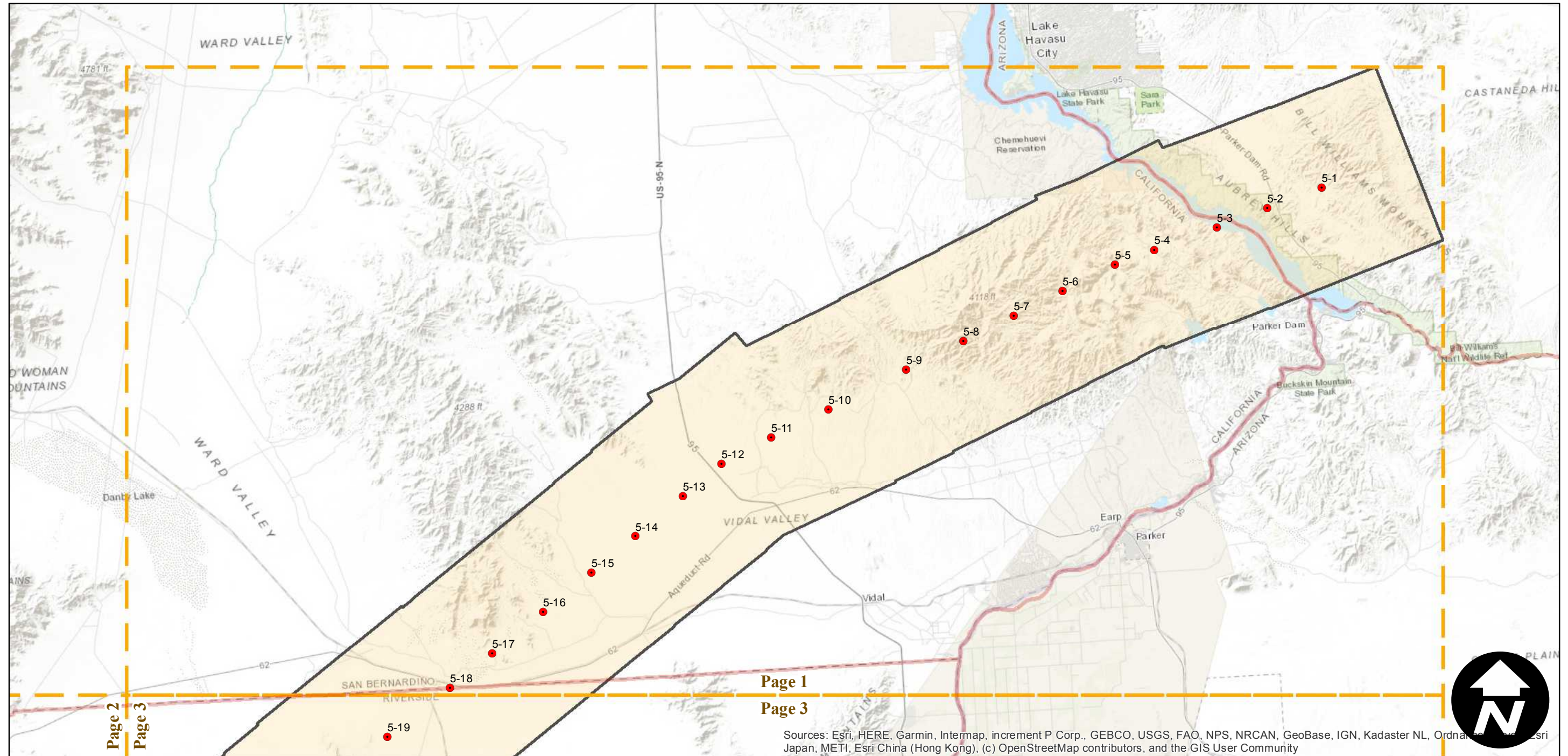
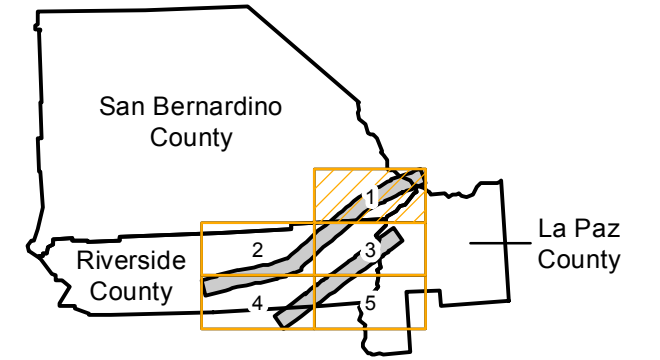
# DTM

Counties: Riverside, San Bernardino (California); La Paz (Arizona)  
Flight date(s): 04-13-1943  
Scale: 1:60,000  
Overlap: 60%

Complete Metadata:  
<https://www.library.ucsb.edu/src/airphotos/aerial-photography-information>

Note: Flight includes vertical coverage as well as left and right obliques along flight lines.

## FLIGHT LOCATION



0 4 8 16 Miles

Index to Aerial Photography  
Page 1 of 5

Scale of this index: 1:300,000

Sources: Esri, HERE, Garmin, Intermap, increment P Corp., GEBCO, USGS, FAO, NPS, NRCAN, GeoBase, IGN, Kadaster NL, Ordnance Survey, Esri Japan, METI, Esri China (Hong Kong), (c) OpenStreetMap contributors, and the GIS User Community

# DTM

Counties: Riverside, San Bernardino (California); La Paz (Arizona)

Flight date(s): 04-13-1943

Scale: 1:60,000

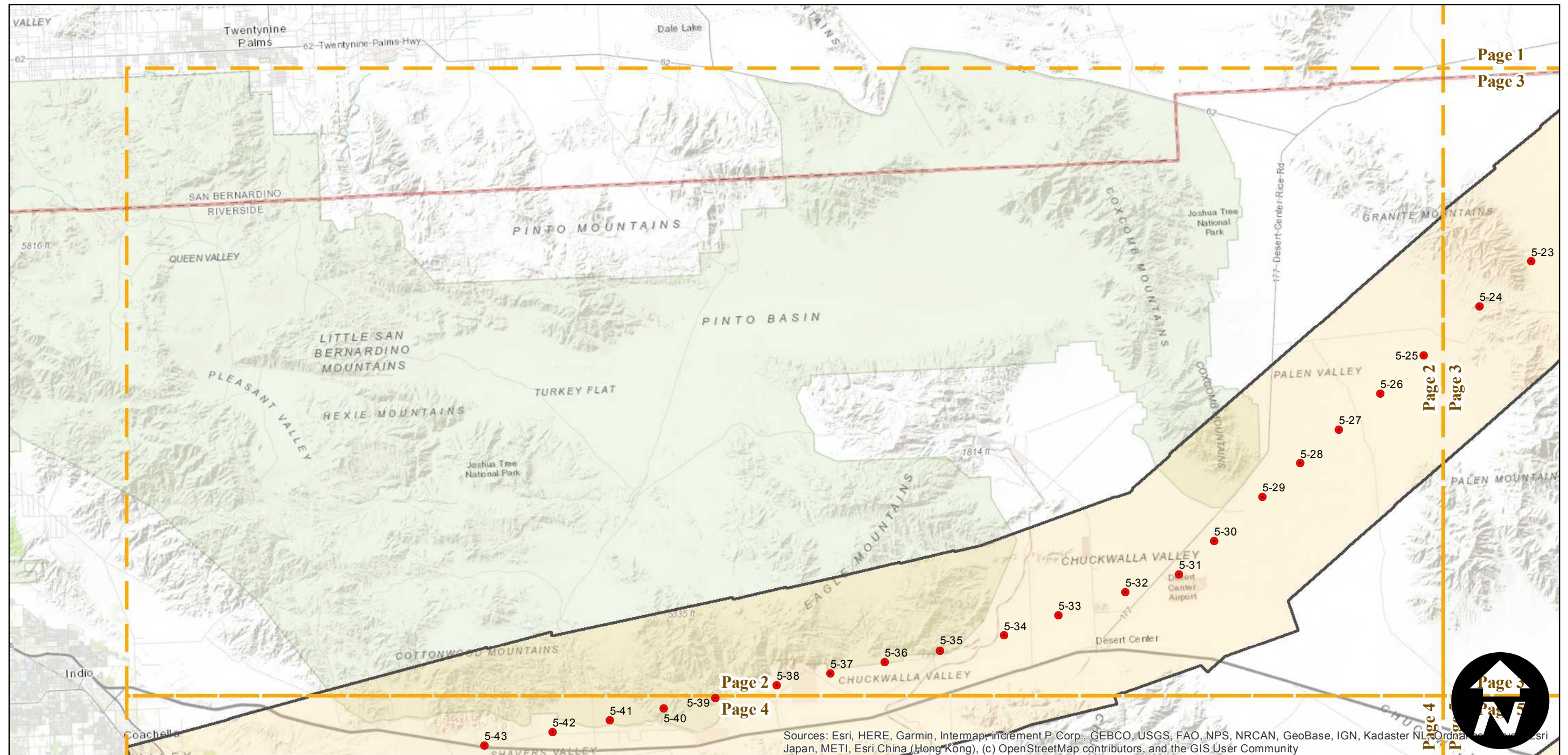
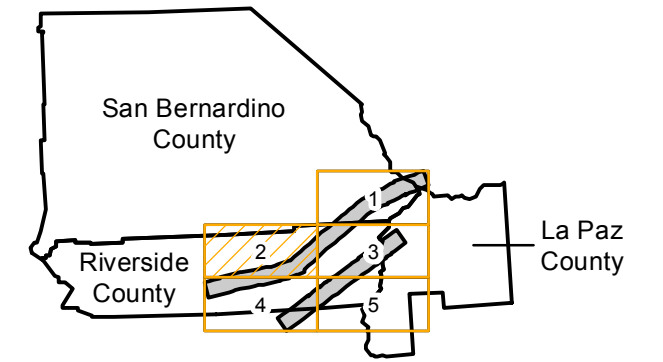
Overlap: 60%

Complete Metadata:

<https://www.library.ucsb.edu/src/airphotos/aerial-photography-information>

Note: Flight includes vertical coverage as well as left and right obliques along flight lines.

## FLIGHT LOCATION



Sources: Esri, HERE, Garmin, Intermap, increment P Corp., GEBCO, USGS, FAO, NPS, NRCAN, GeoBase, IGN, Kadaster NL, Ordnance Survey, Esri Japan, METI, Esri China (Hong Kong), (c) OpenStreetMap contributors, and the GIS User Community

0 4 8 16 Miles

Index to Aerial Photography  
Page 2 of 5

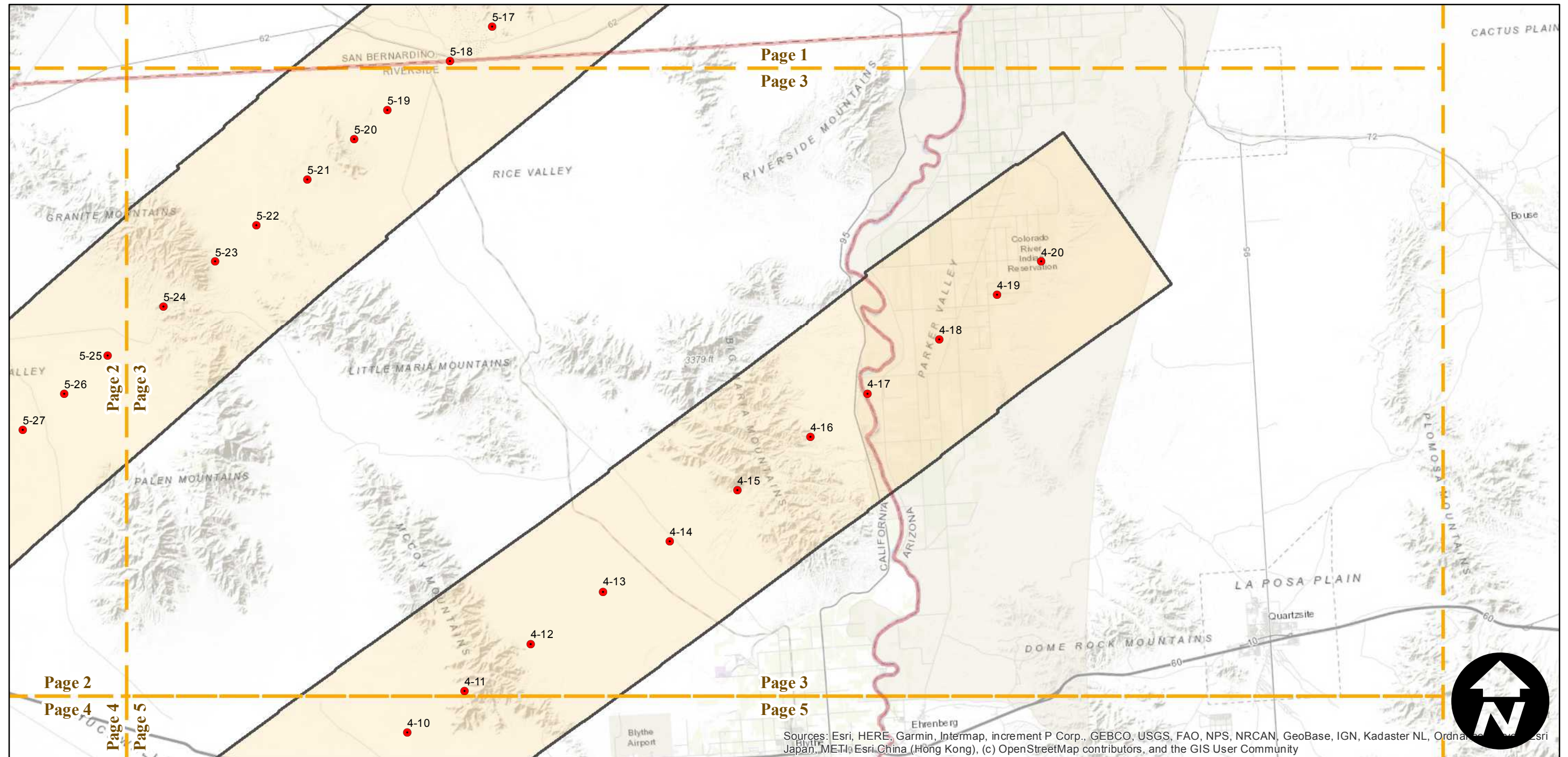
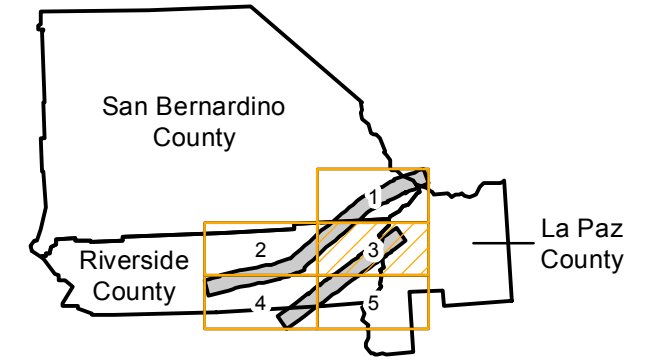
Scale of this index: 1:300,000

# DTM

Counties: Riverside, San Bernardino (California); La Paz (Arizona)  
Flight date(s): 04-13-1943  
Scale: 1:60,000  
Overlap: 60%

Note: Flight includes vertical coverage as well as left and right obliques along flight lines.

## FLIGHT LOCATION



0 4 8 16 Miles

Index to Aerial Photography  
Page 3 of 5

Scale of this index: 1:300,000

Sources: Esri, HERE, Garmin, Intermap, increment P Corp., GEBCO, USGS, FAO, NPS, NRCAN, GeoBase, IGN, Kadaster NL, Ordnance Survey, Esri Japan, METI, Esri China (Hong Kong), (c) OpenStreetMap contributors, and the GIS User Community

# DTM

Counties: Riverside, San Bernardino (California); La Paz (Arizona)

Flight date(s): 04-13-1943

Scale: 1:60,000

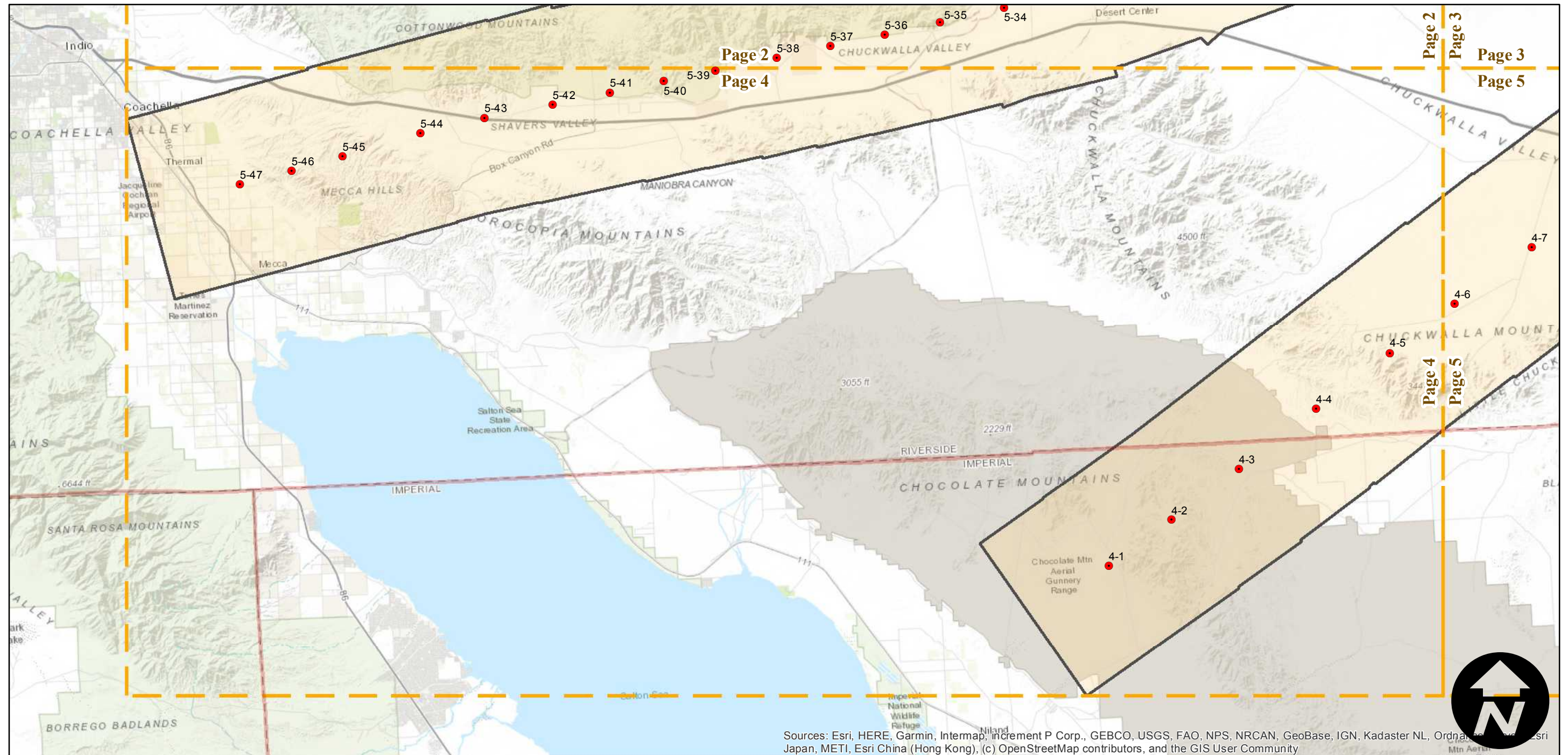
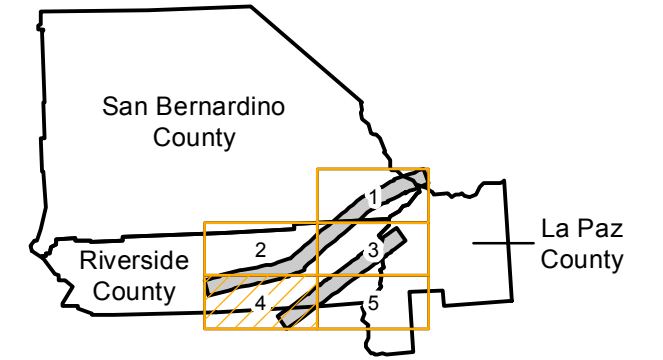
Overlap: 60%

Complete Metadata:

<https://www.library.ucsb.edu/src/airphotos/aerial-photography-information>

Note: Flight includes vertical coverage as well as left and right obliques along flight lines.

## FLIGHT LOCATION



Sources: Esri, HERE, Garmin, Intermap, increment P Corp., GEBCO, USGS, FAO, NPS, NRCAN, GeoBase, IGN, Kadaster NL, Ordnance Survey, Esri Japan, METI, Esri China (Hong Kong), (c) OpenStreetMap contributors, and the GIS User Community

0 4 8 16 Miles

Index to Aerial Photography  
Page 4 of 5

Scale of this index: 1:300,000

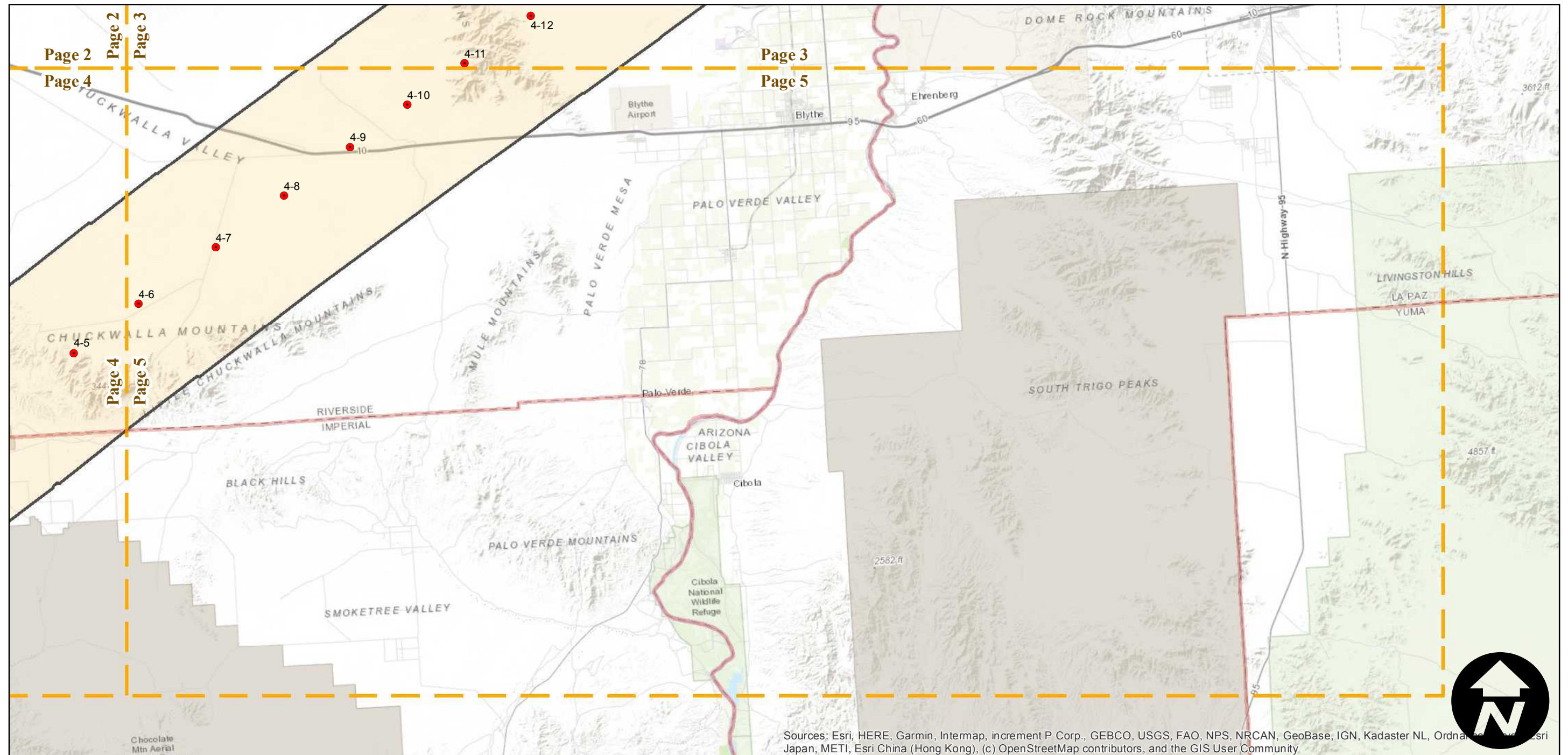
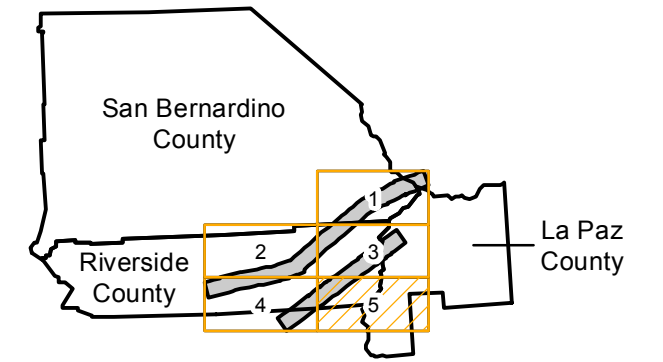
# DTM

Counties: Riverside, San Bernardino (California); La Paz (Arizona)  
Flight date(s): 04-13-1943  
Scale: 1:60,000  
Overlap: 60%

Note: Flight includes vertical coverage as well as left and right obliques along flight lines.

Complete Metadata:  
<https://www.library.ucsb.edu/src/airphotos/aerial-photography-information>

## FLIGHT LOCATION



Sources: Esri, HERE, Garmin, Intermap, increment P Corp., GEBCO, USGS, FAO, NPS, NRCAN, GeoBase, IGN, Kadaster NL, Ordnance Survey, Esri Japan, METI, Esri China (Hong Kong), (c) OpenStreetMap contributors, and the GIS User Community

